

R E V E N G E™  
*of the*  
**BEEFSTEAK**  
TOMATOES



Games of the Century™

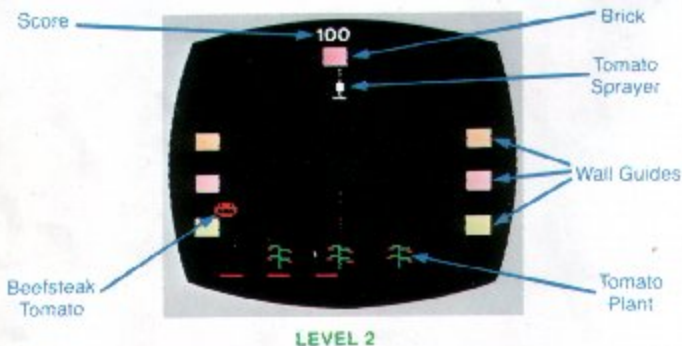


Game Instructions  
Games of the Century™

# REVENGE OF THE BEEFSTEAK TOMATOES™

## TO SET UP:

Set up your video computer system and left joystick controller as instructed in your game system owner's manual. Move the Color/B-W Lever to the correct setting. Turn the power OFF. Insert the Revenge of the Beefsteak Tomatoes game cartridge and then turn the power ON. Use the Game Select Lever and Difficulty Switches to choose a play level. Press the Game Reset Lever and prepare for Tomato warfare!



## THE CONTROLS:

Tilt the joystick in any direction to maneuver your all-purpose Tomato Sprayer around the screen. The joystick button is used to capture and release Bricks, and also to destroy Tomatoes and Tomato Plants.

## THE OBJECTIVE:

Your objective is to trap the Tomato Plants at the bottom of the screen by building three walls above them. At the same time you must avoid or shoot down all flying Tomatoes, dodge Tomato Bombs and stop the Brick-Eaters.

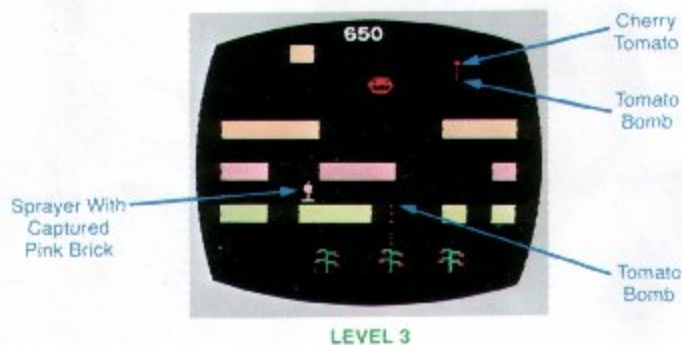
## SCREEN DISPLAY:

Your score is displayed at the top of the screen. In the bottom left-hand corner, red bars show the number of Tomato Sprayers remaining. (NOTE: If the left Difficulty Switch is in the B position, there will always be three bars remaining.)

## BUILDING WALLS:

Your job is to build three walls above the Tomato Plants. The walls are built by capturing colored Bricks and then dropping them into place across the lower half of the screen. To capture a Brick, you must shoot it ONCE with your all-purpose Tomato Sprayer as the Brick moves across the top of the screen. A "beep" will sound when you hit a Brick. If you succeed in capturing it, your Sprayer will turn the color of that Brick. The Brick may now be placed in a wall by aiming the Tomato Sprayer toward the desired position in the wall and then pressing the joystick fire button ONCE. Only green Bricks may be placed in the bottom wall, only pink Bricks in the middle wall and only gold Bricks in the top wall. The permanent Bricks on either side of the screen are guides to show you where to line up your colored Bricks. You can aim from underneath or from on top of the wall, but you cannot place a Brick by firing horizontally. Also, you cannot drop a Brick through an existing wall. You must guide the Tomato Sprayer through openings in the upper walls to reach the empty spots below.

Careful now, you only have one chance to place a captured Brick. If you miss the wall, you lose the Brick. No wall can be completed if one of the walls beneath it is incomplete.



## TOMATOES:

You must avoid the bombs from the Tomato Plants at the bottom of the screen and from the flying Cherry Tomatoes at the top. Colliding with either a Beefsteak Tomato, a bomb from a Cherry Tomato or a Tomato Plant will result in the loss of one Tomato Sprayer.

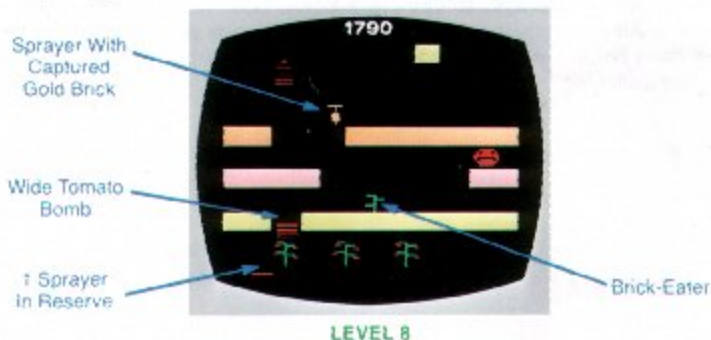
In play levels 4, 6 and 8, brick-eating Tomato Plants will occasionally grow on the walls. The Tomato Bombs will turn green if a "Brick-Eater" is growing somewhere. If allowed to reach its full height, both it and the Brick under it will disappear. Shooting a Brick-Eater or completing any wall will stop the Plant from eating the Brick. If you run into a Brick-Eater, you will lose one Sprayer.



## SCORING:

Points are awarded for hitting Tomatoes, Brick-Eaters and Tomato Plants, capturing and placing Bricks, and completing Walls.

Roving Beefsteak Tomato	= 5	Placing a Brick in Wall	= 20
Killer Cherry Tomato	= 50	Completing first Wall	= 1000
Brick-Eater	= 5	Completing second Wall	= 2000
Capturing a Brick	= 10	Completing third Wall	= 3000



## PLAY LEVELS/DIFFICULTY SWITCHES:

Revenge of the Beefsteak Tomatoes will automatically begin on level 6. You can choose a different play level by pressing the Game Select Lever before starting the game. The current level of play will be displayed at the top of the screen. After you complete a game by building all three walls, you will be challenged with another round of Tomato warfare in that same play level.

LEVEL 1 = Tomato Plants fire

LEVEL 2 = Tomato Plants fire and Beefsteak Tomatoes roam across the screen

LEVEL 3 = Same as Level 2, plus Cherry Tomatoes

LEVEL 4 = Same as Level 3, plus Brick-Eaters

LEVEL 5 = Same as Level 3, but increasingly difficult with each round

LEVEL 6 = Same as Level 4, but increasingly difficult with each round

LEVEL 7 = Same as Level 5, but Tomato Bombs are wider

LEVEL 8 = Same as Level 6, but Tomato Bombs are wider

LEFT DIFFICULTY SWITCH A = Four Sprayers per game

LEFT DIFFICULTY SWITCH B = Unlimited number of Sprayers per game

RIGHT DIFFICULTY SWITCH A = Speed of Tomatoes and Tomato Bombs is fast

RIGHT DIFFICULTY SWITCH B = Speed of Tomatoes and Tomato Bombs is slow

