

## *Contents*

# MONSTER TRUCKS



Introduction	2
Starting The Game	3
Default Controls	4
Games Screens	5
Menus	8
Drivers	12
Playing The Game	20
Credits	24



*English*

# MONSTER TRUCKS



ENGLISH	Page
	2



## *Introduction*

Ever tried driving a monster truck across landscapes that weren't built with the internal combustion engine in mind?

Ever tried powering your way through sand storms, blizzards and wide open deserts in a low-slung buggy with just a compass for company?

## Nope?

Thought not.

Well this is your chance to see what it's like. So put the pedal to the metal and hit the horizon hard.

Get ready to enter the world of truck versus nature. Get ready to drive yourself into the dirt!

## *Starting The Game*

### **INSTALLING THROUGH WINDOWS 95**

Insert the Monster Trucks CD-ROM into your CD drive. The game should then auto run. Follow the on-screen instructions for Install Shield.

If the game does not auto run, open the CD-ROM and double click 'INSTALL'. This will run Install Shield. You should then follow the on-screen instructions.

### **INSTALLING THROUGH MS DOS**

Change to your CD ROM by typing D: <enter> (where D: refers to your CD ROM drive letter).

Change to the DOS directory on the Monster Trucks CD by typing CD DOS <enter>

Type INSTALL <enter>

Press 1 - 5 for language selection.

Enter the path for installation (the default is C:\Games\MT).

Change to the installed directory by typing CD C:\Games\MT <enter> (If the game has been installed elsewhere please change accordingly.)

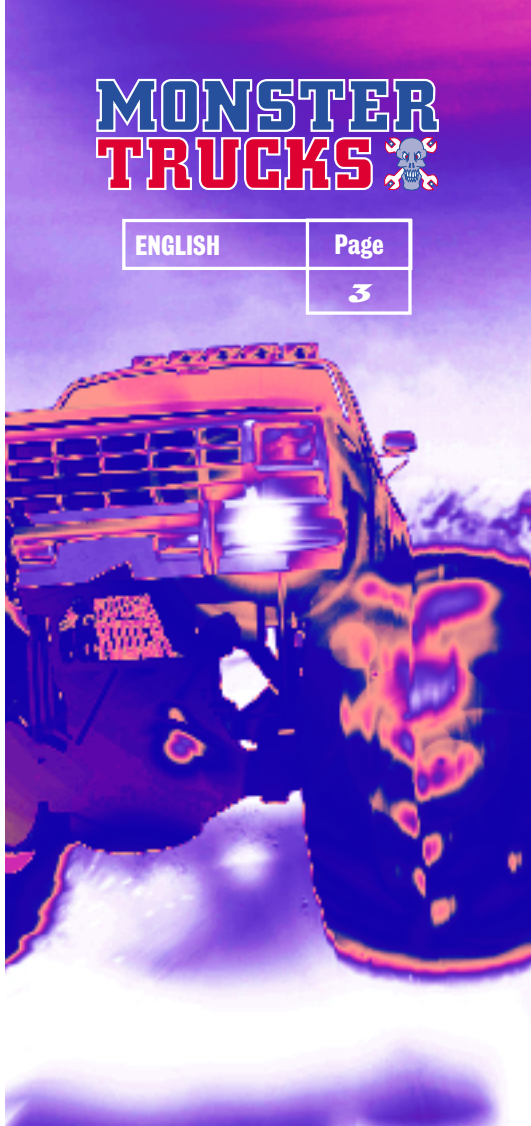
To configure sound type SETSOUND <enter>

To run the game, type MTRUCKS <enter>

# MONSTER TRUCKS



ENGLISH	Page
	3



# MONSTER TRUCKS



ENGLISH

Page

24

## *Default Controls*

Monster Trucks can be controlled using either a keyboard or a joystick. The keyboard is the default controller.

### **LEFT ARROW KEY**

Left

### **RIGHT ARROW KEY**

Right

### **DOWN ARROW KEY**

Reverse view while reversing

### **'A' KEY**

Accelerate

### **'Z' KEY**

Brake/Reverse

### **'S' KEY**

Horn

### **'W' KEY**

Helicopter Rescue (Endurance Mode Only)

### **ESC KEY**

Pause

### **SPACE BAR**

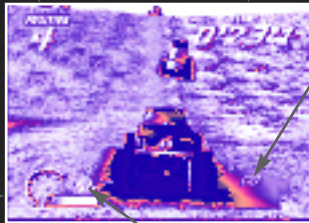
Change View

# Game Screens

## ENDURANCE

Position

Elapsed Time



Direction To  
Next  
Checkpoint

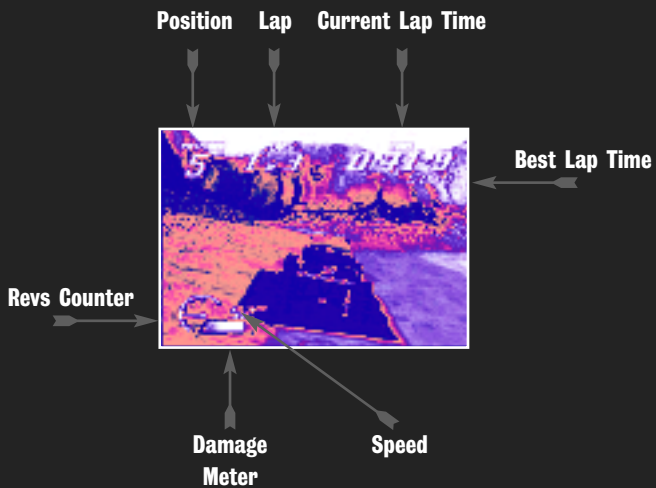
Revs Counter

Damage  
Meter

Speed

# Game Screens

## CIRCUIT RACING



# Game Screens

## CAR CRUSHING

Points  
Total

Countdown  
Timer

Opponent's  
Points  
Total



# MONSTER TRUCKS



ENGLISH

Page

8



## *Menus*

Navigate through the menu screens using the Up and Down arrow keys to highlight choices, then press the ENTER key to confirm your selection. Press the ESC key to return to the previous menu.

## *Main Menu*

### **SELECT RACE**

Takes you to the Select Race Menu.

### **GAME SET UP**

Takes you to the Game Set Up Menu.

### **SELECT TRUCK**

Takes you to the Select Truck Menu.

### **OPTIONS**

Takes you to the Options Menu.

### **GO**

Starts your chosen game.



## Select Race Menu

### CIRCUIT RACING

Selects the Circuit Racing competition. You will be able to select the circuit you wish to race on - use the Up and Down arrow keys to move the pointer to the circuit you want. Press the ENTER key to confirm your choice.

**NOTE:** If you are playing the game in Championship mode, you race the circuits in a pre-set order, therefore you won't be able to choose which circuit to race on.

### ENDURANCE

Selects the Endurance competition. You will be able to select the location at which you wish to race - use the Left and Right arrow keys to cycle through the available locations until the one you want is displayed, then use the Up and Down arrow keys to cycle through the available courses at that location. When your chosen location and course are displayed, press the ENTER key to confirm your choice.

**NOTE:** If you are playing the game in Championship mode, you race the courses in a pre-set order, therefore you won't be able to choose which course to drive on. Also, certain courses can only be 'unlocked' by winning promotion during a Championship competition.

### CAR CRUSHING

Selects the Car Crushing competition.

# MONSTER TRUCKS



ENGLISH	Page
	9



# MONSTER TRUCKS



ENGLISH

Page

10



## Game Set Up Menu

### CHAMPIONSHIP

Selects Championship mode.

**NOTE:** This mode is not available in conjunction with the Car Crushing competition.

### MULTIPLAYER

Selects the Multiplayer game. When selected, this option allows you to choose the number of players involved in the game. Use the Left and Right arrow keys to move the indicator between 2 players and 9 players. Press the ENTER key when the correct number of players is indicated.

**NOTE:** This mode is not available in conjunction with the Car Crushing competition.

### PRACTICE

Selects a Practice session.

### TIME TRIALS

Selects a Time Trial session.

**NOTE:** This mode is only available in conjunction with the Circuit Racing competition.

## Select Truck Menu

Use the Left and Right arrow keys to cycle through all the available vehicles - vehicle statistics are displayed on-screen. When the vehicle you want is displayed, press the ENTER key to confirm your choice.

# MONSTER TRUCKS

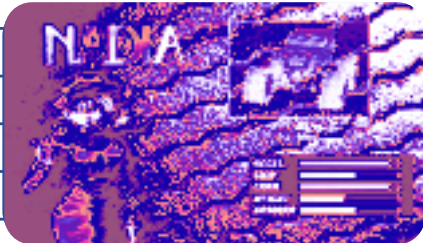
ENGLISH	Page
	77





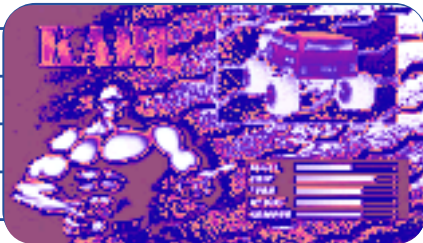
## *Enzo*

Enzo drives a big solid truck and ties back his flowing locks with the fan belt plucked from his favourite engine. He pretends to be vegetarian when chatting with the ladies, but really his favourite food is **BLOOD!**



## *Nadia*

Nadia likes reading philosophy books and looking at things through her stylish spectacles. She speaks 14 languages and drives like a maniac - some say she isn't really a woman, but a cyborg!



## *Karl*

Karl grows interesting facial hair and spends his spare time cultivating a sculptured, muscular physique. His stomach resembles granite - just like his brain.



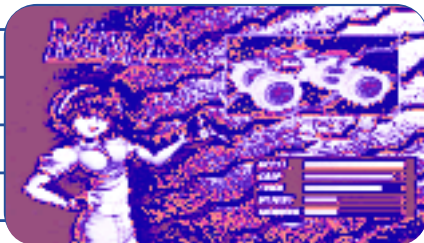
## *Lean*

Lean is mean. She only ever wears green and grey, and frankly, she's a vicious little minx. But at least her mother loves her.



## *Aaron*

Aaron suffered a bad hair day in July 1985, then the wind changed and he stayed like that forever! He enjoys toting firearms because he thinks it makes him look hard. We'll not tell him otherwise, eh?



## *Miyuki*

Miyuki sleeps by day and parties by night. Her hedonistic cyber-lifestyle entails no food and lots of herbal remedies served in a test tube. Her vehicle is small and cute, just like her!



## *Nail*

Nail is just like a nail. Hard and pointed. His truck is made from an old armoured car which means Aaron can't take pot shots at him, much as he'd like to. (It all dates back to a disagreement over a parking space. Just don't ask.)



## *Bear*

Bear's biceps are bigger than his vehicle which makes you wonder how he gets inside. "It's all done with mirrors," says Bear as he picks the seeds out of a pomegranate with the glistening blade of his bowie knife.



## *Michelle*

All the fellas have tried their luck with Michelle... but all have failed. She makes her cash modelling for the covers of House music compilations and spends what she earns on pleasure. The lads can only sit back, relax and watch.

# Options Menu

## DIFFICULTY

Select from Easy, Medium or Hard.

## CONTROLS

Choose from Select or Define. Select allows you to switch between Joystick and Keyboard using the Left and Right arrow keys. Define allows you to redefine the game controls as follows:

You will be taken to a screen which lists all the default controls of your currently selected controller - either keyboard or joystick.

At the bottom of the screen, a message prompts you to select your chosen 'Accelerate' key. Press the key you wish to use. The message will then ask you to select your chosen 'Brake' key. Again, press the key you wish to use. Continue until all your chosen keys have been set, then press either the ESC key to cancel the operation or the ENTER key to accept the new controls

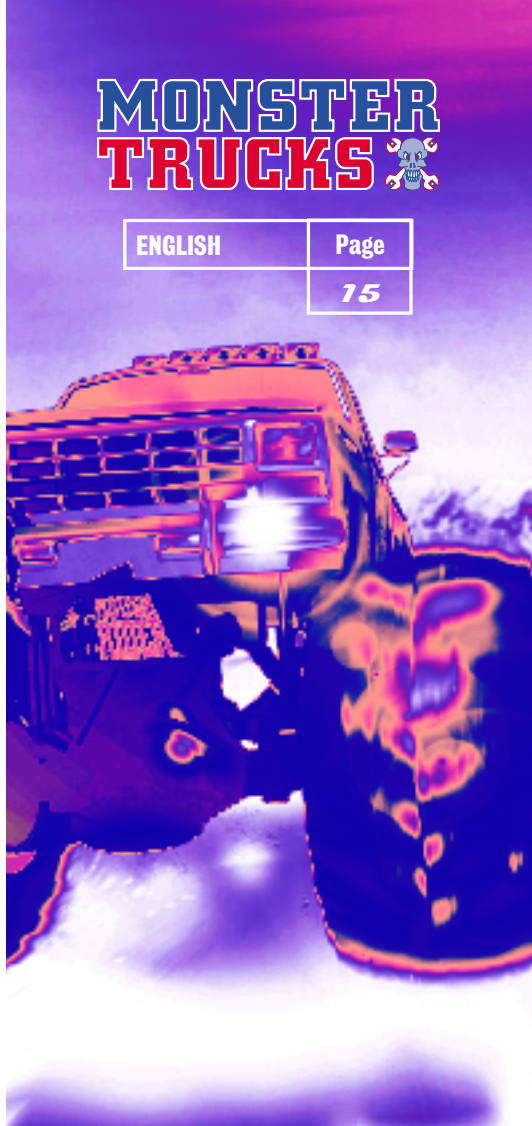
## AUDIO

Takes you to the Audio Menu. Use the Left and Right arrow keys to decrease or increase the volume of in-game sound effects.

# MONSTER TRUCKS



ENGLISH	Page
	15



# MONSTER TRUCKS



ENGLISH

Page

76



## DETAILS

Takes you to the Details Menu. Use the Up and Down arrow keys to highlight Gouraud Shading or Horizon, then use the Left and Right arrow keys to turn these features On or Off. Turning them off should increase the speed at which the game runs - this may be useful when playing on a slower machine.

## LOAD/SAVE

If you want to load a previously saved game, select Loading. This takes you to the Load screen.

If you want to save the current configuration, select Save Config. This takes you to the Save Config screen.

## *Load Screen*

Use the Left and Right arrow keys to switch between Load File or Delete File. Once your choice is displayed, press the ENTER key to select it.

Use the arrow keys to select the slot you wish to load or delete. Once the chosen slot is highlighted, press the ENTER key to confirm. If you have chosen to delete a file, you will be prompted to make sure you wish to continue. Use the Left and Right arrow keys to choose between the tick (for yes) or the cross (for no) then press the ENTER key to confirm.



## *Save Config Screen*

Use the Left and Right arrow keys to switch between Save File or Delete File. Once your choice is displayed, press the ENTER key to select it.

Use the arrow keys to select the slot you wish to delete or which you wish to save. Once the chosen slot is highlighted, press the ENTER key to confirm.

If you have chosen to save, you will need to enter a file name. Use the arrow keys to move round the letters, pressing the ENTER key to confirm each letter. Highlight the left facing arrow icon and press the ENTER key to delete a letter. Highlight the tick icon and press the ENTER key when the file name is entered correctly. The configuration will then be saved.

If you have chosen to delete a file, you will be prompted to make sure you wish to continue. Use the Left and Right arrow keys to choose between the tick icon (for yes) or the cross icon (for no) then press the ENTER key to confirm.

# MONSTER TRUCKS

ENGLISH	Page
	17



# MONSTER TRUCKS



ENGLISH

Page

18



## *Championship Menu*

When you finish a race in Championship or Multiplayer mode, you will see the Championship menu.

### **RESULTS**

Shows you the results of the last race.

### **LEAGUE**

Shows the current league standings taking into account the last race. Use the Left and Right Directional buttons to cycle through the 3 divisions.

### **SAVE GAME**

Allows you to save current league standings. Takes you to the Save Game screen.

### **NEXT RACE**

Continue with the championship.

## *Save Game Screen*

Use the Left and Right arrow keys to switch between Save File or Delete File. Once your choice is displayed, press the ENTER key to select it.

Use the arrow keys to select the slot you wish to save to or delete. Once the chosen slot is highlighted, press the ENTER key to confirm.

If you have chosen to save, you will need to enter a file name. Use the arrow keys to move round the letters, pressing the ENTER key to confirm each letter. Highlight the left facing arrow icon and press the ENTER key to delete a letter. Highlight the tick icon and press the ENTER key when the file name is entered correctly. The game will then be saved.

## *Pause Game Menu*

Press the ESC key during a game to pause it and see the Pause Game Menu.

### **QUIT**

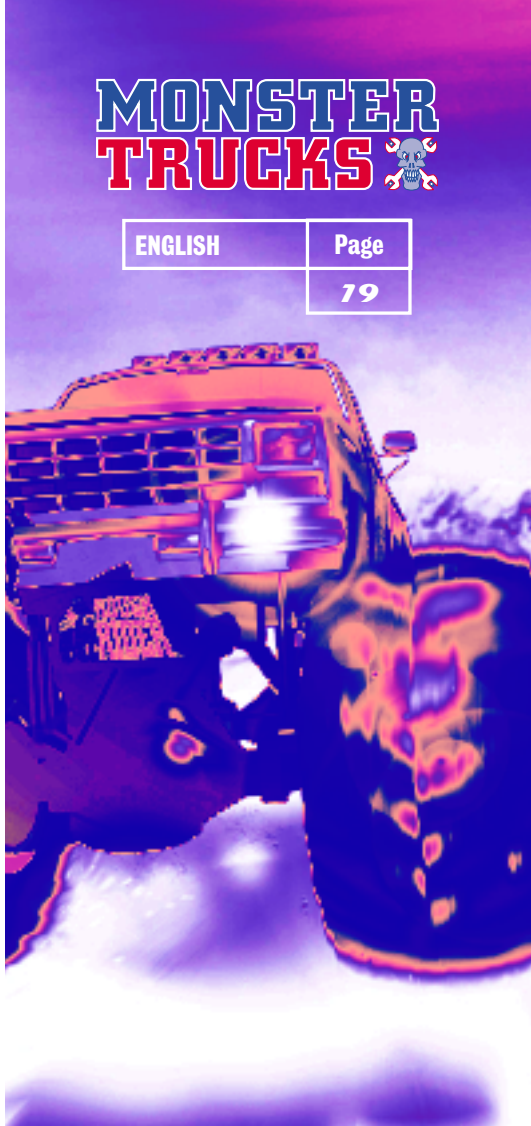
Abandon the current game.

### **CONTINUE**

Return to the current game at the point where it was paused.

# MONSTER TRUCKS

ENGLISH	Page
	19



# MONSTER TRUCKS



ENGLISH

Page

20



## *Playing The Game*

The basic vehicle controls can be found at the beginning of the manual.

### **CIRCUIT RACING**

Circuit Racing consists of powering round a marked circuit over 3 laps.

You're free to take short cuts if you think you can make it... but watch out. It's tough out there and that landscape doesn't want to make friends with you...

### **ENDURANCE**

In the Endurance competition, you compete against a field of 8 rival vehicles.

A number of checkpoints are distributed across the landscape. The aim is to be the first vehicle to reach all checkpoints. There is a rough track marked out, but if you think your vehicle can hack it, why not try and find a short cut?

There is an arrow in the bottom right corner of the game screen which shows you the direction of the next checkpoint. The number in the middle of this arrow indicates how many checkpoints are remaining.

When the arrow is pointing upwards, you are driving towards the checkpoint.

# MONSTER TRUCKS



ENGLISH

Page

21

If your vehicle gets stuck while you're playing in Endurance mode, pressing the 'W' key will call out the rescue helicopter. This will pick up your vehicle and place it on the course somewhere close to the last checkpoint you passed.

## CAR CRUSHING

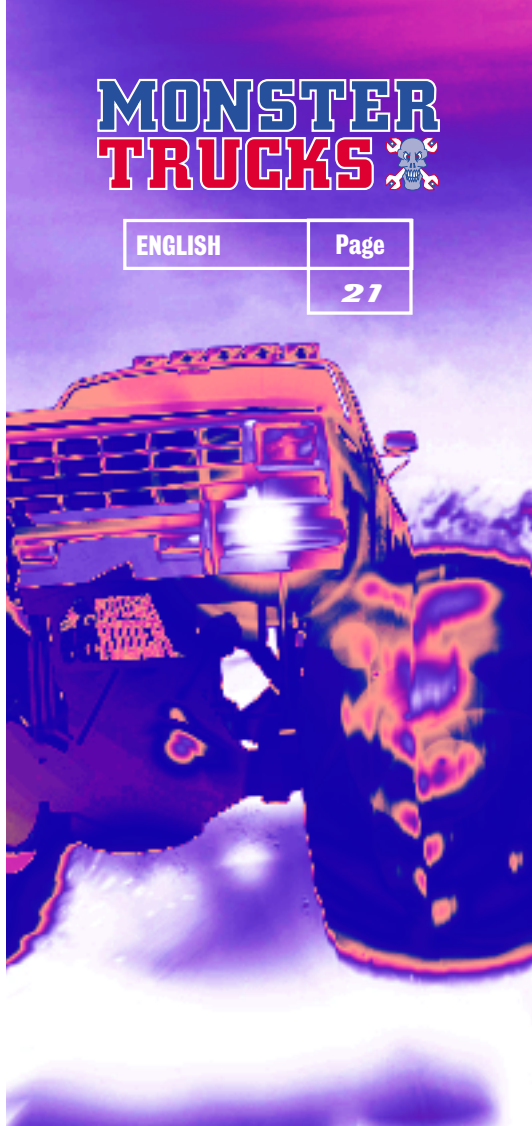
The Car Crushing competition takes place in a stadium. Two vehicles compete at once - one controlled by you, the other by your PC. The aim is to drive over the rows of cars, crushing them as you go and causing as much damage as possible. Points are awarded for damage caused, although each time you crush the same car, the points gained will be reduced. Once you have crushed a car, you should try and go for undamaged ones in order to win as many points as you can.

There is a limited amount of time available.

## CHAMPIONSHIPS

In Championship mode, you are pitted against the other 8 drivers in a league competition which takes place over a number of rounds. You can choose either a Circuit Racing championship or an Endurance championship. In either case, you begin the championship in Division 3. You will need to win the division to get promotion to Division 2 and ultimately to Division 1.

Drive through the circuits or courses in the pre-set order - points are awarded dependent on your finishing position. At the end of each race, you will be able to see the current league table (see section headed Championship Menu).



# MONSTER TRUCKS



ENGLISH

Page

22

Championship competitions are divided into seasons. At the end of each season you get the chance to boost your score by taking part in a Car Crushing showdown. Your final score is then calculated - if you finish first in the division you'll be promoted ready for the next season. But if you finish bottom... down you go. Will you manage to bounce back?

## MULTIPLAYER GAMES

Multiplayer games can include between 2 and 9 players - this can be selected when you choose Multiplayer from the Game Set Up Menu.

Players take it in turns to drive the chosen course or circuit. Once all players have had their turn, you will be able to see the current league table (see section headed Championship Menu) before moving on to the next track or circuit.

## PRACTICE SESSIONS

Practice sessions are one-off contests on the course or circuit of your choice. They include a full field of 8 other vehicles competing against you, but they also give you the chance to get used to the lay of the land ready for a no-holds-barred Championship competition.

## TIME TRIALS

Race against the clock on your chosen course. No other drivers appear - it's just between you and your heartbeat.

# MONSTER TRUCKS



ENGLISH	Page
	23

## BRAKING/REVERSING YOUR VEHICLE

It's possible to reverse your vehicle out of trouble using the 'Z' key - this is the same button you use as the brake. If you press the button quickly, your vehicle will be slowed down sharply, coming to a complete halt if it's held down longer. If you continue to hold the button down once the vehicle has stopped, it will begin to reverse.

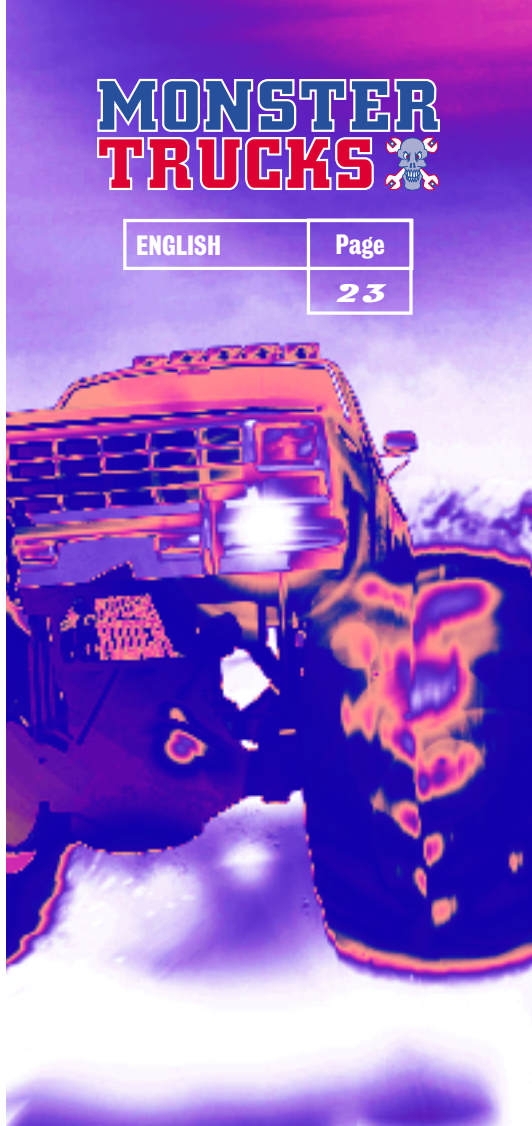
While you're reversing, you might find it useful to flip the camera round so that you can see behind your vehicle. Do this by pressing the Down arrow key as you reverse. The camera will return to its usual view when you stop reversing or when you release the Down arrow key.

## SUSTAINING DAMAGE

While playing in either the Endurance or Circuit Racing modes, you will see a Damage Meter in the bottom left corner of the screen. It is located next to the speedometer and revs counter. It consists of a coloured bar which reduces in size each time your vehicle sustains damage. When the coloured bar on the Damage Meter disappears, it means your vehicle is wrecked and your current race is over.

## USING THE HORN

If you make a manoeuvre you're particularly proud of, why not let the world know you're ace by giving a quick blast on the horn? Press the 'S' key to do this. Best used when screeching past a helpless rival as you pluck victory from their grasp.



# MONSTER TRUCKS



ENGLISH

Page

24



## *Credits*

### *Game Concept*

MARTIN EDMONDSON

### *Design Detail*

REFLECTIONS

### *Programming*

NATHAN WHITAKER

WILL MUSSON

CHRIS KIRBY

TONY ROBERTS

JASON WHITAKER

### *Graphics*

AIDEN WILSON

JOHN STEELE

PHIL BAXTER

RICHARD BESTON

ANDREW SHARRATT

### *3D Modellers*

MATT GIBSON

CHRIS WILLIAMS

SHAUN STEPHENSON

### *Island Design*

ANDREW SHARRATT

JOHN STEELE



# MONSTER TRUCKS



ENGLISH

Page

25

## *Sound*

DAVID TAYLOR

## *Music*

SHAUN MORRIS

## *Additional*

## *Music*

## *Programming*

ALLISTER BRIMBLE

TIM WRIGHT

## *Intro Music*

'JUG'

## *Senior Producer*

TONY PARKES

## *Associate*

## *Producer*

PAUL EVASON

## *Head Producer*

STEVE RIDING



# MONSTER TRUCKS



ENGLISH

Page

26



## *Quality Assurance*

KEVIN TURNER - QA MANAGER

DAVE PARKINSON

JOHANNA MURPHY

ROB WOLFE

PAUL TWEEDLE

ALAN MAWER

THOMAS REES

GREIG BROWN

DAVID BLAKEBOROUGH

STEPHEN ALLEN

ANDY DURNEY

JOHN WALSH

PETER WALTON

CHRIS GRANELL

## *Sound Effects*

MIKE CLARKE

## *Project Manager*

DAVID RILEY

## *Product Managers*

NADIA LAWLOR (UK)

SABINE WESTENBERGER (GERMANY)

CAROLINE DUPUY (FRANCE)

STEFANIE WASSALL (AUSTRALIA)

DAWN WILLIAMS (INTERNATIONAL)

JANE HICKEY (INTERNATIONAL)

## *Public Relations*

GARY NICHOLS (UK)

INGO ZABOROWSKI (GERMANY)

BENOITE LAVIE (FRANCE)

STEFANIE WASSALL (AUSTRALIA)

## *Packaging And Manual Design*

RICHARD TURNER

## *Manual Editor*

DAMON FAIRCLOUGH

## *Surgical Support*

KELLY EVANS

LORNA OWEN

## *Psygnosis Customer Services*

Tel 0151 282 3333 Monday - Friday 9:00am to 5:30pm

Fax 0151 282 3001

e-mail [help.line@psygnosis.co.uk](mailto:help.line@psygnosis.co.uk)

web [www.psygnosis.com](http://www.psygnosis.com)

### **CUSTOMER SERVICES**

**Psygnosis Limited**

**Napier Court**

**Stephenson Way**

**Wavertree Technology Park**

**Liverpool**

**L13 1HD**

# MONSTER TRUCKS



ENGLISH	Page
	27

