

<http://www.replacementdocs.com>

XBOX



Goblin Commander™

UNLEASH THE HORDE



Jaleco Entertainment, 119 West Tupper Street, Buffalo, NY 14202 USA

© 2003 Jaleco Entertainment. All rights reserved. Jaleco Entertainment, the Jaleco Entertainment logo, Goblin Commander and the Goblin Commander: Unleash the Horde logo are trademarks or registered trademarks of Jaleco Entertainment in the United States and other countries. Uses: Granny Animation. Copyright © 1999-2003 by RAD Game Tools, Inc. Microsoft, Xbox, and the Xbox Logos are either registered trademarks or trademarks of Microsoft Corporation in the U.S. and/or other countries and are used under license from Microsoft.



www.jaleco.com



ABOUT PHOTOSENSITIVE SEIZURES

A very small percentage of people may experience a seizure when exposed to certain visual images, including flashing lights or patterns that may appear in video games. Even people who have no history of seizures or epilepsy may have an undiagnosed condition that can cause these "photosensitive epileptic seizures" while watching video games.

These seizures may have a variety of symptoms including: Lightheadedness, altered vision, eye or face twitching, jerking or shaking of arms or legs, disorientation, confusion, or momentary loss of awareness. Seizures may also cause loss of consciousness or convulsions that can lead to injury from falling down or striking nearby objects.

Immediately stop playing and consult a doctor if you experience any of these symptoms. Parents should watch for or ask their children about the above symptoms—children and teenagers are more likely than adults to experience these seizures.

The risk of photosensitive epileptic seizures may be reduced by:

- sitting farther from the television screen,
- using a smaller television screen,
- playing in a well-lit room, and
- not playing when you are drowsy or fatigued.

If you or any of your relatives have a history of seizures or epilepsy, consult a doctor before playing.

AVOID DAMAGE TO YOUR TELEVISION

Do not use with certain televisions. Some televisions, especially front-or rear-projection types, can be damaged if any video games, including Xbox games, are played on them. Static images presented during the normal course of game play may "burn in" to the screen, causing a permanent shadow of the static image to appear at all times, even when video games are not being played. Similar damage may occur from static images created when placing a video game on hold or pause. Consult your television owner's manual to determine if video games can be safely played on your set. If you are unable to find this information in the owner's manual, contact your television dealer or the manufacturer to determine if video games can be played on your set.

OTHER IMPORTANT HEALTH AND SAFETY INFORMATION

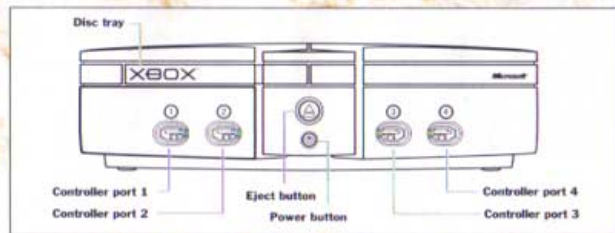
The Xbox video game system documentation contains important safety and health information that you should read and understand before using this software.

Unauthorized copying, reverse engineering, transmission, public performance, rental, pay for play, or circumvention of copy protection is strictly prohibited.

Table of Contents

Getting Started	2
Game Controls	3
COMMANDER CONTROLS	4
GOBLIN CLAN CONTROLS	5
TITAN CONTROLS	5
Main Menus	6
CAMPAIGN MENU	6
SKIRMISH MENU	8
OPTIONS MENU	9
Playing the Game	10
THE GOBLIN COMMANDER	10
Playing the Game User Interface	12
USER INTERFACE	12
Structures	14
THE CLANSHRINE	14
THE HALL OF TITANS	15
THE OBSERVATORY	17
THE ALCHEMIST SHOP	18
Strategy	20
The Chronicle of Being	22
Stonekrusher	24
Hellfire	26
Stormbringer	28
Plaguespitter	30
Nighthorde	32
Credits	34

Getting Started



Using the Xbox Video Game System

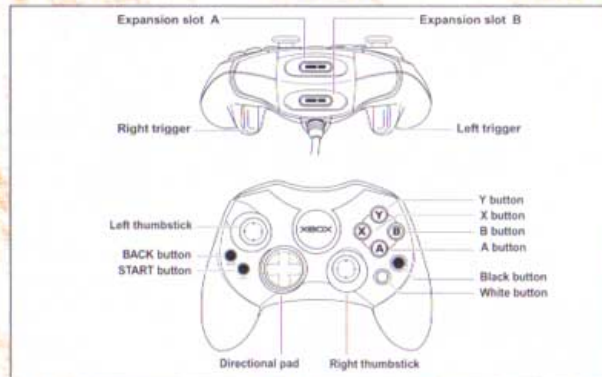
1. Set up your Xbox™ video game system by following the instructions in the Xbox Instruction Manual.
2. Press the power button and the status indicator light will light up.
3. Press the eject button and the disc tray will open.
4. Place the **GOBLIN COMMANDER** disc on the disc tray with the label facing up and close the disc tray.
5. Follow on-screen instructions and refer to this manual for more information about playing **GOBLIN COMMANDER**.

AVOIDING DAMAGE TO DISCS OR THE DISC DRIVE

To avoid damage to the discs or disc drive:

- Insert only Xbox-compatible discs into the disc drive.
- Never use oddly shaped discs, such as star-shaped or heart-shaped discs.
- Do not leave a disc in the Xbox console for extended periods when not in use.
- Do not move the Xbox console while the power is on and a disc is inserted.
- Do not apply labels, stickers, or other foreign objects to discs.

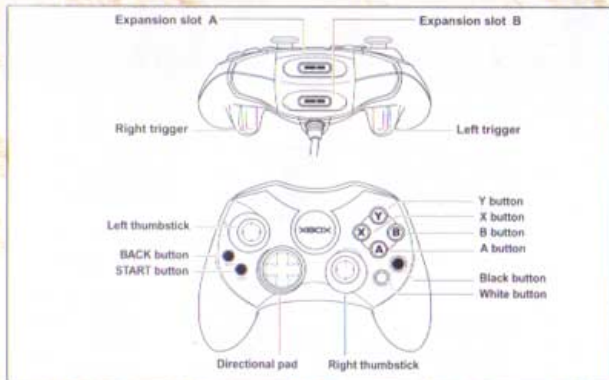
Game Controls



Using the Xbox Controller

1. Insert the Xbox Controller into any controller port on the Xbox console. For multiple players, connect additional controllers to available controller ports.
2. Insert any expansion devices (for example, Xbox Memory Units) into controller expansion slots as appropriate.
3. Follow all on-screen instructions and refer to this manual for more information about using the Xbox Controller to play **GOBLIN COMMANDER**.





COMMANDER CONTROLS

Left thumbstick.....	Move Commander
Right thumbstick.....	Zoom In/Out
A button.....	Clan button: Waypoint Flag; Attack Enemy or Structure; Defend Structure; Follow Titan <i>Inside Clanshrine:</i> Repair Structure <i>Fast Forward Cutscenes</i>
X button.....	Clan button: Waypoint Flag; Attack Enemy or Structure; Defend Structure; Follow Titan
B button.....	Clan button: Waypoint Flag; Attack Enemy or Structure; Defend Structure; Follow Titan
Y button.....	Take Direct Control of Clan/Titan; Enter Clanshrine/Hall of Titans When Over Destroyed Structure: Rebuild When Over Placed Turret: Destroy's Player Turret
BACK button.....	Toggle On-Screen UI modes: Novice, Normal and Expert
START button.....	Access Options Menu
up on the Directional pad.....	Move Commander to Home Markers
down on the Directional pad.....	Move Commander to Last Mini-Map Ping*
left on the Directional pad.....	Access Help
right on the Directional pad.....	Access Mission Objectives

*Ping – Mini-Map Event Signal

Left trigger.....	Hold + Clan button: to Place Multiple Waypoints Hold + up Directional pad: Place Home Markers
Right trigger.....	Enlarge Mini-Map
White button.....	Use Item in Left Inventory Slot
Black button.....	Use Item in Right Inventory Slot

Goblin Clan Controls

Left thumbstick.....	Move Unit
Right thumbstick.....	Zoom/Rotate Camera
A button.....	Clan button: Attack; Place Waypoint Flag; Double-tap to Follow
X button.....	Clan button: Attack; Place Waypoint Flag; Double-tap to Follow
B button.....	Clan Button: Attack; Place Waypoint Flag; Double-tap to Follow
Y button.....	Release Clan
BACK button.....	Toggle On-Screen UI modes: Novice, Normal and Expert
START button.....	Access Options Menu
left on the Directional pad.....	Access Help
right on the Directional pad.....	Access Mission Objectives
Left trigger.....	Hold + Clan button: Place Waypoint Flag Hold + Double-Tap Clan button: Follow
Right trigger.....	Enlarge Mini-Map
White button.....	Use Item in Left Inventory Slot
Black button.....	Use Item in Right Inventory Slot

Titan Controls

Left thumbstick.....	Move Unit
Right thumbstick.....	Move/Rotate Camera
A button.....	Primary Attack (if available)
X button.....	Special Attack
B button.....	Secondary Attack (if available)
Y button.....	Release Titan
BACK button.....	Toggle On-Screen UI modes: Novice, Normal and Expert
START button.....	Access Options Menu
left on the Directional pad.....	Access Help
right on the Directional pad.....	Access Mission Objectives
Left trigger.....	Hold + Clan button: Set Waypoint Flags/Waypoint Paths Hold + Double-Tap Clan button: Follow
Right trigger.....	Enlarge Mini-Map
White button.....	Use Item in Left Inventory Slot
Black button.....	Use Item in Right Inventory Slot

Main Menu



- Campaign**..... Start or continue a single-player game
Skirmish..... Start a Multi-Player game on one of the many maps
Options..... Adjust the settings for the game
Credits..... View Credits

To navigate the **Main Menu**, press **up** or **down** on the **Directional pad**, and press the **A button** to confirm the selection.

Campaign Menu

From the **Campaign Menu**, the player has the option to either start a New game or Continue a game that is already in progress. To do so, highlight the appropriate choice and press the **A button** to confirm the selection. To return to the **Main Menu**, press the **B button**.

NEW GAME

The player has three slots that they can use to start a New single-player campaign. To do so, navigate to one of the three slots and press the **A button**. The player will then be prompted to enter a Profile Name from the Character Screen provided.



Main Menu

To navigate the **Character Screen**, use the **Directional pad**. To select a highlighted character, press the **A button**. To remove the last character, navigate to **Delete** and press the **A button**. When finished entering a **Profile Name**, navigate to **Done** and press the **A button**. This will start the game from the beginning with the **Profile** that has been provided.

To cancel and return to the **Campaign Menu**, press the **B button**.

MANAGING A PROFILE

To **Continue** a game, **Load** a game or **Delete** a Campaign, navigate to the tab that contains the appropriate **Profile Name** and press the **A button** to access the **Profile Menu**. To return to the **Campaign Menu**, press the **B button**.



Continue allows the player to start from any level or view any cinematic that they have already completed. To choose an **Act** (where applicable), press left or right on the **Left thumbstick**. To choose a **Level**, press up or down on the **Left thumbstick**. To start, press the **A button**.

Load Game allows the player to resume any **Saved Game**. To do so, navigate to the desired **Save Profile**, and press the **A button**.

To **Delete** the currently selected Campaign, highlight it and press the **A button**. The player must then navigate to **Yes** to confirm or to **No** to cancel and return to the **Profile Menu**.

To return to the **Campaign Menu**, highlight **Back** and press the **A button**.

BACK

To return to the **Main Menu**, highlight **Back** and press the **A button**.

Main Menu

Skirmish Menu

From the **Skirmish Menu**, the player has the opportunity to play one of the many maps that have been designed for use in **Multiplayer** mode. To return to the **Main Menu**, press the **B** button.



START

To cycle through the maps available, press left or right on the **Directional pad**. To Start a Skirmish game on the currently selected map, press the **A** button. When doing so, the player will have the opportunity to customize their game from the First Player Options screen provided.

PLAYER OPTIONS

Using the **Directional pad**, the player will have the opportunity to set the First Player Options, granting them the ability to customize the Clans that will be controllable, the amount of Souls and Gold to start with, the Tech level of their clans (which correlates to the number of different units available from each clanshrine) as well as the ability to use Titans and Turrets.



When finished with the First Player Options, press the **A** button to set the

Second Player Options. When satisfied, press the **A** button to start the game.

BACK

To return to the **Main Menu**, highlight Back and press the **A** button.

Main Menu

Options Menu

The **Options Menu** grants the player access to all of the settings that can be adjusted in the game. To navigate, press up or down on the **Directional pad**, and press the **A** button to confirm. To return to the **Main Menu**, press the **B** button.



AUDIO

From Audio, the player can adjust the volume levels for both the Sound Effects and the Music for the game. To adjust the levels, use the **Directional pad** to highlight the appropriate setting, and press left or right on the **Directional pad**. When satisfied, press the **A** button to confirm the selections. To cancel, press the **B** button to return to the **Options Menu**.



CONTROLS

Toggle Controller Vibration on/off for each player. Camera Invert will reverse the camera control for that player. To select, press up or down on the **Directional pad**. To toggle the setting, press right or left on the **Directional pad**. To confirm selections, press the **A** button.



To cancel, press the **B** button to return to the **Options Menu**.

BACK

To return to the **Main Menu**, highlight Back and press the **A** button.

Playing the Game

The Goblin Commander



The player uses their glowing cursor, or **GOBLIN COMMANDER**, to control their various clans. With it, the player can issue orders in the form of Waypoint Flags, take Direct Control of their clan or Titan units as well as access various Structures.

RESOURCES

Buying Goblins, Titans and Turrets costs Souls and Gold.



SOULS

Souls are collected whenever an enemy is defeated in battle, a clan has captured and maintained control over a Soul Fountain, or a Soul Cache is discovered.



GOLD

Gold comes in a variety of forms: Coins, Nuggets, Gems and Gold Chests. Coins, Nuggets and Gems can be found by destroying structures while Gold Chests can be found hidden in the levels.



MISSION OBJECTIVES

Mission Objectives are a list of goals that are associated with achieving victory over a certain map or region. To view Mission Objectives, press **right on the Directional pad**.



Playing the Game



HELP

When specific Help is available on an item in the game world, a Question Mark Icon will appear floating above it. To retrieve Help on that item, move the Commander over the item, and press **left on the Directional pad**.

Help is also available on any object or building in the world by placing the Commander over it and pressing **left on the Directional pad** when the Question Mark Icon appears in the Directional Button Display.

Signified by a platform with a floating question-mark over it, there are also specific instances throughout the game where a Help Pad will be placed in the game world. To access the Help Pad, either direct the Commander over it or position the unit under Direct Control on top of it, and press **left on the Directional pad**.

SAVING AND LOADING

In *Goblin Commander: Unleash the Horde*, the player will have the option to Save, Load and access the **Main Menu** from anywhere in the game by pressing the **START button**.

To navigate the **START Menu**, press up or down on the **Directional pad**.



Playing the Game

User Interface

User Interface

The User Interface refers to the items that appear on the screen designed to provide the player with quick information about the game. The User Interface can be viewed in three different modes: Novice (all UI elements are displayed at all times), Normal (UI elements slide off the screen when not in use), and Expert (All UI elements disappear). To change the mode for the User Interface, press the **BACK** button.



1 SOUL BANK

The amount of Souls that are currently available to the player.

2 GOLD BANK

The amount of Gold that is currently available to the player.

3 GOBLIN COUNTER

The Goblin Counter displays the Clan Icon for each currently controlled clan with a number below detailing how many goblins, out of a total of 10, currently exist in the world.

4 DIRECTIONAL PAD DISPLAY



Up - Home Markers – Once placed, Home Markers will take the player immediately to a point on the map when in Commander mode.

Playing the Game

User Interface



Down - Last Ping – This takes the player back to the last Mini-Map ping.



Left - Help – This displays context-sensitive Help on items and structures depending on the proximity of the Commander or Directly Controlled Units.



Right - Mission Objectives – This displays the current Mission Objectives. The Check icon will flash when the Mission Objectives have been updated.

5 TOOLTIP DISPLAY

When applicable, a context sensitive Tooltip Display related to the functionality of nearby objects or characters in the game will appear.

6 THE MINI-MAP

The Onscreen Map offers the player a bird's-eye view of the current level with the player's current position and the position of their Commander, signified by a Gray Cursor.

When in Direct Control, the position and heading of the player's units are signified by a Yellow Arrow.

Blips are signified by small multi-colored squares that identify certain items or characters that exist on the Onscreen Map.

Green Blip – Friendly Unit

Red Blip – Enemy Unit

Yellow Blip – Gold

Blue Blip – Soul Fountains/Soul Caches

Pings are signified by a rotating cursor that contracts to a particular point of action on the Onscreen Map.

Green Ping – A structure has been captured

Yellow Ping – A friendly unit or structure is under attack

Red Ping – A friendly unit or structure has been lost

To expand the Onscreen Map, press and hold the **Right trigger**.

The Expanded Map increases the level of detail of the Onscreen Map. In turn, many objects that appear as Blips on the Onscreen Map appear as Icons on the Expanded Map.

Structures

The Clanshrine

The Clanshrine is a structure that allows the player to Buy goblins, unlock Caged goblins and Upgrade their units. To enter the Clanshrine, position the Commander over it and press the **Y button**. To exit the Clanshrine, press the **Y button** again.



BUYING GOBLINS

Each clan consists of four goblin Warriors and one Support unit, situated from left to right in ascending order on the back pedestals of the Clanshrine. To navigate, use the **Left thumbstick**. When highlighted, the unit's stats will be displayed at the bottom right of the screen.



Goblins cost Resources, which are displayed at the bottom of the screen. To buy the highlighted goblin, press the **A button** and it will appear outside the Clanshrine, moving to the current Waypoint Flag.

No clan can have more than 10 goblins at any time. Notice the Clan Icons located at the bottom

left of the screen. This indicates how many goblins the player currently has in their clan. Keep in mind that only one Support unit can exist at any given time.

UNLOCKING CAGES

Goblins that are not currently available appear in Cages. Unlocking a cage costs Resources, which are displayed at the bottom of the screen. To unlock a goblin and make it available for purchase, select it and press the **A button**.

UPGRADING YOUR GOBLINS

Located on the front pedestals, each clan has a set of three Upgrades. The first two apply to all goblins in the clan while the last applies to the clan's Support unit. Only when the Support unit is unlocked will its Upgrade appear. Each of the Upgrades can be purchased three times.

Structures

Upgrades cost Resources, which are displayed at the bottom of the screen. To buy an Upgrade, select it and press the **A button**. When purchased, the Upgrade will be applied to the stats of the appropriate goblins.

REPAIRING THE CLANSHRINE

To repair a Clanshrine, enter the building and press the **A button** in the center of the building, while the UI states repair costs.

The Hall of Titans



The Hall of Titans is a structure that houses all Titans and Turrets. Each clan that is under the player's control will have one Titan and one Turret associated with it.

To enter the Hall of Titans, position the Commander over it and press the **Y button**. To exit the Hall of Titans, press the **Y button** again.

PURCHASING TITANS

Titans are huge monstrosities that can be used to inflict heavy damage upon enemies. All available Titans are situated on the pedestals located at the back of the Hall of Titans. To navigate, use the **Left thumbstick**.

Titans cost Resources, which are displayed at the bottom of the screen. To buy the highlighted Titan, press the **A button**.

When purchased, Titans will appear in front of the Hall of Titans, ready for use.

Only one Titan can be purchased at any given time.



Structures

PURCHASING TURRETS

Turrets are defensive structures that can be used to fend off enemies. All available Turrets are situated on the pedestals located to the front of the Hall of Titans.

All Turrets cost Resources, which are displayed at the bottom of the screen. To buy the highlighted Turret, select it and press the **A button**.

All Turrets must first be placed in the game world before becoming operational. When purchased, the Commander will appear outside the Hall of Titans with the Turret attached and ready for placement.

Each Turret has a Placement Halo. When the Placement Halo is Red, the unit cannot be placed in the chosen area. However, when the Placement Halo is Green, the Turret can be placed. When a suitable area is chosen, press the **A button** to place the Turret.

To cancel the purchase, press the **Y button**. Only three Turrets can be operational at any given time.

DESTROYING TURRETS

To destroy the unwanted Turret, position the Commander above it and press the **Y button**. If there are friendly units in the area, they must first be moved before it can be destroyed.



Structures

The Observatory



Tied to the power of the five moons, the Observatory is a place to purchase Moonstones.

MOONSTONES

Etched with symbols of the five moons, Moonstones can magically enhance the damage of the individual clan that it is tied to for a short period of time.

Moonstones can either be found in the world or purchased at the Observatory.

To pick up a Moonstone, direct goblins over it. Once picked up, an icon for the Moonstone as well as its activation button will appear in a free Inventory Slot.

To use a Moonstone, press the corresponding **White button** or **Black button**.



Structures

The Alchemist Shop

The Alchemist Shop is a place to purchase a wide variety of magical Runestones.

RUNESTONES: Etched with archaic symbols, Runestones can invoke a wide variety of magical effects.

Runestones can either be found in the world or purchased at the Alchemist Shop.

To pick up a found Runestone, direct goblins over it. Once picked up, an icon for the Runestone as well as its activation button will appear in a free slot.

INVENTORY SLOT: To use a Runestone, press the corresponding **White button** or **Black button**.



FIRESTORM: Rains fire and brimstone down upon the heads of all enemies. Best used against Buildings.



HEAL: Heals all friendly units.



SLOW: Decreases the movement rate of enemy units to 50% for a small amount of time, excellent for retreat tactics.



ACID CLOUD: Unleashes burning acid rain on all enemies over a wide area. Not useful on structures.



VISION: Allows the player to clear the fog of war from a portion of the map where it is used.



Structures



LIGHTNING: Summons lightning strikes down upon all enemies. Best used on structures.



SOUL DRAIN: Saps health and souls from enemy units in a wide area of effect.



FREEZE: Calls an icy wind that freezes all enemies for a certain amount of time.



BONESAW: Summons whirling magical blades that carve up and distract enemies.



TRANSMOGRIFY: No one is really sure what the Transmogrify Runestone does.



EARTHQUAKE: Triggers a violent tremor that damages all enemies and wrecks buildings.



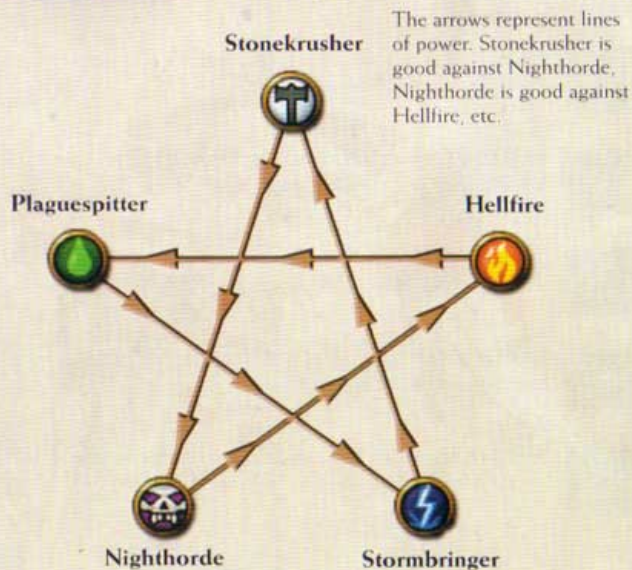
SHIELD: Increases the armor value of all friendly units to an almost god-like state for a limited amount of time.



Strategy

There are five clans in **Goblin Commander**.

THERE IS A BALANCE OF POWER BETWEEN THE CLANS, AS SHOWN IN THE FOLLOWING CHART.



The arrows represent lines of power. Stonekrusher is good against Nighthorde, Nighthorde is good against Hellfire, etc.



Clan Waypoints

Home

Strategy

COMMANDS



MINI-MAP ICONS



Clanshrines



The Chronicle of Being



OUR STORY is not one of providence... not one of divinity or evolution from the primordial slime. Those stories we leave to humans and their unrelenting thirst for pride. For us, our kind was not so much born, as we were created... wrought through the power of the Moonstone by the human wizard Frazier: at once granted life, granted form and made whole. Conjured to serve as laborers for his most momentous achievement: a 'Great Machine' that the master swore would grant us power beyond our wildest dreams.

As five our race began, blessed by the power of creation: five children of the moons that formed us: five champions to guide us on. Born with the ability to become one with the moonlight, where they led... we knew we would always follow... what they commanded... we would give our lives to achieve.

Grommel was first-born, set to work the cavernous mines. Formed unto the power of the white moon Froxx, he and his Stonecrusher clan rended the very earth in their endless search for stone and precious metals.

Grax the fervent was second, born under the watchful eye of the red moon Heelinx. Sharp-eyed and industrious, he and his Hellfire clan harvested the dark forests of Ogriss,

laking to the depth of the woodlands of the east, and making them their own.

Faine the learned came soon after. Formed by the blue moon Trisl, he and his Stormbringer clan conducted strange magical experiments on the slopes of the southern mountains; chasing the possibilities of the strange force that they called 'electricity'.

From the green moon Phoust came Syst the reaper. Back bent to the soil, he and his Plaguespitter clan gathered rare plants and herbs from the slime of the western marshes. At one with nature, they mastered the art of toxicology, using their knowledge of volatile extracts to fuel the Great Machine.

The last was brooding Naxus, the darkest of the five. Born in the shadow of the purple moon Farthis, he and his Nighthorde clan were the scroungers of our kind, ravaging the cursed soil of the ancient battlegrounds in search of lost wisdom and bone.

It was a good life for our kind... a simple time of modest needs and clear purpose.

But as they say in the Master's tongue, nothing can last forever...

STONEKRUSHER

Born of the white moon Froxx, the Stonekrusher clan is the most straightforward and durable of all the goblin clans, attacking their grueling work in the northern volcanic mines with a devastating sense of tenacity and vigor.



GROMMEL

Clan-chief of the Stonekrusher clan, he and his kind bulldoze through the rubble of the industrial mines in search of precious metals.



STONE OGRE

Long ago, the Stone Ogres lost the war for the mines to their Stonekrusher neighbors. Now subjugated, they use their colossal strength in service of their goblin masters.

- To **Move**, use the **Left thumbstick**.
- To **Pick up** and eat a small creature, press the **X button**.
- To **Attack** with a downward bash, press the **A button**.
- To **Attack** with a sweeping swing, press the **B button**.



Rock Lobber

Hewn from massive blocks quarried from deep within the bowels of Ogriss, the Rock Lobber rains mighty boulders down upon any who dare enter Stonekrusher territory.



MINER
Combat
Toughness
Attack
Bonuses

MELEE UNIT
Average
Good
Blunt
Armor vs. Piercing damage
Excellent vs. Structures



ROCK THROWER
Combat
Toughness
Attack
Bonus

RANGED UNIT
Good
Average
Blunt
% chance to knock back



LUGGER
Combat
Toughness
Attack
Bonus

MELEE UNIT
Good
Good
Blunt
% chance to stun enemies



PITBOSS
Combat
Toughness
Attack
Bonuses

SHORT RANGE UNIT
Excellent
Excellent
Slashing
% chance to kill instantly



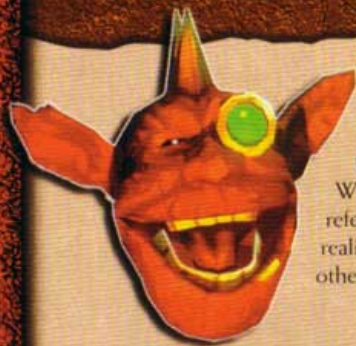
DRUMMER
Combat
Toughness
Attack
Bonuses

SUPPORT UNIT
None
Excellent
None
Heals nearby units

STONEKRUSHER

Hellfire

Spawned from the red moon Heelinx, the Hellfire clan dedicates its time to finding ingeniously bold and wildly destructive ways to harvest vast amounts of lumber from the dense forests of Ogriss.



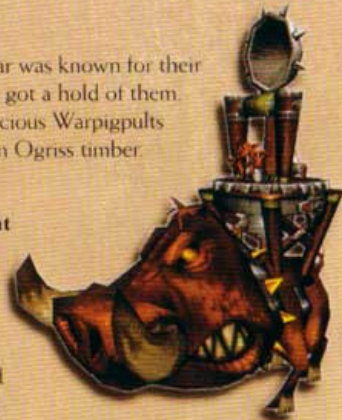
Grax

When talking about Grax, the Hellfire clan refers to their leader as 'funny'. What they don't realize is that their definition of 'funny' is what others would call down right maniacal.

Warpigpult

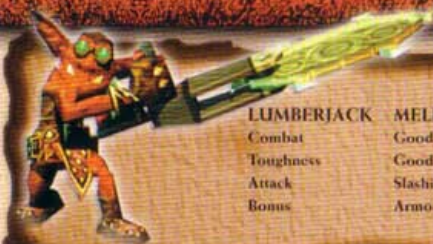
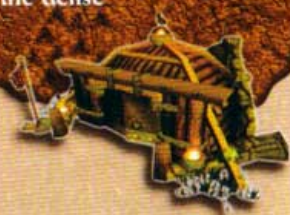
When roaming free, this race of giant boar was known for their gentle dispositions, then the Hellfire clan got a hold of them. Outfitted with a catapult system, the ferocious Warpigpults are used to level vast expanses of stubborn Ogriss timber.

- To **Move**, use the **Left thumbstick**
- To **Rotate** the catapult, use the **Right thumbstick**
- To **Switch** ammo types from Rock to Fire, press the **X button**
- To **Fire** the catapult press, hold and release the **A button** or pull back and release (flick) the **Right thumbstick**



LENS CANNON

Fitted with lenses crafted from tree sap, the Hellfire clan designed its Lens Cannon to channel the rays of the sun into deadly beams of scorching white-hot energy.



LUMBERJACK	MELEE UNIT
Combat	Good
Toughness	Good
Attack	Slashing
Bonus	Armor vs. Slashing damage



ARCHER	RANGED UNIT
Combat	Good
Toughness	Poor
Attack	Piercing
Bonus	Armor vs. Piercing damage



HUNTER	RANGED UNIT
Combat	Excellent
Toughness	Poor
Attack	Piercing
Bonus	% chance to kill instantly



BOMBARDIER	RANGED UNIT
Combat	Good
Toughness	Average
Attack	Fire Damage
Bonuses	Area damage Excellent vs. Structures



SCOUT	SUPPORT UNIT
Combat	None
Toughness	Good
Attack	None
Bonus	Increases vision

Stormbringer

Born of the blue moon Trist, the Stormbringer clan is the most knowledgeable of all goblinkind. Secure in their Mountain Stronghold, they conduct strange magical experiments to harness the awesome power of lightning.



Faine

Nothing that occurs near their snowcapped peaks escapes High Lord Faine's watchful eye. A skillful mage, the only thing that comes close to matching the power of Faine's brilliance is his relentlessly blind arrogance.

Lightning Elemental

Ferocious and mindless monstrosities wrought from animated metal rods, Lightning Elementals were created during the 'Ritual of Making', one of the many Stormbringer experiments with electricity.



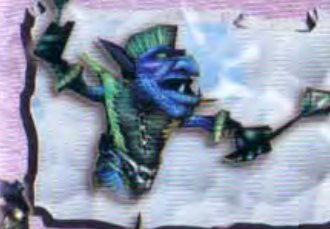
- To **Move**, use the **Left thumbstick**.
- To **Electrocute**, press the **A button**.
- To execute a spinning **Whirlwind** attack, press the **X button**.

Tesla Coil

A metal tower that is crowned by a spherical conductor, the Tesla Coil channels electrical energy and directs it towards any creature within its range that is not tuned to the Stormbringer clan's frequency.




ACOLYTE	MELEE UNIT
Combat	Average
Toughness	Average
Attack	Blunt
Bonus	% chance to knock back



CONJURER	RANGED UNIT
Combat	Average
Toughness	Average
Attack	Piercing
Bonuses	Armor vs. Blunt % chance to stun



PYRO MAGE	SHORT RANGE UNIT
Combat	Good
Toughness	Average
Attack	Fire
Bonuses	Area damage Excellent vs. Structures



ICE MAGE	RANGED UNIT
Combat	Good
Toughness	Excellent
Attack	Ice
Bonuses	Chance to Freeze Good vs. Stonkruisher



WIND MAGE	SUPPORT UNIT
Combat	None
Toughness	Good
Attack	None
Bonus	Armor bonus to allies

STORMBRINGER

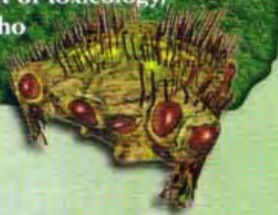
Plaguespitter

Spawned from the green moon Phoust, the 'Tribe' is the wildest of all the clans. At home in the slime of the western marshes, these rugged savages have mastered the art of toxicology, unleashing poisons and acids against all who threaten their homeland.



Syst

The ferocious Clan-chief of the Plaguespitter clan, Syst rules his people with a slime-covered fist. In his brutal world of primal law, only the strong survive, and compared to his clan, all he sees is weakness.



GREEN Slime

Slimes have formed a strange kinship with their savage goblin counterparts. Made up of extremely caustic acid, Slimes can dissolve all manners of organic and non-organic materials in mere moments.

- To **Move**, use the **Left thumbstick**.
- To **Dissolve** units or structures simply move against them.
- When feeding, Slimes will grow in size. When the Slime has grown, press the **X button** to initiate an **Acid Blast** attack in a radius around the Slime.



Hive

Built to house the most aggressive species of poisonous marsh fly, the Plaguespitter clan uses their Hives as a deadly warning to all unwanted visitors that their presence will not be tolerated.



CROPPER

Combat
Toughness
Attack
Bonuses

MELEE UNIT

Average
Good
Slashing
Armor vs. Blunt
% chance to slow



SAVAGE

Combat
Toughness
Attack
Bonuses

SHORT RANGE UNIT

Average
Average
Piercing
Acid
% chance to kill instantly



BILE SPITTER

Combat
Toughness
Attack
Bonuses

MELEE UNIT

Average
Excellent
Corrosion
Acid, Area damage
Good vs. Stormbringer



SHAMAN

Combat
Toughness
Attack
Bonuses

RANGED UNIT

Good
Good
Piercing
Acid, Area damage
% chance to knock back



SPORE FIEND

Combat
Toughness
Attack
Bonuses

SUPPORT UNIT

Average
Excellent
Corrosion
Poison
Weakens enemy armor

Nighthorde

A product of the purple moon Farthis, these ruthless scavengers are the darkest of all the goblins. Making their home in the cursed lands of a long-forgotten battleground, they rob the crypts of the ancient fallen, using whatever they find to benefit their clan.



Nexus

The Master of the Nighthorde clan takes a hands-on approach to his rule. Consequently, there is nothing that Naxus enjoys more than wiling away the hours beside his kinsmen knee-deep in corpses.

Battle Ball

The prize possession of the Nighthorde clan, the explosive Battle Ball is a metallic sphere that has been fitted with razor-sharp spikes that they gleefully put to use preparing burial grounds for exhumation.

- To **Move**, use the **Left thumbstick**.
- To **Attack**, ram an enemy unit or structure.
- To **Jump**, press the **A button**.
 - To **Detonate**, press the **X button**.



Soul Vortex

An unchecked opening directly to the netherworld, the Soul Vortex has the ability to extract the very spirit from those who wander too close to its unholy depths.



SCROUNGER	MELEE UNIT
Combat	Good
Toughness	Good
Attack	Soul
Bonuses	Good vs. Hellfire % chance to loot corpses



REAPER	RANGED UNIT
Combat	Average
Toughness	Average
Attack	Piercing
Bonuses	Triple Shot % chance to knock back



CANNIBAL	MELEE UNIT
Combat	Excellent
Toughness	Excellent
Attack	Slashing
Bonuses	% chance to regain health % chance to kill instantly



GRAVE ROBBER	MELEE UNIT
Combat	Excellent
Toughness	Excellent
Attack	Blunt
Bonuses	Good vs. Hellfire Extra damage vs. Structures



WITCH DOCTOR	SUPPORT UNIT
Combat	Poor
Toughness	Excellent
Attack	Soul
Bonus	% chance to steal souls

Credits

GAME DESIGN BY

Jaleco Entertainment
The Goblin Commander Team

Producer
Chris Millar

PROGRAMMING TEAM

Lead Programmer/CTO
Ken Klopp

Programmers
Curtis Coalson
Chris Coster
Jeff Cotton
Craig Ewert
Branimir Karadzic
Mike "Tweak" Mayers

Additional Programming
Graeme Anderson, Shane Hilton

Goblins Powered by the Truth Engine

DESIGN TEAM

Lead Designer
Ron Millar

Co-Lead Designer
Daniel Russett

Writer
Chris "Zirp" Zirpoli

Designers
Hal Hanlin
Chris Holtorf
Jason Huck
Bill Mrochek

ART TEAM

Art Lead / Producer
Jeff Litchford

Art Lead
Michael Hines

Technical Director
Paul Forest

Technical Art
James Gu
John Loehrlein
George DeChiara

Environment Lead
Michael Bacon

Environments & Objects

Mike Anaya
Gabe Espino
Layne Gifford
Michael Hines
Dave Manuel
Elvis Perry

Character Lead
Michael Boyle

Character Animators

John Behrns
Jonathan Chao
Keith Ho
Suzanne Labrecque

**Character Texture Lead/
Studio Art Director**
Kirt Lemons

Character Textures

Ben Fator
Lawrence Johnston
Ray Ledeter

Cinematics

Chad Gleason
Weili Huang

Senior Concept Artist
Michael Geiger

Concepts

Adam Adamowicz
Chris Handloser
Douglas Shuler
Jim Stigall

Additional Art by
Dan Valey, Jason Anderson,
Chris Holden

SOUND

Audio Director
Michael Smith

Audio Engineers
Eric Harms
Chris Sakana

Music Score/Sound Design
Chad Mossholder
Steve Pabst

Audio Powered by Sonica

Credits

CASTING AND DIRECTOR FOR NARRATOR

Lani Minella for Audiogodz

Narrator
Kai Vilmhelmsen

Goblin Voices
Mike Geiger, Eric Harms, Chris Holtorf,
Lawrence Johnston, Dave Manuel,
Dan Russett, Michael Smith, Chris Zirpoli

Original Concept
Paul Meegan, Ken Klopp

Additional Design
David "Oz" Osborne

PUBLISHER

**JALECO ENTERTAINMENT –
UNITED STATES**

President
Dick Whuk

Executive Vice President
Michael Lomas

Studio Director
Paul Meegan

National Sales Director
Gregg Gellman

Director of Marketing
Deborah Grauer Moran

Public Relations Manager
Jill Storms

Operations Manager
Ted Sajdak

Product Marketing Specialist
Teri Osborne

Internet Design Manager
Chuck Bush

Credit Manager
Sheryl Maher

Publishing Assistant
Jennifer Ochs

QUALITY ASSURANCE

Manager
Robb Flynn

Senior Lead
Jeff Mrochek

Lead
Chris Floyd

Senior Testers
Matt Kuenning
Steve Caywood

Testers

Chris Beard, Srilatha Bharathan,
Rick Blodgett, Brandon Cullis, William Deets,
Darin Felckowski, Kevin Fowler,
Chris Freeman, Zack Frodenberg,
Neal Gamache, Greg Garman, Sam Jacir,
Chris Kaminski, Tom McIntyre,
Michael Stamps

ADMINISTRATION

Director of Finance and Operations
Michelle Wolf

Operations Manager
Greg Ekrem

Human Resources Manager
Jill McCormick

Information Services Manager
George L. Craft

IS Staff
Les Barstow
Jody Gates

Paralegal/Contract Administrator
Susan Cullinan

Accounting Generalist
Joanne Gaskill

Facilities Coordinator
John Candler

**JALECO ENTERTAINMENT –
UNITED KINGDOM**

General Manager
Andrew Chorzelski

**Company Secretary & General Manager –
Finance**
Adrian Beatty