

THE GODDESS OF MUSIC –
THE MUSIC OF YOUR GAME!



WITHIN TEMPTATION

STEP INTO ANOTHER WORLD –
DELIGHTFUL, EXCITING AND MYSTERIOUS!

START YOUR MYSTICAL JOURNEY ON:

WWW.WITHIN-TEMPTATION.COM



SUPERSONIC
THE ALBUM:

MOTHER EARTH 82876 81935 2

WWW.GUN-SUPERSONIC.DE

EmuMovies

PRINTED IN GERMANY

TDK RECORDING MEDIA EUROPE S. A. • Halskestrasse 38 • 40880 Ratingen / Germany

KNIGHTS OF THE TEMPLE

INFERNAL CRUSADE



INSTRUCTION BOOKLET

TDK



NINTENDO
GAMECUBE

11440105091



THIS SEAL IS YOUR ASSURANCE THAT NINTENDO HAS APPROVED THE QUALITY OF THIS PRODUCT. ALWAYS LOOK FOR THIS SEAL WHEN BUYING GAMES AND ACCESSORIES TO ENSURE COMPLETE COMPATIBILITY WITH YOUR NINTENDO SYSTEM.



1 Player

THIS GAME SUPPORTS GAME PLAY USING ONE PLAYER AND CONTROLLER.



Memory Card
Uses 14 Blocks

THIS GAME REQUIRES A MEMORY CARD FOR SAVING GAME PROGRESS, SETTINGS OR STATISTICS.

CONTROLLER NEUTRAL POSITION RESET

If the L or R Buttons are pressed or the Control Stick or C Stick are moved out of neutral position when the power is turned on, those positions will be set as the neutral position, causing incorrect game control during game play.

To reset the controller, release all buttons and sticks to allow them to return to the correct neutral position, then hold down the X, Y and START/PAUSE Buttons simultaneously for 3 seconds.



LICENSED BY



NINTENDO, NINTENDO GAMECUBE, THE NINTENDO GAMECUBE LOGO AND THE SEAL OF QUALITY ICON ARE TRADEMARKS OF NINTENDO. ALL RIGHTS RESERVED.

KNIGHTS OF THE TEMPLE

INFERNAL CRUSADE

Table of Contents

SETTING UP & LOADING	4	FIGHTING	
THE STORY	4	BASIC ATTACKS	12
THE CHARACTERS		COMBO ATTACKS	12
PAUL	5	BLOCK	12
ADELLE	5	BOW MODE	12
THE LORD BISHOP	6	SPECIAL SKILLS	
BASIC CONTROLS	7	DIVINE POWERS	13
THE GAME INTERFACE	8	SPECIAL ATTACKS	13
MAIN MENU		PICK-UPS	13
NEW GAME	9	HEALTH POTIONS	15
LOAD GAME	9	WEAPONS	
OPTIONS	10	SWORDS	14
EXTRAS	10	MACES	14
CREDITS	10	AXES	14
IN GAME MENU	10	BOWS	14
GAME STATUS MENU	11	CREDITS	15
		GARANTY	17
		PRODUCT SUPPORT/TIPS	18

SETTING UP & LOADING

1. Make sure the POWER Button is OFF on your NINTENDO GAMECUBE.
2. Insert your „Knights of the Temple” NINTENDO GAMECUBE Game Disc as described in the instruction manual.
3. Insert the NINTENDO GAMECUBE Controller into the Controller Socket.
4. If you wish to save a game, insert a NINTENDO GAMECUBE Memory Card into Memory Card Slot A or B.
5. Press the POWER Button ON (important: make sure not to touch the Control Stick while doing so).

Please refer to the NINTENDO GAMECUBE instruction booklet for directions on how to format and erase Memory Card files.

THE STORY

An evil Bishop has abducted Adelle, a mysterious young woman with divine powers. With his entourage of disciples and their captive Adelle he embarks on an Unholy Crusade, moving along the initial routes of the historic crusades. By misusing Adelle's powers against her will he plans to complete the Unholy Circle and to perform dark rituals at sacred places to desecrate them. This way he intends to eventually unlock and gain access to the Gateway to Hell.

Paul, a young, newly initiated Templar Knight finds upon him the tough task of starting a mission to uncover the Evil Conspiracy, to interrupt the Unholy Circle and to prevent the Evil Bishop from fulfilling his plan. Only by saving Adelle can he save the world from Evil.

THE CHARACTERS

I. Paul

He is a young and noble man and since childhood he has dreamt of following his father, a former Templar Grandmaster, by joining the Templar Knights. He has dedicated his whole life to mastering the skills required to improve his chances of being accepted for the great challenge that all young men willing to join the Templars need to undertake. As his father made the biggest sacrifice possible on the battlefields in the holy land, he never got to know him, but ever since he learnt to speak he has tried to find out more about his life. He used to walk miles and miles just to catch a glimpse of the Templars passing by. And from there on he knew what his fate would hold. At a very early age he was already a skilled sword fighter and nowadays he is unquestionably ready for the initiation rite of the Knights of the Temple.



II. Adelle

When Adelle was an infant strange things were known to occur near her home. Passers-by would be affected by a hidden power and often the sick would experience unexpected and inexplicable healings. Many people assumed that Adelle was the cause of these happenings and eventually people recognised that there were signs that God was smiling upon her and that she was undoubtedly a chosen one. She was always blessed with compassion and holy love. As she grew up Adelle developed what can only be described as the power to affect things around her and that made her deeply religious. She has wisdom beyond her years and often she went to church to study with the priests. As the village in which she grew up was small and people were always tight-lipped towards strangers it was possible to keep her secret until now.



III. The Lord Bishop

He was once a travelling priest taking care of the poor and innocent until around 30 years ago, along with his fellow brothers, he founded the monastery of Belmont. As he was the most pure and wisest servant of God he was chosen to be the Lord Bishop. Under his command the monastery of Belmont became the centre of the spiritual life of the whole region and the fellow monks lead studies of the holy scrolls. The bishop had always been a kind and helpful man, every wanderer or beggar who passed by was given food and a warm place for the night. He lived for his beliefs and led a God fearing and modest life. But one day, seemingly without reason, his behaviour changed and he became increasingly silent and withdrawn.

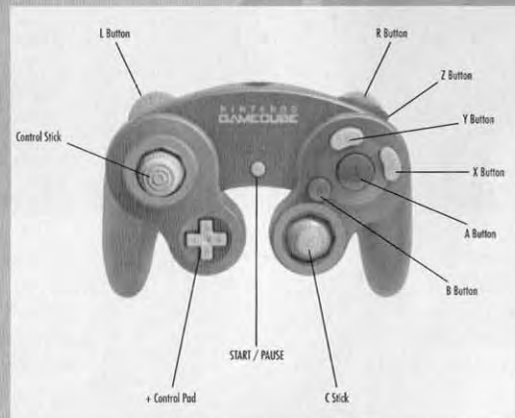


There were rumours that a stranger, never seen before in this area, had visited the monastery to study the way of life there. And there were even rumours that perhaps the Lord Bishop had died. However, people claim to have seen someone looking like him creeping around the streets of Belmont in dark nights.



BASIC CONTROLS

- Control Stick Movement of Player Character / Target toggling / Bow Aim
- C Stick Movement of Camera
- L Button Switch to Special Attack Mode
- R Button Switch to Divine Powers Mode
- + Control Pad Change weapon and entering/leaving Bow Mode:
 - Up: Select Sword
 - Down: Select Bow
 - Left: Select Axe
 - Right: Select Mace
- A Button Regular Attack / Shoot / Special Attack / Divine Power
- B Button Heavy Attack / Special Attack / Divine Power
- X Button Block / Special Attack / Divine Power
- Y Button Special Attack / Divine Power / Confirm Dialogues
- START/PAUSE Start the game / Invoke the Pause Menu
- Z Button Invoke the Game Status Menu

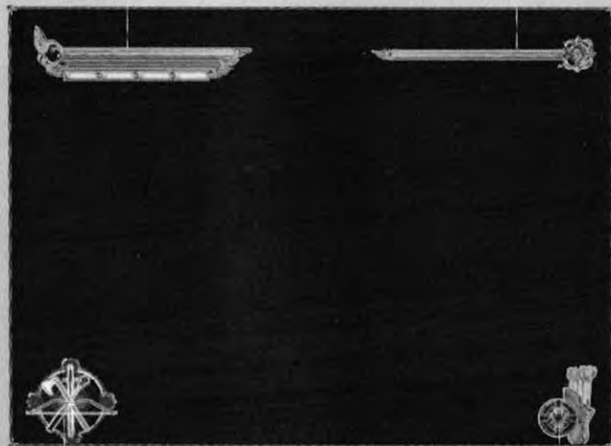


THE GAME INTERFACE

During gameplay the on-screen interface displays information on the current status of the player and the enemies.

The red bar is indicating the player's health. The blue bar is telling the stamina status. The lowest one is the Mana bar, that is divided into four smaller bars, that the player uses to unleash his Divine Powers

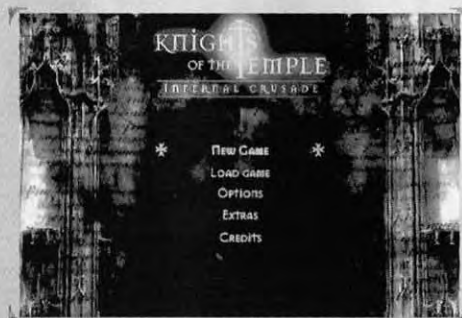
The red bar is showing the health status of the enemy currently targeted



Shows three different icons depending on the situation. That can be weapons, divine powers or special attacks

Shows the number of arrows available while in Bow Mode and arrows picked up during the game

MAIN MENU



In the main menu you can either choose to start a new game, load a game, change options, view extras or watch the credit list.

NEW GAME

When you choose new game, the first thing you will be asked is to create a profile by writing your name.



The next step is to choose difficulty level, and then the game will start!



LOAD GAME

You can load a previous game by choosing this option.

OPTIONS



In the options menu you can change sound and music levels as well as toggling the vibration mode on or off. You can also set the display to Normal or Anamorphic format.

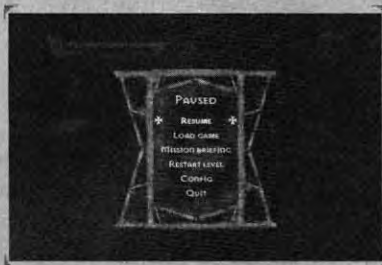
EXTRAS

In this menu you will be able to play back all movies that you unlock during your progress.

CREDITS

The credits list shows everybody that has been involved in the process making this game.

IN GAME MENU



If you press START/PAUSE while playing the in game menu will appear.

You can choose one of the following options:

Resume – Go back to game

Load Game – Load a previous game

Mission Briefing – Get a short description of the current objective

Restart Level – Start the current level from the beginning

Config – See the controller settings

Quit – Will quit the game to the Main menu

GAME STATUS MENU

The Game Status Menu can be accessed by pressing the Z Button to provide information on Paul's current status. You can see which Divine Powers he has acquired and which Special Attacks and Combos can be performed.

You can also use this menu to check how Special Attacks, Divine Powers and Combo Attacks are performed.



LOADING AND SAVING GAMES

The game is automatically saved when the player finishes a level.

The saved level will then appear in the Load Menu. This provides you with the possibility to replay any level in the game at any point.

The current game can also be saved at specific Checkpoints, which you can find within the levels.

CHECKPOINTS

When Paul reaches a Checkpoint you can save the game by pressing the Y Button. When resuming playing the saved game Paul will continue from the Checkpoint.

Y Button Save at Checkpoint



FIGHTING

Basic Attacks

There are two buttons for basic attacks:

A Button . . . Regular Attack

B Button . . . Heavy Attack. This attack is slower but inflicts more damage to the opponent.

By pressing any of the attack buttons a target marker will automatically be set if you are close enough to an enemy. A ring around his feet indicates your current target and when performing attacks your character will always try to strike at your currently selected target. Targets can be changed by moving your character into the direction of the enemy that you wish to attack.

Combo Attacks

In addition to the Basic Attacks, Paul can perform Combo Attacks. All Combo Attacks are initiated with a double tap on the A Button.

2 x A Button + B Button . . . Underhand Swing

2 x A Button + A Button . . . Backhand Swing

2 x A Button + 2 x B Button . . . Windmill

2 x A Button + A Button, B Button . . . Dual Stab and Swing

2 x A Button + B Button, A Button . . . Dual Swing

2 x A Button + 2 x A Button . . . Fast Stab

Block

When you encounter tough opponents you will need to defend yourself by Blocking. There is one block move that Paul can perform:

X Button . . . Holding the X Button will block all incoming attacks but then you won't be able to move.

Bow Mode

If Paul has acquired a bow he is able enter Bow Mode.

To enter Bow Mode select the bow by pressing the + Control Pad Up. You will now enter a 1st person view of Paul's surroundings.

Use the Control Stick to aim and, if you have any arrows left, the A Button to fire:

A Button . . . Shoot

Control Stick . . . Aim

SPECIAL SKILLS



Divine Powers

Divine Powers are given to Paul throughout the game.

If Paul has collected enough Mana by defeating his enemies, he can unleash the Divine Powers he has been given. Those powers are special skills that help Paul to accomplish his mission.

To unleash a Power hold the R Button to enter the Divine Power Mode and press the corresponding button.

R Button + B Button . . . Salutaris - Divine Healing

R Button + X Button . . . Armaorum - Divine Aura

R Button + A Button . . . Saxificus - Divine Shockwave

R Button + Y Button . . . Percutio - Divine Bolts



Special Attacks

If Paul has enough Stamina you can use Special Attacks. Those attacks cause more damage to the enemies so it is generally a good idea to use them whenever you can.

Paul earns Special Attacks throughout the game.

To perform a Special Attack hold the L Button to enter the Special Attack Mode and press one of the four Special Attack buttons:

L Button + A Button . . . Block Breaker Sweep Attack

L Button + X Button . . . 360 Sweep Attack

L Button + Y Button . . . Windmill Death from Above

L Button + B Button . . . Jumping Chop Attack

Pick-ups

Throughout the game Paul finds useful objects like health-potions, weapons or key items.

Enemies can drop some of these objects but Paul is also able to find them in the environment he explores.

Sometimes, things in the environment contain pick-ups so search closely and don't be afraid to smash things.



Health Potions

By picking up a health potion Paul increases his health.

WEAPONS



Paul can handle four different weapon types. At the beginning of the quest Paul carries a sword but as his journey continues he finds new and more powerful weapons. As soon as he picks up a new weapon the current one of the same kind will be dropped. Paul just keeps the better one.

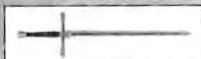
To select a new weapon use the + Control Pad..

Up Sword

Down. Bow

Left Axe

Right Mace



I. Swords

There are 14 swords that Paul can acquire throughout the game.



II. Maces

Maces have a shorter range than swords but generally inflict more damage. There are 4 maces that Paul can acquire throughout the game.



III. Axes

Axes also have a shorter range than swords but they generally inflict more damage and are sharper than maces. There are 7 axes that Paul can acquire throughout the game.



IV. Bows

Bows are the only long range weapons that Paul can use. They are useful for shooting enemies from great distances. There are 3 different bows that Paul can acquire throughout the game.

CREDITS

**KNIGHTS OF THE TEMPLE IS A PRODUCTION OF
STARBREEZE STUDIOS
AND
TDK RECORDING MEDIA EUROPE S.A.**

MANAGEMENT - DEVELOPMENT STARBREEZE

Hans Andersson Producer
Daniel Willfor Associate Producer

TDK

Heiko tom Felde Director
Christopher Schmitz Producer
Norbert Wellmeyer Associate Producer

DESIGN

Mikael Lindgren Lead Designer
Nick Kyriakidis Creative Advisor
Mikael Säker Script Writer

LEVEL DESIGN

Erik Sjöväld Lead Level Designer And Scripter
Emil Gustavsson Senior Level Designer
Daniel Ignell Level Designer And Camera Scripter
Christian Plogfors Level Designer And AI Scripter
Magnus Andersson Level Designer
Magnus Runesson Game Play Scripter
Jens Olsson AI Scripter
Per Gullarp Texture Artist
Fredrik Jansson Camera Scripter And Texture Artist
Per Edman Camera Scripter

CHARACTERS AND OBJECTS DESIGN

Nicholas Siren Lead Character And Object Designer
Måns Bagge Character Designer
Theo Savidis Object Designer
Carl-Mikael Lagnecrantz Object Designer

PROGRAMMING

Fredrik Larsson Lead Programmer
Samuel Ranta-Eskola Assistant Lead Programmer
David Mondelore Game Play, Animation And
. F/X Programmer
Daniel Wiksten Game Play And
. Animation Programmer
Anders Olsson AI Programmer
Thomas Ablad Game Programmer
David Lundholm Additional AI Programmer
Anders Backman Additional AI Programmer
Stefan Sandberg Additional F/X Programmer

Anton Ragnarsson Lead Game Cube Programmer
Magnus Högdahl Engine Programmer
Erik Olofsson Engine Programmer
Jesse Andersson Engine Programmer
Henrik Meijer Additional Engine Programmer
Martin Gustafsson Additional Engine Programmer
Jim Kjellin Additional Engine Programmer
Stefan Sandberg Additional Engine Programmer

SOUND, MUSIC AND LOCALIZATION

Johan Althoff Sound-Designer, Localization
. Manager And Assistant-Composer
Gustaf Grefberg Composer, Sound-Designer And
. Assistant Localization Manager
Ronny Ahlgren Assistant Sound Designer
. And Assistant Composer
Thomas Böcker Musical Advisor

Felicity Waiton Voice Talent
Lawrence Mackrory Voice Talent
David Wessman Voice Talent

Kimberly Grefberg Documentation Editor

ANIMATION / MOTION CAPTURE / ARTWORK

Starbreeze
John Klepper Animation Studio Manager /
. Mocap Supervisor
Daven Coburn Lead Animator
Eckhardt Milz Animation Director
Patrik Zayas Production Manager
Mattias Lindkvist Animator
Peter Saumur Animator
Benny Edlund Animator
Johan Fröjd Animator
Henrik Håkansson Lead Cinematic Artist / Animator
Daniel Eriksson Cinematic Artist / Animator
Markus Söderqvist Cinematic Artist / Animator
Christian Sjöström Cinematic Artist / Composer
Dejan Momcilovic Cinematic Technical Director / Mocap
Solver
Sigtor Klidal Mocap Operator / Mocap Tracker
Jens Larsson Post Production
John Wallin 2D Artist
David Russell Conceptual Designs / Storyboards

ILLUVISION

Tom Thiel Backdrop Paintings
Ricarda Thiel Backdrops Painting

MARKETING

Andreas Eugen Kähler Manager Marketing
Neil Berry Product Manager

OPERATIONS TDK

Malcom Choat Manager Controlling
Marie-Paule Van der Veken Manager Operations

PUBLIC RELATIONS TDK

Michael Domke PR Manager UK / Germany
Adrian Lacy PR Manager UK
Virginie Bousquet . PR Manager France / Italy / Spain
Katrin Jungmann PR Manager Benelux /
Nordic Territories
Beatrice Schneider. PR Manager DVD

MOTION CAPTURE TALENT / COMBAT AND STUNTS

Leraldo Anzaldúa Fight Director /
Motion Capture Talent
Brian Byrnes Fight Director /
Motion Capture Talent
Henry Layton Motion Capture Talent
Michael Roberts Motion Capture Talent
Mattias Lindkvist Motion Capture Talent
Johanna Lazcano Motion Capture Talent
Fredrik Hellberg Motion Capture Talent
Jörgen Sahlin Motion Capture Talent
Maria Parfelt Motion Capture Talent
Kristina Bornholm Motion Capture Talent
Rasha El-Ahmad Motion Capture Talent

WEIRDOZ LOCALIZATION AGENCY

Sven Flügge Localization Manager
Martin Ruiz Torreblanca Artistic Director

Steve Hudson Voice Talent
Tom Zahner Voice Talent
Ian Halcrow Voice Talent
Ellen Wagner Voice Talent

Norman Matt Voice Talent
Karin Buchali Voice Talent
Birgit Karla Krause Voice Talent
Heinz Ostermann Voice Talent
Rolf Berg Voice Talent
Voice Talent
H.G. Kilbinger Voice Talent
Volker Rolf Voice Talent
Vito Alfieri Voice Talent
Markus Pfeiffer Voice Talent
Hans Bayer Voice Talent
Peter Harting Voice Talent
Rene Baarken Voice Talent

Manual
Mikael Säker Manual
Mikael Lindgren Manual
Theo Savidis Manual
Kimberly Grefberg Manual

QUALITY ASSURANCE

STARBREEZE

Robert Widing Lead Tester
Peter Kullgard Tester
Theo Savidis Tester
Claudio Arcos Lead Cook

POLYEYE

Oliver Blanck QA Manager
Tilo Boos Lead Tester
Jens Beyer Tester

DIVISION ZERO MEDIA GMBH

Guido Präss QA Manager
Björn Baranski Lead Tester

MEDIA CREATION

doXupport, Jörgen Schlegel

ADDITIONAL CONTRIBUTORS

Svante Lindholm
Magnus Nedfors
Hannes Rhodin
Jonas Thörnkvist
Jonni Tettinen

WARRANTY INFORMATION

In the unlikely event of a problem with your Product , you may only need simple instructions to correct the problem. Please contact TDK on the web before returning the Product to a retailer.

If a TDK service technician is unable to solve the problem on the web via e-mail, he will authorize you to return the Product, at your risk of damage, freight and insurance prepaid by you, together with your dated sales slip or similar proof-of-purchase within the ninety (90) day warranty period to:

TDK Recording Media Europe S.A., Halskestr. 38, 40880 Ratingen, Germany

TDK is not responsible for unauthorized returns of Product and reserves the right to send such unauthorized returns back to customers.

COPYRIGHT

© 2003 TDK Recording Media Europe S.A. All rights reserved.

All elements of this product have been copyrighted. All elements not originally created by TDK Recording Media Europe S.A. (hereinafter referred to as TDK) are licensed by the respective licensors. Please refer to the insert and package for specific attributions, legal notices, and restrictions. This manual and all contents described within it are copyrighted. All Rights Reserved.

Under Council Directive 1991/250/EEC of 14 May 1991 on the legal protection of computer programs and any subsequent amendment, as well as under existing national copyright laws, this product and associated package components (whether complete or only a portion thereof) cannot be copied without prior written consent of TDK. The same property and copyright notices must be affixed to any permitted copies as were affixed to the original. This exception does not allow copies to be made for others, whether or not sold. Under Council Directive 1991/250/EEC, copying includes translating into another language or format. Using the audio segments in any multimedia presentation intended for audiences may obligate you to pay a small fee per person in accordance to performer's rights organizations.

LICENSE AGREEMENT

This is a license agreement between you (either an individual or an entity) the end user, and TDK. TDK hereby grants to you, the owner of this product, a non-exclusive license agreement to use the enclosed software, subject to the terms and restrictions set forth in this non-exclusive agreement. If you do not agree to these terms as set forth herein, you must return the unused product to the manufacturer.

LIMITED WARRANTY

TDK warrants that this product will perform substantially in accordance with the accompanying written materials for a period of ninety (90) days from the date of receipt. Any implied warranties on the product are limited to ninety (90) days. Some states/jurisdictions do not allow limitations on the duration of an implied warranty, so the above limitation may not apply to you.

CUSTOMER REMEDIES

TDK's entire liability and your exclusive remedy shall be, at TDK's option, either a return/refund of the price paid or repair or replacement of the product that does not meet TDK's limited warranty and that is returned to TDK with a copy of your receipt, evidencing the date of purchase. In no event shall TDK's liability with respect to this limited warranty exceed the cost of replacement of the media on which the product is recorded. Notwithstanding the terms of this paragraph, nothing contained in this Agreement shall affect TDK liability under the European Product Liability Directive (European Directive 85/374/EEC, 25 July 1985) and the relevant legislation of the member States for death, personal injury or destruction of any item of property (Product itself excluded). This limited warranty is void if failure of the product has resulted from accident, abuse, or misapplications. Any replacement of the product will be warranted for the remainder of the original warranty period or thirty (30) days, whichever is longer.

NO OTHER WARRANTIES

TDK disclaims all other warranties, either expressed or implied, of merchantability and fitness for a particular purpose, with respect to the product and the accompanying written materials. TDK does not warrant that the enclosed product or documentation is without defect or error or the operation of the enclosed product will be uninterrupted.

In no event shall TDK or its suppliers be liable for any damages whatsoever (including, without limitation, damages for loss of business profits, business interruption, loss of business information, or other pecuniary loss) arising out of the use or inability to use this TDK product, even if TDK had been advised of the possibility of such damages. Because some States/ jurisdictions do not allow limitations on duration of an implied warranty, the above information may not apply to you. The warranty and remedies set forth herein are exclusive and in lieu of all others, oral or written, expressed or implied. No dealer of TDK product, nor distributor, TDK agent or employee is authorized to make any modifications or additions to this warranty. This warranty shall not be applicable to the extent that any provision of this warranty is prohibited by any EU, State, or municipal law that cannot be pre-empted.

PRODUCT SUPPORT/TIPS

The TDK Recording Media Europe S.A. Product Support Department provides technical support, customer service and game hints. There are several different ways to receive assistance:

Email Support

A representative will promptly and personally answer e-mail inquiries. Requests should be e-mailed to tdkgames@maxupport.co.uk. Please include a detailed description of the situation.

Technical Support

Live representatives are available by telephone Monday through Saturday 10:00am to 7:00pm at +49 1805-TDKGAMES or +49 1805-83 54 26 37 (international call).

Game Hints

Live representatives are available by telephone Monday through Saturday 10:00am to 7:00pm at +49 1805-83 54 45 (international call).

The PEGI age rating system:

Age Rating categories:
Les catégories
de tranche d'âge:



Note: There are some local variations!

Note: Il peut y avoir quelques variations en fonction du pays!

Content Descriptors:

Description du contenu:



For further information about the Pan European Game Information (PEGI) rating system please visit:

Pour de plus amples informations concernant l'évaluation du système d'information de jeu Pan Européen (PEGI), vous pouvez consulter:

Para obtener más información sobre el sistema de calificación de juegos (PEGI), por favor visite:

Per ulteriori informazioni sul sistema europeo di valutazione delle informazioni del gioco (PEGI) vi preghiamo di visitare:

Für weitere Informationen über das europäische Spiel-Informationen Bewertungs-System (PEGI) besuchen Sie bitte:

<http://www.pegi.info>