

SEGA™

™
X
2
3

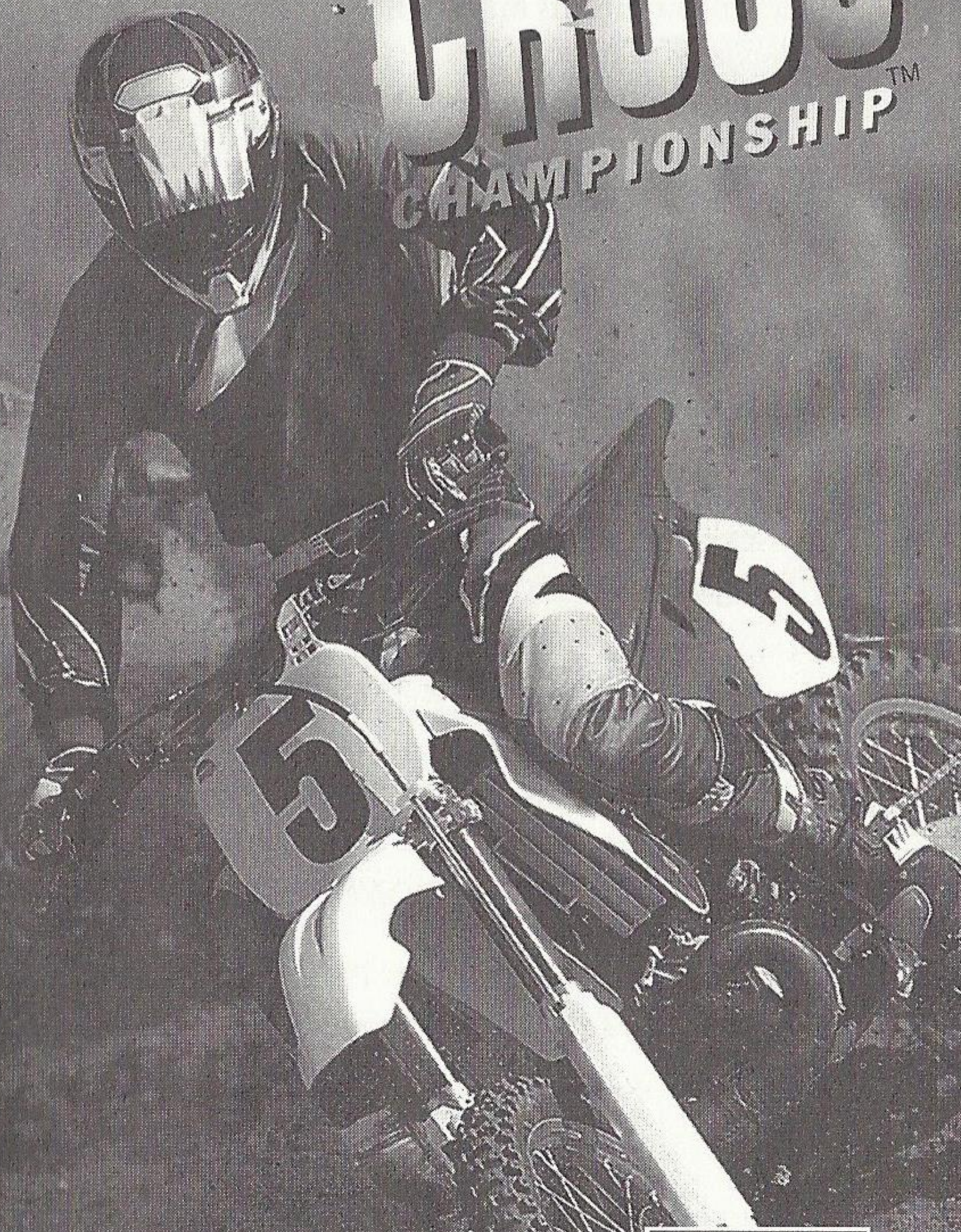
GENESIS

INSTRUCTION MANUAL



MOTO CROSS

CHAMPIONSHIP™



WARNINGS

Read Before Using Your Sega Video Game System

EPILEPSY WARNING

A very small percentage of individuals may experience epileptic seizures when exposed to certain light patterns or flashing lights. Exposure to certain patterns or backgrounds on a television screen or while playing video games may induce an epileptic seizure in these individuals. Certain conditions may induce undetected epileptic symptoms even in persons who have no history of prior seizures or epilepsy. If you, or anyone in your family, has an epileptic condition, consult your physician prior to playing. If you experience any of the following symptoms while playing a video game — dizziness, altered vision, eye or muscle twitches, loss of awareness, disorientation, any involuntary movement or convulsions — IMMEDIATELY discontinue use and consult your physician before resuming play.

WARNING TO OWNERS OF PROJECTION TVS

Still pictures or images may cause permanent picture-tube damage or mark the phosphor of the CRT. Avoid repeated or extended use of video games on large-screen projection televisions.

HANDLING YOUR SEGA CARTRIDGE

- The Sega Genesis cartridge is intended for use exclusively on the Sega Genesis System.
- Do not bend it, crush it or submerge it in liquids.
- Do not leave it in direct sunlight or near a radiator or other source of heat.
- Be sure to take an occasional break during extended play, to rest yourself and the Sega cartridge.

SEGA GAMEPLAY HOTLINE

1-415-591-PLAY

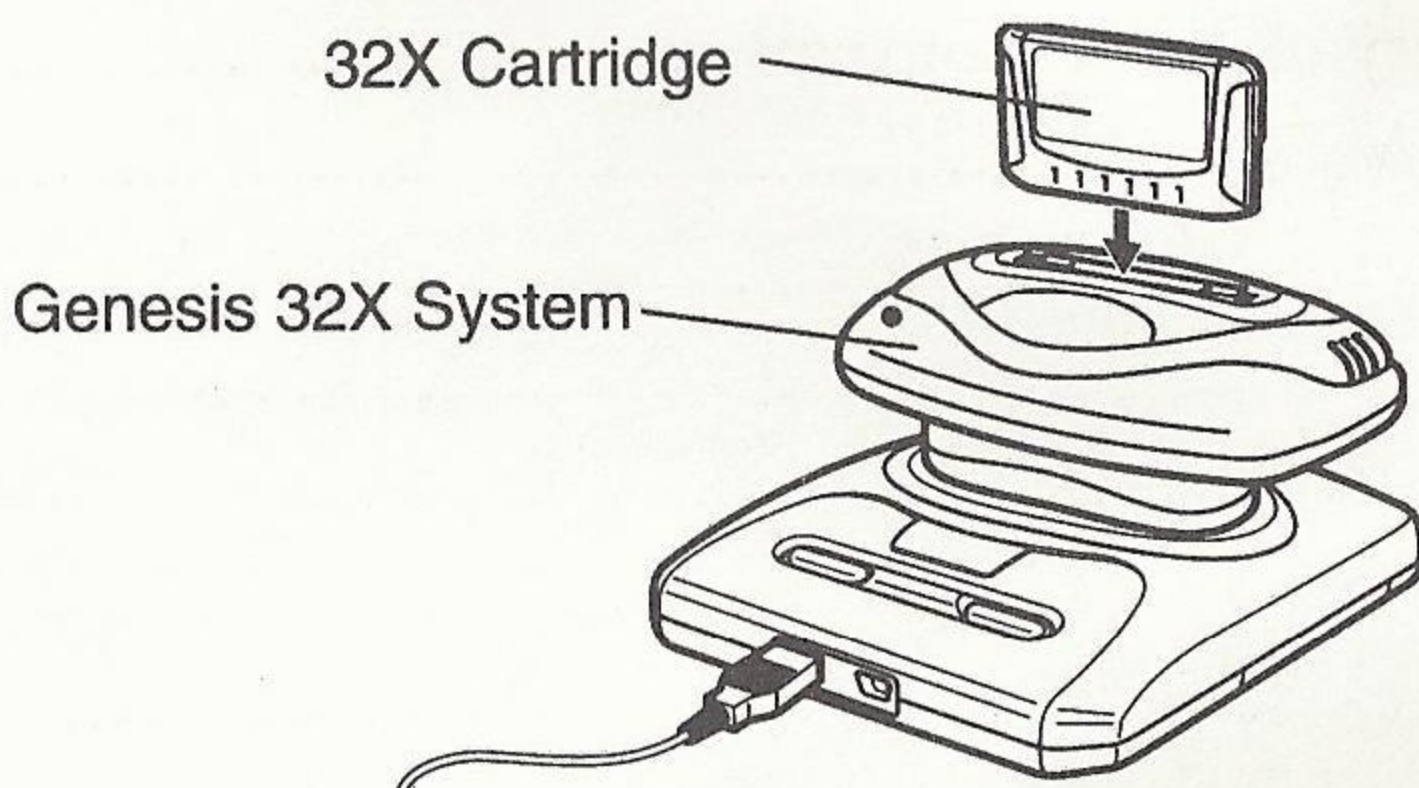
For French instructions, please call:
Instructions en français, téléphoner au:

1-800-872-7342

Table of Contents

Starting Up	2
Motocross Championship	3
Summary of Basic Controls	4
Set-Up Menu	4
Players	5
Level	5
Music	5
Practice Mode	5
Track Selection	6
Bike Selection	6
The Bikes	7
Season Mode	7
Password Entry	8
Season Standings	9
Prize Money	10
The Race	11
Rider Control	11
The Gas	11
The Brake	12
Steering	12
Leaning Forward	12
Pulling Up	12
Punching and Kicking	13
Aerial Acrobatics	13
Wobbling	14
Wiping Out	14
Competitors	14
Terrain	16
Special Moves	17
Credits	19
Limited Warranty	21

STARTING UP



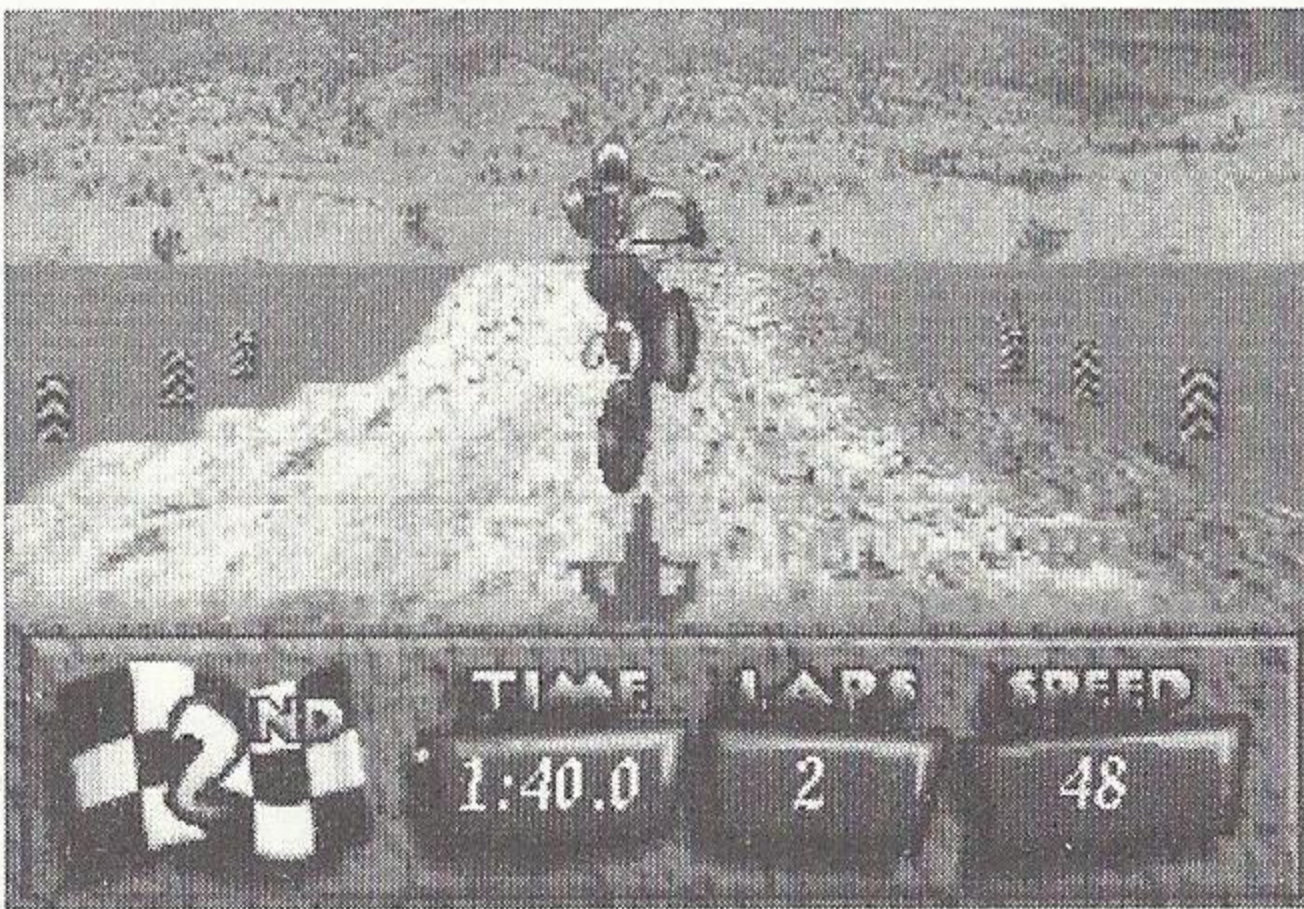
1. Set up the Genesis and 32X system and plug in Control Pad 1. For two player games, plug in Control Pad 2 also.
2. Make sure the power switch is OFF before you insert *Motocross Championship* into the 32X console. Press the cartridge down firmly.
3. Turn the power switch ON and wait for a moment for the Sega introduction screen.
4. Press **Start** when the Title screen appears.

IMPORTANT: If you don't see the Sega screen, turn the power switch OFF. Make sure the Genesis and 32X systems are set up correctly and the cartridge is firmly inserted in the console. If the system is connected to a TV, make sure it's turned to the correct channel (3 or 4). Then turn the power switch ON again.

If your Genesis is connected to a Sega CD unit, make sure the Sega CD power supply is plugged into the wall. If your Genesis is not connected to a Sega CD unit, make sure a terminator is placed on your Genesis.

Always make sure the power is OFF before inserting or removing a Genesis 32X game cartridge.

MOTOCROSS CHAMPIONSHIP



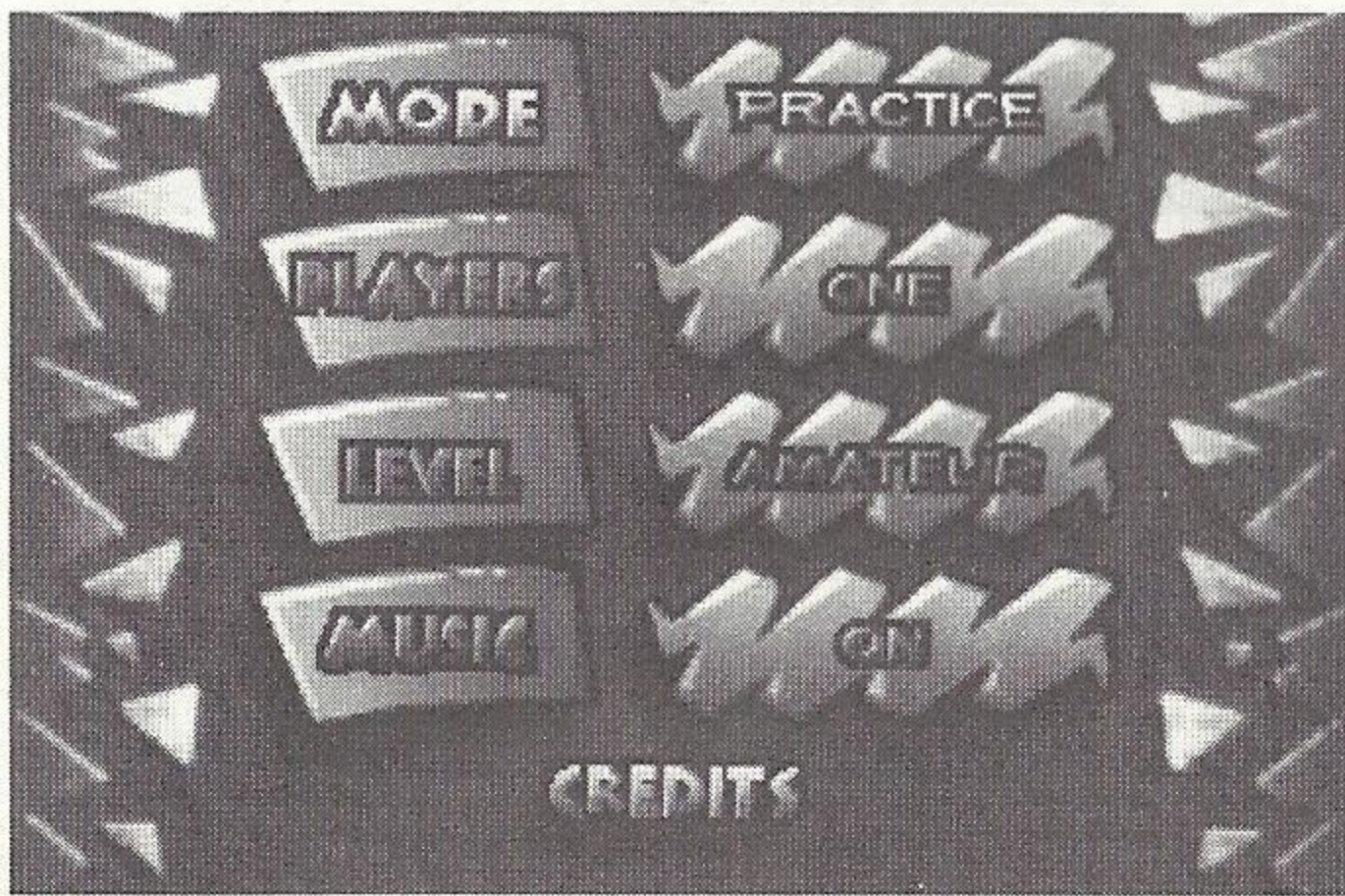
Welcome to Motocross Championship, where you get the chance to ride three awesome motocross dirtbikes on twelve challenging dirt tracks. You'll need steady nerves to powerslide through hairpin turns that lead straight into mountainous jumps or whoop-dee-dooos. All twelve tracks pose their own unique challenges, but one thing remains the same no matter where you're riding: the eleven racers around you don't want you to win and see nothing wrong with punching and kicking you to slow you down or knock you over. It's a nasty world out there on the circuit, so if you hope to win the season championship you better be ready to ride hard and defend yourself with your hands and feet.

SUMMARY OF BASIC CONTROLS

The table below outlines the basic controls for users who wanted to get started right away. There are subtle and important differences in the way the controls work in certain situations in the game. Please see Rider Control (p.11) for an explanation of all the controls.

D-Pad	A Button	B Button	C Button
L/R—Turn Up—Speed Down—Control	Brake	Gas	Punch/Kick

SET-UP MENU



Select from the various options on the Set-up Menu.

- To highlight an option, D-Pad up/down.
- To toggle through the options, D-Pad left/right.
- To begin the game, press Start.

PLAYERS

One or Two players can compete against the field. In Two Player mode the screen is split, with Player One on the right and Player Two on the left. Player One uses controller 1 and Player Two uses controller 2.

LEVEL

There are three different levels: Amateur, Expert, and Pro. The levels define the skill of the computerized racers, the Amateurs being the least skilled competitors, and the Pros the most skilled.

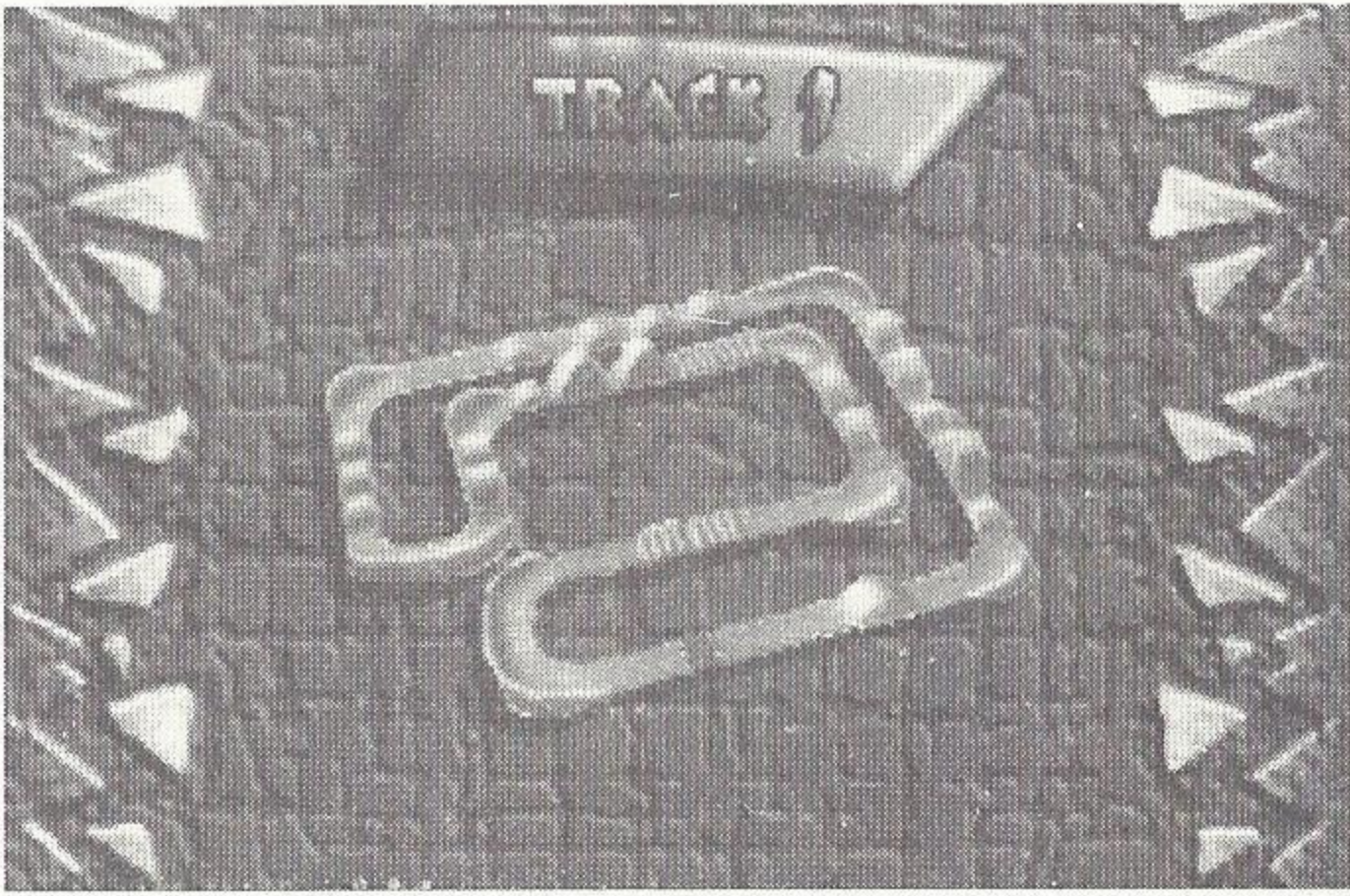
MUSIC

If you prefer to play without music and only track sounds, set Music to Off before you exit the Set-up Menu.

PRACTICE MODE

Practice mode allows you to race any bike on any track. A practice race lasts three laps in Amateur mode, four laps in Expert mode, and five laps in Pro mode. At the end of a the race you'll see the race results and then return to the Set-up Menu.

TRACK SELECTION



Select from one of the 12 unique and exciting tracks.

- To cycle through the tracks, D-Pad left/right/up/down.

BIKE SELECTION

When you exit the Set-up Menu, the Bike Selection screen appears. The bike selected by Player One is chosen for all the racers.



- To cycle through the bikes, D-Pad left/right/up/down.
- To exit the Bike Selection screen, press Start.

THE BIKES

125cc: What it lacks in speed it makes up for in stability.

250cc: A circuit favorite with a good combination of speed and stability.

Super Bike: Only for the strongest riders, incredible speed and sheer size make this bike tough to handle.

SEASON MODE



The Season consists of three rounds on all 12 tracks, with money awarded to the top 10 finishers on each track. The winner of the Season is the player with the most money.

- To begin a New Season, Press Start.

PASSWORD ENTRY

The Password Entry screen requires you to enter your 11-digit password. The password is found on the Track Select screen. Be sure to write down your password if you wish to continue a Season.

- To highlight the password entry line, D-Pad right and press Start
- To select a character, D-Pad up/down.
- To enter the selected character and move to the next character, D-Pad right.
- To return to a previous character, D-Pad left.
- To enter the entire 11-digit password and move to the Season Options screens, press Start.

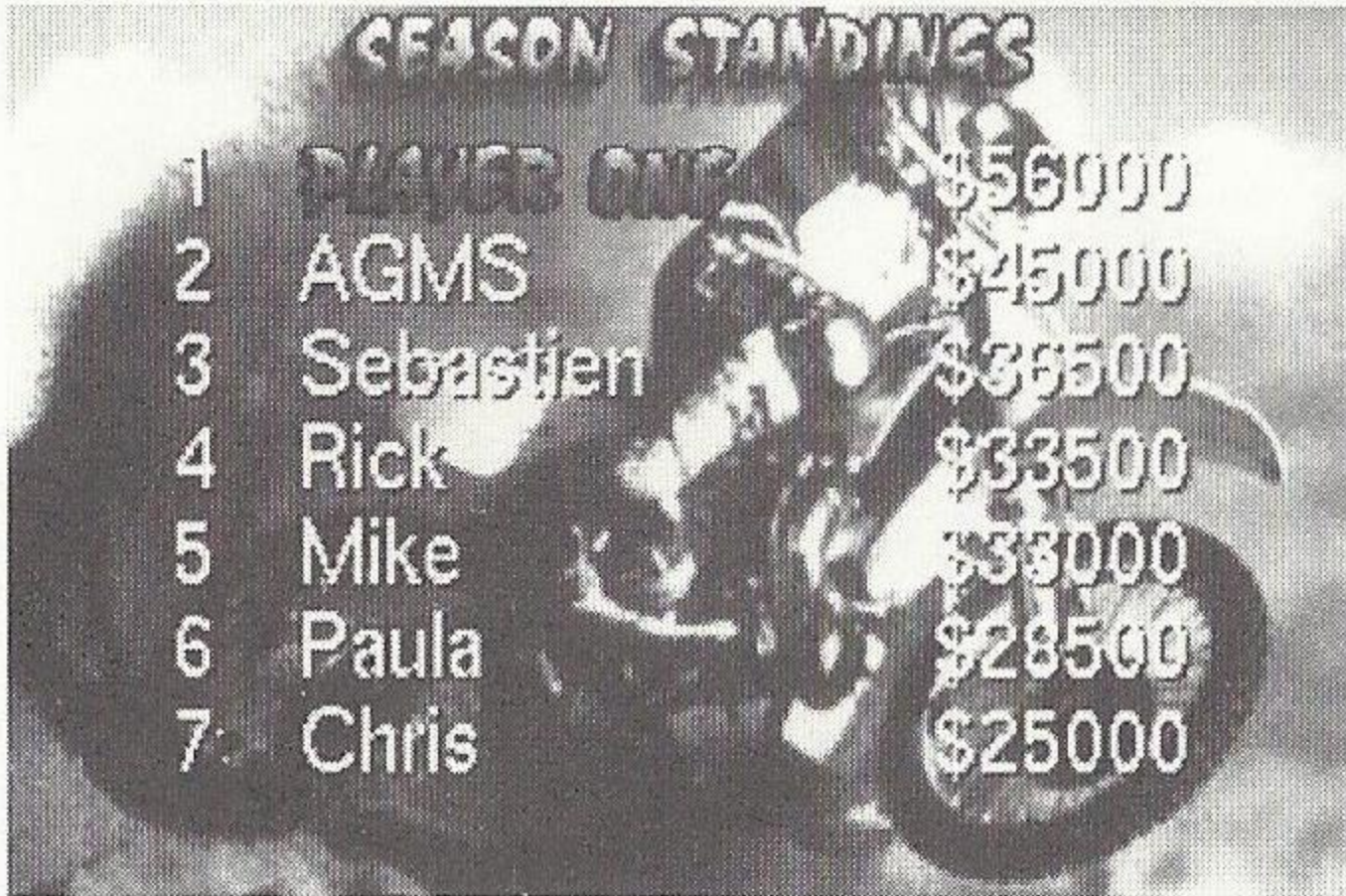
When you begin a Season all the racers start with the 125cc bike on Track 1.



In order to advance to the next track in a One Player Season, you must finish 1st, 2nd, or 3rd.

SEASON STANDINGS

When you place on the 12th track, the Season Standings screen appears.



The screenshot shows a screen titled "SEASON STANDINGS" with a background image of a motorcycle. The screen displays a list of racers and their total money won, ranked from 1st to 7th place.

Rank	Racer Name	Money Won
1	DANCE ONE	\$56000
2	AGMS	\$45000
3	Sebastien	\$36500
4	Rick	\$33500
5	Mike	\$33000
6	Paula	\$28500
7	Chris	\$25000

The Season Standings screen lists racers in order of money won. When you exit the Season Standings screen, the next round begins. In the next round, the racers start with no cash and move up in class, from 125cc to 250cc, or from 250cc to Super Bike. At the end of the Super Bike round, the Season is over.

- To exit the Season Standings screen, press **Start**.

The season lasts for 36 races. If after all 36 races you place among the top three riders in total money won, the Season Winners screen appears. Extra trophies appear on the screen if you raced at the Pro level.

PRIZE MONEY

The object in Season mode is to win as much money as possible while you advance from track to track and from round to round. There are twelve racers in each race, and the top ten finishers are awarded money, so that even if you don't advance, you still can have something to show for your effort.

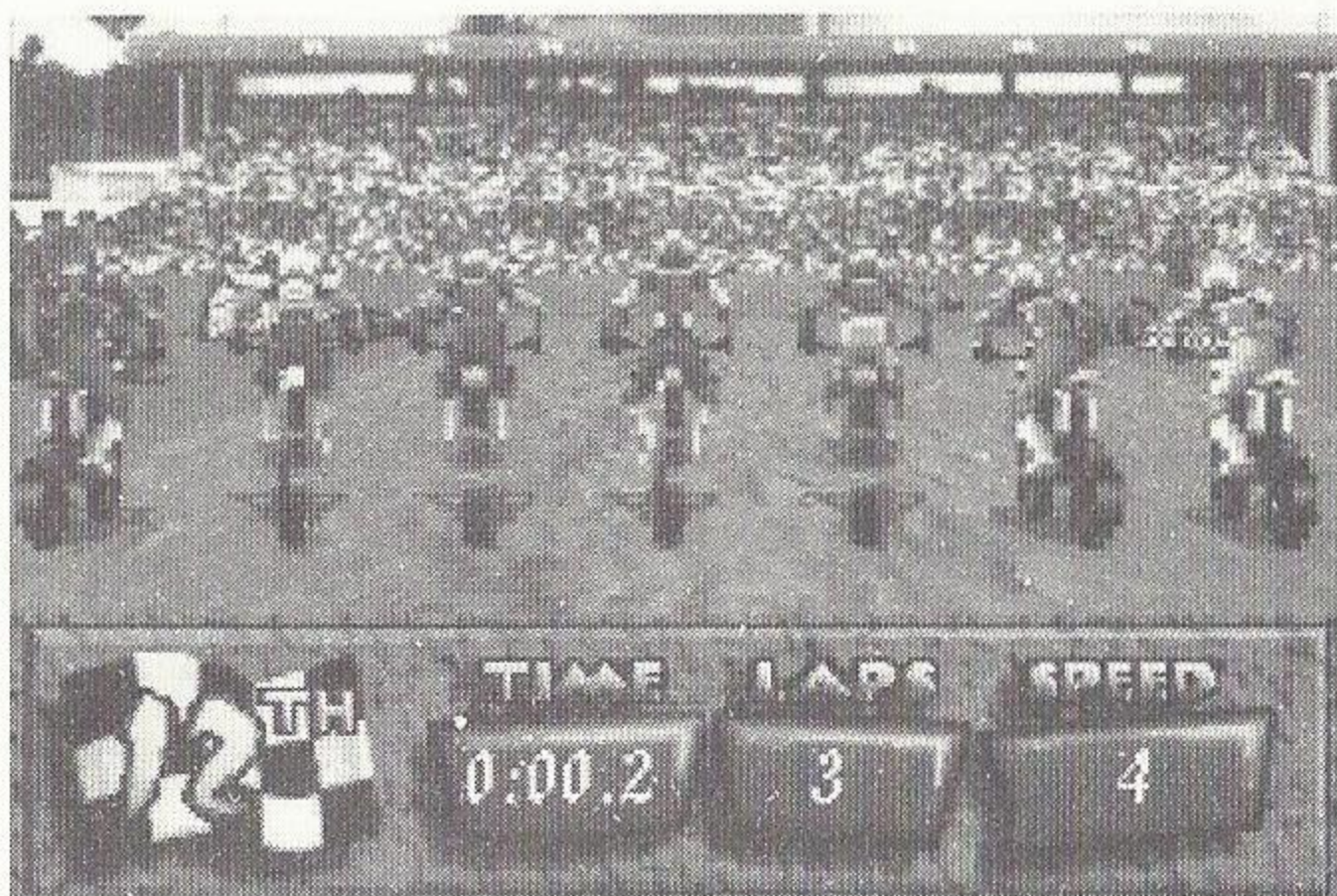


The prize money for each race breaks down as follows.

1st Place	\$5000	6th Place	\$2500
2nd Place	\$4500	7th Place	\$2000
3rd Place	\$4000	8th Place	\$1500
4th Place	\$3500	9th Place	\$1000
5th Place	\$3000	10th Place	\$500

Money earned for non-qualifying finishes does not accumulate. In One Player mode, the least you can win before advancing is \$4000. In Two Player mode, if one of the players qualifies and the other does not, the player who didn't qualify moves on to the next round with the prize money earned for his or her last finish.

THE RACE



The race screen is where all the action takes place. The information at the bottom of the race screen lets you know how you're doing during the race. You'll see your place among the other racers, the number of laps remaining, your time, and your speed.

RIDER CONTROL

You'll need to master the controls if you want to finish ahead of the pack and win a lot of money.

The Gas

You won't go anywhere if you don't turn the throttle.

- To turn the throttle, press and hold B.
- To let go of the throttle, release B.

The Brake

Sometimes you'll need to hit the brake to avoid trouble.

- To hit the brake, press and hold **A**.
- To release the brake, release **A**.

Steering

It's important to stay on the track, where the bike goes fastest.

- To steer the bike, **D-Pad left/right**.

Leaning Forward

When you lean forward over the handlebars, you lower your wind resistance, which increases your speed. When you're landing from a jump, it's usually wise not to lean forward, since that causes your front wheel to land first, which can cause you to wipe out.

- To lean forward, **D-Pad up**.

You can lean forward while you turn by pressing the **D-Pad up/left** or **up/right**.

Pulling Up

Pulling up on the handlebars lifts the front wheel and decreases your speed, but it helps you clear jumps and whoop-dee-doos. Pull up to ride through whoop-dee-doos easily.

- To pull up, **D-Pad down**.

You can pull up while you turn by pressing the D-Pad **down/left** or **down/right**, but it's not a good idea to turn the bike while you're in the air. That can cause a wipe-out.

Punching and Kicking

When you're next to another rider, you can punch him or kick him. It's not very sporting, but it's often effective in breaking free of the competition. A single well-timed kick can knock a rider off his bike, while it takes a couple a good punches to send him down.

- To punch to the right, press **C**.
- To punch to the left, D-Pad **left** and press **C**.
- To kick to the right, D-Pad **down** and press **C**.
- To kick to the left, D-Pad **down/left** and press **C**.

Aerial Acrobatics

When you're in mid-air you can "step off" the peg to excite the crowd and show-up the other riders. You're awarded \$100 for each step off.

The "power salute" is an even more daring mid-air move that earns you \$200 each time you do it.

- To step off, first tap **A** and then hold **A**.
- To power salute, first tap the D-Pad **up** and then hold the D-pad **up**.

WOBBLING

When your bike wobbles you've taken damage and are more vulnerable to a being knocked down with a punch or a kick. If you glance off an object or get hit by another rider, you'll go into a wobble. Try to avoid contact with other riders when you're wobbling. In a few seconds you'll regain your balance and be back to full strength.

WIPING OUT

In *Motocross Championship*, an occasional wipe-out is practically unavoidable. If you hit an object head-on or brush an object at high speed (20 mph or faster) you'll wipe out. When you wipe out, your racer automatically gets back on the bike, but it takes him a few seconds to get settled on the seat and to clear his head. The rider blinks for those few seconds, letting you know that he's temporarily invulnerable to the other riders. This helps you get up to speed and back on track. When the rider stops blinking, he's no longer invulnerable.

COMPETITORS

Each of the computer-controlled competitors possesses certain skills and tendencies. It's wise to take note of particular riders' attributes so you can make adjustments to compensate for those tendencies.

AGGRESSIVENESS

A rider's aggressiveness defines a rider's tendency to interfere with other riders. The more aggressive a rider, the more likely he is to try to take you out when he's near you.

TURNS, JUMPS, WHOOP-DEE-DOOS

A rider's overall riding skills determines how fast he can move through the various types of terrain on the courses. Some riders are slower around turns and faster over whoop-dee-doos. Watch the other riders to see how well they move on the track, and adjust your race strategy accordingly.

GUTS

A rider's guts determines how often he's likely to take chances. For example, a rider without a lot of guts will take a double jump one jump at a time, while a more gutsy rider will fly over both jumps at once, risking the possibility of a crash to keep his speed and advance his position in the race.

REACTIONS

A rider's reactions determine how well he can recover from a near spill or a collision. The better reactions a rider has, the harder he is to knock off his bike.

TERRAIN

Each track has its own terrain features. Each terrain feature requires a different approach for maximum safety and handling. The more you know about the different terrain features, the better you'll be able to prepare for them in the heat and dust of the race.

WHOOOP-DE-DOOS

Whoop-de-dooos are a series of small jumps placed close together. It's a good idea to get a running start as you approach a series of whoop-de-dooos so you can fly over as many as possible. Pulling back on the handlebars is helpful in riding through whoop-dee-dooos.

SINGLE JUMP

A single jump can send you flying high into the air if you take it a high rate of speed. Make sure not to lean forward as you land, or you might bite the dust.

DOUBLE JUMP

Two jumps back to back can cause problems for riders who take the first jump too fast to land before the second jump appears, or not fast enough to clear the second jump. Landing mid-way up the second jump, or directly on top of the second jump, can lead to a crash.

TRIPLE JUMP

Three jumps back to back pose a serious challenge for the rider who wants to ride flat out. It's not always easy to predict where you're going to land, and only the most skilled riders can clear all three jumps.

TABLE TOP JUMP

A table top jump is a ramp that leads to a short plateau that ends in an abrupt down ramp or drop-off.

MUD PUDDLES

Mud puddles slow down the bike and can make it pretty squirrely. If you try to turn while in a mud puddle, you're likely to crash.

SPECIAL MOVES

Certain controlled special moves affect other riders. Part part of racing strategy is to cause problems for your competitors, and the better you can do that the better chance you'll have at winning.

KNOCKING AT THE BACK DOOR

When you ram into another rider's back wheel, his bike slows down, wobbles back and forth, and he temporarily loses turning control.

SHOULDER TAPPING

When you bash into another rider from the side, his bike is pushed to the side. The harder you bash him, the farther his bike will move.

FLYING Y

If you hit another rider's front tire, he'll go flying over his handlebars and bite the dust.

TREADING

When a rider is down on the track, you can hit him and run him down. This keeps him from getting back on his bike so quickly.

UNDER CUTTING

If you execute a power turn when a rider is trying to pass you on the outside, you can knock his bike out from under him and send him flying.

CREDITS

Producer
Jessie Taylor

Assistant producer
Greg Becksted

Product Manager
Craig Ostrander

Pinch Hitter
Tony Van

Motocross Photos
Motocross Action Magazine

Test Leads
Marc Dawson
Aaron Loichinger
Derek Carmichael

Testers
Kawme Jeffers
Aaron Drayer
Aaron Homes
Terry Thomas

Documentation
T.S. Flanagan

Special Thanks

Michael Latham

Jenny Martin

Dave Albert

Bob Hardy

Vince Nason

Doug Rebert

Developer

Artech Studios

Artech Product Manager

Rick Banks

Project Team Leader

Christopher Chan

Software Design, Physics, AI

Alexander G.M. Smith

Music & Sound Effects

Darryl Currie

Sound Effects Code

Michael Stevens

Art & Animation

Ron Robinson

Phil LaFrance

Cory Humes

Luc Marier

Track Design & Data Entry

Dan Fanthome

JPEG Adaptation

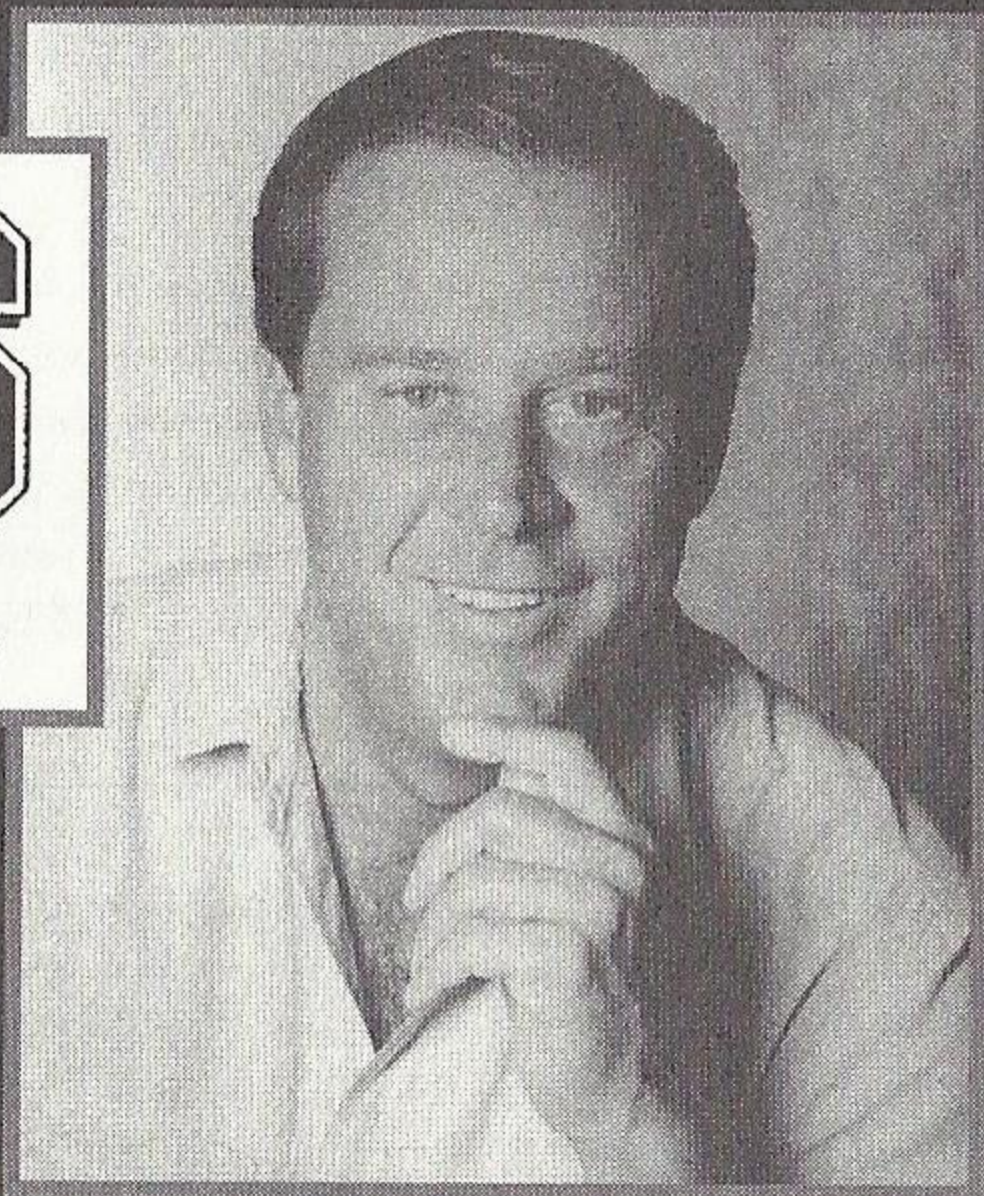
Sebastien Do

3D Bike Modeling

Grey Matter

SPORTS BYLINE

★ U S A ★



Ron Barr, Host Sports Byline USA

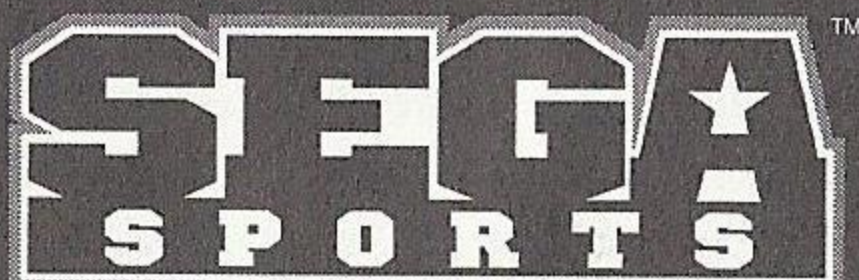
Ron Barr is one of the leading sports broadcasters in America today. He has been on the sports scene for over 25 years. An experienced play-by-play announcer and talk show host, Barr brings instant superstar status to the Sega Sports line.

Ron Barr can be heard nightly on the nationally telecast Sports Byline USA, the nation's premiere sports talk radio show.

- Emmy Award Winner
- 25 years of Sports Broadcasting
- Heard on over 250 Radio Stations Nationwide
- Covered 10 Super Bowls and 3 Olympics

Tune into Sports Byline, USA. Check your local radio listings.

Sponsored by



50,000 Watt Radio Stations

KFMD	95.7 AM	Salt Lake City	8pm-4am MT
KVEG	840 AM	Las Vegas	7pm-1am PT
WBAP	820 AM	Dallas	9pm-12am CT
WMVP	1000 AM	Chicago	12pm-6am ET
WGMP	1210 AM	Philadelphia	10pm-6am ET
WKNR	1220 AM	Cleveland	10pm-6am ET
WWKB	1520 AM	Buffalo	10pm-12am ET
WGTO	540 AM	Orlando	10pm-5am ET
WRVA	1140 AM	Richmond, VA	11:30pm-4:30am ET
WWTN	99.7 FM	Nashville	9pm-10pm CT

Special Thanks

Michael Latham

Jenny Martin

Dave Albert

Bob Hardy

Vince Nason

Doug Rebert

Developer

Artech Studios

Artech Product Manager

Rick Banks

Project Team Leader

Christopher Chan

Software Design, Physics, AI

Alexander G.M. Smith

Music & Sound Effects

Darryl Currie

Sound Effects Code

Michael Stevens

Art & Animation

Ron Robinson

Phil LaFrance

Cory Humes

Luc Marier

Track Design & Data Entry

Dan Fanthome

JPEG Adaptation

Sebastien Do

3D Bike Modeling

Grey Matter

LIMITED WARRANTY

Sega of America, Inc., warrants to the original consumer purchaser that the Sega Genesis Cartridge shall be free from defects in material and workmanship for a period of 90 days from the date of purchase. If a defect covered by this limited warranty occurs during this 90-day warranty period, Sega will repair or replace the defective cartridge or component part, at its option, free of charge. This limited warranty does not apply if the defects have been caused by negligence, accident, unreasonable use, modification, tampering or any other causes not related to defective materials or workmanship.

To receive warranty service in the U.S., call the Sega Consumer Service Department at:

1-800-USA-SEGA

To receive Canadian warranty service, call the Sega Canadian Consumer Service Department at:

1-800-872-7342

DO NOT RETURN YOUR SEGA GENESIS CARTRIDGE TO YOUR RETAIL SELLER. Return the cartridge to Sega Consumer Service. Please call first for further information. If the Sega technician is unable to solve the problem by phone, he will provide you with instructions on returning your defective cartridge to us. The cost of returning the cartridge to Sega's Service Center shall be paid by the purchaser.

REPAIRS AFTER EXPIRATION OF WARRANTY

If your Sega Genesis Cartridge requires repairs after termination of the 90-day limited warranty period, you may contact the Sega Consumer Service Department at the number listed above. If the technician is unable to solve the problem by phone, he will advise you of the estimated cost of repair. If you elect to have the repair done, you will need to return the defective merchandise, freight prepaid and insured against loss or damage, to Sega's Service Center with an enclosed check or money order payable to Sega of America, Inc., for the amount of the cost estimate provided to you by the technician. If, after inspection, it is determined that your cartridge cannot be repaired, it will be returned to you and your payment will be refunded.

LIMITATIONS ON WARRANTY

Any applicable implied warranties, including warranties of merchantability and fitness for a particular purpose, are hereby limited to 90 days from the date of purchase and are subject to the conditions set forth herein. In no event shall Sega of America, Inc., be liable for consequential or incidental damages resulting from the breach of any express or implied warranties.

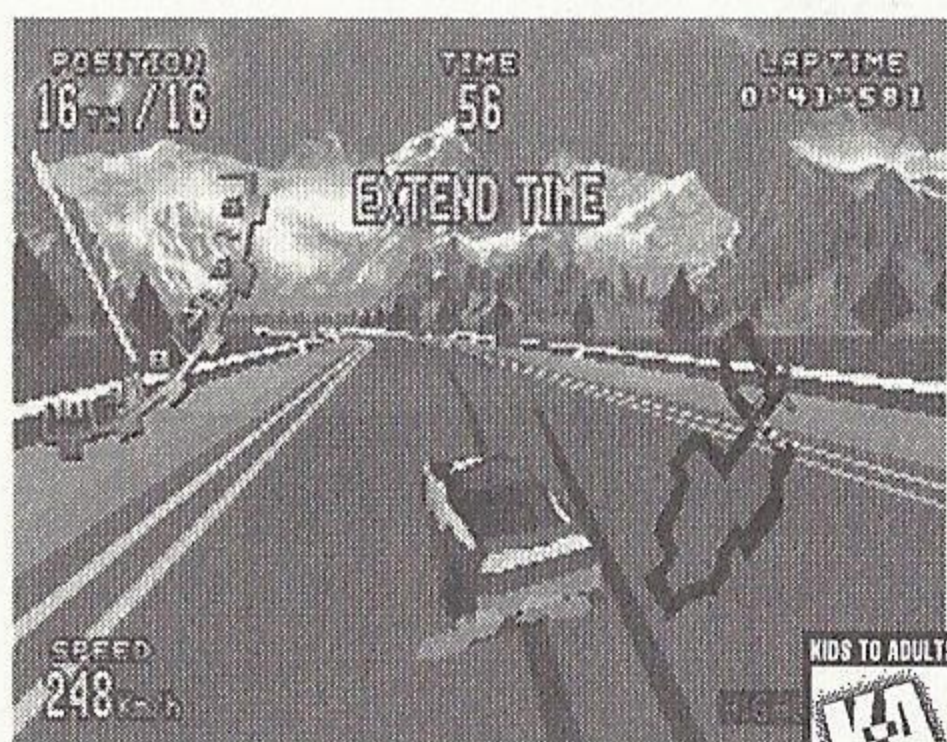
The provisions of this limited warranty are valid in the United States only. Some states do not allow limitations on how long an implied warranty lasts, or exclusion of consequential or incidental damages, so the above limitation or exclusion may not apply to you. This warranty provides you with specific legal rights. You may have other rights which vary from state to state.



Creating the Most Fun &
Realistic Sports Games Today!

GENESIS 32X

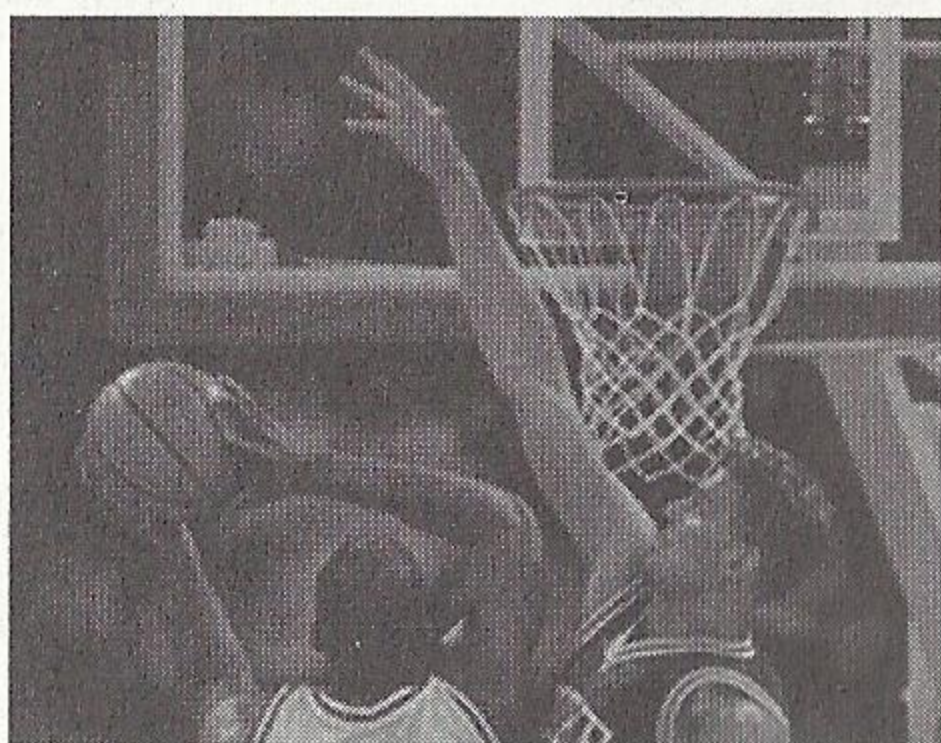
VIRTUA RACING DELUXE™



AVAILABLE NOW



**COLLEGE BASKETBALL'S
NATIONAL CHAMPIONSHIP**



COMING MARCH '95

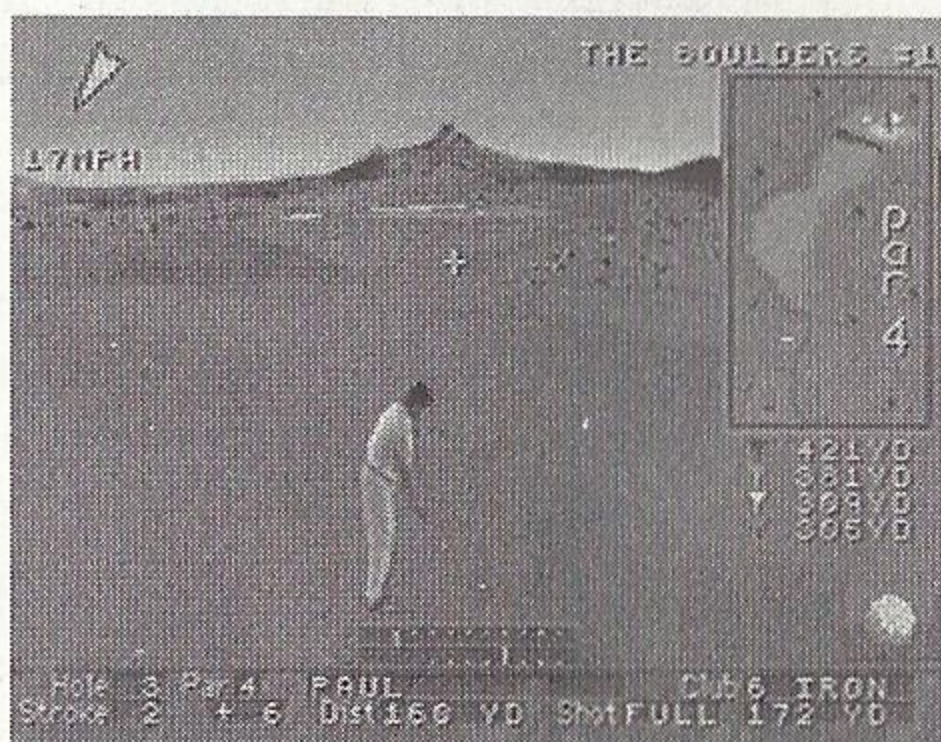
**MOTOCROSS
CHAMPIONSHIP™**



AVAILABLE NOW



**GOLF MAGAZINE® PRESENTS
36 GREAT HOLES**



COMING FEB '95

Sega, Genesis 32X, Sega Sports, Motocross Championship, Virtua Racing Deluxe and College Basketball's National Championship are trademarks of SEGA. GOLF MAGAZINE is a Federally registered trademark of Times Mirror Magazines, Inc. All rights reserved. The university trademarks depicted herein are owned and licensed to SEGA by the respective universities.

© 1995 SEGA, P.O. Box 8097, Redwood City, CA 94063. All rights reserved. Made and printed in the U.S.A.

Patents: U.S. Nos. 4,442,486/4,454,594/4,462,076; Europe No. 80244;

Canada No. 1,183,276/1,082,351; Hong Kong No. 88-4302; Germany No. 2,609,826;

Singapore No. 88-155; U.K. No. 1,535,999; France No. 1,607,029; Japan No. 1,632,396/82-205605 (Pending)