

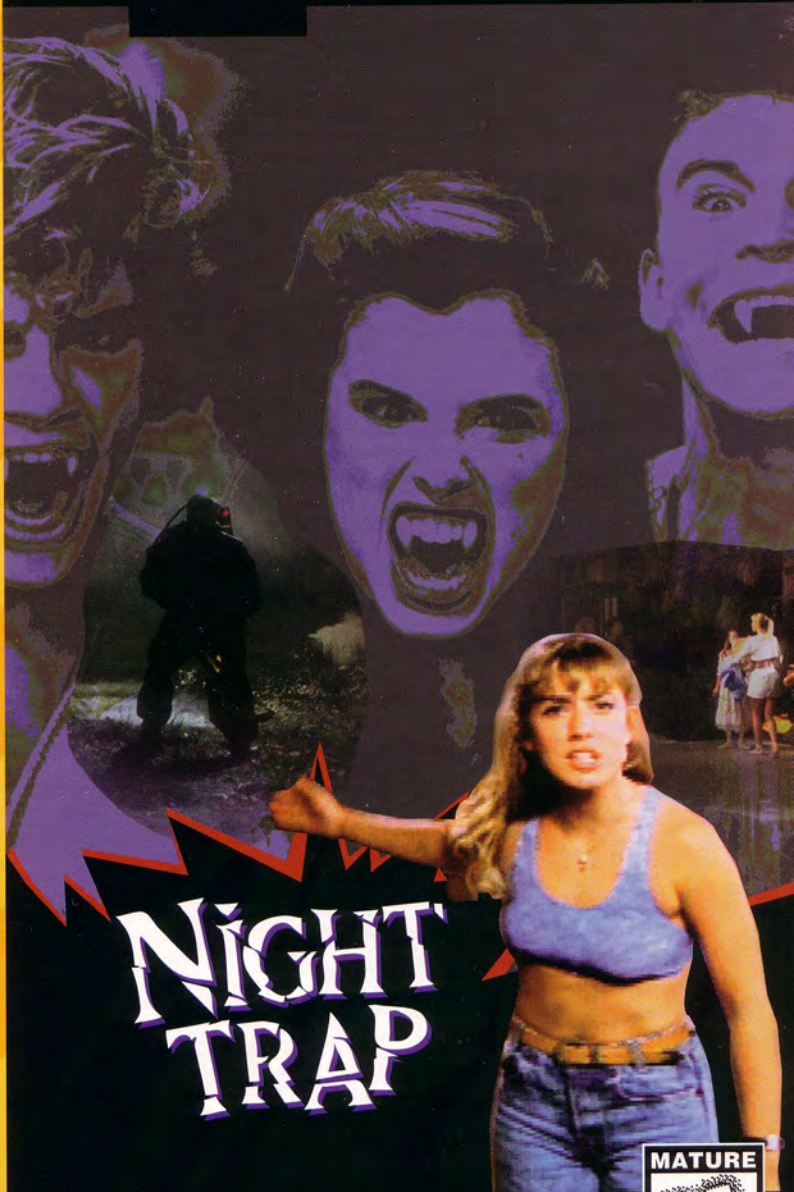
SEGA

Digital Pictures



USER MANUAL

SEGA CD 32X™



NIGHT TRAP



Insta Switch™
CD-ROM
INSTANT
RESPONSE VIDEO
TECHNOLOGY

100% FULL
MOTION
INTERACTIVE
VIDEO

LICENSED BY SEGA ENTERPRISES.LTD.
FOR PLAY ON THE SEGA™ GENESIS
32X™ SYSTEM



W A R N I N G S

Read Before Using Your Sega Video Game System

EPILEPSY WARNING

A very small percentage of individuals may experience epileptic seizures when exposed to certain light patterns or flashing lights. Exposure to certain patterns or backgrounds on a television screen or while playing video games may induce an epileptic seizure in these individuals. Certain conditions may induce undetected epileptic symptoms even in persons who have no history of prior seizures or epilepsy. If you, or anyone in your family, has an epileptic condition, consult your physician prior to playing. **If you experience any of the following symptoms while playing a video game – dizziness, altered vision, eye or muscle twitches, loss of awareness, disorientation, any involuntary movement or convulsions – IMMEDIATELY discontinue use and consult your physician before resuming play.**

PROJECTION TELEVISION WARNING

Still pictures or images may cause permanent picture-tube damage or mark the phosphor of the CRT. Avoid repeated or extended use of video games on large screen projected televisions.

SEGA CD VIDEO GAME USE

This CD-ROM can only be used with the Sega CD and Genesis 32X systems. Do not attempt to play this CD-ROM in any other CD player; doing so may damage the headphones and speakers.

This game is licensed for home play on the Sega CD with the Genesis 32X system only. Unauthorized copying, reproduction, rental, public performance or broadcast of this game is a violation of applicable laws.

Unless otherwise stated, the characters and events portrayed in this game are purely fictional. Any similarity to other persons, living or dead, is purely coincidental.

BACKUP MEMORY

The Sega CD's backup RAM must be formatted before you can save games to it. Use the first **FORMAT** option in the Memory menu to format the Sega CD's internal memory before playing the game. For more information, please see your Sega CD User's Manual.

AUDIO CONNECTIONS FOR ORIGINAL SEGA CD MODEL

- If your Audio connection is made **from the Sega CD** to your television, you must use the Mixing Cable to connect the Headphone output jack on the front of the Genesis to the Mixing input jack on the rear of the Sega CD.
- If your Audio connection is made **from the Genesis** to the television (using either the RF cable or a Video Monitor cable), do not use the Mixing Cable.

HANDLING YOUR SEGA CD 32X DISC INSTRUCTIONS

- The Sega CD 32X Disc is intended for use exclusively on the Sega CD™ and Genesis 32X™ systems.
- Do not bend it, crush it, submerge it in liquids, smudge, or scratch its surface.
- Do not leave it in direct sunlight or near a radiator or other source of heat.
- Be sure to take an occasional recess during extended play, to rest yourself and the Sega CD 32X Disc.
- **KEEP YOUR SEGA CD 32X DISC CLEAN.** Always hold by the edges, and keep in its case when not in use. Clean with a lint-free, soft dry cloth – wiping in straight lines from center to edge. Never use solvents or abrasive cleaners.

ESRB RATING

This product has been rated by the Entertainment Software Rating Board. For information about the ESRB rating, or to comment about the appropriateness of the rating, please contact the ESRB at 1-800-771-3772.



This official seal is your assurance that this product meets the highest quality standards of SEGA™. Buy games and accessories with this seal to be sure that they are compatible with the SEGA CD™ SYSTEM combined with GENESIS 32X™.

Digital Pictures



C O N T E N T S

P A G E

2 Mission Background
2 Security System
3 The Situation
4 Your Mission
5 Activating the Controls
6 Operating the SCAT Controller
7 Strategies for a Successful Mission
8 Customer Service
8 Credits

NIGHT TRAP

S.C.A.T.

Special Control
Attack Team

BRIEFING FILE:

CONFIDENTIAL
EYES ONLY

OPERATION CODE NAME:

NIGHT TRAP

MISSION NUMBER:

230

OFFICER IN CHARGE:

COMMANDER
SIMMS



MISSION BACKGROUND

Five teenagers have disappeared in the vicinity of the lakeshore winery house of Mr. and Mrs. Victor Martin. S.C.A.T. undercover intelligence has determined that the teenagers were reported missing after spending the night as invited guests at the Martins' house.

The Martins claim the missing teenagers left the Martins' home Sunday night. Police investigation failed to turn up any evidence of their whereabouts. The case was then turned over to S.C.A.T.



SECURITY SYSTEM

In a previous undercover operation, S.C.A.T. mission 229, a S.C.A.T. agent infiltrated the Martins' house and discovered something unusual.

Hidden surveillance cameras have been installed in eight locations:

- Guest Bedroom
- Bathroom
- Upstairs Hallway
- Entry Way
- Downstairs Hallway
- Living Room
- Kitchen
- Driveway

More curious is the series of traps located throughout these locations. S.C.A.T. Intelligence believes the cameras and traps may be part of an elaborate security system.

A control panel hidden from view in the basement of the house allows the Martins to operate the cameras and the traps.

As part of the covert infiltration, our S.C.A.T. agent spliced an over-ride cable into the trap and camera control system. This over-ride cable, located in the back hallway, allows S.C.A.T. to remotely control the cameras and traps.

If anyone inside the house discovers the over-ride cable, the covert status of the operation may be jeopardized.

The trap controls are protected with an access code in one of six color variations: red, green, blue, yellow, orange, or purple. The correct access color code must be entered in order for the traps to work. Note that anyone in the house can change the code at anytime from the Martins' hidden basement control unit.



THE SITUATION

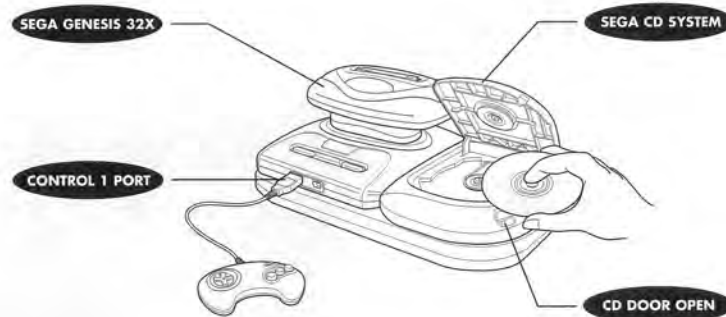
Five more teenagers are on their way to the lake-shore winery house at the invitation of the Martins. Unknown to anyone else, one of them is S.C.A.T. team's best undercover agent, Kelli Medd.

YOUR MISSION

Control of the hidden cameras and traps has been routed to your Sega CD and Genesis 32X remote unit.

Use it to protect Kelli and the other teenagers from any danger inside the house. Switch cameras from room to room to follow the teenagers, and to look for any danger. Use the traps as necessary to capture anyone or anything that may endanger the teenagers. Make sure you don't capture any of the teenagers or members of the S.C.A.T. team.

Together with Kelli, you must find out what has happened to those missing teenagers and whatever else is going on in that house. Listen to conversations to pick up clues and to find out when the access code is changing.



ACTIVATING THE CONTROLS

- 1 Set up your Sega CD™ and Sega Genesis™ as described in the documents that came with the systems. Make sure you have your control pad plugged into port 1 (the one on the left).
- 2 Install your Genesis 32X as described in the documents that came with the 32X. The 32X version of Night Trap will not work without the Genesis 32X installed.
- 3 Turn on your TV or monitor, then turn on your Genesis. The Sega CD logo screen will appear.
- 4 Open the disc tray or the CD door. Place Night Trap CD1 into the tray, label side up. Close the tray or door.
- 5 If the Sega CD logo is still on the screen, press START to begin the game. If the Control Panel is on the screen, move the cursor to the CD-ROM button and press button A, B or C to begin.
- 6 When it becomes necessary to do so, you will be prompted to insert Night Trap CD2. Open the disc tray or the CD door. Place Night Trap CD2 into the tray, label side up. Close the tray or door to continue the mission.



OPERATING THE SCAT CONTROLLER

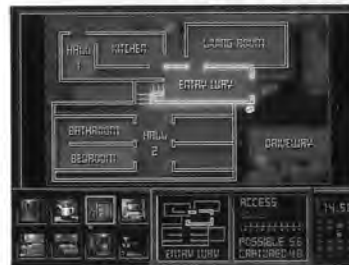
- D-PAD** Use the **D-Pad** to move the marker to highlight the **Camera Location Icon** for the camera that you wish to view.
- A • BUTTON** Press **Button A** to switch to the camera location that is highlighted.
- B • BUTTON** Press **Button B** to trigger a trap.

NOTE: Make sure that the Trap Sensor meter is in the red zone before you try to trigger a trap. If you try to trigger a trap when the meter is not in the red, the trap will not work and the trigger will be locked out for a short period of time.

- C • BUTTON** Press **Button C** to change the color of the current access code. Each time you press Button C, the color code will change to a different color in the sequence Blue, Green, Orange, Purple, Red, Yellow.
- START BUTTON** Press the **START** button to pause the action. When the action is paused, a detailed floor plan of the Martin house replaces the camera video. Press the **START** button to un-pause the action and to return to the camera view.

STRATEGIES FOR A SUCCESSFUL MISSION

CAMERA VIEWS:



Switch camera locations frequently to keep track of the action throughout the house. Listen to conversations to pick up clues. Don't linger in a room where nothing is going on. Use the **D-Pad** to move the marker to highlight the **Camera Location Icon** for the camera that you wish to view, then press **Button A** to switch to that camera location.

ACCESS CODES:

Intelligence shows that the Martins regularly change the access color codes as a safety precaution. If they change the code, you lose control of the traps until you enter the correct code by pressing **Button C**. You will have to listen closely to conversations between any of the Martins to hear when they change the code and to what new color.

When you begin, the access code is set to Blue, giving you full control of the traps.

IMPORTANT: If someone inside the house indicates that they will change the code, wait until they have entered the basement before you change to the same code.

TRAP SENSOR:

Each trap has a sensor that detects when someone is in range of the trap. When the trap meter moves into the red zone, press **Button B** immediately to trigger the trap. If you try to trigger a trap when the meter is not in the red zone, the trap will not work and the trigger will be locked out for a short period of time.

POSSIBLE/CAPTURED:

The counters indicate how many perpetrators you could have trapped so far, and how many you actually have trapped.

A DIGITAL PICTURES PRODUCTION A U-DIRECT® INTERACTIVE FILM

Executive ProducerTom Zito
Original ConceptRob Fulop
.....James Riley
Interactive DesignJames Riley
.....Rob Fulop
Director of PhotographyDon Burgess
ScreenplayTerry McDonell
Computer ProgramingGene Kusmiak
Produced byRic LaCivita
.....Kevin Welsh
Directed byJames Riley
Computer GraphicsLode Coen
.....Dale Barcellos
.....Cuyler Gee
Lead TesterDavid Popovich

In memory of Stephen D. Hassenfeld.

DRIVE ERRORS

This Digital Pictures product is a high-performance CD-ROM application that relies on continuous and accurate operation of your CD-ROM drive.

Surface contamination of the CD-ROM can cause slight hesitations in gameplay. If the contamination is severe enough, the game will pause completely and the error message "Drive Error - Retrying" will appear.

If this happens, *the game has not crashed*. It may take up to ten seconds for the CD-ROM drive to retry looking for the correct data. If the data cannot be read after several minutes, you may have to remove and clean the disc before you can resume playing.

Contamination of the disc can be caused by something as simple as finger prints on the disc surface. Dust, grime, grease, or anything else that might impact on the ability of the CD-ROM drive to read the data, will cause drive errors.

To avoid contamination, KEEP YOUR CD DISC CLEAN. Always hold it by the edges, and keep in its protective holder when not in use. Clean it with a lint-free, soft dry cloth - wiping in straight lines from center to edge. Never use solvents or abrasive cleaners.

TECHNICAL SUPPORT

For problems or questions, contact Digital Pictures' Technical Support Department at (415) 345-0445, 8:30 - 5:30 PST.

LIMITED WARRANTY

Digital Pictures warrants, to the original buyer only, that the media upon which this Program is recorded is free from defects in materials and workmanship under normal use and service for a period of 90 days from the date of purchase. **ANY IMPLIED WARRANTIES ON ANY PROGRAM ARE LIMITED TO 90 DAYS. SOME STATES DO NOT ALLOW LIMITATIONS ON THE DURATION OF AN IMPLIED WARRANTY, SO THIS LIMITATION MAY NOT APPLY TO YOU. OTHER THAN THE FOREGOING LIMITED WARRANTY, DIGITAL PICTURES MAKES NO WARRANTY OR REPRESENTATION AND DISCLAIMS AND EXCLUDES ALL OTHER WARRANTIES, EXPRESS OR IMPLIED, WITH RESPECT TO THE ENCLOSED PRODUCT INCLUDING, WITHOUT LIMITATION, WARRANTIES OF MERCHANTABILITY AND FITNESS FOR A PARTICULAR PURPOSE, OR NON-INFRINGEMENT. IN NO EVENT WILL DIGITAL PICTURES BE LIABLE FOR ANY DIRECT OR INDIRECT, SPECIAL, INCIDENTAL OR CONSEQUENTIAL DAMAGES, INCLUDING, WITHOUT LIMITATION, LOSS OF DATA OR LOSS OF PROFITS OR REVENUE ARISING OUT OF USE OR INABILITY TO USE THE SOFTWARE, EVEN IF DIGITAL PICTURES HAS BEEN ADVISED OF THE POSSIBILITY OF SUCH DAMAGES.** Some states do not allow the exclusion of incidental or consequential damages so the foregoing disclaimer may not apply to you. Digital Pictures does not warrant that the enclosed product or documentation will satisfy the requirements of your computer and/or game system or that the enclosed product or documentation are without defect or error or that the operations of the enclosed product will be uninterrupted.

P A T E N T S	
U.S. #'s 4,442,486/4,454,594/4,462,076	Europe # 80244
Canada #'s 1,183,276/1,082,351	Hong Kong # 88-4302
Germany # 2,609,826	Singapore # 88-155
France # 1,607,029	Japan #'s 1,632,396



Still haven't had enough Digital Pictures?

Just fill out this card and drop it in the mail and you'll receive a free video, giving you a Behind the Scenes look at how these games are made.

Name _____ Phone _____

Street Address _____

City _____ State _____ Zip _____

Male Female Age _____ Game Purchased **NIGHT TRAP (SEGA 32X CD™)**

- 1) Did you: Buy this game Receive it as a gift Borrow it from someone and not give it back
- 2) How many CD ROM games do you own? _____
- 3) How'd you first hear about this game?
 Read a review Saw an ad Rented it Friend told me Saw in the store Other
- 4) What about THIS game made you buy it? _____
- 5) Do you own other Digital Pictures games? Yes No Which ones? _____
 What do you think of them? _____
- 6) What's your overall impression of Digital Pictures games? _____
- 7) Do you: Buy Games Only Rent Games Only Buy and Rent
- 8) Of ALL the games you have, which is the BEST? _____
- 9) Anything else we ought to know? _____



Free Video!

BUSINESS REPLY MAIL

FIRST CLASS MAIL PERMIT NO. 2819 SAN MATEO, CA

POSTAGE WILL BE PAID BY ADDRESSEE

DIGITAL PICTURES, INC.
P.O. BOX 25471
SAN MATEO, CA 94402-9501



NO POSTAGE
NECESSARY IF
MAILED IN THE
UNITED STATES



Night Trap™ was created,
produced and published by
Digital Pictures, Inc.
©1994 Digital Pictures, Inc.
All rights reserved.

Night Trap is a trademark of
Hasbro, Inc. DigiChrome and U-Direct
are registered trademarks
of Digital Pictures, Inc. InstaSwitch™
is a trademark of Digital Pictures, Inc.

Sega, Genesis 32X, and Sega CD are
trademarks of Sega Enterprises, LTD.
All rights reserved.

This game is licensed for home
play on the Sega CD with the
Genesis 32X system only. Unauthorized
copying, reproduction, rental, public
performance or broadcast of this game is a
violation of all applicable laws.

Digital Pictures, Inc.
1825 South Grant Street
Suite 900
San Mateo, CA 94402

Distributed By
Acclaim Distribution, Inc.
71 Audrey Avenue
Oyster Bay, NY 11771

Manufactured and printed in
the U.S.A.