

**namco**

SEGA  
**GENESIS**  
16-BIT CARTRIDGE

# QUAD CHALLENGE



**INSTRUCTION MANUAL**

# **❖ TABLE OF CONTENTS**

INTRODUCTION (TODAY).....	3
STARTING UP YOUR SYSTEM.....	4
TAKING CONTROL.....	5
GETTING STARTED.....	6
THE ATVS.....	8
LET THE RACE BEGIN.....	8
TWO-PLAYER RACING.....	9
THE SCREEN.....	10
SHIFTING.....	10
CORNERING.....	11
JUMPS.....	11
HINTS.....	12
HANDLING THE SEGA CARTRIDGE.....	13
LIMITED WARRANTY.....	14

### **TODAY**

Harsh dawn breaking the east, silhouetting the quads squatting on their trailers. Wind in your face as you walk the track picking lines.

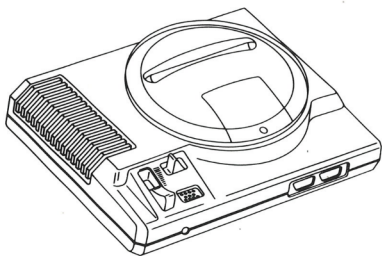
*Today...the championship.*

*Today* is worth the weeks on the road choking down food greasier than the muddy tracks. Pausing on the last corner, you can envision it: The track ripped down to the blue clay base, wicked slick. Quads thundering along, spewing rooster tails of dirt. *Yeah*, and you, hammering the apex with neck breaking torque. Nailing the championship.

You walk back to the pits to tune the suspension. *Today* is the day.

## **❖ STARTING UP YOUR SYSTEM**

1. Set up your Genesis System, following the instructions in your Genesis System Instruction manual. Plug in Control Pad 1.
  2. Make sure the console's power switch is turned off.
  3. Insert the Quad Challenge cartridge into the console with its label facing towards you. Press the cartridge firmly into the cartridge slot.
  4. Turn the power switch on. The Namco screen appears. **NOTE:** If nothing appears on screen, turn the switch off. Check all cables to make sure they are properly connected. Then try again.
- IMPORTANT:** Always make sure your Genesis System is turned off before inserting or removing the game cartridge.
5. Press the Start button on Control Pad 1. The Title screen appears and the race for glory begins.



# **❏ TAKING CONTROL**

To win races it's important to prepare. The first step towards being a successful all-terrain vehicle (ATV) racer is to learn the controls. Take the time, it's worth it.

## **Start Button**

- Press to advance from the Title screen to Menu screen

## **D Button**

- Press to highlight options, selections, letters, and passwords.
- Press left and right to steer the ATV.
- Press to enter selections from the Menu screen.
- Press to start race from Race Menu screen.

## **A Button**

- Press to enter selections from the Menu screen.
- Press to brake ATV.

## **B Button**

- Press to accelerate.

## **C Button**

- Press to enter selections from the Menu screen.
- Press to shift gears.



## GETTING STARTED

- Press the Start button to advance from the Title screen to the Menu screen.

### MENU SCREEN

- Use the D button to highlight the following selections. →

- Use the A or C button to enter your selection.

- Choose from the following selections:



MENU SCREEN

#### USA Championship:

A scorching one-player, sixteen-race competition. Thrash your way to the lead to claim the top position in the ATV world.

**Vs 2Player:** Bury your buddy in head-to-head competition on your choice of nine fierce tracks.

**Name Entry:** Let them know who you are...so they stay out of your way on the track.

### NAME ENTRY SCREEN

- Enter names before advancing to the Race Menu screen.

- Use the D button to highlight letters.

- Enter the highlighted letters with the A or C button.



NAME ENTRY

- Highlight End and press the A or C button to return to the Menu screen.

## PASSWORD SCREEN

- Highlight characters of the password with the D button.
- Enter the highlighted characters with the A or C button.
- Highlight End and press the A or C button to advance to the Race Menu screen.



PASSWORD SCREEN

## OPTION SCREEN

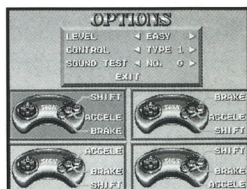
- Press the D button up or down to highlight the options.
- Press the D button left or right to change the option settings.
- Choose from the following options:

**Difficulty Level:** Easy or Hard.

**Control:** Configure the joy pad with this option.

**Sound Test:** Allows you to hear the sounds used in the game.

**Exit:** Selecting Exit and press A or C will return you to the Menu screen.



OPTION SCREEN

## RACE MENU SCREEN

- For USA Championship information, check out the "Let the Race Begin" section.
- For the scoop on Vs. 2Player action see "Two Player Racing."

## **THE ATVs**

Choose one of four ATVs to race. Each has its own unique characteristics. Match the quad to the track or you'll be choking on dust.

**Green Monster:** Buffed out with an engine throbbing seventy-five ponies and a manual transmission. Incredible top speed but sluggish acceleration and handling. Best for tracks with long straight sections.

**Red Devil:** Carves through hairpin curves. Good handling and acceleration characteristics mated to a sweet manual transmission. With sixty-five horsepower, flat out speed is not the Devil's strong point. Fine choice for tracks with wicked turns.

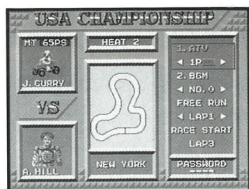
**Blue Thunder:** Better acceleration and handling than the Green Monster, but not up to par with the smaller quads. Seventy horses pump out a high top-end through a solid automatic transmission.

**Yellow Typhoon:** Unbelievable handling and a smooth automatic transmission. With only sixty horse power it's not the fastest quad, but nice for the tight tracks.

## **LET THE RACE BEGIN**

Pop your clutch and spin into the race for the USA Championship.

- From the Menu screen highlight USA Championship and press the A or C button to advance to the Race Menu.
- Press the D button up or down to highlight your selections.
- Press the D button left or right to change high lighted selections.





- Press the D button up or down to move to the next selection. Changes made to selections are entered by moving to another selection.

- Choose from the following selections:

**ATV:** Pick one of four racers.

**BGM:** Choose the Background Music with this selection.

**FREE RUN:** Gives you the chance to practice alone. Choose from one to nine laps. Use it to learn nasty turns and jumps.

**RACE START:** Highlight "Race Start," and press A or C to begin the race.

- If you win the race, you will be given the password for the next race on the Race Menu screen, in the password box.

## **❏ TWO-PLAYER RACING**

Smoke a friend in an intense two-player game.

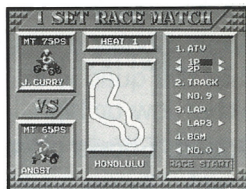
- From the Menu screen select "Vs 2Player."

- Select number of sets you wish to race and press the A or C button to advance to the Race Menu screen.

- Press the D button up or down to highlight your selections.

- Press the D button left or right to change highlighted selections.

- Press the D button up or down to move to the next selection. Make selections by moving to another selection.



**ATV:** Pick one of four vehicles.

**Track:** Select one of nine vicious courses.

**Number of laps:** Two-player game only. Decide how many laps you want the race to be.

**BGM:** Choose the background music with this selection.

**Race start:** Highlight "Race Start" and press A or C to begin the race.

## THE SCREEN

Check out the screen...so you can get the information that you need to win.

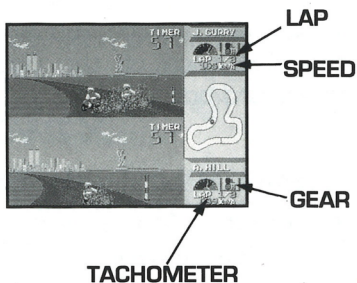
**Lap:** Shows current lap number and total laps in race.

**Tachometer:** Shows your RPMs. Shift when you get into the red zone.

**Gear:** Shows the gear that the quad is in, either low or high.

**Speed:** Shows players current speed.

**Track:** Shows position of players on the race track.



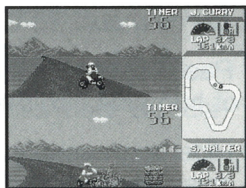
## SHIFTING

Quads with automatic transmissions require no shifting. Manual transmissions have two speeds, high and low. Shift with the C button.

- Shift up when the tachometer hits the red line.
- Shift down in low RPM situations.

## **❏ CORNERING**

After riding quads for a while you will get a feel for the cornering ability of the machines. You have to slide around the corners for the best speed, but if you go in too hot, you'll spin out or flip over. Learn how far you can slide out before you crash.



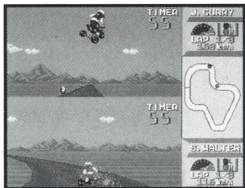
**On the Edge**

- With manual transmission you can shift down in a corner to cut speed and maintain RPM.
- Countersteer with the D button.
- Use the brake and accelerator to maintain the best slide.

## **❏ JUMPS**

Catching some huge air is fun and can help you win the races.

- Don't hold down the accelerator when you land.
- Pressing up on the D button at the top of a jump will give you some radical air.
- Move in the air to set yourself up for the next set of corners.



**Huge Air!**

## **HINTS**

- Don't gun the throttle during the countdown. Press down on the accelerator in the middle of the one count, otherwise you lose traction burning out.
- Pass other riders in the air. There's no chance of bumping into them and slowing down.
- Ride aggressively. To win you will always have to push yourself and your quad.
- Learn the tracks. Know which turns are nasty.

## **⚡ HANDLING THE SEGA GENESIS CARTRIDGE**

- The Sega Genesis cartridge is intended exclusively for the Sega Genesis System.
- Do not bend, crush, or submerge in liquids.
- Do not leave in direct sunlight or near a radiator or other source of heat.

**Warning to owners of projection televisions:  
Still pictures or images may cause permanent picture-tube damage or mark the phosphor of the CRT. Avoid repeated or extended use of video games on large-screen projection televisions.**

## **❖ LIMITED WARRANTY**

Namco Hometek, Inc., warrants to the original purchaser that this Namco Hometek, Inc., cartridge shall be free from defects in material and workmanship for a period of ninety (90) days from the date of purchase. If a defect covered by this limited warranty occurs during this 90-day limited warranty period, Namco Hometek, Inc., will repair or replace the defective cartridge or component part, at its option, free of charge.

This limited warranty does not apply if the defects have been caused by negligence, accident, unreasonable use, modification, tampering, or any other cause not related to defective materials or workmanship.

## **❖ LIMITATIONS ON WARRANTY**

Any applicable implied warranties, including warranties of merchantability and fitness for a particular purpose, are hereby limited to ninety (90) days from the date of purchase and are subject to the conditions set forth herein. In no event shall Namco Hometek, Inc., be liable for the consequential or incidental damages resulting from possession or use of this product.

The provisions of the limited warranty are valid in the United States only. Some states do not allow limitations on how long an implied warranty lasts, or exclusion of consequential or incidental damages, so the above limitation or exclusion may not apply to you. This limited warranty provides you with specific legal rights. You may have other rights which vary from state to state. Send inquiries to:

**Namco Hometek, Inc.  
3255-1 Scott Blvd. Suite 102  
Santa Clara, CA 95054**



**namco**

NAMCO HOMETEK, INC.  
3255-1 Scott Blvd. Suite 102  
Santa Clara, CA 95054-3013

This game is licensed by Sega  
Enterprises Ltd. for play on the SEGA™  
GENESIS™ SYSTEM.

SEGA and GENESIS are trademarks of  
Sega Enterprises Ltd.

MADE IN JAPAN