

namco

SEGA
GENESIS
ORIGINAL SERIES

ROLLING THUNDER 3™



INSTRUCTION MANUAL

ROLLING THUNDER 3™

DISCLAIMER

The persons, names, places, institutions, incidents and commands in this game are all fictional, and do not refer to or portray any incidents. Any resemblance between the persons, names, places, institutions and incidents in this game and actual persons, names, places, institutions and incidents is purely coincidental.

EPILEPSY WARNING

READ BEFORE USING YOUR SEGA VIDEO GAME SYSTEM

A very small percentage of individuals may experience epileptic seizures when exposed to certain light patterns or flashing lights. Exposure to certain patterns or backgrounds on a television screen or while playing video games may induce an epileptic seizure in these individuals. Certain conditions may induce undetected epileptic symptoms even in persons who have no history of prior seizures or epilepsy. If you, or anyone in your family, has an epileptic condition, consult your physician prior to playing. If you experience any of the following symptoms while playing a video game — dizziness, altered vision, eye or muscle twitches, loss of awareness, disorientation, any involuntary movement or convulsions — IMMEDIATELY discontinue use and consult your physician before resuming play.

NAMCO

NAMCO HOMETEK, INC.
150 Charcot Avenue Suite A
San Jose, CA 95131-1102

ROLLING THUNDER 3 IS A TRADEMARK OF NAMCO LTD.,
©1993 NAMCO LTD., ALL RIGHTS RESERVED. LICENSED BY
SEGA ENTERPRISES, LTD. FOR PLAY ON THE SEGA™ GENESIS™
SYSTEM. SEGA AND GENESIS ARE TRADEMARKS OF SEGA
ENTERPRISES, LTD.



This official seal is your assurance that this product meets the highest quality standards of SEGA™. Buy games and accessories with this seal to be sure that they are compatible with the SEGA™ GENESIS™ SYSTEM.

TABLE OF CONTENTS

Orders	4
Starting Up Your System	5
Jump Into the Action	6
Spy 101	7-8
The Game Screen	9
Options	10
Hints	11
Handling the Sega Genesis Cartridge	12
Limited Warranty	13
Notes	14

ORDERS

TO: RT3-OPERATIVE JAY

FROM: WPCO HQ

CLEARANCE: JC-KAL

RE: GELDRA

STATUS:

Agents Albatross and Leila are engaged with operations against Gimdo, the leader of Geldra. Intelligence has placed Dread, the second in command, of the Geldra terrorists in southern California.

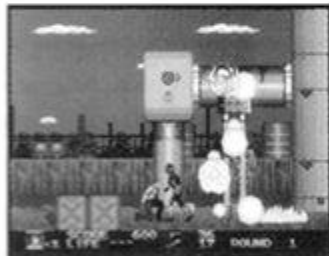


Gimdo

Destruction of both Gimdo's and Dread's networks will neutralize the terrorists. Proceed to southern California and locate Dread.



Your target Dread



Dread's last known location, the refinery...

Good Luck.

End message.

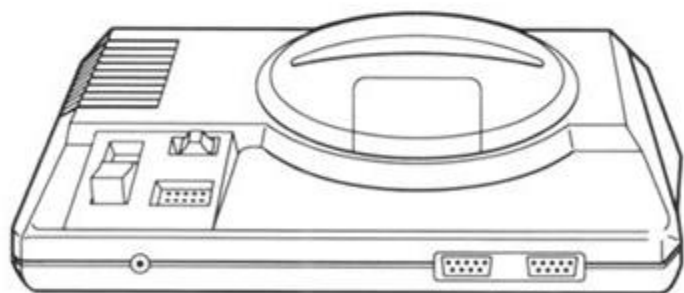
WPCO HQ

STARTING UP YOUR SYSTEM

1. Set up your Genesis System, following the instructions in your Genesis System Instruction Manual. Plug in Control Pad 1.
2. Make sure the console's power switch is turned Off.
3. Insert the *Rolling Thunder 3* cartridge into the console with its label facing towards you. Press the cartridge firmly into the slot.
4. Turn the power switch On. The Namco screen appears.
Note: If nothing appears on screen, turn the switch Off. Check your cartridge to make sure it is inserted correctly, and check all cables to make sure they are properly connected, then try again.

IMPORTANT: Always make sure your Genesis System is turned Off before inserting or removing the game cartridge.

5. Press the Start button on Control Pad 1. The Title screen appears and the fun starts.



JUMP INTO THE ACTION

Read this section to jump right into the intense intrigue of Rolling Thunder 3.

- From the Menu screen press the Control Pad up/down to highlight Game Start.
- Press the Start button to advance to the Weapon Select screen.



Menu screen

- Press the Control Pad to highlight the weapon you wish to use for the round.
- Press the B button to select your highlighted weapon.
- Press the A or C button to unselect a highlighted weapon.



Weapon Screen

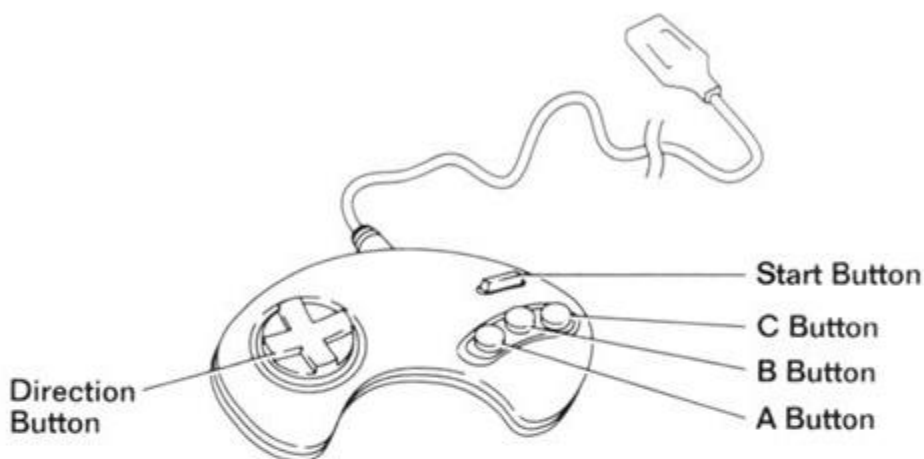
To NOT select a Special Weapon

- To begin a round without a special weapon press the A or C button. See the Hints Section for more details on the advantages of not having a special weapon.
- Press the Start button to begin the game.



SPY 101

To be a secret agent you have to know the moves. Check out the following section for a crash course in mayhem.



Start button.... Press to pause during game play.

A button..... Press to fire special weapon.

Press to use knife (*when you have no special weapon or are out of ammunition.*)

B button..... Press to fire your pistol.

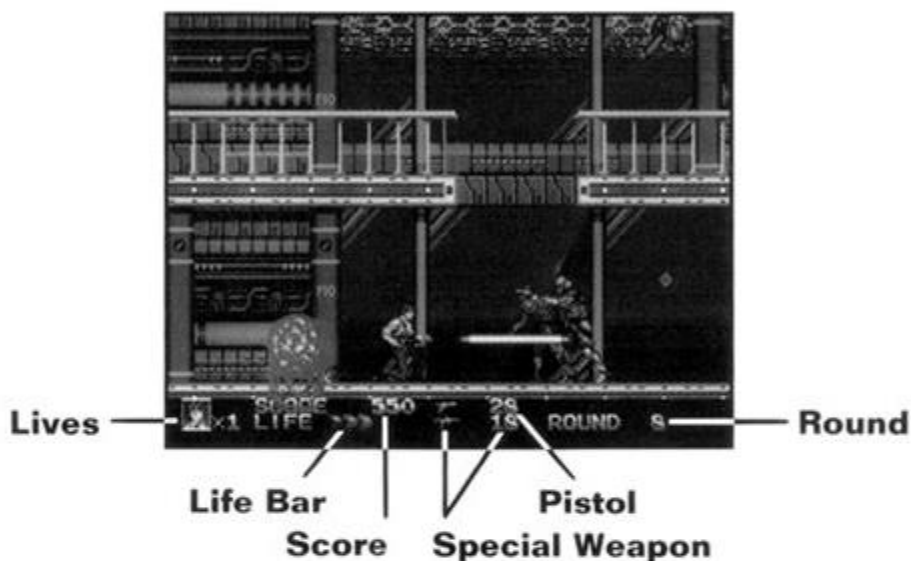
C button..... Press to jump.

SPY 101 CONT.

- Control Pad....** Press down to crouch.
Press left/right to move left/right.
- High Jump.....** While pressing the Control Pad up press the C button to jump.
- Shoot at an angle.....** While pressing the Control Pad at an angle press the B button to fire your pistol. This does not work with special weapons.
- Jump and shoot.....** Press the C button to jump. While jumping press the B button to fire your pistol. This does not work with special weapons.
- Climb.....** To climb up a level, look for a railing on a catwalk above you. If you see a railing you can jump up to it! While pressing the Control Pad up press the C button to jump.

THE GAME SCREEN

Breeze through this section to learn about the world of *Rolling Thunder 3*. Keep your head up and your gun loaded.



Life Bar- Indicates remaining life.

Special

Weapon- Indicates weapon and remaining ammunition.

Pistol- Indicates ammunition remaining.

Lives- Indicates remaining lives.

Round- Indicates current round.

Score- Indicates current score.

OPTIONS

Options let you check out the sound effects and music in the game. Keep reading to find out how.

- From the Menu screen press the Control Pad up/down to highlight Configuration.
- Press the Start button to advance to the Configuration screen.
- Press the Control Pad up/down to highlight the Music or Sound.



Configuration screen

- Press the Control Pad left/right to select a sound.
- Press the A, B, or C button to hear the selected sound.
- Highlight Exit and press any button to return to the Menu screen.

NOTE: Mission and Left can only be changed with special passwords.

HINTS

Get stuck? Blast through this section for a little helpful knowledge.

Special Weapons:

Some special weapons work better on certain levels. If there is a boss, bring some heavy firepower. If there are a lot of enemies, bring the flash. Experiment and you'll figure out the best combinations.

In each level where you get to select a special weapon, there is a door marked with an "S." This door will give you extra bullets for the special weapon which you choose at the beginning. However, if you don't select a special weapon at the beginning of the level you will receive an extra life bar after entering this door. You decide which is best for each level.

When you have no special weapon, or are out of special weapon ammunition, you have the use of a knife. In certain situations, this can be VERY helpful! Use it!

Shooting on Angles, and Jump shots:

Previous Rolling Thunder games did not allow you to jump and shoot, or to shoot on angles. We didn't just add this stuff for looks! Use these powerful additions to your best advantage!

There are three hidden levels in this game. This first one is in level two immediately after the screen scrolls down; all you have to do is shoot... You figure it out!!!!

This game is tough! Very tough! Just the way they should be!! If you're getting stuck, try the password

HANDLING THE SEGA GENESIS CARTRIDGE

- The Sega Genesis Cartridge is intended for use exclusively with the Sega™ Genesis™ System.
- Do not bend it, crush it, or submerge it in liquids.
- Do not leave in direct sunlight or near a radiator or other sources of heat.
- Be sure to take an occasional recess during extended play, to rest yourself and the Sega Cartridge.

Warning to owners of projection televisions:

Still pictures or images may cause permanent picture-tube damage or mark the phosphor of the CRT. Avoid repeated or extended use of video games on Large-screen projection televisions.

LIMITED WARRANTY

Namco Hometek, Inc. warrants to the original purchaser that this Namco Hometek, Inc. cartridge shall be free from defects in material and workmanship for a period of ninety (90) days from the date of purchase. If a defect covered by this limited warranty occurs during this 90-day limited warranty period, Namco Hometek, Inc. will repair or replace the defective cartridge or component part, at its option, free of charge.

This limited warranty does not apply if the defects have been caused by negligence, accident, unreasonable use, modification, tampering, or any other cause not related to defective material or workmanship.

LIMITATIONS ON WARRANTY

Any applicable implied warranties, including warranties of merchantability and fitness for a particular purpose, are hereby limited to ninety (90) days from the date of purchase and are subject to the conditions set forth herein.

In no event shall Namco Hometek, Inc. be liable for consequential or incidental damages resulting from the possession or use of this product.

The provisions of the limited warranty are valid in the United States only. Some states do not allow limitations on how long an implied warranty lasts, or exclusion of consequential or incidental damages, so the above limitation or exclusion may not apply to you. This limited warranty provides you with specific legal rights. You may have other rights which vary from state to state.

Send inquiries to:

Namco Hometek, Inc.

150 Charcot Ave., Suite A

San Jose, CA 95131-1102

Customer Service: (408) 922-0712



Namco Hometek, Inc.
150 Charcot Avenue, Suite A
San Jose, CA 95131-1102

ROLLING THUNDER 3 IS A TRADEMARK OF NAMCO LTD., © 1993 NAMCO LTD., ALL RIGHTS RESERVED. LICENSED
BY SEGA ENTERPRISES LTD. FOR PLAY ON THE SEGA™ GENESIS™ SYSTEM. SEGA AND GENESIS ARE
TRADEMARKS OF SEGA ENTERPRISES LTD. PRINTED IN JAPAN.