

And don't miss Nickelodeon Aaahh!!! Real Monsters
frightful home videos from Sony Wonder™



Wherever videocassettes are sold.

SEGA AND GENESIS ARE TRADEMARKS OF SEGA ENTERPRISES, LTD. ALL RIGHTS RESERVED.

© 1995 Viacom International Inc. All rights reserved. Nickelodeon, Aaahh!!! Real Monsters
and related logos, titles, and characters are trademarks of Viacom International Inc.
Aaahh!!! Real Monsters created by Klasky/Csupo, Inc.

Viacom New Media, 1515 Broadway, New York, NY 10036

Printed in U.S.A.

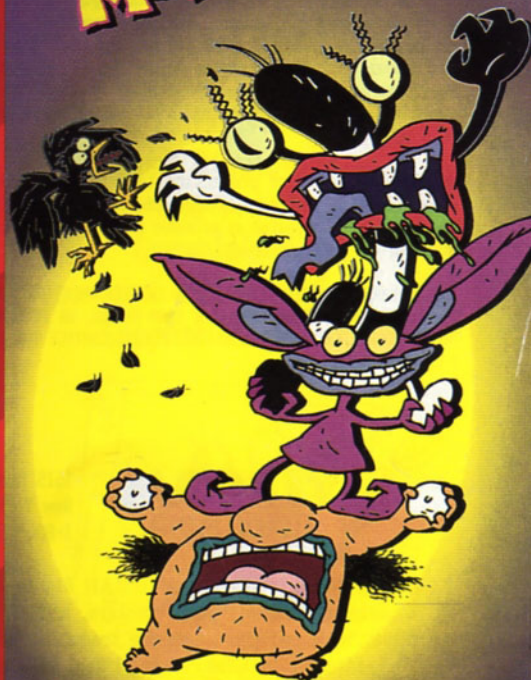
<http://www.replacementdocs.com>

SEGA

GENESIS



NICKELODEON
AAAHH!!!
REAL
MONSTERS™



INSTRUCTION MANUAL

VIACOM
newmedia™

LICENSED BY SEGA ENTERPRISES, LTD.
FOR PLAY ON THE SEGA™ GENESIS™ SYSTEM.

KIDS TO ADULTS



WARNING: READ BEFORE USING YOUR SEGA VIDEO GAME SYSTEM

A very small percentage of individuals may experience epileptic seizures when exposed to certain light patterns or flashing lights. Exposure to certain patterns or backgrounds on a television screen or while playing video games may induce an epileptic seizure in these individuals. Certain conditions may induce previously undetected epileptic symptoms even in persons who have no history of prior seizures or epilepsy. If you, or anyone in your family, has an epileptic condition, consult your physician prior to playing. If you experience any of the following symptoms while playing a video game - dizziness, altered vision, eye or muscle twitches, loss of awareness, disorientation, any involuntary movement, or convulsions - IMMEDIATELY discontinue use and consult your physician before resuming play.

Warning of owners of projection televisions: Still pictures or images may cause permanent picture-tube damage or mark the phosphor of the CRT. Avoid repeated or extended use of video games on large-screen projection televisions.

THIS PRODUCT HAS BEEN RATED BY THE ENTERTAINMENT SOFTWARE RATING BOARD. FOR INFORMATION ABOUT THE ESRB RATING, OR TO COMMENT ABOUT THE APPROPRIATENESS OF THE RATING, PLEASE CONTACT THE ESRB AT 1-800-771-3772.



VIACOM
newmedia.

1515 Broadway
New York, NY 10036
1-800-469-2539

© 1995 Viacom International Inc. All Rights Reserved.
Nickelodeon, Aaahh!!! Real Monsters, and all related titles, logos and characters are trademarks of Viacom International Inc. Aaahh!!! Real Monsters is created by Klasky/Csupo, Inc.



This official seal is your assurance that this product meets the highest quality standards of SEGA™. Buy games and accessories with this seal to be sure that they are compatible with the SEGA™ GENESIS™ SYSTEM.

Contents



Gromble Introduction 2
Handling the Cartridge 4
Setting Up 5
Getting "Startled" 6
Game Controls 8
Triple Monster Moves 10
"Scream" Display 11
Power-Ups and Prizes 12
Gromble's Grades 14
Levels and Enemies 16
Support 22



I am the Gromble...



You may call me 'Your Headmaster Grombleness, Sir.' Your performance so far at the Monster Academy has

shown you to be a disgusting pile of worm-ridden filth - and I'm darn proud of you. **BUT** - you're going to have to prove yourself on your Midterm Exam if you want to call yourself a real monster!

Iekis! Oblina! Krumm! You three will work as a team on this exam. You will stay together at all times and will receive a single gruesome grade on your frightful performance.



For each portion of your exam, I will assign you a delightfully tasty bit of trash to find throughout the City and an



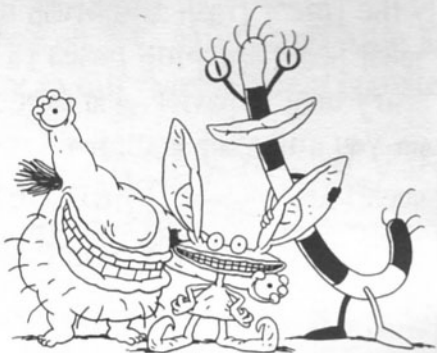
unsuspecting human **Victim** for you to scare. Your assignments will become increasingly terrifying, and to receive a passing grade you must eventually scare even the surprisingly **fright-free Monster Hunter!**

Remember, you terror-trainees, collect only the finest trash and brush up on your most heart-stopping poses to be on your scary best behavior. I'm expecting a lot from you and your monstrous abilities. Any questions? **Nooo?** Then get out there and petrify someone!



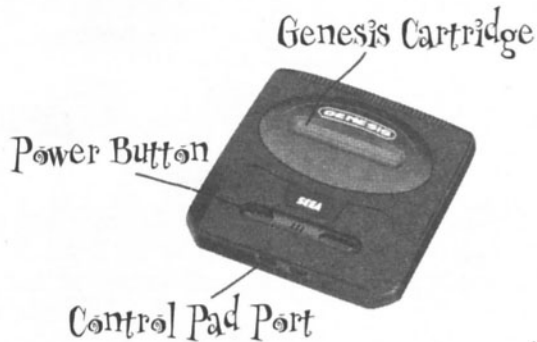
Handling The Cartridge

- The Sega Genesis Cartridge is intended for use exclusively with the Sega™ Genesis™ System.
- Do not bend it, crush it, or submerge it in liquids.
- Do not leave it in direct sunlight or near a radiator or other source of heat.
- Be sure to take an occasional recess during extended play, to rest yourself and the Sega Cartridge.



Setting Up

1. Set up your Sega Genesis System as described in its instruction manual.
2. Plug in Control Pad 1 for 1 player.
3. Make sure the power switch is OFF. Then insert the Aaahh!!! Real Monsters Cartridge into the Genesis unit.
4. Turn the power switch ON. In a few moments, the Aaahh!!! Real Monsters title screen will appear.
5. If the title screen doesn't appear, turn the power switch OFF. Make sure your system is set up correctly and the cartridge is properly inserted. Then turn the power switch ON again.



Getting "Startled"



Make sure your Sega Genesis System is turned off before inserting the "Aaahh!!! Real Monsters" Cartridge.



Insert the "Aaahh!!! Real Monsters" Cartridge.

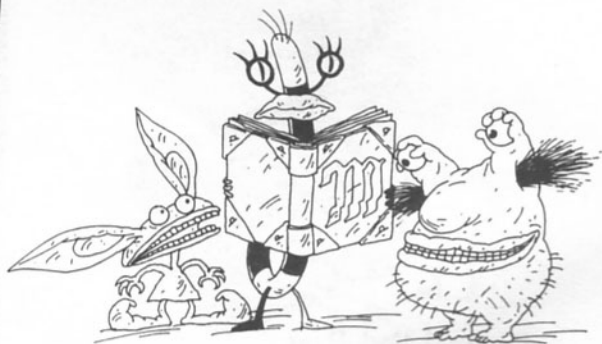


Move the Power switch to the ON position.



Prepare to be monstrous!

Once the title screen appears, use the Directional Pad (D-Pad) to select START or OPTIONS.



Options



Press the Directional Pad UP or DOWN to have the Gromble point to each option. Press the Directional Pad LEFT or RIGHT to scroll through the choices.

Difficulty: SCARY is easier and will keep novice monsters on their guard. NIGHTMARE is more difficult and will keep you up all night!

Music: This is to turn the haunting music ON or OFF. If you keep it on, you'll even hear our personal favorite, the "Elevator Music", it's frightful!

SFX: Use this to turn the scary sound effects ON or OFF.

Controller: Use this to change the control buttons. We have arranged a few really good button combos - see which one works for you.

Press START to return to the title screen.



Game Controls



D-Pad DOWN n' A Button: Switch between Ickis, Oblina and Krumm, determining which monster leads the group. The other two monsters will follow you. The monsters can only be switched when all three are standing on level ground.

Control Pad: Controls the direction you move, jump and throw trash. Press DOWN to crouch and look below you. Press UP or DOWN to scurry up and down ladders.

Start Button: Press this to pause if things get too terrifying. Press again when you're ready to go on.

Start Button: Press this to move story or grading screens along.



Default button assignments (see OPTIONS, page 7 to change button configuration).

A Button: SCARE! Now you're screaming! Use each monster's special scare at the right time to frighten humans away. Since you're just learning this frightful skill, you will need a Monster Manual each time you perform a scare. Careful! They're limited, so use them wisely and look for more Monster Manuals along your way.



B Button: THROW TRASH. All good monsters carry an unlimited supply of trash to throw at enemies. If an enemy gets messy enough, they will usually run away. You can throw while jumping, crouching or hanging from bars. You can't throw while climbing ladders - it's just not safe, even for monsters.

C Button: JUMP. Ickis can jump the farthest. Krumm doesn't jump very high, but this allows him to jump over some objects while avoiding things that are above him. Oblina can jump as high as Ickis, and because she is so tall, she can reach prizes that are higher in the air.

D-Pad UP n' A Button: TRIPLE MONSTER MOVES. Each of the three monsters can perform a unique move using the other two monsters. Learn these moves well - teamwork is frightfully important and your group will need to use Triple Monster Moves to find important rubbish and get past certain obstacles. All three monsters must be standing close together in order to perform a Triple Monster Move. See page 10 for more information.

Triple Monster Moves

Frightening Fling Ickis

is the smallest and most agile monster. When he is leading the group, he can help the trio jump really far across dangerous drops and otherwise impassable chasms.

Position Ickis at the edge of a ledge, press the D-Pad UP + A Button, and watch those monsters fly!



Eerie Eye Ejector

Krumm, as the selected leader, can use his eyeballs to search for hidden rooms, enemies or prizes. Press the D-Pad UP + A Button to have

Krumm put down one of his eyes, which Ickis and Oblina will hit in the direction Krumm is facing. The eye will float and hang. You can use the D-Pad to scroll through the screens to see what lies ahead. When finished, press the A Button to retrieve the eyeball.

Tower of Terror

Oblina is taller than the other two monsters and can help the trio climb steep cliff faces or other tall obstacles. Press the D-Pad UP + A Button to have Ickis and Krumm pile on top of each other and help Oblina reach new heights. Of course, she will help the two others climb up after her. Press JUMP as Oblina climbs to make her bounce especially high.



"Scream" Display



As you are going about your monstrous business, you will notice the following displays at the top of the scream...er, screen.



Heart. Shows how much health you have left. Your health will go down when your lead monster is hit by an enemy or obstacle. If all of your health is lost, you lose a chance at getting a passing grade. Be careful!

Lead Monster and Tries.

Show which of the monsters you're controlling and how many tries you have left to pass your midterm exam.



Trash. Each time you find a bag of fresh trash, you will receive a limited supply of Triple Trash to throw at enemies. Triple Trash will help you eliminate enemies faster. When you run out of Triple Trash, your monster will throw regular run-of-the-dump trash.

Monster Manual. Shows how many times you can use your scare. If you run out, you will have to find more Monster Manuals to study up!



Assigned Prize. For each level, the Gromble will assign a prize for you to find. Look everywhere - you won't be able to move on until you find the prize shown! When you find the prize, a yellow highlight will surround the prize displayed.

Power-Ups and Prizes

All monsters love to eat certain delicacies, which will benefit their health in different ways. Pick up these tasty treats as you search for your goal to keep your health up.

Maggots, Roaches and Flies:

May look like enemies, but these small slimy things are quite delicious. Press DOWN to chomp on one of these and restore your health one point.



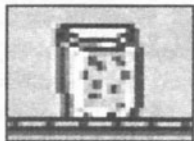
Apple Cores and Soft Drink Cans:

Sink your fangs into these absolutely atrocious edibles to restore one health point.

Jar O' Fleas: Fleas, please!

Nothing goes down quite like these! A jar of these babies will bring your health back to full.

(Krumm likes the crunchy container best.)



Bag of Fresh Trash:

While the monsters have an unlimited supply of trash, finding one of these allows them to throw a limited supply (usually 10 pieces) of particularly potent projectiles that will get rid of enemies faster.

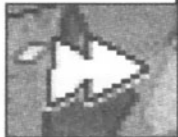


12



Diaper: Lucky monsters become invincible after collecting one of these. Unlike the diaper itself which will be around forever, the invincibility will wear off. Run quickly through dangerous areas once you get one of these.

Completion Marker: If you touch one of the spinning yellow arrows, it will point your way and mark your passage through the level. If you lose a try, you will return to the last marker you touched. You will also find other, non-spinning arrows to help you find your way to your goal.



Monster Manual: Each one of these that you collect will allow you to perform a special scare to frighten humans or other enemies.

Collect them whenever you can - if you run out, you will have to rely on your physical abilities instead of your monstrous ones.

One-Up: Grab these to earn an extra chance to try again from the last Completion Marker you touched. You know it won't be easy to pass the Gromble's test, so get these while you can!

14

Monsters have always loved junk (who wouldn't, living in a dump?) Collect any especially vile trash along the way to improve your grade.



13

Gromble's Grades

Your grade will be based on the standard Monster Academy grading scale. The Gromble has developed a foolproof method for determining the best performance for each group of monsters on their exam. The math is frightfully complex, and can be reviewed in the Monster Academy Offices.

height ratio x 13% terror abilities {6 x
fang length / number of toes} if < 42 x
(5 + decibel level of ear-piercing
scream) + {no. x length of claws} -
(breath odor) x [intrinsic value of trash
collected / shiny shoes] + {ability
to pull disgust} (seriousness of 13) +
(fear threshold) (claws) x t.
belief in existence (ers) x t.
blah blah bugs (escape) }
x (originality) (100%) +
(teamwork) (4)
= **GRADE.**



It's very simple, really. Collect all the assigned prizes, frighten away all the enemies and scare the assigned victim - to get a good score.

The percentages on the screen indicate how many of the prizes you have collected or enemies you've defeated.

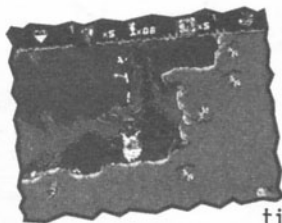
The Monster Academy, as with the finest institutes of higher learning, will reward your performance by grading on the 5-point Roach Scale. 5 roaches, of course, is the best grade.



Levels and Enemies

The City Dump

Each portion of your exam will begin in the dump outside the Academy. There are enemies here, but you must complete the dump level to reach the human world.



Some enemies scrounge for the same food you do, (crows and rats) while others protect the valuable refuse (junkyard cats and dogs). Falling tires, spiky plants, spewing sewage and crushing trash compactors are everywhere and should be avoided. There's even an old rubber ducky shooting bubbles - Aaahh!!! You know how monsters hate to be clean!

Fortunately, there are many things to help you in the dump as well, such as springs, slides, bars to climb on or slide down, levers to open doors and pipes to carry you who-knows-where. Old fans blow you around, so you'll need to perfect your flying skills to use them to your advantage; (try aiming your leading monster for the fan itself instead of the air above the fan).

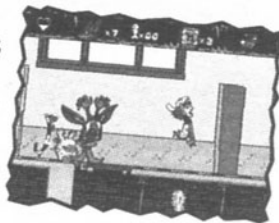


The Human School

Your assigned prize here is a red sneaker, and your victims will be the school librarians, but somehow you've ended up in the gymnasium!

Kids with water balloons, basketballs, tennis balls and paper airplanes are running everywhere - and you thought YOU were the monsters! Defeat them with your trash, or scare them away if they start overwhelming you.

Watch out for basketballs and volleyballs thrown from off-screen, and keep moving from side to side when you're climbing ladders.



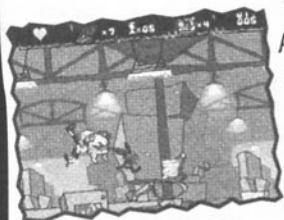
- Trampolines are always fun to play on, but be careful where you land.
- Springboards can be pushed to different locations, and you can even use them to shoot yourself into a basketball hoop.
- Watch out for steam, and stay out of showers, for Krumm's sake!
 - Some toilets are a quick means of transportation; just press DOWN when you're on one.



Once you make it through the gym, you'll have to brave the school halls. Kids are running everywhere and are especially fast when the school bell rings. Duck into the air ducts or hop up on the lockers to get out of the way.

The Post Office

Your next assigned prize is a coffee mug, and your victim will be the head postal clerk. She is located deep inside the automated package-receiving area, and has seen everything, so she will be especially hard to scare.



Watch out for the machinery! Avoid the heavy mailbags and falling packages, automatic sorting machines and package-grabbing arms (though these might give you a free ride)! Postal workers are quick with their clipboards, but mostly defenseless. Don't get hit!

Large boxes can sometimes be knocked off ledges by your trash and pushed to different areas to help you reach high locations. Mail carts might contain hidden springs or prizes, just keep your eyes open for falling packages. You can walk on conveyor belts regardless of which direction they are moving, but you may be able to find levers and reverse the belts to help you. Opening and closing post office boxes are simple once you get the rhythm down.

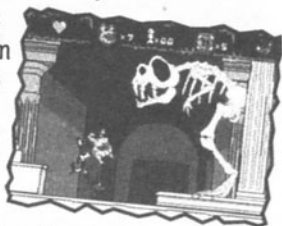
HINT: The head postal clerk has seen everything, so she is especially hard to scare. Try the switches on the wall.



The Natural History Museum

Your assigned prize here is a golden dinosaur skull and your intended victim is the brave museum guard.

Dinosaurs may have ruled the earth once, but monsters rule now! The museum is a fun place, with many huge exhibits to climb on - just watch out for skeletons with spikes or sections that might break beneath you. There are also mechanical dinosaurs (Pteranodons) in here dropping eggs and another dinosaur that spits whenever you come near. The school kids are back, on a field trip this time, and they seem to have the run of the place. The dino skull exhibit makes an outrageous obstacle course and the "Plants of the Dinosaur Age" might bounce you to frightening heights.

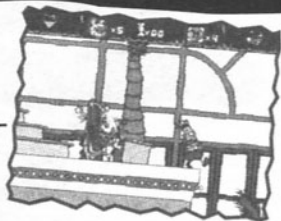


The shallow tar pits will only slow you down, but watch out for the deep tar pits!



The Mall

You can find all sorts of things at the mall - hopefully you can find your assigned prize, a Chinese take-out container. Your assigned victim here is the Karate Mom.



The school kids are back, but this time they're shopping! They've traded in their sports equipment for radio-controlled tanks and dune buggies that chase after you. Use the fountains and trees to get up high. Watch out for the steam, spiky cactuses, and pie-throwing jack-in-the-boxes. Beware of the Karate Mom - she moves as fast as she shops.

The Monster Hunter's House

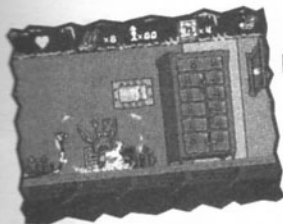
Now you're ready for the Gromble's final test - the house of Simon, the Monster Hunter. Your assigned prizes will be three photos of the monster trio (Ickis, Oblina and Krumm), and your victim is Simon. You've already seen this scary fellow - he's been taking your picture, trying to prove that you exist.

But you can't have that - if humans believe in monsters, they won't be as frightened by you. First you have to get by all of his super-secret traps and defenses, which are designed to capture monsters like you!



The U.F.O. is one of the Monster Hunter's earliest creations. They hover about, searching for monsters. If it spots one, it moves in to harass them or release a monster net. If you're caught in a net, you'll have to use a scare to get free - don't worry, it won't use up any of your Monster Manuals.

The Monster Trackers look like vacuum cleaners, and they once were. Now they are computer-controlled devices for tracking and capturing monsters. Some of the Trackers are set on patrol, and will ignore you, but others seek out and attack monsters. If you're fast, you can avoid the Monster Trackers.



In the first level of the Monster Hunter's House, you need to find the picture of Ickis before you can exit. In the second level, you need to find and defeat Simon.

HINT: The Monster Hunter can only be scared when he changes his glasses - try turning the lights on and off and see what happens!



Support

For additional help, please contact us Monday through Friday
between the hours of
7 AM and 8 PM, Mountain Standard Time at:



VNM Product Support
PHN: 1-970-339-7114
FAX: 1-970-339-7022

Credits n' Acknowledgements

Developed by: **Realtime Associates, Inc.**

Lead Programmer: **Jim Schuler**
Assistant Programmer: **Dave Connelly**
Map Layout and Design: **Kevin Chan**
Background Art: **Ellen Drucker**
Doran Fish
Jeff Cook
Animators: **Shelley Futch**
Martine Gaudissart
Barbara Lipton
Perry Kiefer
Sean Platter
Laura Smith
Jean Bergesen
Additional Art: **Greg Turner**
Music Composed: **Eric Swanson**
Music Adapted for Genesis: **Dave Javelosa**
Additional music and SFX: **Eric Swanson**
Jennifer Sward
Producer: **Dave Warhol**
Executive Producer: **Chad Bunch**
Testers: **Robert Lark**
April Tyree

Special Thanks to:

VIACOM NEW MEDIA

Executive Producer:
Publishing Producer:
Associate Producer:
Marketing Director:
Marketing Coordinator:
Managing Producer/
Nickelodeon Interactive:
Manager/Development Support:

Game Analyst:
Lead Tester:
Testers:

Special Thanks to:

Manual Design:

**Ed Higa and
the SNES Team**
Rick Chipeco
Ann Lediaev

Kenny Miller
Matt Welton
Jackson Young
Rebecca Randall
Amy McPoland

Donna Friedman
Scott Lawrence
John Podlasek
Cliff Falls
David Gohman
Donald Hill
John Kelly
Mike Lee
Jim Raff
Nancy Blumenthal
Jim Breazeale
Alice Coleman
Michelle Jabloner
Juan Ortiz
Syma Sambar
Cricket Stettinius
Katherine Lee
Beeline Group, Inc.

Aaahh!!! Real Monsters is created by



Notes

Warranty

VIACOM NEW MEDIA Limited Warranty

Viacom New Media warrants to the original purchaser only that the Cartridge provided with this manual and the software program coded on it will perform in accordance with the descriptions in this manual when used with the specified equipment, for a period of 90 days from the date of purchase. If the program is found defective within 90 days of purchase, it will be replaced. Simply return the Cartridge with it's original packaging to Viacom New Media or its authorized dealer along with a dated proof of purchase. Replacement of the Cartridge, free of charge to the original purchaser (except for the cost of returning the Cartridge), is the full extent of our liability.

EXCEPT FOR THE LIMITED WARRANTY ABOVE, VIACOM NEW MEDIA EXPRESSLY DISCLAIMS ANY AND ALL WARRANTIES, WHETHER ORAL OR WRITTEN, EXPRESSED OR IMPLIED, INCLUDING, WITHOUT LIMITATION, ANY IMPLIED WARRANTIES OF MERCHANTABILITY, FITNESS FOR A PARTICULAR PURPOSE AND NON-INFRINGEMENT OF THIRD PARTY RIGHTS.

Viacom New Media shall not be liable for incidental and/or consequential damages for the breach of any expressed or implied warranty including damage to property and, to the extent permitted by law, damages for personal injury, even if Viacom New Media has been advised of the possibility of such damages. Some states do not allow the exclusion or limitation of incidental or consequential damages or limitation on how long an implied warranty lasts, so the above limitations or exclusions may not apply to you.

This warranty shall not be applicable to the extent that any provision of this warranty is prohibited by any federal state or municipal law which cannot be pre-empted. This warranty gives you specific legal rights and you may also have other rights which vary from state to state.



VIACOM
newmedia

1515 Broadway
New York, NY 10036
1-800-469-2539

Patents: U.S. ^{ms} 4,442,486/4,454,594/4,462,076; Europe ^m 80244;
Canada ^{ms} 1,183,276/1,082,351; Hong Kong ^m 88-4302;
Germany ^m 2,609,826; Singapore ^m 88-155. U.K. ^m 1,535,999;
France ^m 1,607,029; Japan ^{ms} 1,632,396.

