

LOOK FOR

MOBILE LIGHT  
FORCE

ALSO AVAILABLE FOR THE PlayStation® GAME CONSOLE.



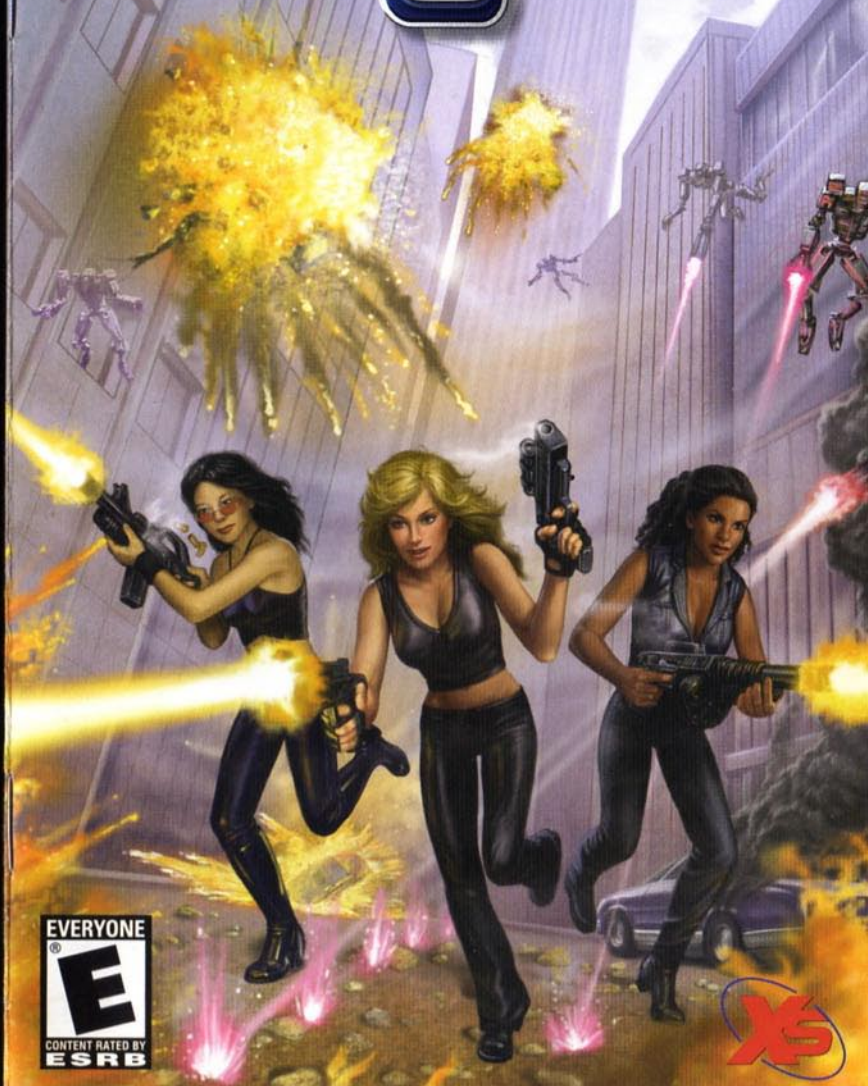
EmuMovies

XS Games LLC, 8800 Global Way, West Chester, OH 45069.  
©2003 XS Games LLC. (c)1995 PSIKYO. Sublicensed by Four Winds Inc.

Licensed for play on the PlayStation 2 computer entertainment systems with the NTSC U/C designation only. "PlayStation" and the "PS" Family logo are registered trademarks of Sony Computer Entertainment Inc. The ratings icon is a trademark of the Interactive Digital Software Association. Manufactured and printed in the U.S.A. THIS SOFTWARE IS COMPATIBLE WITH PLAYSTATION 2 CONSOLES WITH THE NTSC U/C DESIGNATION. U.S. AND FOREIGN PATENTS PENDING. U.S. AND FOREIGN PATENTS PENDING.



MOBILE LIGHT  
FORCE  
2



**WARNING: READ BEFORE USING YOUR PLAYSTATION®2 COMPUTER ENTERTAINMENT SYSTEM.**

A very small percentage of individuals may experience epileptic seizures when exposed to certain light patterns or flashing lights. Exposure to certain patterns or backgrounds on a television screen or while playing video games, including games played on the PlayStation 2 console, may induce an epileptic seizure in these individuals. Certain conditions may induce previously undetected epileptic symptoms even in persons who have no history of prior seizures or epilepsy. If you, or anyone in your family, has an epileptic condition, consult your physician prior to playing. If you experience any of the following symptoms while playing a video game – dizziness, altered vision, eye or muscle twitches, loss of awareness, disorientation, any involuntary movement, or convulsions – IMMEDIATELY discontinue use and consult your physician before resuming play.

**WARNING TO OWNERS OF PROJECTION TELEVISIONS:**

Do not connect your PlayStation 2 console to a projection TV without first consulting the user manual for your projection TV, unless it is of the LCD type. Otherwise, it may permanently damage your TV screen.

**USE OF UNAUTHORIZED PRODUCT:**

The use of software or peripherals not authorized by Sony Computer Entertainment America may damage your console and/or invalidate your warranty. Only official or licensed peripherals should be used in the controller ports or memory card slots.

**HANDLING YOUR PLAYSTATION 2 FORMAT DISC:**

- This disc is intended for use only with PlayStation 2 consoles with the NTSC U/C designation.
- Do not bend it, crush it or submerge it in liquids.
- Do not leave it in direct sunlight or near a radiator or other source of heat.
- Be sure to take an occasional rest break during extended play.
- Keep this compact disc clean. Always hold the disc by the edges and keep it in its protective case when not in use. Clean the disc with a lint-free, soft, dry cloth, wiping in straight lines from center to outer edge. Never use solvents or abrasive cleaners.

## CONTENTS

TABLE OF CONTENTS .....	1
CONTROLS.....	3
MAIN MENU, PAUSE MENU.....	4
HOW TO LOOK AT THE SCREEN .....	4
HOW TO ATTACK.....	5
KUGA KOUTARO.....	6
SAYO YUUKI.....	6
GENNOJO HUGA.....	6
FUMIKO OZET VANSKUTEIN.....	7
KIM DE JON.....	7
???	7
ENEMY CHARACTERS .....	8
NORMAL MODE .....	9
PRACTICE MODE, 2 PLAYER SIMULTANEOUS MODE .....	10
OPTION .....	11
GALLERY, SIDE STORY .....	11
TECHNIQUES AND HINTS.....	12
WARRANTY .....	13

In Tokyo, many bizarre murders were happening.

**SUMMER OF JULY 2005**

All the victims were female. They were all killed by shock. Their bodies were carved out neatly with a sharp knife while the victims were still alive during a 20-hour time span.

**JULY 21ST**

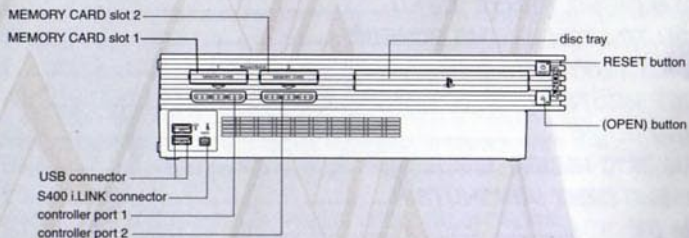
The 31st victim was found and the police decided to take it to the special 568 force. They use the Okaruto as an observer and start their investigation.

**ON JULY 23RD**

At the 32nd crime scene the story begins.

## GETTING STARTED

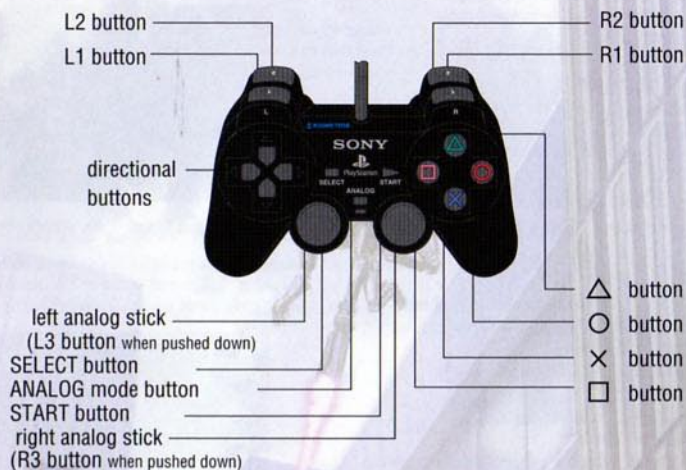
### PLAYSTATION<sup>2</sup> COMPUTER ENTERTAINMENT SYSTEM



Set up your PlayStation<sup>2</sup> computer entertainment system according to the instructions in its Instruction Manual. Make sure the MAIN POWER switch (located on the back of the console) is turned on. Press the RESET button. When the power indicator lights up, press the (OPEN) button and the disc tray will open. Place the MOBILE LIGHT FORCE disc on the disc tray with the label side facing up. Press the (OPEN) button again and the disc tray will close. Attach game controllers and other peripherals, as appropriate. Follow on-screen instructions and refer to this manual for information on using the software.

## CONTROLS

### DUALSHOCK<sup>2</sup> ANALOG CONTROLLER CONFIGURATIONS



**Directional buttons/left analog stick – Move user's character**

**Left analog stick – Movement**

**ANALOG mode switch – Turn on the analog mode to use the left analog stick (Red light on)**

⊙ button – Autofire

⊗ button – Hold down for the Mobile Light Force 2 Attack

⊕ button – Special Attack (Bomber)

△ button – Not used

#### **MENU, DIFFERENT SCREENS**

**Directional buttons/left analog stick – menu select**

⊙⊗⊕⊙⊙⊙ buttons – menu confirm

• All the directions on the manual are with default setting

• You can change the button settings with the "Key Assign" in the option menu

• This software does not support the vibration function

⊙ button – Menu confirm

△ button – Return to previous menu

# MAIN MENU

If you press the START button in the title screen you will see the bottom screen. Choose the different mode or the OPTION button.

## NORMAL MODE

Normal game play

## PRACTICE MODE

Choose and practice any stage

## OPTION

Change difficulty, access to the gallery, etc.



## PAUSE MENU

If you press the START button during game play, you will get the Pause Menu

## WAIT

If you turn it on, the movement speed will vary like in the arcade mode

If you turn it off, the speed will not change

## MODE TITLE

It will return to the Game Mode Title

## MAIN TITLE

It will return to the Main Menu

## STAGE SELECT

It will take you to the Practice Mode screen

## RESUME

Resume game play



## HOW TO LOOK AT THE SCREEN

**SCORE** – Your current score.

**TIME** – When the time hits 0, a devil will appear. If you destroy the Boss or the middle Boss, you will gain an extra 70 seconds.

**ITEMS** – You will power up with the number of coins. If you are damaged, you lose coins.

**BOMBS** – Number of bombs left. You start with 3 and can get a maximum of 5.

**LIFE GAUGE** – This is your life gauge. Each time you are hit, you lose a life. When all lives are gone, the game is over.

**BOSS LIFE** – This is the boss's life gauge. If the gauge becomes empty, you pass the stage.



## ATTACK SPECIFICATIONS

### NORMAL ATTACK

Hold the button or for autofire, press the button rapidly to shoot. As you pick up coins, you will level up. Each time you get hit, your level will go down one.

Level 1 – 1 Coin

Level 2 – 100 Coins

Level 3 – 280 Coins

Level 4 – 640 Coins



### MOBILE LIGHT FORCE 2 ATTACK

Hold down the button to use the Mobile Light Force 2 attack. While using this attack, coins will be collected automatically, however, the characters movements will slow down.



### SPECIAL ATTACK

If you press the button, a bomb will be dropped. You will start with 3 bombs, and up to 5 bombs can be stocked. During the Special Attack, you will not get hurt.



### **KUGA KOUTARO**

A retired cop who is always calling Yama-san. He wears a unique school uniform and has many charms. He controls the beautiful human eating devil "Sazae-san" and traps his victims. He plants bombs and uses them for his advantage. He also cannot stop arguing with Yuuki Sato.

#### **NORMAL ATTACK.**

**MOBILE LIGHT FORCE 2 ATTACK** – Human eating Sazae-san will automatically attack enemies.

**SPECIAL ATTACK** – Trap Bomb (the closer to the center of the bomb, the stronger the damage).

### **YUUKI SATO**

Comes from a strong religious home that dates back to the war era. An expert in using spiritual power. She is 16, but because of her nature, she has never gone to school. She uses the Yata Spiritual Bird, and is a battle expert. She has left her town by train and has arrived at the Tokyo station.

#### **NORMAL ATTACK.**

**MOBILE LIGHT FORCE 2 ATTACK** – The Yata Bird will rotate around you and attack the enemy.

**SPECIAL ATTACK** – Will damage everything on the screen.

### **HYUGA GENNOJO**

A very special detective. Always wearing a black suit, hat and sunglasses. He is currently working on a case that he received from a young client. He also receives many black market weapons from foreign contacts. He is from the wolf god bloodline, therefore when he gets mad, he changes into a wolf.

#### **NORMAL ATTACK.**

**MOBILE LIGHT FORCE 2 ATTACK** – A great search laser.

**SPECIAL ATTACK** – Turns into a wolf and attacks enemies.



### **FUMIKO OZET VANSHTIEN**

A German witch who immigrated to Japan. Now she lives a quiet life with her long hair and glasses, and wants to help others. In her dark clothes, she rides her broom with super speed. On her arm she has the skull and cross. She uses the "Eye of Ethiopia" to ward off evil spirits from entering Japan.

#### **NORMAL ATTACK.**

**MOBILE LIGHT FORCE 2 ATTACK** – A lot of damage where she aims.

**SPECIAL ATTACK** – Damages everything on the screen.

### **KIM DE JON**

A Korean Fighter. At night he is a fighter, but during the day he teaches young children tae kwon do. One day one of his Japanese students was killed, and he closed his dojo to seek the killer. He wears a trench coat and carries a guitar case with a sword inside.

#### **NORMAL ATTACK.**

**MOBILE LIGHT FORCE 2 ATTACK** – Turn 360 degrees with the directional keys.

**SPECIAL ATTACK** – Shoots ammo fire and missiles.

### **???**

A very mysterious woman. Claims to have been to the 7 worlds.

#### **NORMAL ATTACK.**

**MOBILE LIGHT FORCE 2 ATTACK** – A lot of damage where she aims.

**SPECIAL ATTACK** – Damages everything on the screen, and can only be used once.

\*Push the directional button twice in the same direction to warp.



# ENEMY CHARACTERS

## STAGE 1

### AKUMIYOKO

A child star who has been acting for 10 years. She fell in love with her manager, and right before their engagement, he was killed in an accident. She returns as a devil and kills yakuza gang members.

"All I wanted was for him to have a happy life..."

## STAGE 2

### SHUFUJISHIMA

A military officer who wanted to bring the gods back to Tokyo. He took 700 of his men into Mt. Fuji and vanished only to reappear in Tokyo. He reappears as the devil and burns down the city.

"I have no regrets. I'm going to die for my country..."

## STAGE 3

### AKUHIROSHI

His wife was killed by a killer who enjoyed watching her die. However, he only received a very light sentence so he killed the killer at the courthouse and turned into a devil.

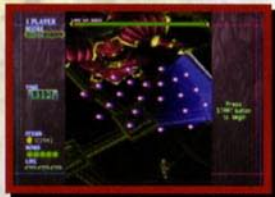
"Is this what you call justice!?"

## STAGE 4

### AKUBAUMAN (BAD WARRIOR)

A Japanese actor that was supposed to die with his wife in Japan, but sold his soul to the devil to get a new young body. He becomes the character in his play and continues to kill.

"I'll show you the best act ever..."



**START** – This will start the game. Select the character you want to choose. It will then explain the controls. If you want to skip the explanation, press start.

**EXIT** – Return to the Menu.

**CONTINUE** – Press the START button during the countdown to continue from where you finished. You only have 9 credits to continue. If you continue, the time and score will be reset. Coin items will remain.

**STAGE CLEAR RESULTS** – Clear bonus is calculated with how you finished the game.

- Time Bonus = time left x100
- Item Bonus = item x10
- Tension Bonus = (time bonus + item bonus) x tension average
- Stage total score = total score after bonus points

**GRADE RESULTS** – After the game is over you will see a grade screen. If you get a high score, you can enter your name up to 4 letters. Use the directional nutton left/right to select the letter and the  $\otimes$  button to select. To return to the main menu, press the START button.



## PRACTICE MODE

Select a level to practice. You can only select the stage that you passed in the normal mode without any continues. Once you pass the stage you will return back to the stage select screen. Your practice score will be recorded.

\*This is for 1 player mode only. You cannot have 2 players play at the same time.

## 2 PLAYER (SIMULTANEOUS)

You can play 2 players at the same time. During normal game play, press the START button on the player 2 controller to join the game. Select the character with the directional button and push any button to join in.



## OPTION

**EXIT** – Return to the main menu

**DIFFICULTY** – Set the difficulty level

**WAIT** – Regular mode ON/OFF

**AUTO SAVE** – Turn the auto save feature ON/OFF

**SYSTEM LOAD** – Load the system file

**SYSTEM SAVE** – Save the system file

**KEY ASSIGN** – You can assign the shot, bomb, and auto buttons

**BGM VOLUME** – Adjust the background music

**SE VOLUME** – Adjust the sound effect volume

**BGM TEST** – Listen to the background music

**PICTURE** – Adjust the screen quality

**GALLERY** – Character gallery

**GALLERY** – Choose "gallery" in the option menu to see the character's picture and basic information. Many different situations will add pictures to the gallery. Select Exit to return to the option screen.

Select the picture you want to enlarge. Choose  $\otimes$  or  $\odot$  button to go back to the GALLERY menu.



## TECHNIQUES AND HINTS

### **T.B.S. (TENSION BONUS SYSTEM)**

The closer the enemy gets to you, the more bonus points you can receive, anywhere from 2x - 8x. At the 8x point, you can use the Height Tension attack, which is 1.5 to 2 times stronger.

### **T.B.S. + MOBILE LIGHT FORCE 2 ATTACK**

When the enemy is close and you use the Mobile Light Force 2 attack, the number of items that appears is also 2x - 8x.

### **TIME LIMIT REACHES "0"**

When the time limit reaches "0," an undefeatable devil will appear. You cannot defeat it, so try to pass the stage within the time limit. If you beat the boss or the middle boss, or you continue, the devil will go away.

### **NO MISS COIN UP**

If you continue to collect the coins without getting hit, you can gain scores up to 10,000 points.

### **REGAINING LIFE**

You can regain your life by getting 150,000,000 points for the first one and 300,000,000 thereafter.

## CREDITS

### **Developer:**

Alfa System Co., Ltd.; sublicensed by Kids Station Inc. and Four Winds, Inc. for XS Games

### **Producer:**

John "HB" Suarez

### **Associate Producer:**

Santos Gonzalez

### **QA:**

Tamara Carrion  
Rene Zelada  
Winter Catlin  
Derryl Newman  
Jason Last

### **Package Design:**

Moore Design Group

## WARRANTY

**LIMITED WARRANTY** - XS Games warrants to the original purchaser of this software product, for a period of ninety (90) days from the date of original purchase (the "Warranty period"), that under normal use, this medium on which this computer program is recorded is free from defects in materials and workmanship. This software program is sold "as is" without express or implied warranty of any kind and XS Games is not liable for any losses or damages of any kind resulting from use of this program. This warranty is not applicable to normal wear and tear. This warranty shall not be applicable and shall be void if the defect in this software product has arisen through abuse, unreasonable use, mistreatment or neglect.

**WARRANTY CLAIMS** - To make a warranty claim under this limited warranty, please return the product to the point of purchase accompanied by proof of purchase, your name, your return address, and a statement of the defect, or send the disk(s) within 90 days of purchase to: XS Games, 8800 Global Way, West Chester, OH 45069. Include a copy of the dated purchase receipt, your name, your return address, and a statement of the defect. XS GAMES or its authorized dealer will, at our option, repair or replace the product and return it to you (postage prepaid) or issue to you a credit equal to the purchase price.

To replace defective media after the 90-day warranty period has expired, send the original disk(s) to XS Games at the above address with a check or money order for \$15.00.

The foregoing states the purchaser's sole and exclusive remedy for any breach of warranty with respect to the software product.

**LIMITATIONS** - This warranty is in lieu of all other warranties and no other representations or claims of any nature shall be binding on or obligate XS Games. Any implied warranties applicable to this software product, including warranties of merchantability and fitness for a particular purpose, are limited to the ninety (90) day period described above. In no event will XS Games be liable for any special, incidental, or consequential damages resulting from possession, use, or malfunction of this XS Games software product.

Some states do not allow limitations as to how long an implied warranty lasts and/or exclusions or limitations of incidental or consequential damages so the above limitations and/or exclusions may not apply to you. This warranty gives you specific rights, and you may also have other rights which vary from state to state.

**NOTICE** - XS Games reserves the right to make improvements in the product described in this manual at any time and without notice. This manual and the software described in this manual are copyrighted. All rights are reserved. No part of this manual or the described software may be copied, reproduced, translated, or reduced to any electronic medium or machine-readable form without the prior written consent of XS Games, 8800 Global Way, West Chester, OH 45069, ATT: GAME MANAGEMENT.