



# BOBBY IS GOING HOME™

## INSTRUCTIONS



# BOBBY IS GOING HOME™

---

Leaping, leaping and leaping! Always happy, always cheerful in little Bobby colored world. Let not the rolling stones and naughty ponds bother you; keep away from those troublesome birds and chickens. Let not the butterfly and ugly bat annoy you; even that extremely tricky bridge can't stop you. Why not walk along the river side to enjoy the green field and blue sky. In the song of joy, we shall help little Bobby to go home.

---

## 1. PREPARING

- Follow manufacturer's instruction to hook up your video game system.
- Connect your controller with the console. Hold the controller with the red-button at upper left while playing.
- Turn power off, plug in your cartridge.

## 2. To begin play

Turn power on and press RESET switch; the picture appears on the screen. Guide little Bobby to go forward or backward by pulling your joystick to right or left.

Push red-button on Joystick Controller to jump Bobby over the obstacles he confronts.

## 3. Progressing

- This game is going on by 256 scenes.
- Little Bobby must walk through 7 scenes before he arrives his home. Here are the hindrances on Bobby's way:

Scene1. rock, broken bridge

Scene2. ponds, hawk, fountain

Scene3. pacing chickens, butterfly

Scene4. rose bush, ugly bat, tricky holes

Scene5. magic bridge, fence

Scene6. traps, spring of water

Scene7. rolling stones, hawk

- These hindrances will appear at random with various colors in different scenes.
- Scene8. Little Bobby arrives his home.
- After the lovely song "HOME, SWEET HOME" for him, little Bobby starts his journey again.

#### 4. **Scoring**

At the start, you own 3,000 points which will be added as follows while you progress through the game:

Walk through a scene      1,000 points

Bobby fails and starts again 1,000 points for encouragement

In case Bobby failed 5 times, the game would be over.

Yet, on the way don't be hesitant for long: the points is decreasing progressively by 10 points per second.

#### 5. **Difficulty Switch**

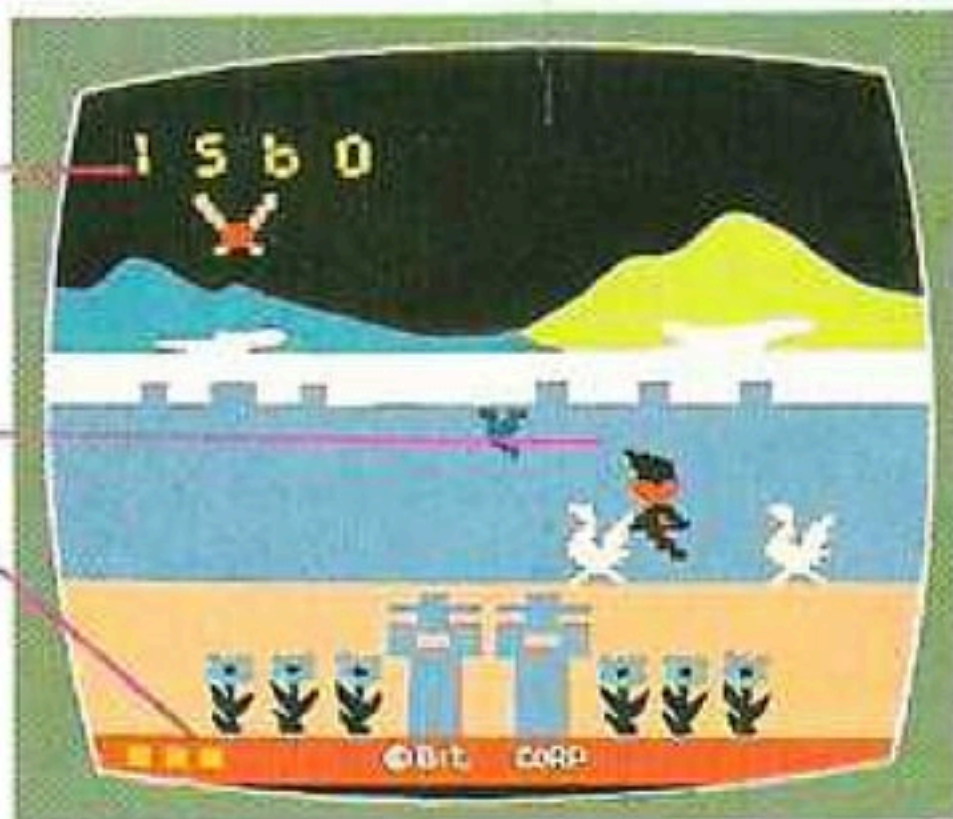
Difficult switch has no effect on "BOBBY IS GOING HOME"

#### 6. **Start over the game**

Press "RESET" to start over the game.

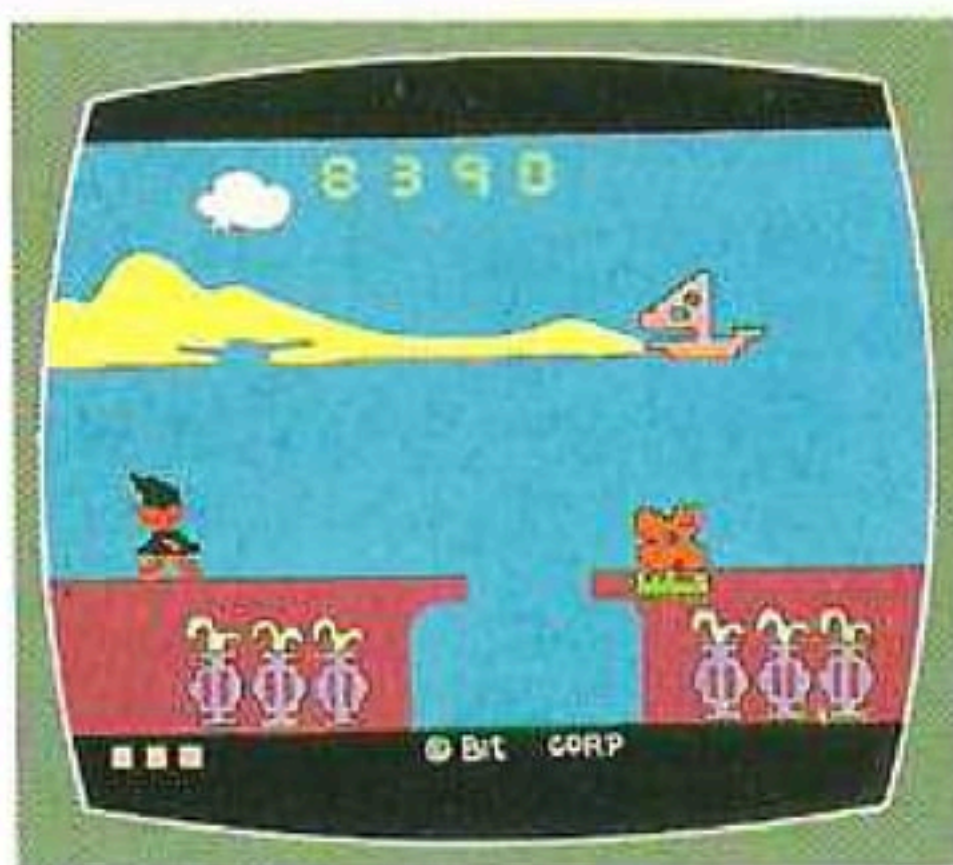
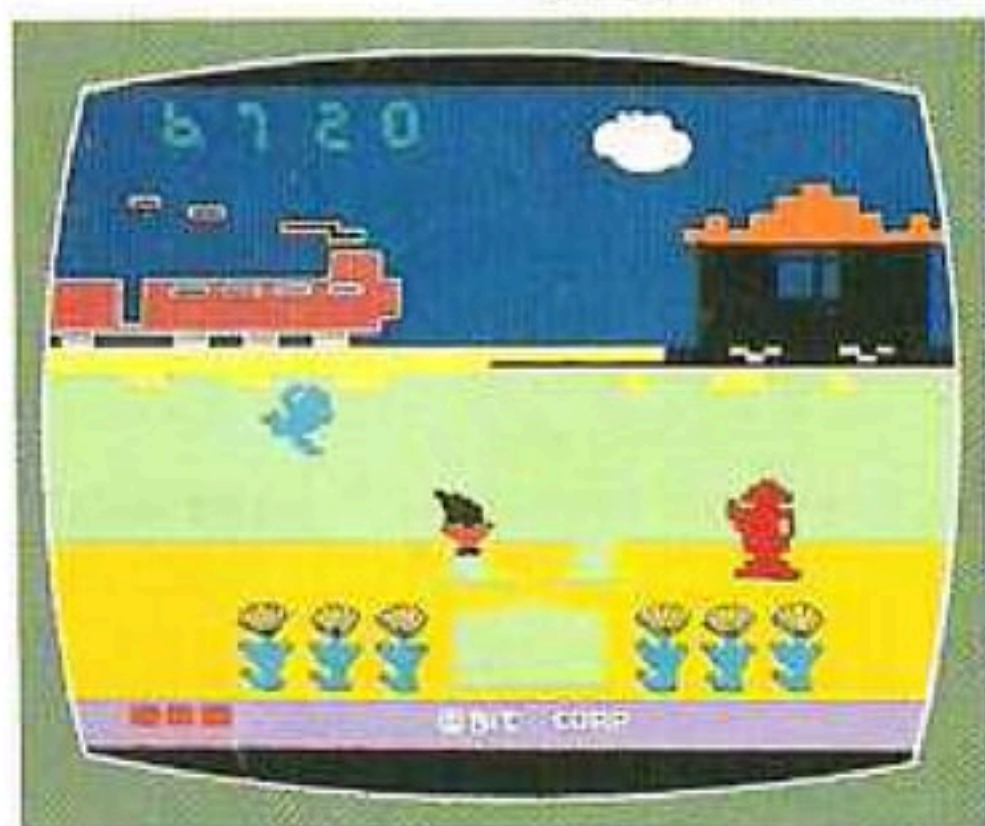
This game is played by one player.

SCORE



BOBBY

RESERVE BOBBY



BOBBY'S HOME

