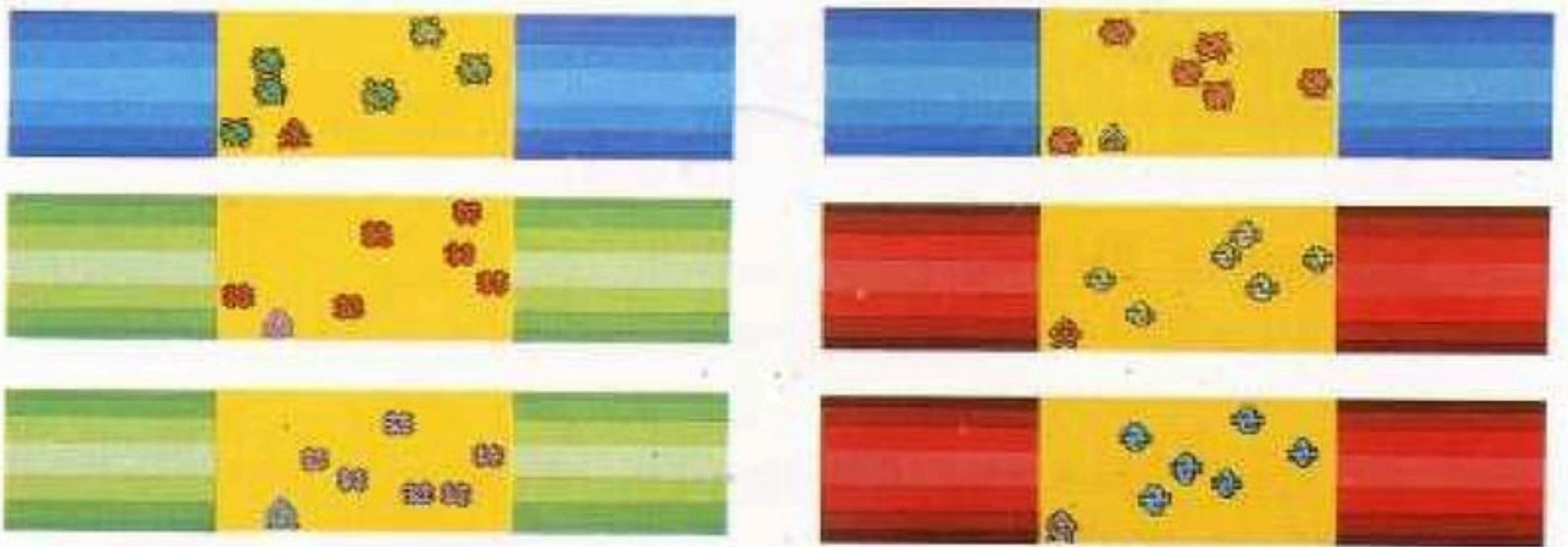
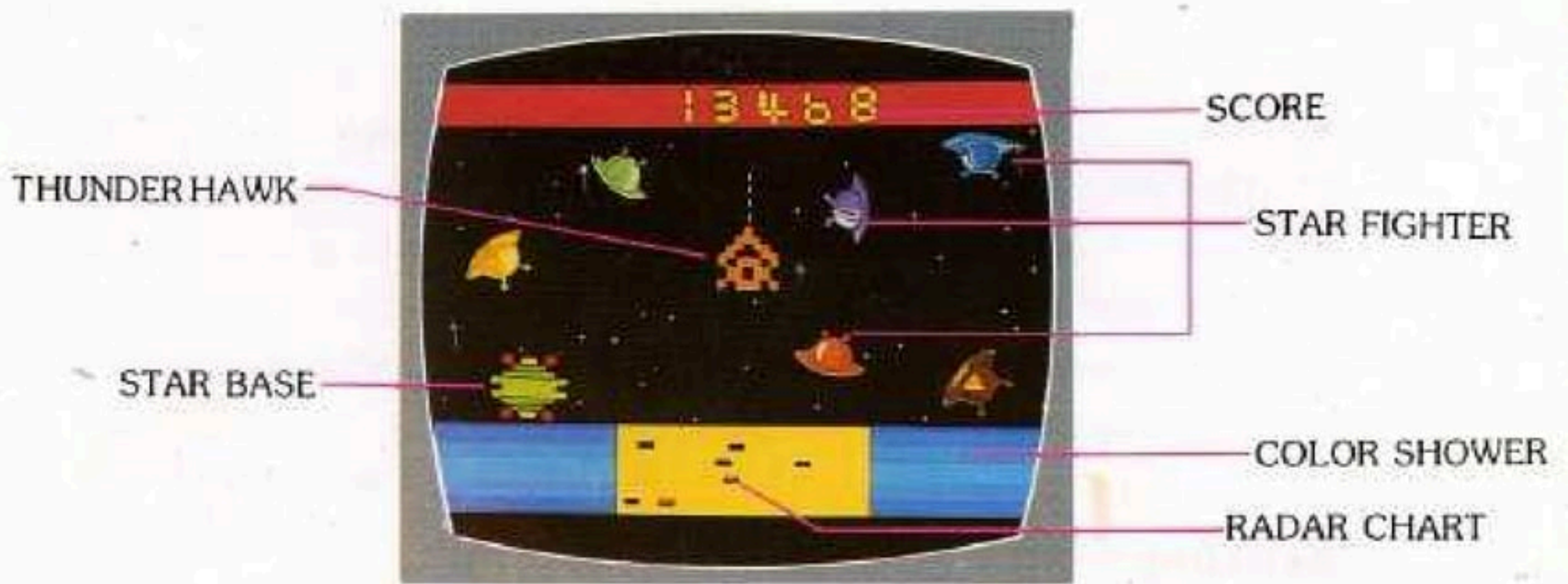




# MISSION 3,000 A.D.™

## INSTRUCTIONS





©1983 BIT CORPORATION. PG207.

# MISSION 3,000 A.D.™

---

Deep within the galaxy hide the starbases of unfriendly G.T. planet. Command your THUNDERHAWK to seek out the devilish peace-breaker: this is going to be a hard mission of firm courage!

In your effort to find out the targets, waves of the starfighters would come out to hit you. Your Radar chart helps to point out the position of the starbases and color shower reveals the attacking speed of the starfighters. Look out! Be keen with both of your hand and brain. Never take your eyes away!

---

## 1. **Preparing**

- Follow Manufacturer's instruction to hook up your video game system.
- Connect your controller with the console. Hold the controller with the red-button at upper left while playing.
- Turn power off. plug in your cartridge.

## 2. **To begin play**

Turn power on and press RESET switch. on the screen are your THUNDERHAWK and one of the starbases.

Armed yourself with full attention: command your THUNDERHAWK (6 you own) and push the red-button to fire in 8 directions.

## 3. **Rader Chart**

The Radar chart on the lower side of the screen points out the position of the Starbases. You trace to destroy them accordingly. Altogether there are six manners in this game and every manner includes six starbases.

## 4. **Attacking Speed**

The color shower on the two sides of the Radar chart indicates the attacking speed of the starfighters.

## COLOR SHOWER

Green

Blue

Red

## SPEED

Normal

Fast accompanies with intermittent sound

Emergent accompanies with continuous sound

## 5. Starbase

The starbases appear in three colors:

1 & 4 arrangement	Grey
2 & 5 arrangement	Yellow
3 & 6 arrangement	Orange

## 6. Scoring

Defeat a starfighter	100 points
Destroy a starbase	500 points
Destroy 6 starbases	award one more THUNDERHAWK

## 7. Difficulty Switch

Press the switch to EXPERT position, the attacking speed of the starfighters would become faster.

## 8. Start over the game

- Turn power on and press RESET switch, you can always start from the first arrangement.
- Yet, when you progress through the game, you may push SELECT switch first then RESET switch to start from the first arrangement or just push RESET switch to begin from the arrangement you were in.