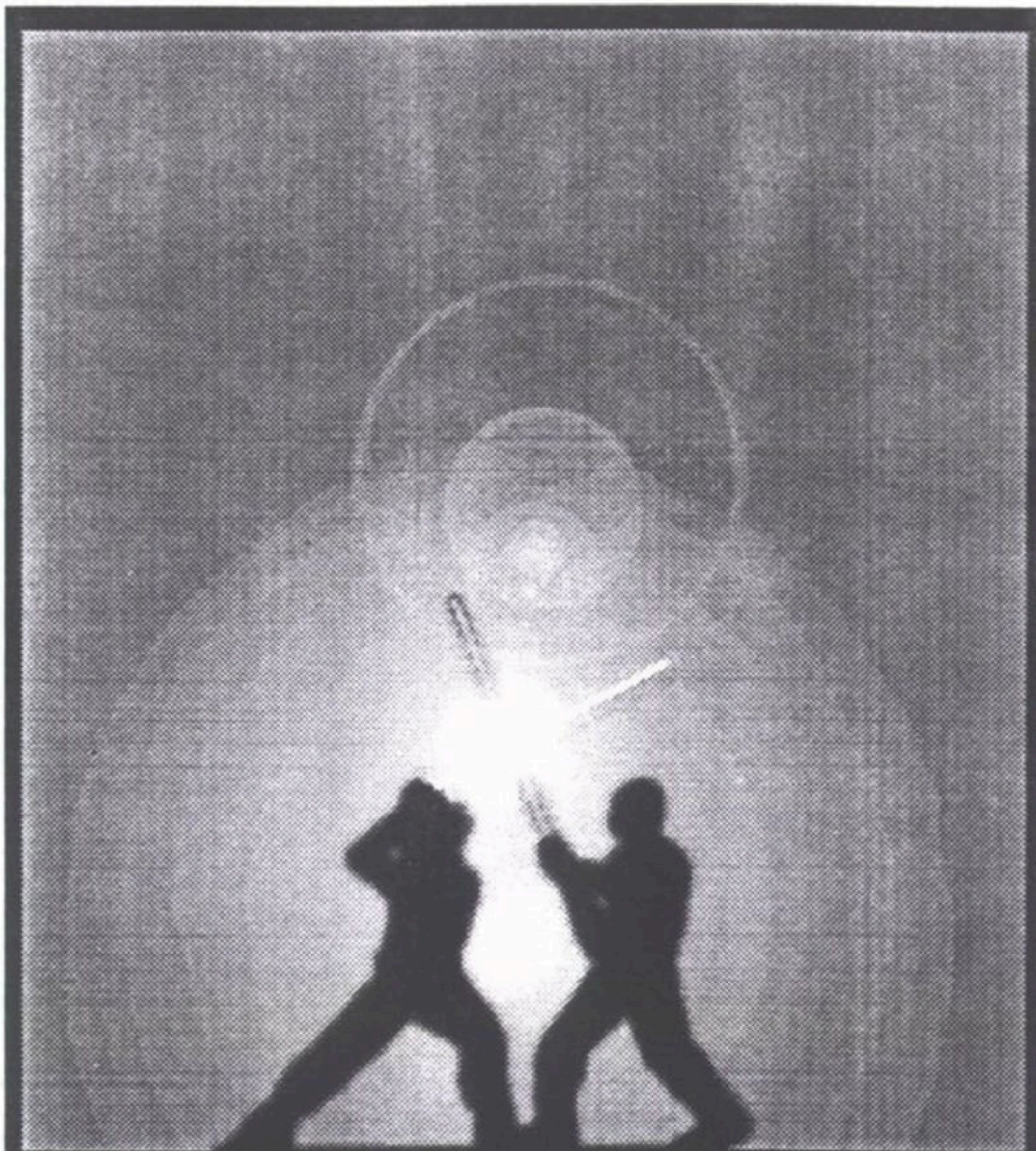


Retrotopia™

For ATARI 2600



SWORDFIGHT

FOR TWO PLAYERS

SWORDFIGHT

Two knights face each other at the edge of the universe. Gripping their laser swords, they advance, prepared to fight to the death...

STARTING THE GAME

Hold controllers so RED BUTTON is to upper left. Press RESET. (Difficulty switches have no effect on game.)

Each fighter draws sword by pressing RED BUTTON. Once both swords are drawn, the battle begins!

CONTROLS

You have three offensive swings and three defensive blocks controlled by the joystick (see diagram). Advance and retreat by pressing the RED BUTTON.

HITS

At beginning of game, each fighter stands on four energy platforms. With every three hits to a fighter, one of that fighter's energy platforms disappears.

END OF GAME

After 12 hits, fighter fades away. Other fighter is victorious!

Press RESET to play again.

OFFENSE



LEFT SWING



OVERHEAD
SWING



RIGHT SWING

DEFENSE



LEFT BLOCK



OVERHEAD
BLOCK

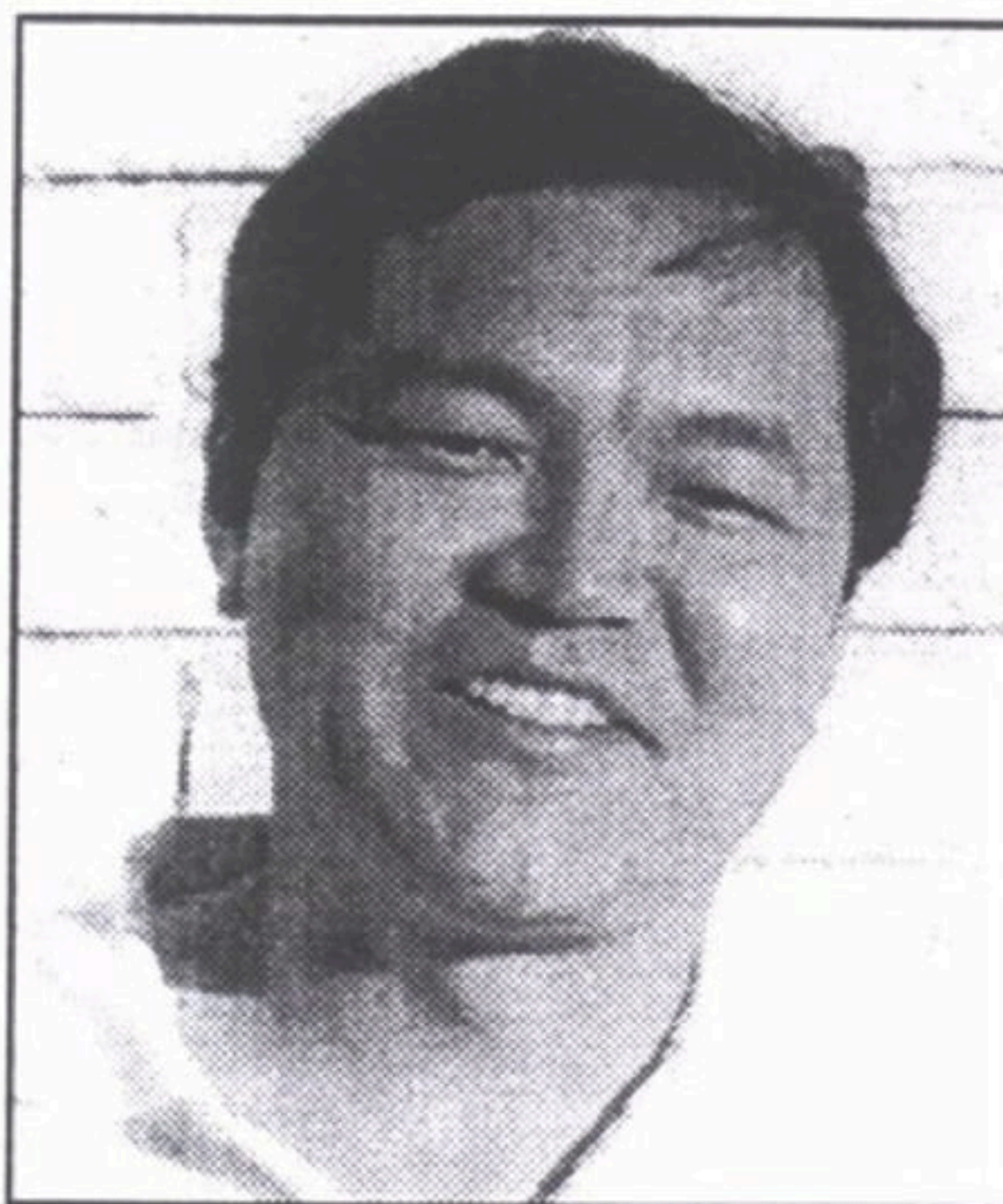


RIGHT BLOCK

Advance and retreat by pressing RED BUTTON

DEVELOPMENT HISTORY

Stephen Tatsumi, designer of **Swordfight**, was one of the world-famous **Blue Sky Rangers**—the video game programmers for **Mattel Electronics**. Best known for **Intellivision**, the **Blue Sky Rangers** also designed games for **Atari 2600**; **ColecoVision**, **IBM PC**, **Apple II** and the **Aquarius Computer System**.



Steve designed and programmed **Kool-Aid Man**, released in 1983, for the Atari 2600. He also designed and started several other original Atari 2600 games. One of these, **Swordfight**, he was able to take through to completion.

Swordfight was inspired by Steve's dissatisfaction with another Atari swordfighting game. Its characters were too small for the player to get any feel of the combat. Steve set out to create a battle with large characters where the joystick could be wielded like a sword.

(continued)

DEVELOPMENT HISTORY

(continued)

As Steve developed the game, he and **Ron Surratt**, manager of the Atari 2600 group, spent hours playing it. Steve used these bouts to fine tune the controls.

The results were deceptively simple—three offensive swings and three blocks. But once players got familiar with the moves, long and challenging battles were possible. Many Blue Sky Rangers became fans of the game.

Despite this, Mattel Electronics did not release it.

Swordfight had several marketing strikes against it: it required two players, it was not based on a famous movie or arcade game and there was no Intellivision version. The game was shelved.

Now this lost classic is available for the first time. The **Swordfight** Atari 2600 cartridge is manufactured using the unmodified game file that Steve Tatsumi completed in 1983.

Finally, Atari 2600 gamers can draw their swords and prepare to fight!

SWORDFIGHT CONTROLS

OFFENSE



LEFT SWING



OVERHEAD
SWING



RIGHT SWING

DEFENSE



LEFT BLOCK



OVERHEAD
BLOCK



RIGHT BLOCK

Advance and retreat by pressing **RED BUTTON**

LICENSE AGREEMENT

Using this software means you agree to the terms of this agreement.

This software, instructions, and all included images, sound, video, multimedia and other material (collectively, the "material") licensed to you under this agreement are copyrighted with all rights reserved. Under copyright law, it is illegal to make or distribute copies of this software in whole or in part without prior written consent of Intellivision Productions, Inc. Duplication of this software for any reason including for sale, loan, rental or gift is a federal crime punishable by fines up to \$50,000 and imprisonment up to 5 years. All of the original material may be sold by you to another person in a single transaction which includes all of the material. You may not reverse engineer, decompile or disassemble any of the software included in the material.

WARRANTY

Limited Warranty. Intellivision Productions, Inc. warrants that the software included with the material will perform substantially as described in the material when used with an Atari 2600 Video Computer System. This warranty and any implied warranties on any of the material is limited to 90 days from the date of receipt of the material by you. Some jurisdictions do not permit limitations on the duration of implied warranties, so these limitations may not apply to you.

Disclaimer of Warranty. Except for the limited warranty given above, the material is provided "as is" and without warranty of any kind, and Intellivision Productions, Inc. expressly disclaims all implied warranties, including but not limited to any implied warranties of merchantability and fitness for a particular purpose. Intellivision Productions, Inc. does not warrant, guarantee or make any representations regarding the use or the results of the use of the material in terms of correctness, completeness, accuracy, reliability, currentness or otherwise. The entire risk as to the results and performance of the material is assumed by you. Some jurisdictions do not permit the exclusion of implied warranties, so these limitations may not apply to you.

Limitation of Liability. In no event will Intellivision Productions, Inc., its developers, suppliers, directors, officers, employees or agents (collectively "Intellivision") be liable to you for any consequential, incidental, or indirect damages (including damages for loss of business profits, business interruption, loss of business information and the like) arising out of the use or inability to use the material, even if Intellivision has been advised of the possibility of such damages. Some jurisdictions do not permit the exclusion or limitation of liability for consequential or incidental damages, so these limitations may not apply to you. Intellivision's liability to you for actual damages for any cause whatsoever, and regardless of the form of action (whether in contract, tort [including negligence], product liability or otherwise), shall be, at our option, either (a) the return to you of the price you paid for the materials or (b) the replacement of the software which does not meet the limited warranty or any implied warranty and which is returned to Intellivision Productions, Inc. with a copy of your receipt.



Dedicated to the history of video games because we were there.

SWORDFIGHT

Designed and Programmed by
STEPHEN TATSUMI

Sound Effects by **PAT LEWIS**

Technical Engineer **SEAN KELLY**

Associate Producer **LISA M. DAWSON**

Package Artwork by **KEITH ROBINSON**

Special thanks to **DALE LYNN**

Game ©1983, 2000 Intellivision Productions, Inc.

Instructions & package artwork ©2000 Intellivision Productions, Inc.

All rights reserved. **Retrotopia** and **Intellivision** are trademarks of **Intellivision Productions, Inc.** All other trademarks are the property of their respective owners. Software in the **Swordfight** cartridge may not be copied, uploaded, disassembled or distributed, whether by Internet or other means. To do so may result in criminal or civil penalties. Use of this cartridge means you have read and agree to the terms of the software license included with the packaging. **Manufactured in USA.**

RETROTOPIA

Intellivision Productions, Inc.

Post Office Box 743

Redondo Beach, California 90277

www.retrotopia.com