



Ready, Set, Go!

Speed into the Sprint Master hall of fame! Choose your track, from practice-caliber squares to the curvaceous championship courses. Rev up at the starting line, and take off!

Keep a good grip on the controls. You'll need a delicate touch and a cool head to avoid sliding into the wall on those arcing curves.

Watch your time. Take advantage of the bonus speed and traction boxes at the necessary moments. Grab the lead on the first lap, or let your challenger outpace you and then make him eat dust in the final laps.

Outpace an opponent, or go at it again to beat your own time. Sprint to the finish and win!

Getting Started

1. With your Atari 2600 or 7800 set up, insert the Sprint Master cartridge into the console.
2. Use the left difficulty switch on your console to change your steering. Move the switch to the "A" or left position for more difficult control (less traction). Move it to the "B" or right position for easier control (more traction).

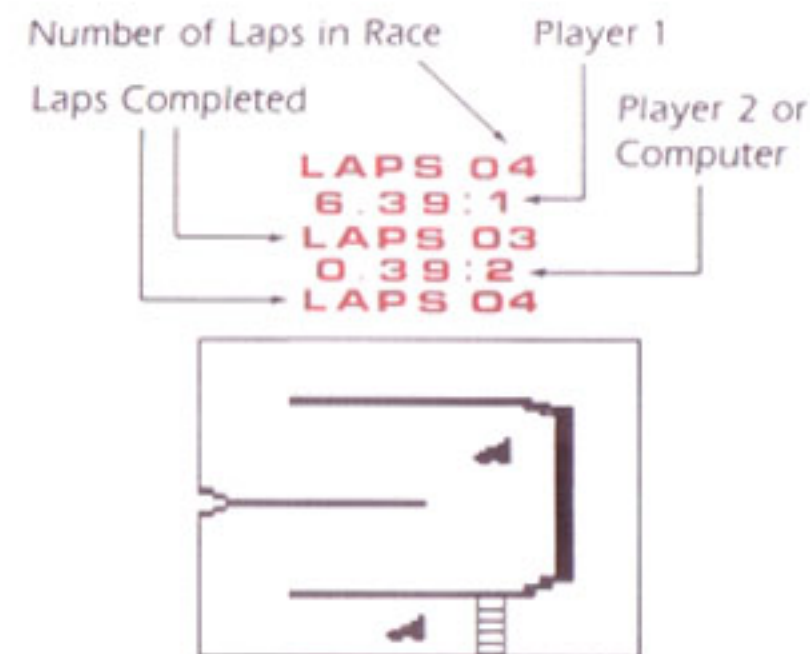
3. Plug a joystick into the left controller port for one player. Plug a second joystick into the right controller port for two players.
4. Turn on your television or monitor and press the **[Power]** key to turn on your console. The Sprint Master title screen appears.
5. Press **[Select]** or push the joystick handle in any direction to choose a one-player or two-player game. (In a one-player game, you race against the computer.) When the choice you want is flashing, press **[Reset]** or the joystick button. Then do the same to choose whether the cars will bounce or crash when they collide with something and how many laps (up to 50) the cars will run.
6. Press **[Reset]** or the joystick button to get to the raceway. The currently selected track appears, with a grid of all track selections above it.
7. Press **[Select]** or push the joystick handle in any direction to see each track selection. When the track you want is on screen, press **[Reset]** or the joystick button.

8. Press **[Select]** or push the joystick handle in any direction to choose a blacktop, dirt, or ice track.
9. Press **[Reset]** or the joystick button to begin.

Playing the Game

Both cars are positioned at the starting line. Then it's ready, set, go! Accelerate with your joystick button and steer with your joystick handle. Push the handle left or right to turn in that direction. Pull the handle back for an emergency brake. Release the joystick button to slow down.

Laps and times appear at the top of the screen.



Drive over the blue box on the track to gain traction. Drive over the red box for a spurt of speed. Hitting an unpredictable tar slick makes you speed up or slow down. Colliding into a wall costs you time, so move back into position and get going! The race car that completes the required laps in the fastest time wins!

After a game, press **[Reset]** or player 1's joystick button to run the same race again. Press **[Select]** or move player 1's joystick handle in any direction to return to the title screen.

Racing Tips

Pick up momentum in the straightaways. Keep to the inside track on curves.

On blacktop, make for the red boxes to gain as much speed as you can.

On ice, head for the blue boxes for extra traction.

Stay on the track. You can take shortcuts across the grass, but you may bump into invisible barriers and lose valuable time.

Watch the track. Some tracks have barriers that appear and disappear and could cost you time. You can also use these gates for shortcuts, but you need to make sure you get through before the gate closes.



Atari Corporation is unable to guarantee the accuracy of printed material after the date of publication and disclaims liability for changes, errors, or omissions. Reproduction of this document or any portion of its contents is not allowed without the specific written consent of Atari Corporation.

Atari®, the Atari logo, Sprint Master™, 2600™, and 7800™ are trademarks or registered trademarks of Atari Corporation.

Copyright © 1988, Atari Corporation, Sunnyvale, CA 94086. All rights reserved.

18114 1001

Printed in Hong Kong. C300016-155 Rev. A