

ATARI[®] 2600[™]



CRAZY CLIMBER[™]



* Trademark of Nihon Bussan Co. Ltd. used by Atari, Inc. under license.

Atari welcomes your comments. Please address all correspondence to:

Atari Customer Relations
1312 Crossman Avenue
Sunnyvale, California 94086

NOTE: Always turn the console **POWER** switch **OFF** when inserting or removing an ATARI Game Program™ cartridge. This will protect the electronic components and prolong the life of your ATARI 2600™ Video Computer System™ game.

© 1983 ATARI, INC. ALL RIGHTS RESERVED

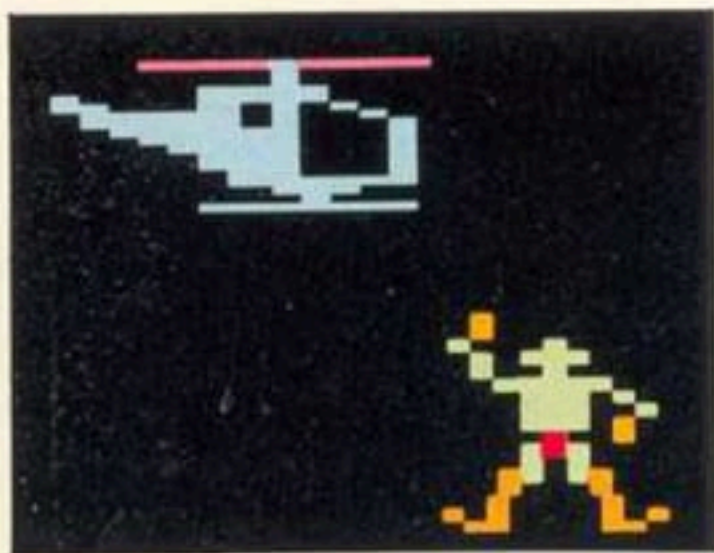


TABLE OF CONTENTS

1. NEWS FLASH!	1
2. GAME PLAY	2
3. USING THE CONTROLLERS	4
4. CONSOLE CONTROLS	5
5. GAME VARIATIONS	6
6. SCORING	6
7. HELPFUL HINTS	7
8. GAME SELECT MATRIX	8

1. NEWS FLASH!

VIDEO TIMES

HOME EDITION

25 CENTS

CLIMBER COURTS CATASTROPHE

(VIDEO CENTRAL). Police have reported an agile daredevil, nicknamed "Crazy Climber" by residents, trying to scale the tallest building in the city. Witnesses, some of whom have been taken to the hospital with kinks in their necks, say that the climber has been barraged with flower pots, buckets of water, and baskets of fruit by a madman known only as the "Mad Doctor." Residents of the building have complained of the disturbance.

"It's impossible to get any sleep around here," said one red-eyed resident.



**MAD DOCTOR
KONKS CLIMBER**

"Flower pots keep breaking against the side of the building, a lunatic keeps climbing past my living room window, and to make matters worse—a crazy bird keeps flapping



WILL HE FALL?

back and forth outside. I am going batty!"

According to highly placed city officials, the Crazy Climber has vowed to reach the top of the building against all odds. Officials, who have since inspected the building, have discovered loose hinges on many of the windows, causing

them to close on the climber's fingers. "These buildings weren't built for climbing," said one city building inspector.

Police have blocked off the street and a 24-hour watch on the climber has been posted. A helicopter is waiting at the top of the building to pick up Crazy Climber—if he makes it.

Keep reading for late-breaking details. Now, back to your regularly scheduled game play.

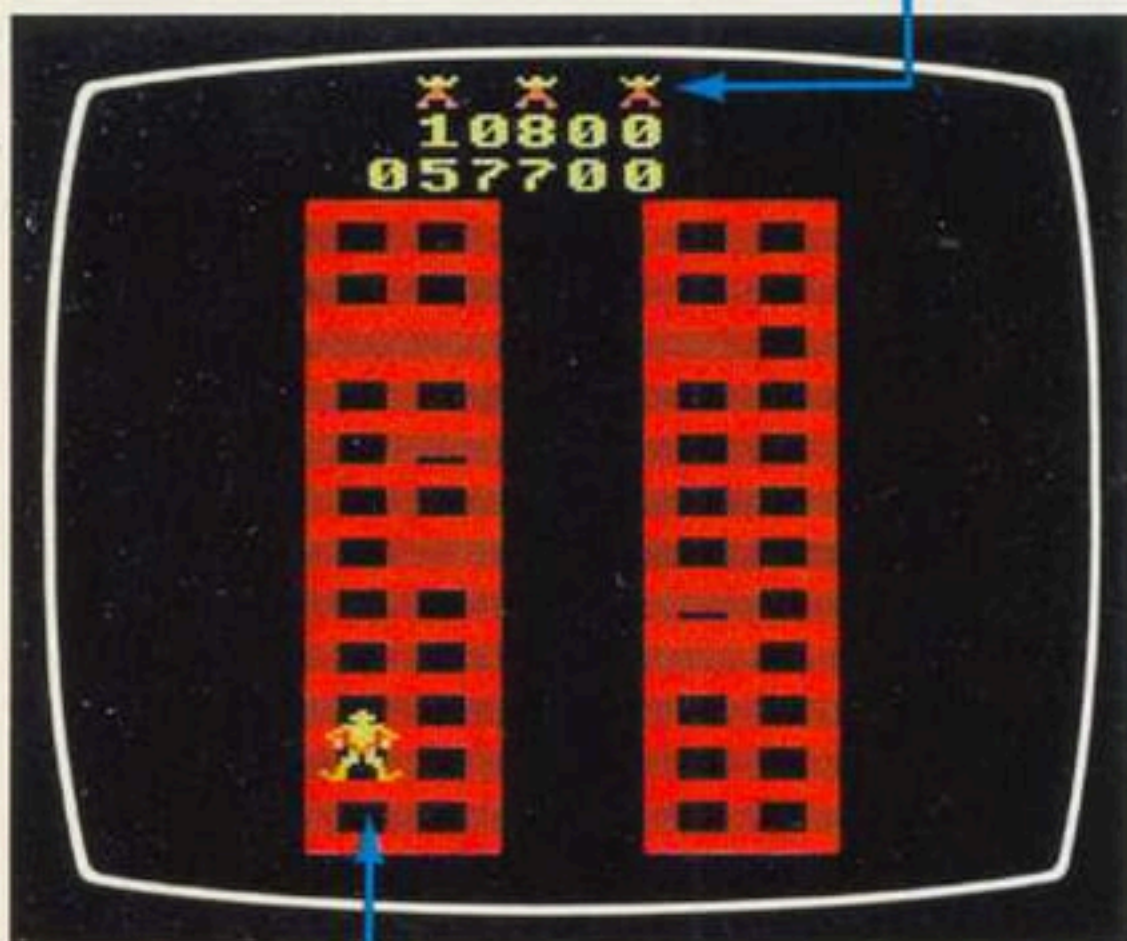


**CONDOR LAYS
LETHAL EGGS**

2. GAME PLAY

Win at CRAZY CLIMBER by climbing to the tops of four skyscrapers, while avoiding enemies and objects that can knock you off the side of the building. You can climb up, right, or left, but not down on the rows of windows. The faster and farther you climb, the more points you score. But watch out! If a window closes on your hands, or if a falling object hits you while climbing, you'll fall back to the street below.

Last Three Climbers Remaining



Crazy Climber

Figure 1 - Number of Climbers Remaining

You'll start the game with five climbers; each time one falls, another appears at the spot where the last climber fell. The last three climbers remaining are shown at the top center of your screen (see Figure 1).

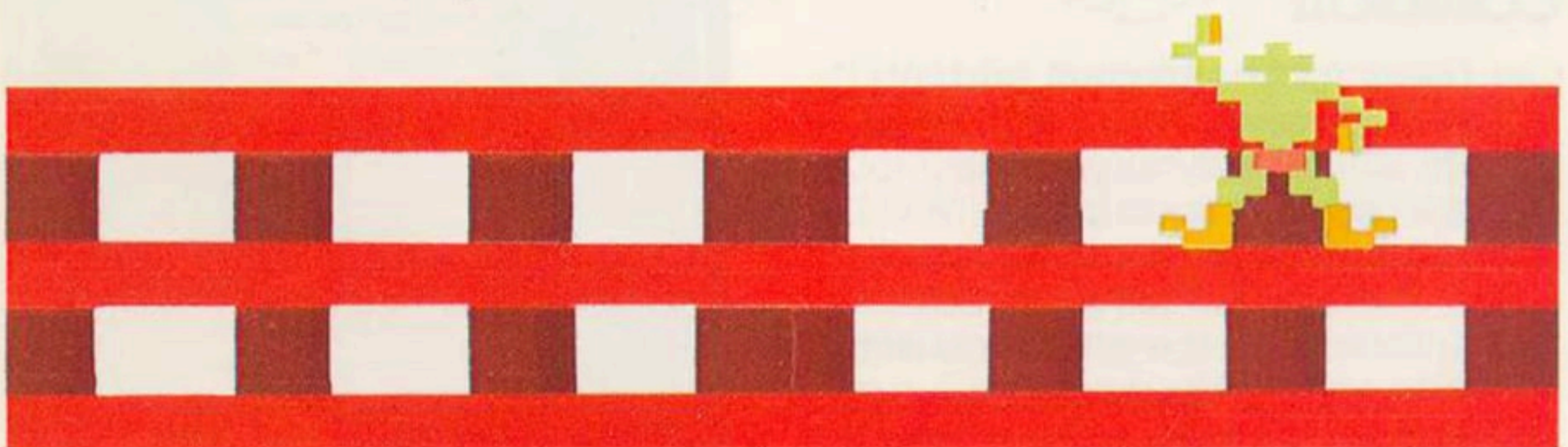
Each skyscraper is progressively more difficult to climb. Windows open and close faster, more obstacles are placed in your path, and your enemies are more unrelenting in their attacks.

You'll need sharp eyes and quick reflexes to make it past all the obstacles placed in your path. The obstacles you'll encounter are:

WINDOWS



These are an ever-present danger to you. You can climb past a window if it is even slightly open, but if it closes shut on both your hands, you'll fall. If a window closes on only one of your hands, you're safe—but only if you stay still. If you try to climb up or sideways, you'll lose your grip and fall.



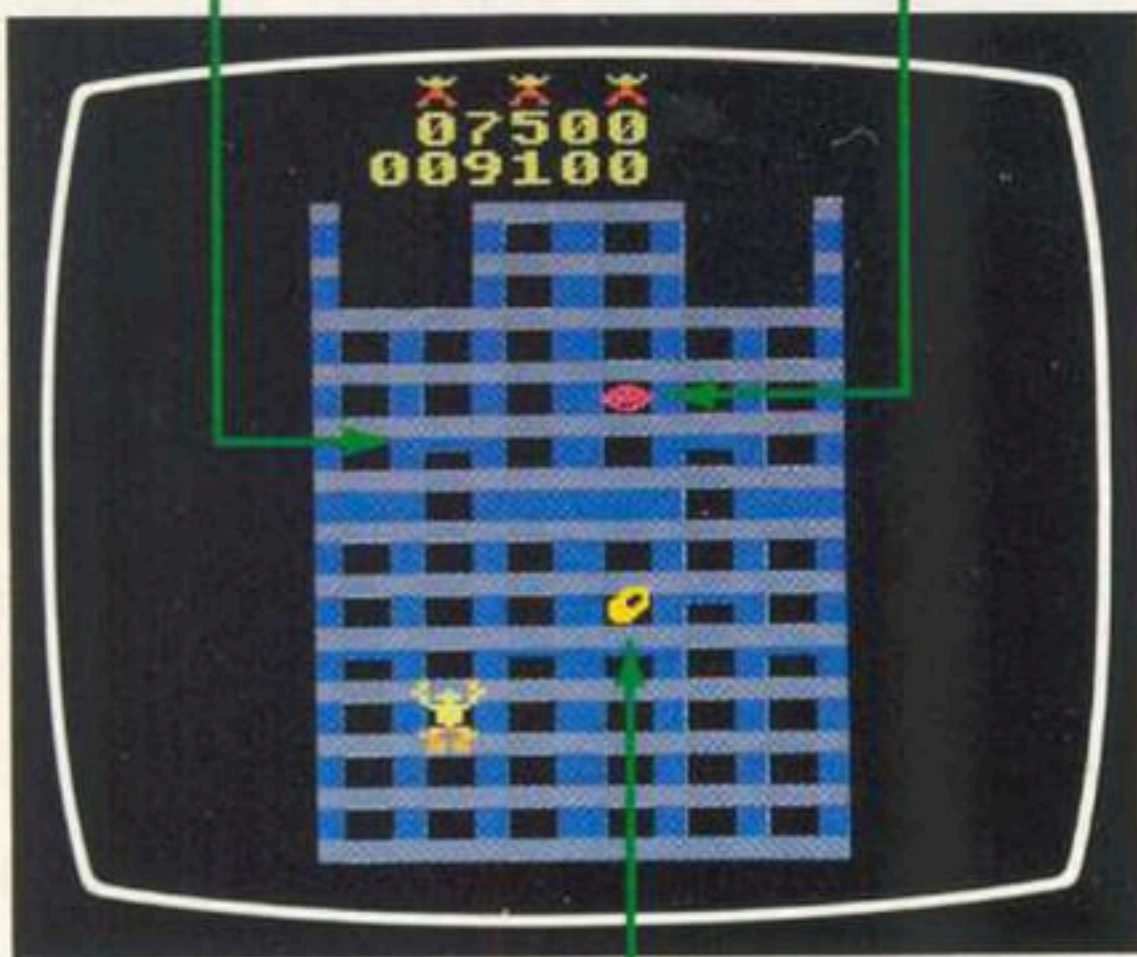
MAD DOCTOR



An arch fiend with a weird sense of humor, the Mad Doctor smiles down at you while throwing a bizarre assortment of missiles. He has three to choose from—a flowerpot, a basket of fruit, and a bucket of water. If any of these hit you while you're climbing from one window to another, you'll fall. If you have both hands firmly planted on a ledge, however, you'll be safe. The obstacle will simply bounce off your head. Whether you fall or not, you'll lose 100 bonus points each time you're hit by one of the Mad Doctor's deadly toys.

Closing Window

Mad Doctor



Basket of Fruit

CONDOR

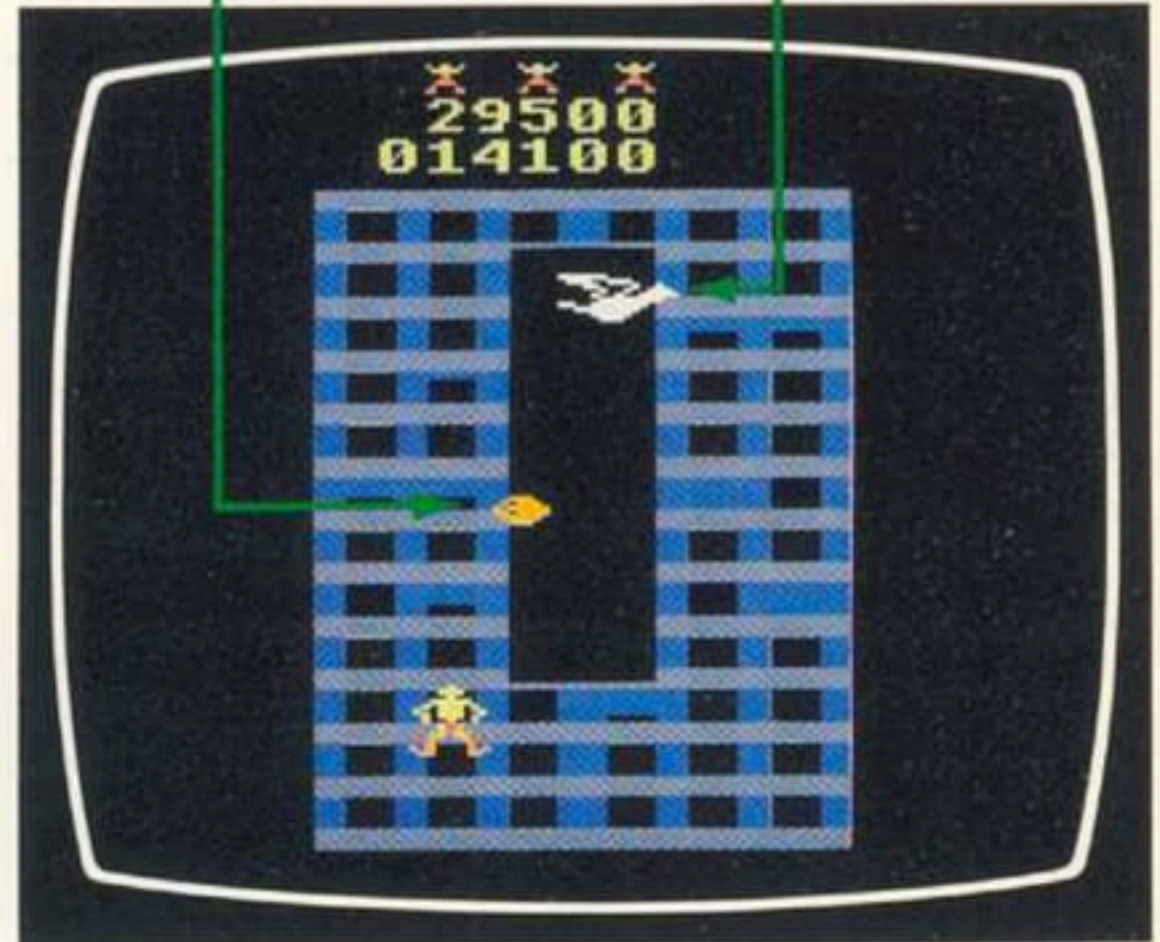


Get ready for the biggest bird you've ever seen! This snow-white condor will divebomb you with gigantic eggs. If your arms are straight and firmly planted on a ledge, the egg will simply break and splatter into the air. If you are climbing to another window, however, it will knock you off the

ledge. You will lose 100 points if an egg touches you, so avoid them if you can.

Egg

Condor

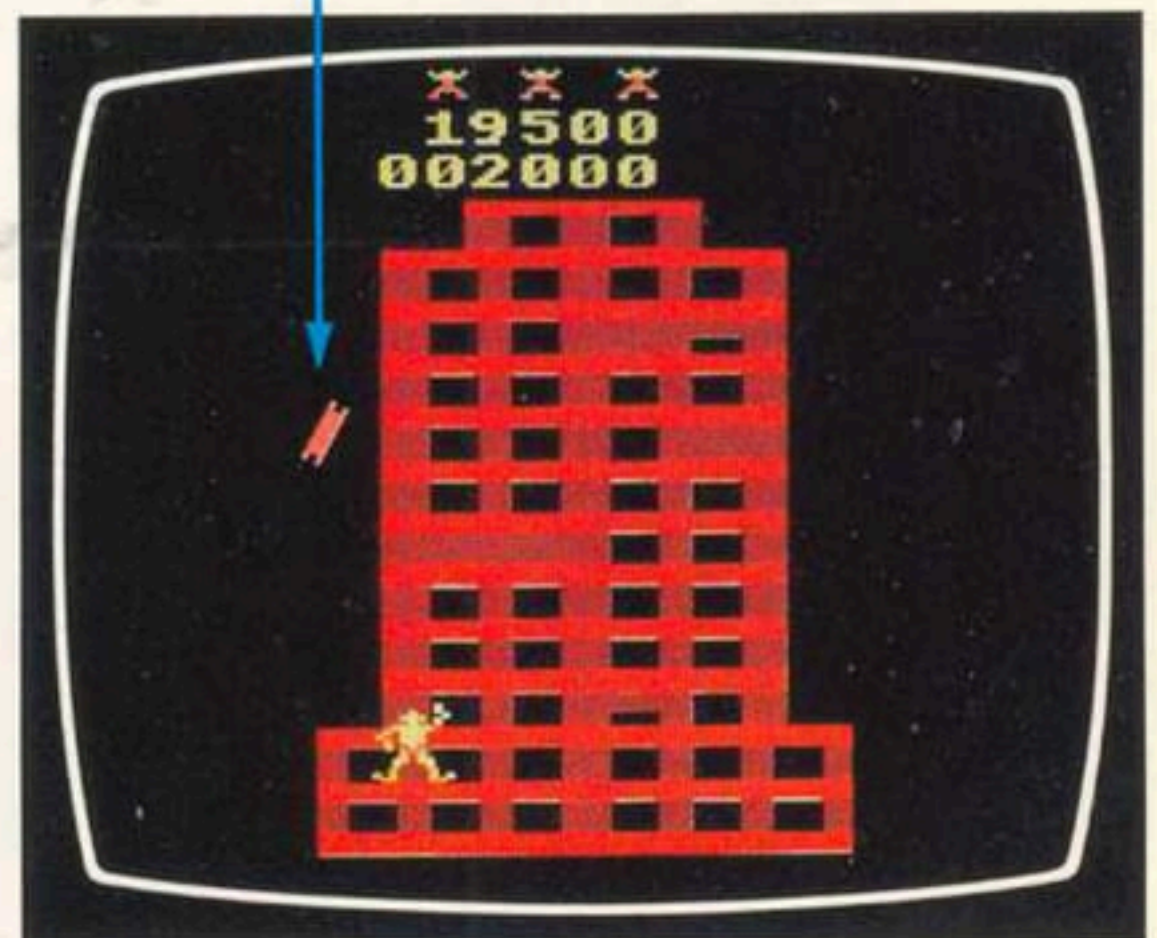


GIRDERS



A shower of steel girders greets you as you climb some of the buildings. Nothing can stop a girder from sweeping you off the side of a building—avoid them at all costs. If a girder touches you, you'll not only fall, but you'll also lose 100 bonus points.

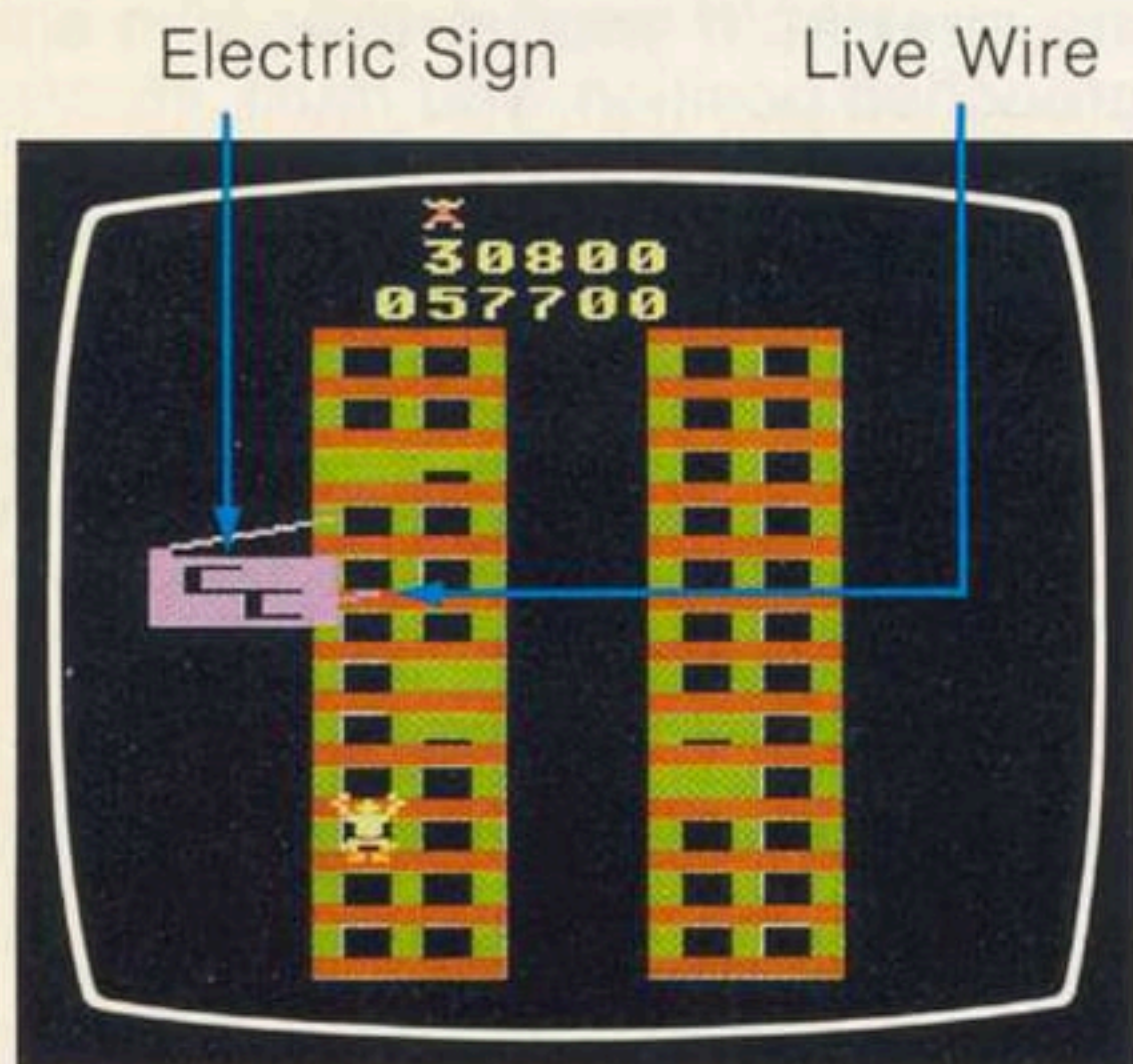
Girder



ELECTRIC SIGN



An electric sign sometimes appears where a building narrows down to two rows of windows. A flopping live wire hangs off the side of the sign. As you climb past, the wire will shock you. For each electric shock you receive, you lose 100 bonus points; 11 shocks and you'll fall off the building. Try to climb past the sign as fast as you can.



REACHING THE TOP



Each time you reach the top of a building, a helicopter appears and will take you to a new building.

Hurry! You only have 30 seconds to grab the runner of the helicopter. Your bonus points tick off while the helicopter is searching for you, so the faster you grab the runner, the more bonus points you'll keep.

Helicopter Runner Rooftop

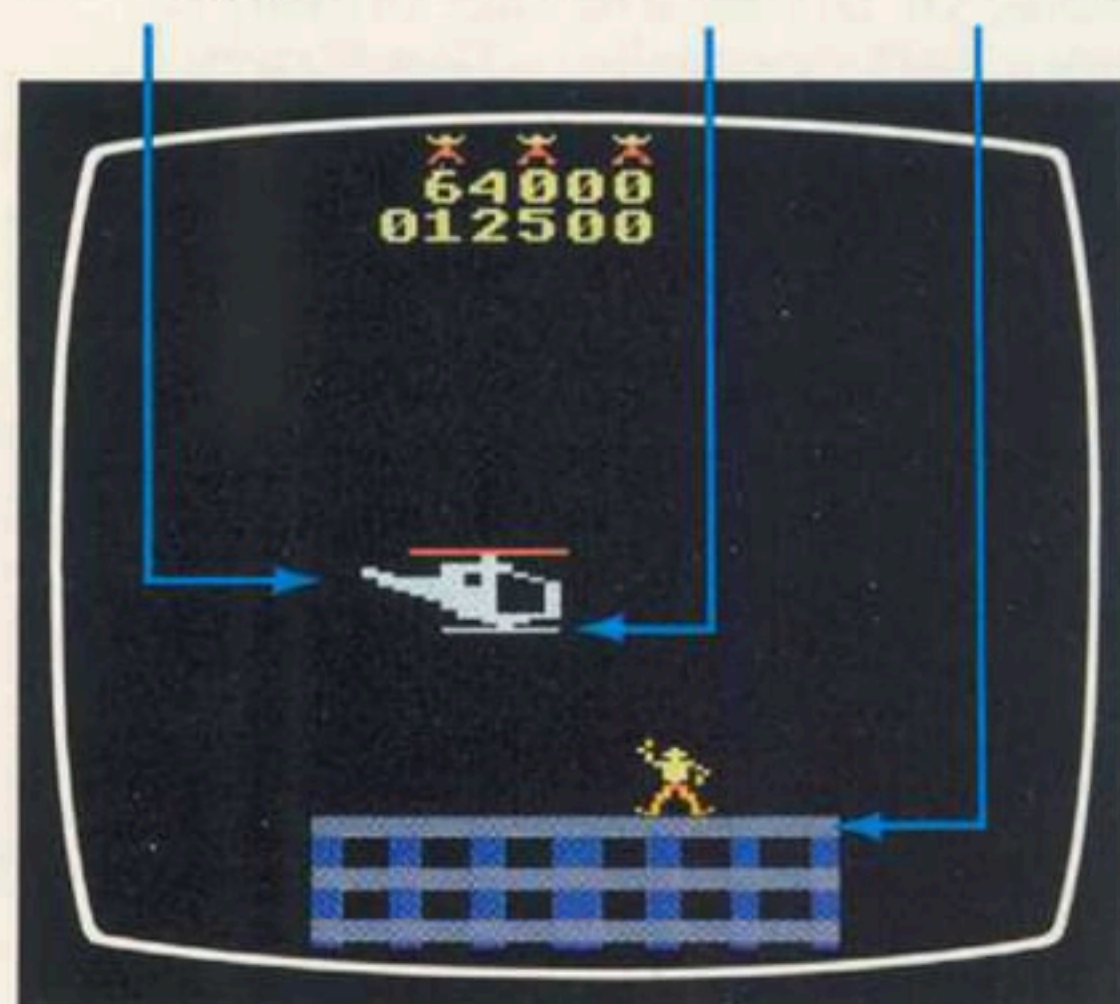
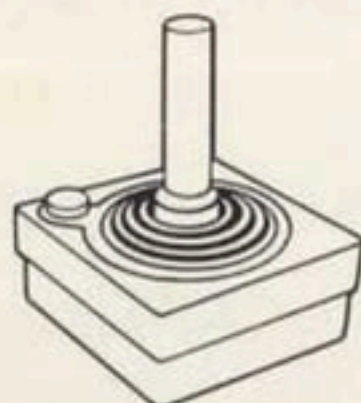


Figure 2—Reaching for the Helicopter

After you've reached the top of Building 4, you'll be transported back to Building 1. Keep climbing! You'll continue to score points until you use all your climbers.

3. USING THE CONTROLLERS



Use your Joystick Controller with this ATARI Game Program car-

tridge. Be sure the controller cables are firmly plugged into the jacks at the back of your ATARI 2600™ Video Computer System™ game. Hold your Joystick with the red button to your upper left, toward the television screen. (See your Owner's Manual for further details.)

STARTING THE GAME

Select the game variation you want to play by using the **GAME SELECT** switch on your console, or by pulling back on your left Joystick. You can start the game two different ways: Press the **GAME RESET** switch on your console, or press the red button on your left controller. The Crazy Climber theme will then play; when it's over, you'll be ready to go!

MOVING YOUR CLIMBER

Climbing up a building requires a two-part movement: First push the Joystick forward to move the

climber's arms up; then pull the Joystick back to move the climber up to a new ledge. To climb quickly, move the Joystick back and forth, using a fast rocking motion.

To move your climber sideways, push the Joystick either left or right. Your climber will scurry across the building in the same direction you move your Joystick. However, you can only move your climber sideways when his arms are straight. If your climber is in a crouched position, you must straighten his arms out before he can move right or left.

4. CONSOLE CONTROLS

GAME RESET SWITCH

Press **GAME RESET** to start the game, or to restart the game in the middle of game play. The Crazy Climber theme will play; when it stops you can move your climber. Good luck!

GAME SELECT SWITCH

Use **GAME SELECT** to pick the game variation you would like to play. The game variation appears at the upper left of your screen (see **Figure 3**). Continue pressing the switch to cycle through the game variations. Pulling back on the left Joystick has the same function as pressing the **GAME SELECT** switch.

TV TYPE SWITCH

Set this switch to **COLOR** if you're playing on a color TV. Set it to **B-W** to play the game on a black and white TV

DIFFICULTY SWITCHES

If you set your **DIFFICULTY SWITCH** to the **A** position, your climber moves slowly and will have a hard time grasping ledges. If you

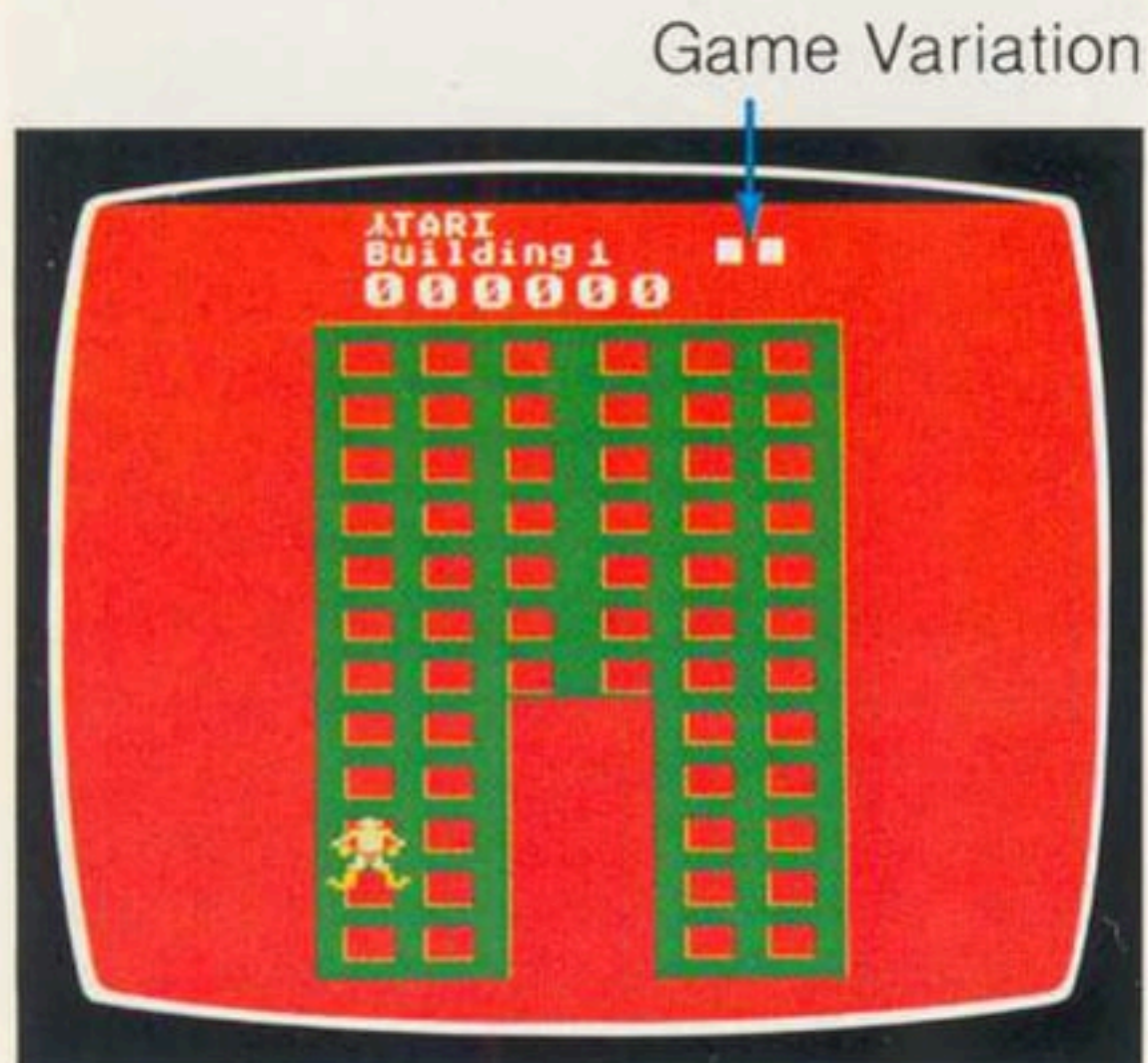


Figure 3—Selecting a Game

set your difficulty switch to the **B** position, your climber moves faster. The **LEFT DIFFICULTY** switch affects the climber con-

trolled by the left Joystick; the **RIGHT DIFFICULTY** switch affects the climber controlled by the right Joystick.

5. GAME VARIATIONS

CRAZY CLIMBER contains ten different game variations. Five of the variations are one-player games; the other five are two-player games.

You have the option of starting a game on one of four different buildings. Use the Building 1 variation to start climbing on Building 1, the Building 2 variation to start climbing on Building 2, and so on.

Use the **NOVICE** variations to learn how to play CRAZY CLIMBER. In the **NOVICE** mode you cannot fall off a building unless a window shuts on your hands, or unless an electric sign shocks you more than eleven times. You always start climbing on Building 1 in the **NOVICE** game variations. (See *Section 7—GAME SELECT MATRIX*, for a quick reference to game variations.)

6. SCORING

You score points in CRAZY CLIMBER two ways: by earning climbing points for each row of windows you climb up; and by earning bonus points when you reach the top of each skyscraper.

The value of your climbing points depends on the building you climb:

Building 1	100 points/row
Building 2	200 points/row
Building 3	300 points/row
Building 4	400 points/row

Bonus points are like a timer—they measure the speed at which you climb a building. When you start climbing a new building, the maximum number of bonus points appears on the screen, above your score (see **Figure 4**). For every ten seconds you climb, your bonus points decreases by 100 points. When you reach the top, you must grab the helicopter within 30 seconds, or you'll lose all your bonus points. You should grab the helicopter as fast as possible, since your bonus points continue to decrease until you touch the helicopter runner.



Bonus Points

Score

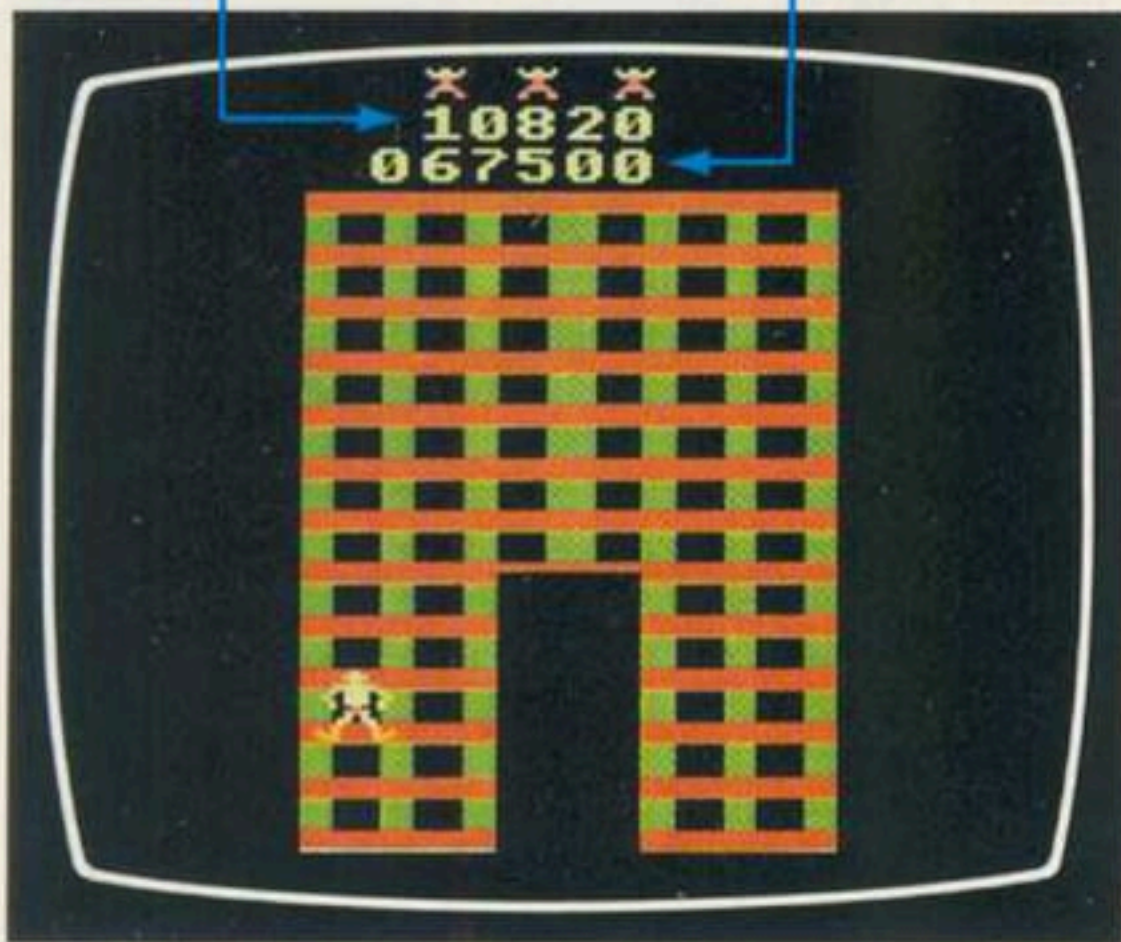


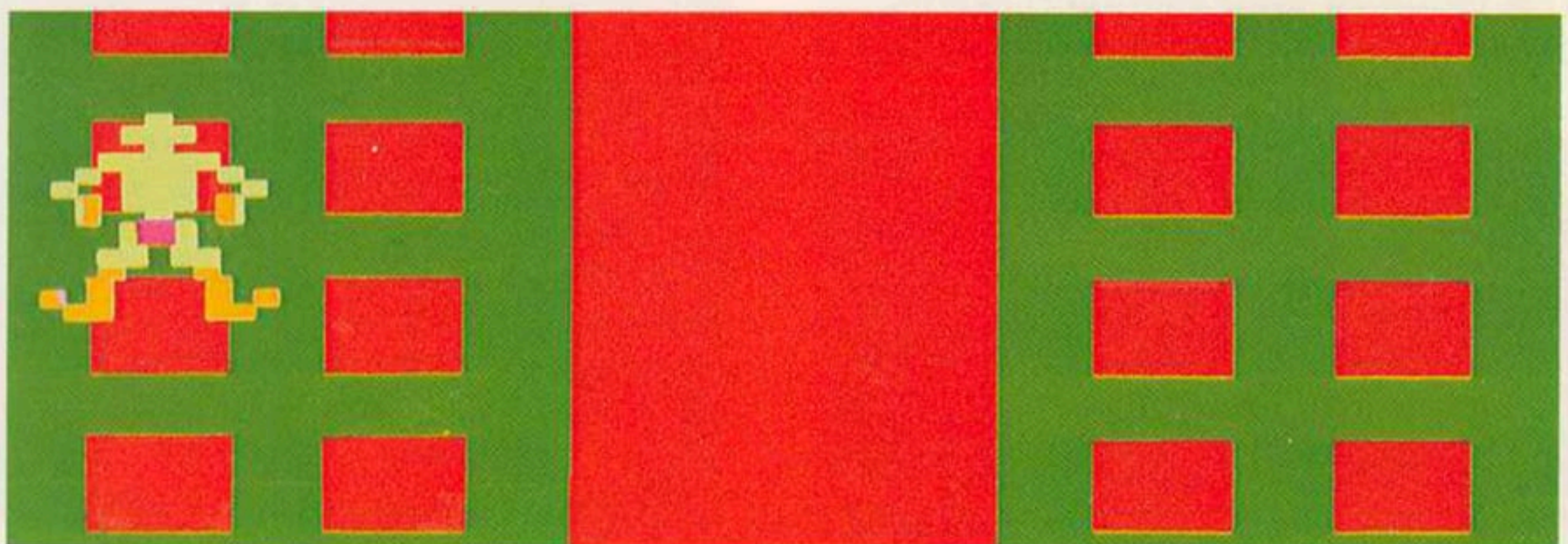
Figure 4—Scoring

The maximum value of your bonus points also depends on which building you are on:

Building 1	100,000 points
Building 2	200,000 points
Building 3	300,000 points
Building 4	400,000 points

7. HELPFUL HINTS

- Climb as fast as possible to score maximum bonus points.
- Climb past closing windows quickly. Remember that you can safely climb past any window as long as it doesn't close completely on your hands. Don't wait for a window to close—climb past it.
- Foil the Mad Doctor by climbing between two rows of windows. His missiles will whiz harmlessly past your head.
- Try to predict where the helicopter will dip down to pick you up. Then move to the best place—fast!



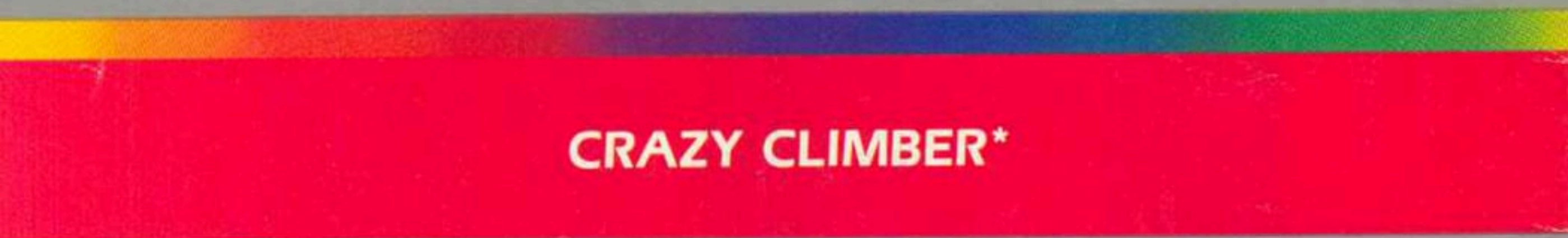
8. GAME SELECT MATRIX

	One Player	Two Player	Maximum Bonus Points	Climbing Points per Story	Climber Unharmed by Falling Objects
Building 1 ■			100,000	100	
Building 2 ■			200,000	200	
Building 3 ■			300,000	300	
Building 4 ■			400,000	400	
Novice ■			100,000	100	
Building 1 ■ ■			100,000	100	
Building 2 ■ ■			200,000	200	
Building 3 ■ ■			300,000	300	
Building 4 ■ ■			400,000	400	
Novice ■ ■			100,000	100	

ATARI
PROOF OF PURCHASE
CRAZY CLIMBER*



Call toll-free:
(800) 672-1404 (in California)
(800) 538-8543 (Continental U.S.)



CRAZY CLIMBER*

GAME CARTRIDGE LIMITED NINETY DAY WARRANTY

ATARI, INC. ("Atari") warrants to the original consumer purchaser that your ATARI® Game Program cartridge is free from any defects in material or workmanship for a period of ninety days from the date of purchase. If any such defect is discovered within the warranty period, Atari's sole obligation will be to replace the cartridge free of charge on receipt of the cartridge (charges prepaid, if mailed or shipped) with proof of date of purchase at either the retail store where the cartridge was purchased or at one of the ATARI Regional Service Centers listed below:

Atari, Inc.
1312 Crossman Ave.
Sunnyvale, CA 94086

Atari, Inc.
5400 Newport Dr.
Suite 1
Rolling Meadows, IL 60008

Atari, Inc.
12 B World's Fair Dr.
Somerset, NJ 08873

Atari, Inc.
2109 East Division St.
Arlington, TX 76001

This warranty shall not apply if the cartridge (i) has been misused or shows signs of excessive wear, (ii) has been damaged by being used with any products not supplied by ATARI, or (iii) has been damaged by being serviced or modified by anyone other than an ATARI Regional Service Center.

ANY APPLICABLE IMPLIED WARRANTIES, INCLUDING WARRANTIES OF MERCHANTABILITY AND FITNESS, ARE HEREBY LIMITED TO NINETY DAYS FROM THE DATE OF PURCHASE. CONSEQUENTIAL OR INCIDENTAL DAMAGES RESULTING FROM A BREACH OF ANY APPLICABLE EXPRESS OR IMPLIED WARRANTIES ARE HEREBY EXCLUDED.

Some states do not allow limitations on how long an implied warranty lasts or do not allow the exclusions or limitations of incidental or consequential damages, so the above limitations or exclusions may not apply to you.

This warranty gives you specific legal rights and you may also have other rights which vary from state to state.



ATARI, INC., Consumer Division, P.O. Box 427, Sunnyvale, CA 94086 A Warner Communications Company