

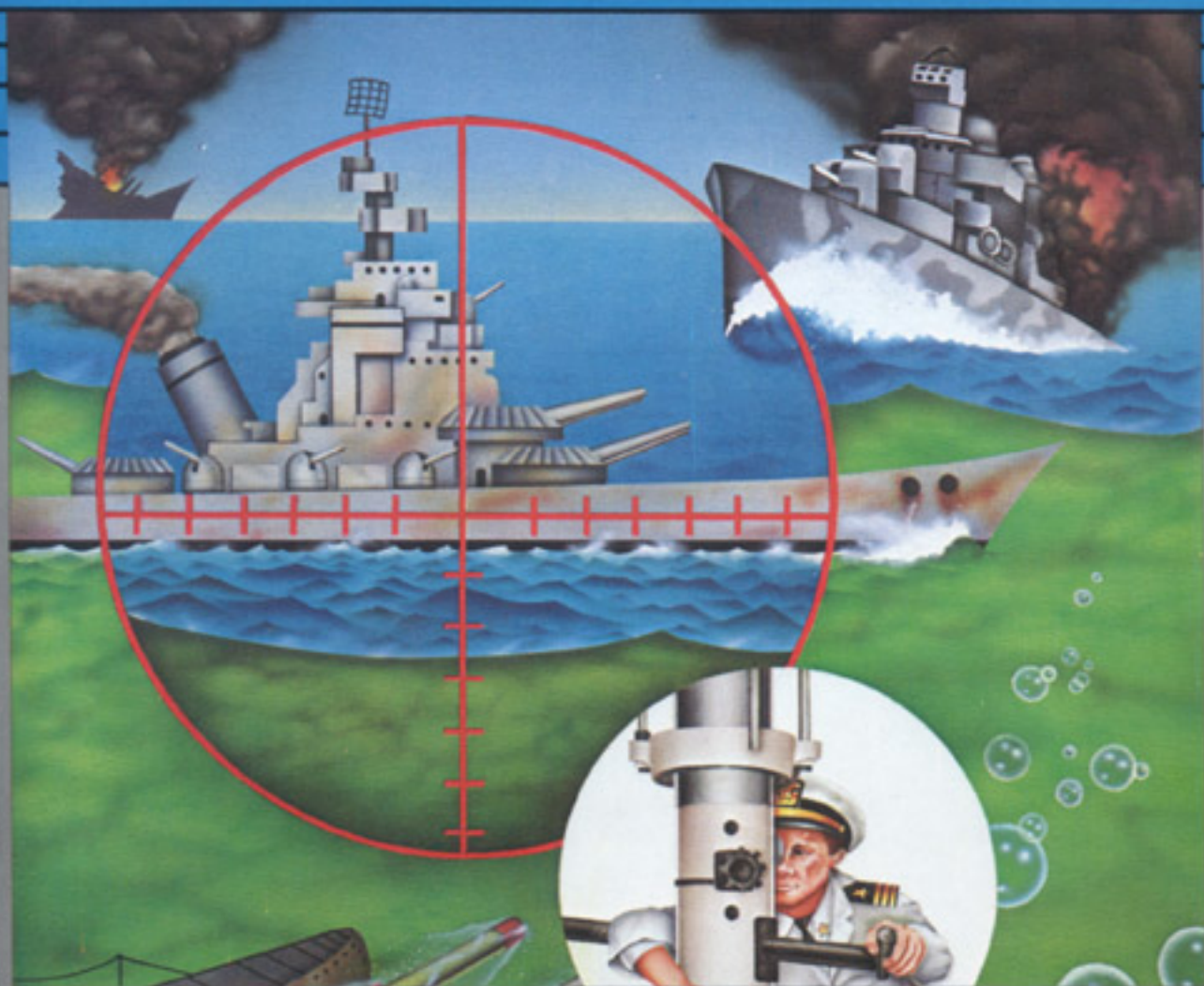


# SEA WOLF

A special home version of the *Bally* MIDWAY Arcade Game.

 **commodore**  **64**



 **commodore**

## INSTRUCTIONS FOR USE

# SEAWOLF

### Loading the Cartridge and Starting the Game.

1. Turn your C-64 OFF before inserting or removing the cartridge.
2. Insert the cartridge (label side up) into the wide expansion port on the back of the computer.
3. Turn the C-64 ON. After a second or two, the opening title should appear on the screen. (If the title doesn't appear, turn your C-64 off then back on.)

### STRATEGY

You are the commander...and SEAWOLF puts you in charge of sinking and destroying all enemy ships. You are armed with 4 torpedoes which will reload after you fire. Your primary targets are the small P.T. Boats which travel quickly through the water. You can choose the length of your playing time. Game times vary from 1 to 9 minutes in 1 minute intervals. Depress the appropriate tan function key on the right side of your C-64 to set the clock.

F1 .....	Standard Time
F3 .....	Increase Time
F5 .....	Decrease Time

## SEAWOLF SCORING

- 1) You can play SEAWOLF using the game paddles with 1 or 2 players. To start the game hit the F1 key.
- 2) To fire torpedoes press the RED FIRE button on your paddle.

## SCORING

Freighters .....	200 Points
Cruisers .....	500 Points
P.T. Boats .....	1000 Points

NOTE: Plug paddle into Port 1.

# Commodore 64

**“Commodore offers a full range of peripherals to increase the capabilities of your Commodore 64 and tailor your system to any need or budget”**

**Commodore  
Color Monitor:**

New color monitor with a 14" screen and outstanding resolution. The monitor has a special Commodore computer circuit with video recorder compatibility.

**Commodore  
Single  
Disk Drive:**

Fast, high capacity storage and retrieval of data on standard 5 1/4" floppy diskettes. Stores up to 170K on each diskette. Read/write compatibility with Commodore PET/CBM™ computer systems.

**Commodore  
Graphic  
Printer:**

Print any screen information on plain paper, letters, business data, graphic displays, basic programs and much more!

**Commodore  
Modem:**

Communicate with the vast knowledge available through outside data sources through your telephone and the low priced modem. [Stock market information, news & sports services & more.]

**Commodore  
Datassette™:**

Store your own computer programs on standard audio cassette tapes or use our low priced pre-recorded tape programs.

© Copyright 1981 by Commodore Business Machines, Inc. All rights reserved. No part of the programs or manual included in this work may be duplicated, copied, transmitted or reproduced in any form or by any means without the prior written permission of Commodore.

This cartridge may only be used with the Commodore 64 system.