

Published by



Developed by



© 1996 DigiFX Interactive, Inc. Harvester™ is a registered trademark of DigiFX Interactive, Inc. All rights reserved.
Published by Merit Studios, Inc. Printed in U.S.A.



INTRODUCTION

Welcome to Harvester. We would like to take a moment to help you become familiar with the installation instructions if this is the first time you have set up the game. During the installation, the screen will guide you through the setup process.

Note: If your system is using disk compression software such as Double Space or Drive Space, you will probably experience a longer program loading time. Harvester will run on computer systems that have such compression software installed. However, we cannot guarantee that problems may not occur if other compression software is used. For better performance we recommend using a drive without software disk compression.

IMPORTANT! *Harvester requires a swap file of 20MB to be available on your local hard drive. If you do not have at least 20MB of free disk space when playing Harvester the program may stop or crash the computer system. If your system has 16MB of RAM or greater, this swap-file is not needed.*

BEFORE INSTALLING

Before installing the game, you should verify the integrity and data on your hard disk drive. To do this simply run SCANDISK or DEFRAG from the DOS prompt or from Windows. Damaged data on your hard disk may result in poor system performance.

INSTALLING HARVESTER FROM DOS

To install Harvester from DOS:

1. Insert CD #1 into your CD-ROM drive.
2. Type the letter of your CD-ROM drive followed by a colon. (Example: D:) Then press ENTER. The prompt should display D: \ or similar.
3. Type INSTALL and press ENTER.
4. Follow the on screen instructions to install Harvester on your computer system.
5. When installation is complete, type HARVEST to begin the game.

ADDITIONAL INSTALLATION NOTES FOR DOS USERS

If you are using the EMS memory option/switch make sure you have at least 8MB (8192K) or more specified in the device= statement in the CONFIG.SYS. You may also use the option switch AUTO or the NOEMS option, or you may remove the line from your CONFIG.SYS file entirely.

Example lines for the CONFIG.SYS file:

```
device=emm386.exe 8192  
device=emm386.exe noems  
device=emm386.exe auto
```

Please make sure your CONFIG.SYS file has the statement FILES=20 or greater.

Harvester requires 500K of FREE available conventional (low) RAM in order to function properly. If your system has less than 500K FREE conventional (low) memory, you may need to run the MEMMAKER utility in order to increase your FREE RAM.

If your system has only 8MB of RAM, you will need to disable SMARTDRV or any other disk caching program. Harvester uses approximately 7MB of available memory, so with SMARTDRV or other disk caching programs loaded there is not enough memory available for the game.

INSTALLING HARVESTER FROM WINDOWS 3.1

To install Harvester from Windows 3.1:

1. Insert CD #1 into your CD-ROM drive.
2. Use your mouse to click *File* and then select *RUN*.
3. Type D: \SETUP and press ENTER to begin the installation.
(Where D: \ is the CD-ROM Drive)

When the installation is complete, there will be a *Harvester Program Group* which will contain several icons which you may select. To begin Harvester, simply click on the *Harvester* icon.

ADDITIONAL INSTALLATION NOTES FOR WINDOWS 3.1 USERS

If your system has only 8MB of RAM, you will need to disable the SMARTDRV disk caching program. Harvester uses approximately 7MB of available memory, so with SMARTDRV loaded there is not enough memory available for the game.

If while starting the program in Windows you have a moderately long *open program* sound association, then Harvester may fail to detect your computer's sound card when it starts, and thus will not initialize. Windows will not allow more than one sound device to be used at a time. To correct this problem, simply set your *open program* sound to *none*.

INSTALLING HARVESTER FROM WINDOWS 95


To install Harvester from Windows 95:

1. Insert CD #1 into your drive.
2. Use your mouse to click *Start Menu* and then select *RUN*.
3. Type `D:\SETUP` and press `ENTER` to begin the installation.
(Where `D:\` is the CD-ROM Drive)

When the installation is complete, there will be a *Harvester Program Group* which will contain several icons which you may select. To begin Harvester, simply click on the *Harvester* icon.

ADDITIONAL INSTALLATION NOTES FOR WINDOWS 95 USERS

When playing Harvester under Windows 95 it is recommended that there be no other programs running in the background. Should you attempt to switch back to Windows while playing Harvester, the game may cease to function properly. Should this occur, restart your computer and do not run any other programs while playing Harvester.

If your system has less than 16MB of RAM, you may need to set the *MS-DOS Protected Mode (DPMI) Memory* option in the *Properties* section to 16MB. Right click on the taskbar at the bottom of the screen. Click the *Properties* option. Next, click the *Start Menu Programs* option. Next, click the *Advanced* button to open the shortcut icons windows. Locate the Harvester shortcut. Right click on the Harvester icon and select the  *Properties* option. Select the *Memory* option. Locate the section

called *MS-DOS Protected Mode (DPMI) Memory*. Select the value `16384` and click `OK`. Close all windows.

Should your Windows screen saver attempt to load while playing Harvester, it may not allow you to return to the program, or it may halt or quit the game. Turn your screen saver off to resolve the problem.

If while starting the program in Windows, you have a moderately long *open program* sound association, then Harvester may fail to detect your computer's sound card when it starts, and thus will not initialize. Windows will not allow more than one sound device to be used at a time. To correct this problem, simply set your *open program* sound to *none*.

Notes: Because of the initial release of the Windows 95 video drivers, some video cards may have difficulty with DOS SVGA games. Please consult your video card manufacturer for the latest version of your Windows 95 video drivers.

If you are running Windows 95 and play Harvester from a DOS session, you may be required to place the VESA driver in your `AUTOEXEC.BAT` file.

SOUND CARD INFORMATION

Harvester usually detects most sound cards and the appropriate settings when the game begins. However, should the game not run, you may

run the SETSOUND program from the directory in which you installed the game files. The SETSOUND program will guide you in detecting or selecting the correct parameters for your sound card.

You may also run the SETSOUND program from within Windows 3.1 or Windows 95. To run the program simply click on the *Sound Setup* icon.

In addition, be sure the appropriate sound drivers are installed. Your sound card should be supplied with an installation program which configures your sound card to function properly with DOS games. If these drivers are not installed or they are incorrectly configured, the game may not function properly or may freeze your computer system.

VIDEO CARD (VESA) INFORMATION

Harvester utilizes high resolution graphics and requires your computer system to be VESA compatible. This is usually a software driver which is supplied by your video card manufacturer.

When starting Harvester, the game will attempt to detect if the VESA driver is loaded. However, some newer computer systems have VESA on the system's motherboard. In such cases, the VESA driver is automatically enabled when the game starts.

Note: If after allowing Harvester to run the VESA driver for you, the
7 computer system freezes or locks up, you will have to manually place

the VESA driver in your AUTOEXEC.BAT in order for the driver to function properly. If you do not have a VESA driver for your video card, CD #1 has the latest VESA drivers available located in the VESA directory. Please also refer to the file VESA.TXT located in the VESA directory. Simply copy the appropriate VESA driver to your hard disk and add the name of the driver (usually VESA.EXE or VESA.COM) to your AUTOEXEC.BAT file. Next, re-boot your system with the new VESA driver and try again.

STARTING HARVESTER FROM DOS

To play Harvester after it has been installed:

1. Make sure the CD-ROM is properly inserted into your CD-ROM drive.
2. Change to the drive and directory where you previously installed Harvester.
3. Type **HARVEST** and press **ENTER** to begin the game.

STARTING HARVESTER FROM WINDOWS 3.1 or 95

To play Harvester after it has been installed:

1. Make sure the CD-ROM is properly inserted into your CD-ROM drive.
2. Select the Program Group *Harvester*.
3. Select the *Harvester* icon and click left mouse button to begin the game.

UNINSTALLING HARVESTER

To remove Harvester using DOS, run the **UNINSTALL** program located in the directory in which you originally installed the program. Or, select the *Uninstall Harvester* icon in the Windows Program Group.

NOTES FOR PLAYING THE MAKING OF HARVESTER .AVI FILE

The .AVI file which is located on CD#1 uses a newer compression/decompression program called Intel Indeo Interactive™ by Intel. If the video does not play properly, select the *Install Intel Indeo* icon to set up your computer system. The .AVI file may be played by selecting *The Making of Harvester* icon or by using the Media Player which is included with Windows 95.

Playing Harvester

The Harvester game environment is based on a series of locations in which the player can click on, visit and/or converse with the people who populate the town of Harvest. During gameplay, the player will have to solve puzzles and use items to complete various tasks.

The Game Interface

The game's interface is designed around a simple point and click environment. The interface allows you to move the cursor around the screen and select "hot spots" with your left mouse button. When a hot spot is detected, the cursor will change to the appropriate cursor:



Movement

Walk to the location.



Operate/Open/Move

Operate the location or object indicated.



Conversation

Talk to the character indicated.



Exit

Leave the current room or location.



Examine

Examine the object indicated.

The Town Map

You move around in the town portion of Harvester by selecting any one of the locations on the town map. The town map will automatically appear whenever you exit your current location.



Moving the Player Character

Moving Steve (the player character) is as simple as moving the mouse to the desired location and left-clicking the mouse when the movement icon appears. Or, if you prefer, use the arrow keys to move the character. Your character will not move if the cursor is over an object or hot spot location.

Talking to Characters

To talk to a character, simply place the mouse cursor over the character and press the left mouse button. Upon entering dialogue mode you will have multiple choices for responding to the character. Please note that the responses which you provide to a particular character will dynamically change, depending on *when* you speak to that character.


Harvester's dialogue dynamically changes depending on other events which have taken place in the world of Harvest. A character's

responses may change *completely*, depending on what you have done and what events have occurred in the game world. Talk to characters often. They provide many clues and insights to solving puzzles.

Picking Up / Using Objects

Picking up and using objects is very easy in Harvester. After an object has been *examined*, the mouse cursor will automatically change to a *hand* cursor. To pick up an object which you have *examined*, simply left click the mouse button when the *hand* appears over the area. The cursor will change to the object you have just picked up. When your cursor is an object you may place it in your inventory by moving it over your character and pressing the left mouse button, or simply right click the mouse button.



If you wish to use an object on a location in the game world, simply left click the mouse button on your character or press  to

bring up your inventory box. Select the object you would like to use by left clicking the mouse button. The inventory box will automatically disappear if you move the mouse cursor outside the box area's boundary. To cancel using any object, click the right mouse button and the object will return to your inventory.



You can also left click on an inventory object and “drag” it over another inventory object. In certain cases a new object will be created and placed into your inventory.


Examining Objects

After acquiring certain objects in your inventory, you may view them in closer detail by moving the pointer over the object in your inventory and right clicking the mouse. This will “zoom” in on the object for a more detailed description. Note: Not all objects can be viewed close up.

Operating/Opening/Moving Objects in the World

In the world of Harvester, you will from time to time *operate/open/move* certain areas on the screen. By left clicking the mouse on these hot spots, the character can operate/open/move these areas.

Inventory

Your inventory is where all the items which you have picked up or acquired during the game are stored. There is no limit on the number of items which can be carried in your inventory. In order to solve puzzles, you will frequently access your inventory and left click on the object you want to use. To access your inventory, simply click on the player character with the left mouse button, or press the  key on your keyboard.

Solving Puzzles

As in any adventure game the primary goal in Harvester is to understand the mysteries in the town by solving puzzles. These puzzles vary, depending on the situation with which the player is presented.

Some of the more common puzzles are those which require the player to use objects on certain locations in the game world or on other objects in the inventory. This will cause events to happen, such as unlocking doors, opening chests, or giving items to people. Part of the enjoyment of the game is to try using objects on locations or people, thus provoking interesting responses.





In addition, puzzles are sometimes solved by operating certain areas on the screen which cause actions and events to occur.

Alternate Methods of Solving Puzzles

Harvester contains many situations in which there is *more than one correct way to solve a given puzzle*. Some players may solve a puzzle by analyzing the solution, while the others may choose a more violent approach.

Combat

During gameplay the character may choose the option to kill or fight another character any time he pleases. There are two scenarios where you may elect to kill a monster or character in the town of Harvest.

The first scenario is simply killing a non player character by attacking with the right mouse button or the **CTRL** +     keys.

By simply clicking the right mouse button your character will swing or fire his weapon in the direction in which he is facing.

The second scenario is a simple form of combat which forces the player to "kill or be killed" using any one of twenty one unique weapons which may be found during course of the game.



If you are using the mouse to combat your enemy, you may also focus or "direct" the attack on a specific area of your opponent's anatomy by positioning the target cursor over the enemy. The three areas for attack are the upper body, midsection and legs. To attack the enemy in any one of these areas, simply position the target cursor over the enemy and click the right mouse button.

Health

During the combat portions of the game your character may become injured. To find out how injured you are, click the left mouse button or press **I** to bring up your inventory. In the lower left portion of the screen there is a picture of your character.

As you become more injured, the player character's



picture appears more bloodied. If you do not have access to the healing items you will eventually die.

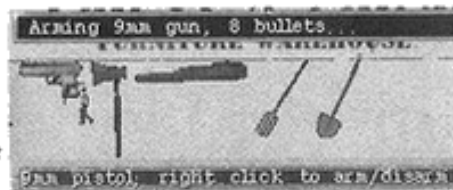
Throughout Harvester you will find objects which will allow you to heal your character simply by acquiring them.

Note: Be wise in your use of healing objects. You will need to heal in order to kill certain enemies.

Weapons

There are twenty-one (21) unique weapons in Harvester, each with its own unique attack capabilities. For example, a knife or your fists do much less damage than a chainsaw or shotgun. Be careful when you attack an enemy and what you attack him with. There are several characters who are quite powerful, and without a stronger weapon you may suffer the consequences...death.

To arm or disarm any weapon which you have acquired, simply move your mouse cursor over the weapon in your inventory, and click the right mouse button. Note: Because each weapon's attack capability is different, it takes a few moments to arm and disarm weapons.



Configuring Game Options

You may access the game options section by pressing the ESC key. After pressing ESC the following options will appear:



New Game

Selecting this option will start a new game from the beginning.

Save Game

Selecting this option allows you to save your current status. To save your game, use your mouse or your keyboard to highlight the slot where you want to save your game. Left click your mouse or press ENTER to select the slot. Type in the name of the game which you want to save. Press ENTER or click the SAVE option located at the bottom of the screen. Your game is now saved in that location.

Load Game

Selecting this option allows you to load a previously saved game into memory, allowing you to continue playing where you left off. To load a previously saved game, highlight the slot where your game is saved and press ENTER, or click the left mouse button to load.

Options

The options menu allows you to configure different elements within the game. There are several options within this section. They are as follows:

Sound Effects

Selecting this option allows the player to adjust the volume of the sound effects, using the mouse or keyboard arrow keys.

Music

Selecting this option allows the player to adjust the volume of the music, using the mouse or keyboard arrow keys.

Gamma Correction

Selecting this option allows the player to adjust the contrast and brightness of the game. Some computer monitors may be darker or lighter than others. This allows you to change the intensity to suit your taste.

Text

Selecting this option allows the player to turn the displayed text on, off, or quick.

Off

When text mode is **OFF** the player will only hear the voices of the characters. There will be no text displayed.

On

When text mode is **ON** the player will see the text displayed as well as hear the voices of the characters. When this option is selected, the player must click the left mouse button in order to advance or skip the current dialogue faster than normal.

Quick

When text mode is set to **QUICK** the player will see the text displayed as well as hear the voices of the characters. When this option is selected, the game will automatically advance and play the next section of dialogue. The player still has the option to click the left mouse button in order to advance or skip the current dialogue faster than normal.

Gore On/Off

Selecting this option allows the player to turn on or off the graphically violent scenes in the game.

Quick Tips

Selecting this option allows the player to activate a series of tips for playing the game.

Password On/Off

Selecting this option allows the player to set a password which, when activated, must be entered in order to play the game.

Help

Selecting this option allows the player to view the Help screen.

Quit Game

Selecting this option allows the player to leave the game.

Harvester Credits

DESIGNED AND WRITTEN BY

G.P. Austin

PRODUCER

M. Lee Jacobson

LEAD PROGRAMMER

ENGINE DEVELOPMENT

Nick Shaffner

PROGRAMMING

Bruce Mack

Dustin Nulf

Steve Goodman

TECHNICAL DESIGN

Tom Lima

M. Lee Jacobson

David Mitchell

LEAD ARTIST

Chad Woyewedtzic

ARTISTS

Michael Napadano

Scott Hansen

Tim Higgins

Jason Licklitter

R. Kevin Obregon

Craig Rundels

TESTING

Dennis Gyor

Steve Woyewodtzic

Jeff Scott

Glen Hansen

Libby Smithwick

1st Unit Filming

DIRECTOR

G.P. Austin

ASSISTANT TO THE DIRECTOR

Michael Brooks

CINEMATOGRAPHY/CAMERA

John Johns

Ultimate System 7 provided by
In-Sync, Dallas, TX

LIGHTING

Allied Lighting

AUDIO POST

Byron Parks

Chris Erlon,

Digital Domain, Austin, TX

KEY GRIP

Michael Brooks

MAKEUP

Barbara Kramer

CASTING

Peggy Taylor Talent, Inc. -
Dallas, TX

STAGE PRODUCTION

Jim Brovont

Jess Brovont

2nd Unit Filming

DIRECTOR

G.P. Austin

ASSISTANT TO THE DIRECTOR

Michael Brooks

CAMERA

Eric Jewel

John Cermin

BETACAM ENGINEER

Pat Gough

TELEPROMPTER

Becky Hamill

LIGHTING AUDIO POST

David Jewel

David Hughes

PRODUCTION FILM CO-ORDINATOR

Natalie Corey

MAKEUP

Jodi Callahan

FILMED AT

AMS Productions, Dallas, TX

Cast

Baby Sister (PC'S)

Michael Napadano, Jr.

Repair

Pieter Van Der Vliet

Cain

M R Eudy

Chessmaster

Tim Higgins

Cloakroom Attendant

Bill Nelson

Col. Buster Monroe

Graham Teschke

Curator

Charlie Latch

Cue Card Man

Mike Napadano

Dark Exotic Woman

Tracy Napadano

Deputy Loomis

Pieter Van Der Vliet

Edna Fitzpatrick
Roxanne Lovseth
Fireman Sparky
Nick Shaffner
Follower #1
Simon
Follower #2
Danny Hansard
Generic PTA Moms
Mary Allen
Generic Child in Classroom #1
Rheagan Wallace
Generic Child in Classroom #2
Ben Morgan
Generic Cop
Pieter Van Der Vliet
Gladiators
John Kaufman
Grand Poobah
Jack Irons
Hank
Ben Morgan
Indian #1
Matt Bentele
Indian #2 (Town)
Dennis Gyor

Inquisitor
W.D. Hollon
Jimmy James
Christopher Ammons
Mr. Johnson
Bob Cawley
Karin
Rheagan Wallace
Kewpie
Tom Lima
Mr. McKnight
Lee Jacobson
Librarian
Doris McLellan
Lodge Chef
Zeb Cash Lane
Muslim
Karen Sexton
Maintenance Man
Colonel Mason
Membership Director
Charlie Beecham
Mom
Mary Allen
Moynahan
G.P. Austin
Nude Man
Michael Brooks

Mr. Parsons
Bill Nelson
Mr. Pastorelli
Colonel Mason
Pat O'Reilly
Zeb Cash Lane
Mrs. Phelps
Doris McLellan
Postmaster Boyle
Charlie Beecham
Mr. Potsdam
Travis Miller
Mrs. Potsdam
Mary Allen
Priest
Jack Brovont
Prostitute
Dawn Wells
Range Ryder
Charlie Latch
Sergeant at Arms
R. Kevin Obregon
Sheriff Dwayne
Nelson Knight
Stephanie
Lisa Cangelosi
Steve (PC)
Kurt Kistler

Mr. Swell
Richard Raski
Technician #1
R. Kevin Obregon
Technician #2
Mike Napadano
Tortured Man
Dean Preston
Valet
Richard Raski
Viewer
Joel Guadarama
Mrs. Whaley
Karen Sexton
Vietnamese Girl
Christine Tran
Vietnamese Boy
Michael Tran
Vietnamese Mom
Ann Tran
War Veteran
John Brook
Wasp Woman
Persis Forster
Zombie Electrician
Ed Woyewodzie
Dalmation
Matt's dog

Customer Service

If you are experiencing difficulties with Harvester and you are a registered user, you may call our technical support department for assistance at (214) 385-2957. A technician will be available to help you between the hours of 10:00am and 5:00pm Central Time, Monday through Friday.

We welcome your questions, comments, or other feedback regarding Harvester or any of our other products. You may write to us at:

Merit Studios
13707 Gamma Road
Dallas, Texas 75244

For the latest Harvester technical support information and new product announcements, check out these sites on the World Wide Web:

Merit Studios DigiFX Interactive
www.softdisk.com/comp/merit www.digifx.net

On-Line Support Via CompuServe

For on-line support of Harvester via CompuServe, call 800-848-8199 and ask for Representative 321 to get your FREE introductory membership and \$15 usage credit. If you are already a member of CompuServe, type the command GO GAMAPUB at any ! prompt to get Merit Studios' support section, or contact our technical support department at ID# 76711,247.

25

MERIT STUDIOS PROGRAM AND LICENSE AGREEMENT AND LIMITED WARRANTY

CAREFULLY READ ALL THE TERMS AND CONDITIONS OF THIS AGREEMENT PRIOR TO USING THE PROGRAM RECORDED ON THE DISKETTES OR CD'S. OPERATING THIS PROGRAM INDICATES YOUR ACCEPTANCE OF THESE TERMS AND CONDITIONS.

COPYRIGHT: THESE PROGRAMS AND THE RELATED DOCUMENTATION ARE COPYRIGHTED. YOU MAY NOT USE, COPY, MODIFY, OR TRANSFER THE PROGRAMS OR DOCUMENTATION, OR ANY COPY THEREOF EXCEPT AS EXPRESSLY PROVIDED IN THIS AGREEMENT.

LICENSE: You have the non-exclusive right to use any enclosed program only on a single computer. You may load the program into your computer's temporary memory (RAM). You may physically transfer the program from one computer to another provided that the program is used on only one computer at a time. You may modify or translate the program providing such modification or translation is for your own use and that no more than one such modified or translated copy exists at any one time. You may not electronically transfer or access the program from another computer over a network. You may not distribute copies of the program or accompanying documentation to others. You may not decompile, disassemble, or reverse engineer the program. You may not attempt to unlock or bypass any copy protection utilized with the program. Title to the programs and all other rights and uses not specifically granted in this license are reserved by MERIT STUDIOS.

BACK-UP AND TRANSFER: You may make one (1) copy of the program solely for back-up purposes. You must reproduce and include the copyright notice on the back-up copy. You may transfer and license the product to another party only if the other party agrees to the terms and conditions of this Agreement and completes and returns a registration card to MERIT STUDIOS. If you transfer the program you must at the same time transfer the documentation and back-up copy or transfer the documentation and destroy the back-up copy.

TERMS: This license is effective until terminated. You may terminate it by destroying the program and documentation and all copies thereof. This license will also terminate if you fail to comply with any term or condition of this Agreement. You agree upon such termination to destroy all copies of the program and documentation.

PROGRAM DISCLAIMERS: The programs are provided "AS IS" without Warranty of any kind, either expressed or implied, including, but not limited to, the implied warranties of merchantability and fitness for a particular purpose. The entire risk as to the results and performance of any program is assumed by you. Should the program prove defective, you (and not MERIT STUDIOS or its dealers) assume the entire cost of all necessary servicing, repair or correction. Further, MERIT STUDIOS does not warrant, guarantee or make any representations regarding the use of, or the results of the use of, the program in terms of suitability, accuracy, reliability, currentness, or otherwise; and you rely on the program and results solely at your own risk.

MEDIA LIMITED WARRANTY: MERIT STUDIOS warrants to the original licensee that the media on which the program is recorded shall be free from defects in material and workmanship only for a period of ninety (90) days from the date of original purchase. If a defect covered by this warranty occurs during this 90-day warranty period, and it is returned to MERIT STUDIOS no later than five (5) days after the end of such 90-day period, MERIT STUDIOS shall either replace or repair the product. At the end of the expiration MERIT STUDIOS will replace or repair your purchase for \$5.

The above warranty is exclusive and in lieu of all other conditions and warranties, express or implied, including, but not limited to implied conditions or warranties of merchantability or fitness for a particular purpose and those arising by statute or otherwise in law or from a course of dealing or trade. To the extent such statutes or laws prohibit the exclusion of such implied warranties they shall be limited to a period of 90 days from the date of your original purchase. No conditions or warranties, either expressed or implied will apply after this period.

LIMITATION OF LIABILITY: MERIT Studios' liability is limited solely to the repair or replacement of the defective product, in its sole discretion, and shall not in any event include damages for loss of use or loss of anticipated profits or benefits or other incidental or consequential costs, expenses or damages, including without limitation, any data or information which may be lost or rendered inaccurate, even if MERIT STUDIOS has been advised of the possibility of such damages.

Some states do not allow an exclusion of implied warranty or limitation of incidental or consequential damages, so the above limitations or exclusions may not apply to you. This warranty gives you specific legal rights, and you may also have other rights which vary from state to state.

MISCELLANEOUS: This agreement represents the entire understanding regarding the programs and related documentation, and supersedes any prior purchase order, communications or representations. This agreement may only be modified by a written amendment signed by an officer of MERIT STUDIOS. If any provision of the agreement shall be deemed unlawful, void, or for any reason, unenforceable it shall be deemed severable from, and shall in no way affect the validity and enforceability of the remaining provisions of the agreement.

This license agreement shall be governed by the laws of the United States of America, State of Texas. If this product is being acquired for or on behalf of the United States of America, its agencies and/or instrumentalities, it is provided with RESTRICTED RIGHTS, and all use, duplication, or disclosure with respect to the included software and documentation is subject to the restrictions set forth in The Rights in Technical Data and Computer Software clause at 252.227-7013 of the DOD FAR and the Rights in Data-General clause at 52.227-14 of the FAR. Unless otherwise indicated, the manufacturer/integrator is Merit Studios, 13707 Gamma Road, Dallas, TX 75244.

The program License Agreement shall inure to the benefit of Merit Studios, its parent, and all affiliated companies thereof.

Merit Studios and the Merit logos are trademarks of Merit Software, Inc.