




XBOX 360



SINGULARITY™

ACTIVISION®

 **WARNING** Before playing this game, read the Xbox 360® console and accessory manuals for important safety and health information. Keep all manuals for future reference. For replacement console and accessory manuals, go to www.xbox.com/support.

Important Health Warning About Playing Video Games

Photosensitive seizures

A very small percentage of people may experience a seizure when exposed to certain visual images, including flashing lights or patterns that may appear in video games. Even people who have no history of seizures or epilepsy may have an undiagnosed condition that can cause these "photosensitive epileptic seizures" while watching video games.

These seizures may have a variety of symptoms, including lightheadedness, altered vision, eye or face twitching, jerking or shaking of arms or legs, disorientation, confusion, or momentary loss of awareness. Seizures may also cause loss of consciousness or convulsions that can lead to injury from falling down or striking nearby objects.

Immediately stop playing and consult a doctor if you experience any of these symptoms. Parents should watch for or ask their children about the above symptoms—children and teenagers are more likely than adults to experience these seizures. The risk of photosensitive epileptic seizures may be reduced by taking the following precautions: Sit farther from the screen; use a smaller screen; play in a well-lit room; do not play when you are drowsy or fatigued.

If you or any of your relatives have a history of seizures or epilepsy, consult a doctor before playing.

CUSTOMER AND TECHNICAL SUPPORT IN EUROPE

Online Services with Activision Forums, E-Mail and File Library Support

We advise for cost efficiency that you use our online web support.

NOTE: Please do not contact Customer Support for hints/codes/cheats; only technical issues.

Internet: <http://www.activision.com/support>

Our support section of the Web has the most up-to-date information available. We update the support pages daily, so please check here first for solutions. If you cannot find an answer to your issue, you can submit a question/incident to us using the online support form. A response may take anywhere from 24–72 hours depending on the volume of messages we receive and the nature of your problem. NOTE: Internet support is handled in English only.

Phone Support

For any other issues not covered by our web or email support, you can contact Activision's phone support in the UK on + 44 (0)870 241 2148 between the hours of 9.00am and 5.00pm (UK time) Monday to Friday with the exception of holidays. Local rates apply.

Your calls may be monitored.

Please do not send any game returns directly to Activision without first contacting Customer Support. It is our policy that game returns/refunds must be dealt with by the retailer or online site where you purchased the product. Please see the Limited Warranty contained within our Product License Agreement for warranty replacements.

TABLE OF CONTENTS

Game Controls.....	2
Basic Controls.....	3
Screen Display.....	4
Menu Navigation.....	5
Multiplayer.....	6
Connect to Xbox LIVE.....	7
Product License Agreement.....	8
Customer Support.....	13

220 ОТКЛ
Я

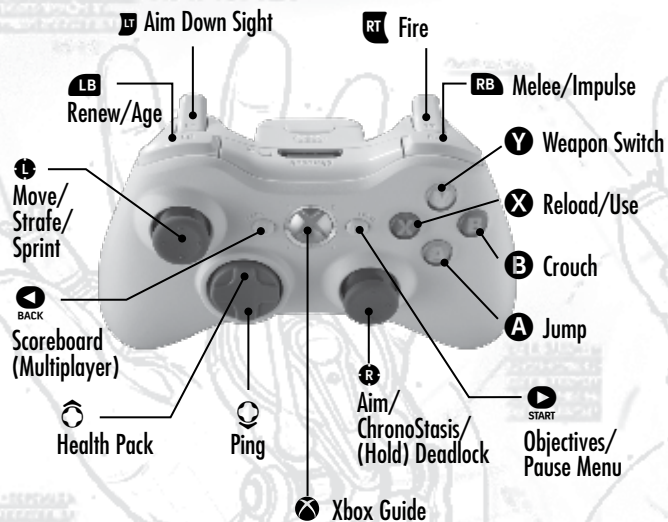
Vector Design

ПЕРЕ РАБОТУ ИЛИ ДО ПЕРЕ
ПРОВЕРЬ ИЛИ ДО ПЕРЕ ЗАЩИТЫ
ИЛИ ДО ПЕРЕ СР-ПЕРЕИЛИ ДО ПЕРЕ
ИЛИ ДО ПЕРЕ ИЛИ ДО ПЕРЕ ИЛИ ДО ПЕРЕ



GAME CONTROLS

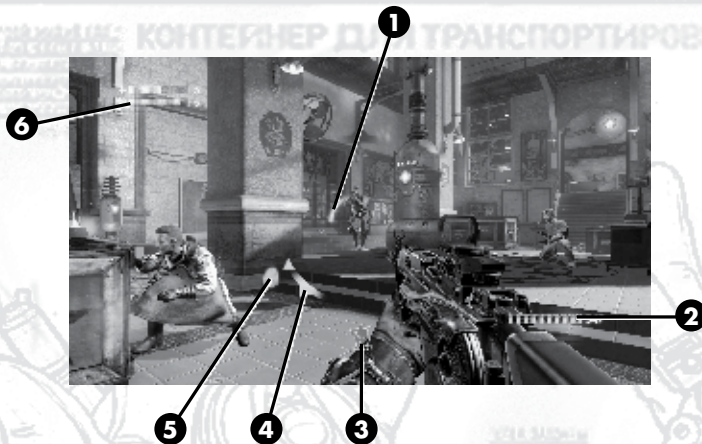
Xbox 360 Controller



BASIC CONTROLS

Function	Button
Move/Strafe	
Aim	
Fire	
Aim Down Sight	
Renew/Age	
Melee/Impulse	
Sprint	
ChronoStasis/Deadlock (hold)	
Reload/Use	
Jump	
Crouch	
Weapon Switch	
Health Pack	
Ping	
Objectives/Pause Menu	

SCREEN DISPLAY



- 1. Object State Indicator:** A half circle will appear over an object that you can manipulate. The blue icon will make the object new and the orange will make the object old.
- 2. Ammo Counter:** Ammo in the current clip is displayed as individual projectiles, and total ammo is shown to the immediate right.
- 3. Stance Indicator:** This appears if you're crouched or carrying certain objects.
- 4. Damage Indicator:** This appears on screen when you're taking damage. The arrow points to the origin of the damage.
- 5. Grenade Indicator:** This appears when a grenade has been thrown at you. The arrow points in the direction of the grenade.
- 6. E99 Meter:** The orange bar will show the E99 charge level. When used, the TMD will need to cool down, and the meter will slowly refill. This can also be filled using E99 vials.
- 7. Low Health Warning (not shown):** This appears if you are severely injured. The more red haze that appears on screen, the lower your health.

MENU NAVIGATION

Controls

- / : Navigate menus.
- : Accept highlighted option.
- : Return to previous menu or cancel.

Main Menu

Continue Game: Load most current progress.

Load Game (only appears if two or more save slots are occupied): Select a save slot to load your progress.

New Game: Start a new game.

Multiplayer: Access friends list, leaderboards and Xbox LIVE®.

Options: Adjust brightness, sound/music volume and controls.

Review: View statistics and credits.

Options Menu

Video: Adjust in-game brightness.

Audio: Adjust the volume of sound effects and music.

Controls: Adjust analog stick Sensitivity, toggle Controller Vibration on or off, and Invert Look (Y-axis).

Pause Menu

Return to Game: Resume gameplay.

Reload Checkpoint: Restarts from most recent checkpoint.

Options: Adjust your video, audio and controls.

Quit to Main Menu: Returns to the Main Menu.

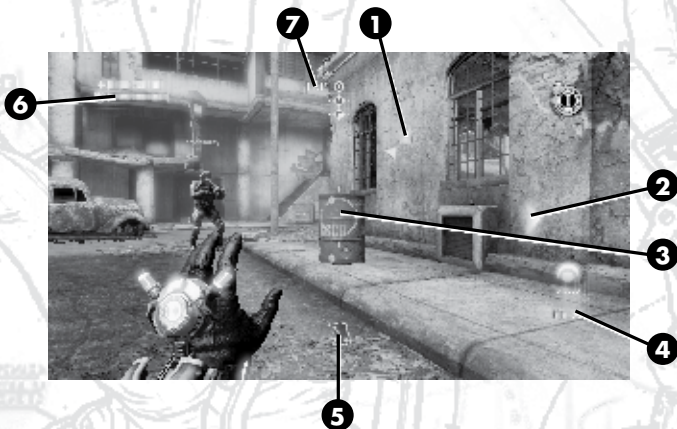
MULTIPLAYER

Multiplayer Modes

Extermination: Play as Soldiers versus Creatures in a battle to control beacons on each map.

Team Deathmatch: Work together with others to defeat your enemies. The team with the most points at the end of the match wins.

Multiplayer Screen Display



- 1. Tick Indicator:** This appears when a tick is flying at a player. The arrow points in the direction of the tick.
- 2. Directional Beacon Indicator:** This points in the direction of the beacon during the Extermination game type.
- 3. TMD Gravity Indicator:** This indicates that an object can be manipulated with the TMD gravity function.
- 4. Ammo Counter:** Ammo in the current clip is displayed as individual projectiles, and total ammo is shown to the immediate right.
- 5. Stance Indicator:** This appears if a player is crouched.
- 6. E99 Meter:** The orange bar will show the E99 charge level. When used, the TMD will need to cool down, and the meter will slowly refill.
- 7. Beacon Time Status:** This indicates the amount of time remaining to capture or defend a beacon in Extermination mode.

Xbox LIVE

Xbox LIVE® is your connection to more games, more entertainment, more fun. Go to www.xbox.com/live to learn more.

Connecting

Before you can use Xbox LIVE, connect your Xbox 360 console to a high-speed Internet connection and sign up to become an Xbox LIVE member. For more information about connecting, and to determine whether Xbox LIVE is available in your region, go to www.xbox.com/live/countries.

Family Settings

These easy and flexible tools enable parents and caregivers to decide which games young game players can access based on the content rating. Parents can restrict access to mature-rated content. Approve who and how your family interacts with others online with the Xbox LIVE service, and set time limits on how long they can play. For more information, go to www.xbox.com/familysettings.