

REGISTER YOUR  
 PRODUCT AND GET  
**RESIDENT EVIL® 4**  
 GOODIES!

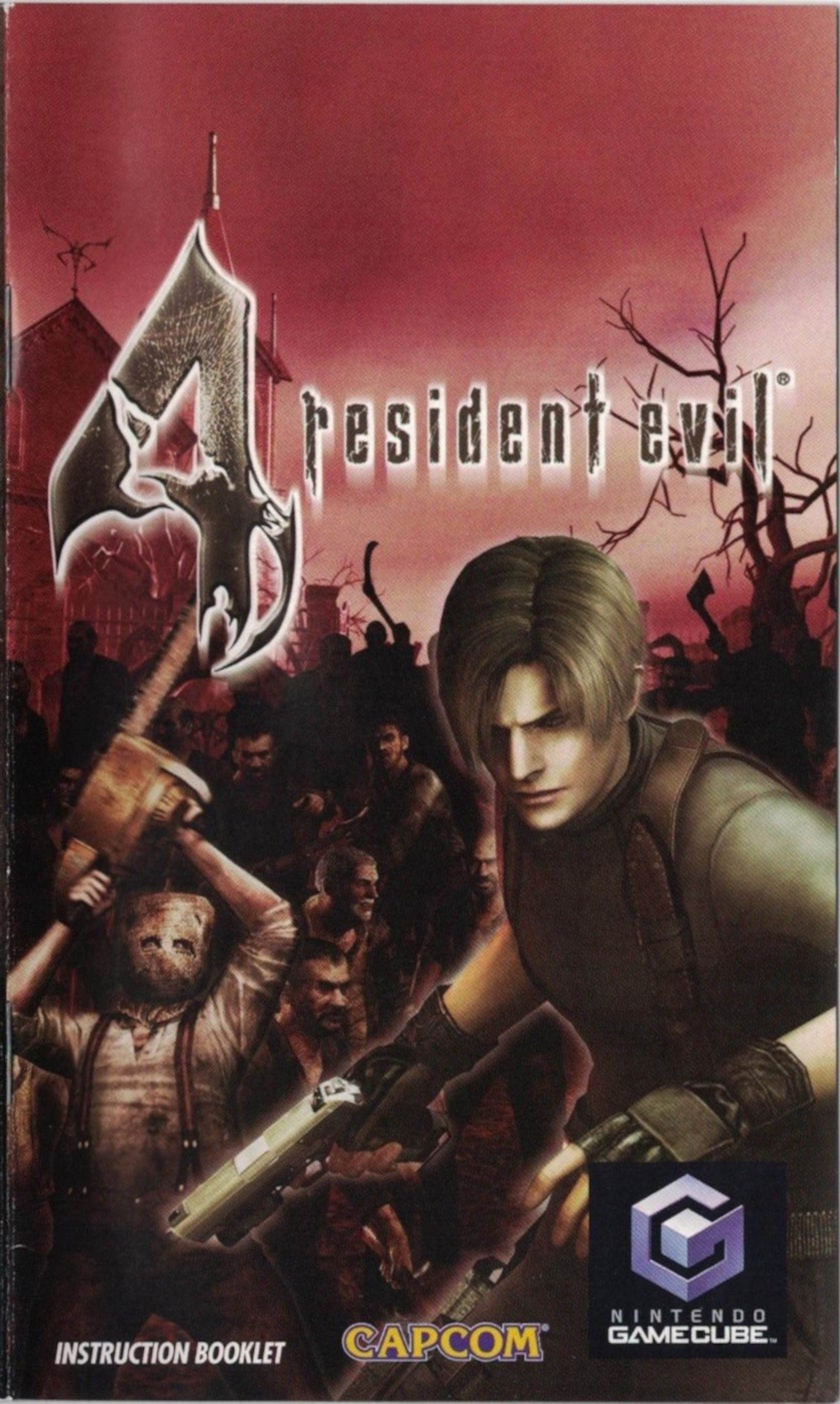
[www.capcom.com/insider](http://www.capcom.com/insider)

**CAPCOM**

[www.ResidentEvil.com](http://www.ResidentEvil.com)

CAPCOM ENTERTAINMENT, INC.  
 475 OAKMEAD PARKWAY, SUNNYVALE, CA 94085

PRINTED IN USA



resident evil®

INSTRUCTION BOOKLET

**CAPCOM**



**PLEASE CAREFULLY READ THE SEPARATE HEALTH AND SAFETY PRECAUTIONS BOOKLET INCLUDED WITH THIS PRODUCT BEFORE USING YOUR NINTENDO® HARDWARE SYSTEM, GAME DISC OR ACCESSORY. THIS BOOKLET CONTAINS IMPORTANT HEALTH AND SAFETY INFORMATION.**

**IMPORTANT SAFETY INFORMATION: READ THE FOLLOWING WARNINGS BEFORE YOU OR YOUR CHILD PLAY VIDEO GAMES**

### **⚠ WARNING - Seizures**

- Some people (about 1 in 4000) may have seizures or blackouts triggered by light flashes or patterns, such as while watching TV or playing video games, even if they have never had a seizure before.
- Anyone who has had a seizure, loss of awareness, or other symptom linked to an epileptic condition should consult a doctor before playing a video game.
- Parents should watch when their children play video games. Stop playing and consult a doctor if you or your child have any of the following symptoms:

Convulsions	Eye or muscle twitching	Loss of awareness
Altered vision	Involuntary movements	Disorientation

To reduce the likelihood of a seizure when playing video games:

1. Sit or stand as far from the screen as possible.
2. Play video games on the smallest available television screen.
3. Do not play if you are tired or need sleep.
4. Play in a well-lit room.
5. Take a 10 to 15 minute break every hour.

### **⚠ WARNING - Repetitive Motion Injuries and Eyestrain**

Playing video games can make your muscles, joints, skin or eyes hurt after a few hours. Follow these instructions to avoid problems such as tendinitis, carpal tunnel syndrome, skin irritation or eyestrain:

- Avoid excessive play. It is recommended that parents monitor their children for appropriate play.
  - Take a 10 to 15 minute break every hour, even if you don't think you need it.
  - If your hands, wrists, arms or eyes become tired or sore while playing, stop and rest them for several hours before playing again.
- If you continue to have sore hands, wrists, arms or eyes during or after play, stop playing and see a doctor.

### **⚠ WARNING - Electric Shock**

To avoid electric shock when you use this system:

- Do not use the Nintendo GameCube during a lightning storm. There may be a risk of electric shock from lightning.
- Use only the AC adapter that comes with your system.
- Do not use the AC adapter if it has damaged, split or broken cords or wires.
- Make sure that the AC adapter cord is fully inserted into the wall outlet or extension cord.
- Always carefully disconnect all plugs by pulling on the plug and not on the cord. Make sure the Nintendo GameCube power switch is turned OFF before removing the AC adapter cord from an outlet.

### **⚠ CAUTION - Motion Sickness**

Playing video games can cause motion sickness. If you or your child feel dizzy or nauseous when playing video games with this system, stop playing and rest. Do not drive or engage in other demanding activity until you feel better.

### **⚠ CAUTION - Laser Device**

The Nintendo GameCube is a Class I laser product. Do not attempt to disassemble the Nintendo GameCube. Refer servicing to qualified personnel only.

Caution - Use of controls or adjustments or procedures other than those specified herein may result in hazardous radiation exposure.

### **CONTROLLER NEUTRAL POSITION RESET**

If the L or R Buttons are pressed or the Control Stick or C Stick are moved out of neutral position when the power is turned ON, those positions will be set as the neutral position, causing incorrect game control during game play.

To reset the controller, release all buttons and sticks to allow them to return to the correct neutral position, then hold down the X, Y and START/PAUSE Buttons simultaneously for 3 seconds.



The official seal is your assurance that this product is licensed or manufactured by Nintendo. Always look for this seal when buying video game systems, accessories, games and related products.

Nintendo does not license the sale or use of products without the Official Nintendo Seal.



1 Player

**THIS GAME SUPPORTS GAME PLAY WITH ONE PLAYER AND CONTROLLER.**



Memory Card

**THIS GAME REQUIRES A MEMORY CARD FOR SAVING GAME PROGRESS, SETTINGS OR STATISTICS.**

#### IMPORTANT LEGAL INFORMATION

Copying of any video game for any Nintendo system is illegal and is strictly prohibited by domestic and international intellectual property laws. "Back-up" or "archival" copies are not authorized and are not necessary to protect your software. Violators will be prosecuted.

This video game is not designed for use with any unauthorized copying device or any unlicensed accessory. Use of any such device will invalidate your Nintendo product warranty. Nintendo (and/or any Nintendo licensee or distributor) is not responsible for any damage or loss caused by the use of any such device. If use of such device causes your game to stop operating, disconnect the device carefully to avoid damage and resume normal game play. If your game ceases to operate and you have no device attached to it, please contact the game publisher's "Technical Support" or "Customer Service" department.

The contents of this notice do not interfere with your statutory rights.

This booklet and other printed materials accompanying this game are protected by domestic and international intellectual property laws.

## CAPCOM

CAPCOM ENTERTAINMENT, INC.  
475 Oakmead Parkway, Sunnyvale,  
CA 94085

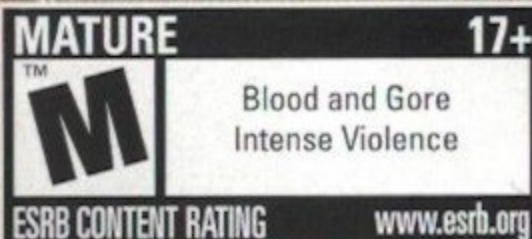
© CAPCOM CO., LTD. 2005.  
© CAPCOM U.S.A., INC. 2005  
ALL RIGHTS RESERVED.

CAPCOM, the CAPCOM logo and  
RESIDENT EVIL are registered  
trademarks of CAPCOM CO., LTD.

The ratings icon is a registered  
trademark of the Entertainment  
Software Association. All other  
trademarks are the property of  
their respective owners.

# CONTENTS

PROLOGUE .....	2	MAP SCREEN .....	13
CHARACTERS .....	3	ITEM SCREEN .....	14
SETTING UP .....	4	FILE SCREEN .....	15
GETTING INTO THE GAME .....	5	COMM SCREEN .....	15
CONTROLS .....	6	COMBINING ITEMS .....	16
ACTIONS .....	8	WEAPONS DEALER .....	17
ACTION BUTTON .....	9	GAME OVER & CONTINUE .....	18
GAME SCREEN .....	10	SAVING & LOADING .....	19
STATUS SCREEN .....	11	OPTION SCREEN .....	20
ATTACHE CASE .....	12	HINTS .....	21

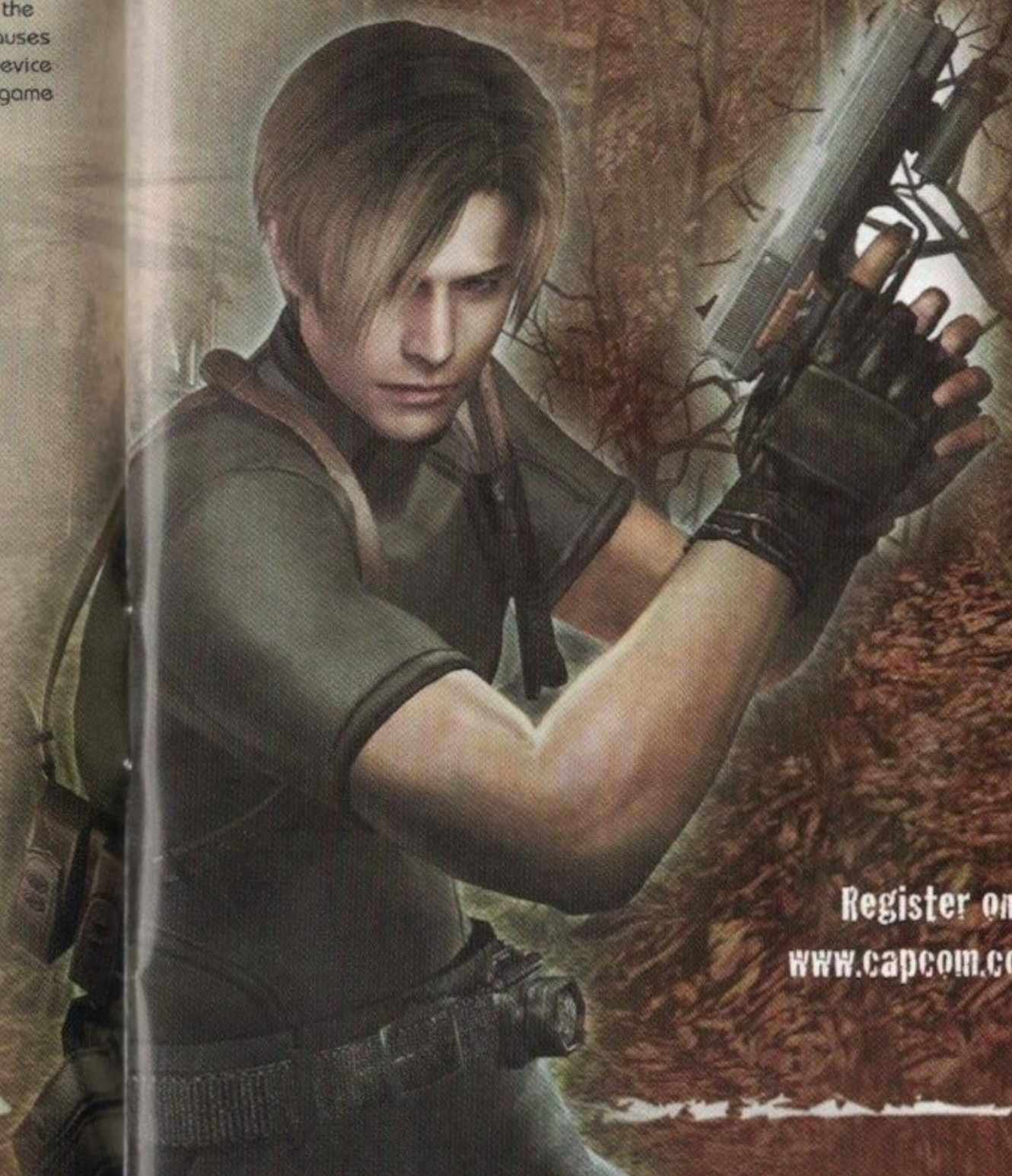


LICENSED BY

**Nintendo**

NINTENDO, NINTENDO GAMECUBE AND THE OFFICIAL SEAL ARE TRADEMARKS OF NINTENDO.  
© 2001 NINTENDO. ALL RIGHTS RESERVED.

Register online at  
[www.capcom.com/insider](http://www.capcom.com/insider)



# PROLOGUE

Several years have passed since the destruction of Raccoon City...



Leon is now facing his ultimate challenge...



A mysterious village.



Creatures that defy nature...



Are they human  
...or...?



# CHARACTERS

## LEON S. KENNEDY

Agent for the U.S. Government. He has been sent to Europe on a solo mission to rescue the President's kidnapped daughter, Ashley. Leon is one of the few people who survived the destruction of Raccoon City six years ago.

## ASHLEY

Daughter of the President of the United States. She was kidnapped by a mysterious group on the way home from her college in Massachusetts. Allegedly she has been spotted in a village in Europe, but there has been no sign of her since!



## SETTING UP

### STARTING UP

1. Make sure the **POWER** Button is **OFF** on your Nintendo GameCube™.
2. Insert the **RESIDENT EVIL® 4** Nintendo GameCube™ Game Disc 1 as described in the instruction manual.
3. Insert the Nintendo GameCube™ Controller into Controller Socket 1.
4. To save games, insert a Nintendo GameCube™ Memory Card into Memory Card Slot A or B.
5. Press the **POWER** Button **ON**. The Title Screen will appear.  
**IMPORTANT:** Make sure not to touch the **CONTROL STICK** while powering on.

Press the **OPEN** Button to open the Disc Cover and replace Game Disc 1 with Game Disc 2. After you have exchanged the Game Discs, close the Disc Cover.

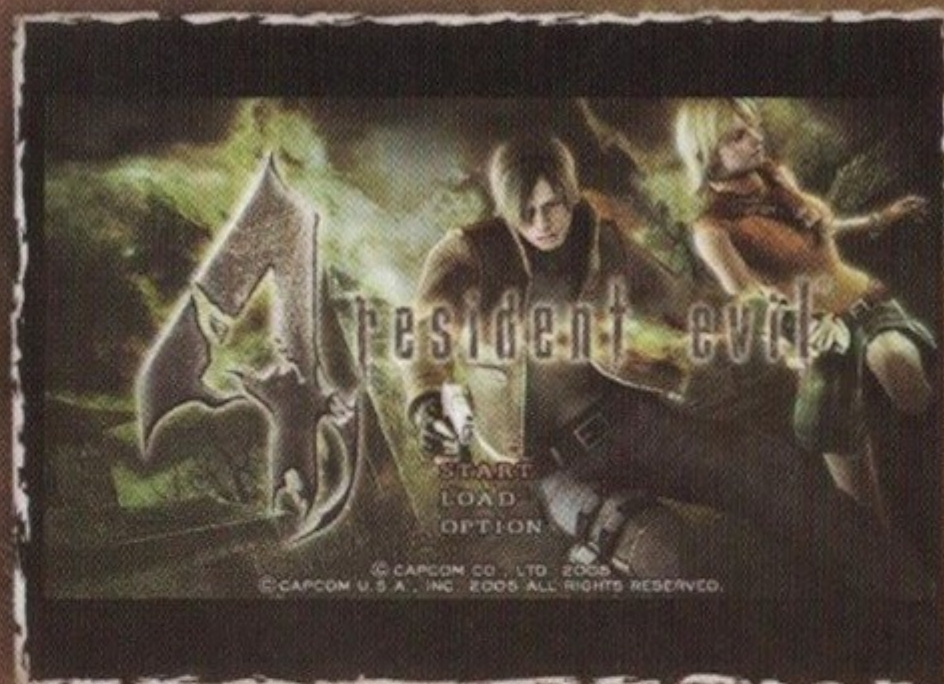
### CHANGING DISCS

**RESIDENT EVIL® 4** is contained on two game discs.

- ▶ You must insert Disc 1 to start the game.
- ▶ When you complete Disc 1, a screen appears prompting you to switch to Disc 2.
- ▶ Remove Disc 1 and insert Disc 2 to continue enjoying the game.

**IMPORTANT:** Once you progress to Disc 2, if you do not save before turning off the power, your progress will only be saved up to the end of Disc 1 and you will not be able to continue from Disc 2.

## GETTING INTO THE GAME



### STARTING A GAME

Use the Control Stick or +Control Pad to highlight your choice on the Main Menu, and press the **A** Button.

▶ **START** — Press **START/PAUSE** to start a new game from the beginning.

**NOTE:** When you complete the game, the next time you start a new game you'll be able to select a difficulty level and enjoy a brand new challenge.

▶ **LOAD** — Load your saved progress and continue your game. Selecting the last saved file lets you restart the game right from where you left off. (See page 19.)

▶ **OPTION** — Change various game settings. (See page 20.)

# CONTROLS

All button controls used in this manual are the defaults. You can change the button mapping on the Option screen. (See page 20.)

## L BUTTON

- Rotate items in Attache Case
- (Hold) = Switch to Knife (see page 9)

## R BUTTON

- Hold weapon ready
- (Hold) + A Button = Fire/Attack
- (Hold) + B Button = Reload



## START/PAUSE

- Open Option screen
- Skip movies

## CONTROL STICK/+CONTROL PAD

- Move forward/back
- Turn left/right
- R Button (hold) then move = Aim weapon

## Z BUTTON

- Open Map

## Y BUTTON

- Open Status screen



## X BUTTON

- Organize items in Attache Case
- Communicate with Ashley (toggle to alternate between "Wait" and "Follow me!")

## A BUTTON

- Confirm (on menus)
- Action/Attack

## B BUTTON

- Cancel (on menus)
- + Control Stick  = Run
- + Control Stick  = 180 Turn

## C STICK

- Move camera view 

# ACTIONS

## AIM AND SHOOT!

- ▼ Press the R Button + the Control Stick or +Control Pad to aim. (Use your weapon's laser sight.)
- ▼ Press the A Button to shoot (attack).



## 180 TURN

- ▼ Press the Control Stick ↓ + the B Button to turn completely around.
- ▼ While moving backward, press the B Button to do an "about face"!



## WEAPON RELOAD

- ▼ Press the R Button + the B Button to reload your weapon.

## KNIFE ATTACK

- ▼ Hold the L Button to switch to the Knife regardless of your equipped weapon.
- ▼ While holding the L Button, press the A Button to attack.



# ACTION BUTTON

When you see the Action Button hint on screen, press the A Button to perform various awesome actions.



Aim for enemy's head!

Get close and press the A Button!



Kick!



## GAME SCREEN



Action Button  
Hint

Health

Remaining Ammo

- ▼ Your Health is vital to your success. If it disappears, your game ends. Keep up your health by finding power-ups and avoiding enemy attacks and traps.
- ▼ Once Ashley joins you, her Health appears here along with yours.
- ▼ When you run out of ammo, the Remaining Ammo indicator reads EMPTY. If you have Ammo in your inventory you need to reload. If you don't, you need to switch to another weapon.

## STATUS SCREEN



Attache Case  
(see page 12)

Currency

Name of  
Selected Item

Press the Y Button to open the Status screen. Here you can:

- ▼ Organize items.
- ▼ Equip weapons.
- ▼ Use Recovery items.
- ▼ Combine herbs and other items.

### EQUIPPING/USING ITEMS

- ▼ Highlight the items you want to equip or use and press the A Button to display commands.
- ▼ Select EQUIP or USE to perform that command.

## ATTACHE CASE



### ORGANIZING ITEMS IN YOUR ATTACHE CASE

- Highlight the item you want to move, then press the X Button.
- Move the cursor to an empty space.
- Press the A Button to complete the move.
- Press the L and R Buttons to rotate the selected item.

### Temporary Space

### TEMPORARY SPACE

When you don't have enough space for every item, you can place extra items in the Temporary Space.



## MAP SCREEN

Press the Z Button on the Status screen to display the Map.



Destination

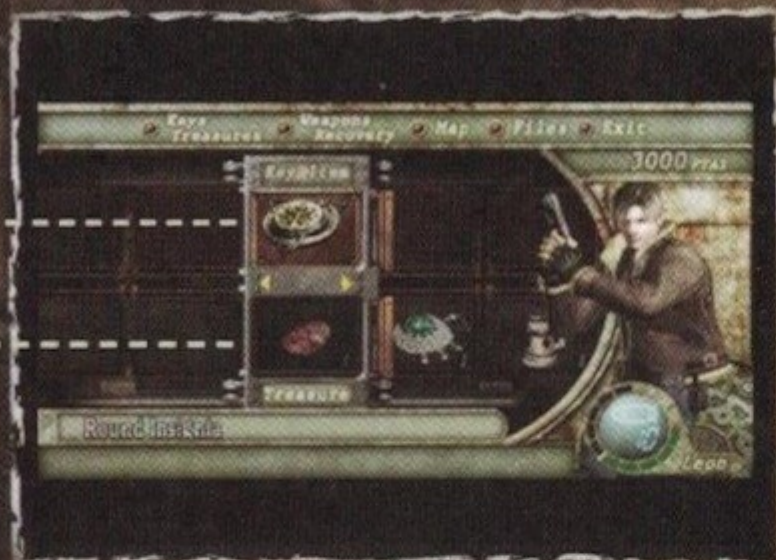
Current Location



### SELECT MARKER

Select the item you want to see and it will appear on the Map, showing you its location.

## ITEM SCREEN



Key Item

Bonus Item

- ▼ Highlight either the Key or Bonus item and press the A Button to display the list of commands.
- ▼ Then select your command.

## FILE SCREEN

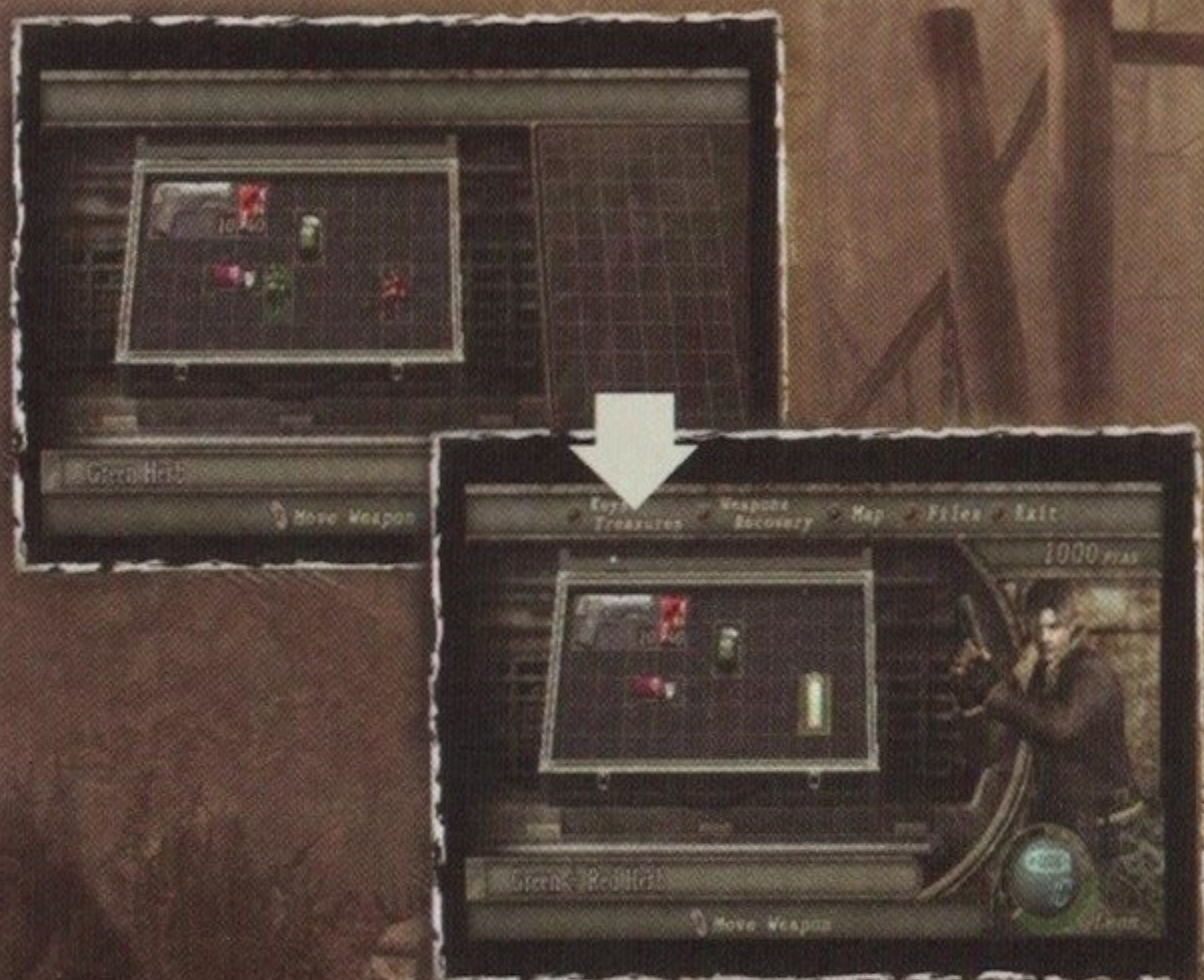


View Files acquired during the game.

## COMM SCREEN

Hunnigan will contact you with advice and warnings at certain times during the game.

## COMBINING ITEMS

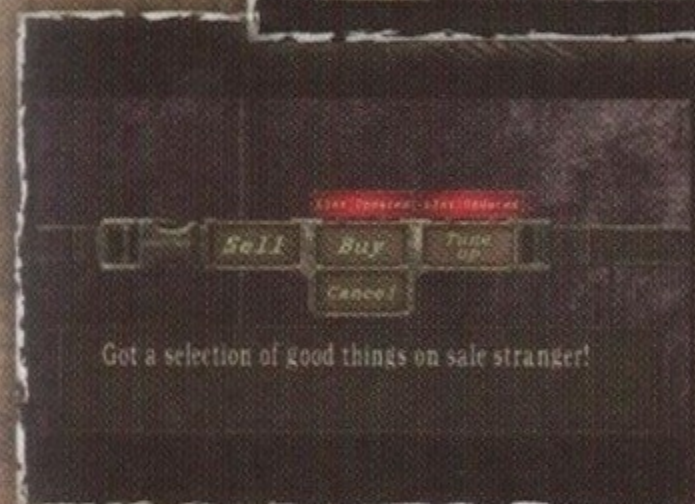


By combining related items, you can free up space in your inventory and even power up your weapons.

### COMBINING HERBS

- ▼ Highlight the herb you want to combine, press the A Button and select **COMBINE**.
- ▼ Line it up with the second herb.
- ▼ Press the A Button to combine the original herbs into a new herb.

## WEAPONS DEALER



Talk to the Weapons Dealer to buy and sell items. Here you can:

- ▼ **BUY** – Purchase weapons and parts.
- ▼ **TUNE UP** – Increase the firepower of your current weapons.
- ▼ **SELL** – Trade in jewels and other treasures for money.

**NOTE:** If you don't have enough space in your Attache Case, you may not be able to make purchases.

## GAME OVER & CONTINUE

### GAME OVER

Getting attacked by enemies and falling into enemy traps depletes your Health Meter. When the meter reaches zero, your game is over.



### CONTINUE

Even if your game is over, you can choose to continue the same game. To do that, select YES on the Continue screen.

Continue Yes / No

## SAVING & LOADING

### SAVING YOUR PROGRESS

Use typewriters you'll find in the game to save your progress to a Memory Card.

- ▶ You must have a Nintendo GameCube™ Memory Card inserted into Memory Card Slot A or B in order to save your progress.
- ▶ Each saved game requires 9 or more blocks of free space on a Memory Card.
- ▶ Do not insert or remove the Memory Card while saving game data.



### LOADING SAVED DATA

Load your saved game progress by selecting LOAD GAME on the Main Menu, or RETRY OR LOAD on the Option screen. (To open the Option screen in mid-game, press START/PAUSE.)

- ▶ You must have a Nintendo GameCube™ Memory Card containing saved RESIDENT EVIL® 4 game data inserted into Memory Card Slot A or B in order to load a saved game.
- ▶ Do not insert or remove the Memory Card while loading game data.



## OPTION SCREEN

Select **OPTION** from the Main Menu, or press **START/PAUSE** to open the Option screen.

Change various game settings on this screen. Highlight an option by moving the Control Stick or + Control Pad **▲/▼**, and change the setting by moving **◀/▶**.

- ▼ **RETRY OR LOAD** – Restart the game from a specific point.
- ▼ **CONTROLLER SETUP** – Toggle the camera control up/down, turn the Controller's Rumble feature **ON/OFF**, and select **KNIFE TYPE 1** or **2**.
- ▼ **BRIGHTNESS ADJUST** – Adjust the brightness of your TV screen.
- ▼ **AUDIO SETUP** – Select **STEREO**, **MONAURAL**, or **DOLBY SURROUND PRO LOGIC II**. (This game is presented in Dolby Surround Pro Logic II. Connect your console to a sound system with Dolby Pro Logic, Dolby Pro Logic II, or Dolby Pro Logic IIx decoding to experience the excitement of surround sound.)

**NOTE:** Refer to the screen hints when changing settings.

## HINTS

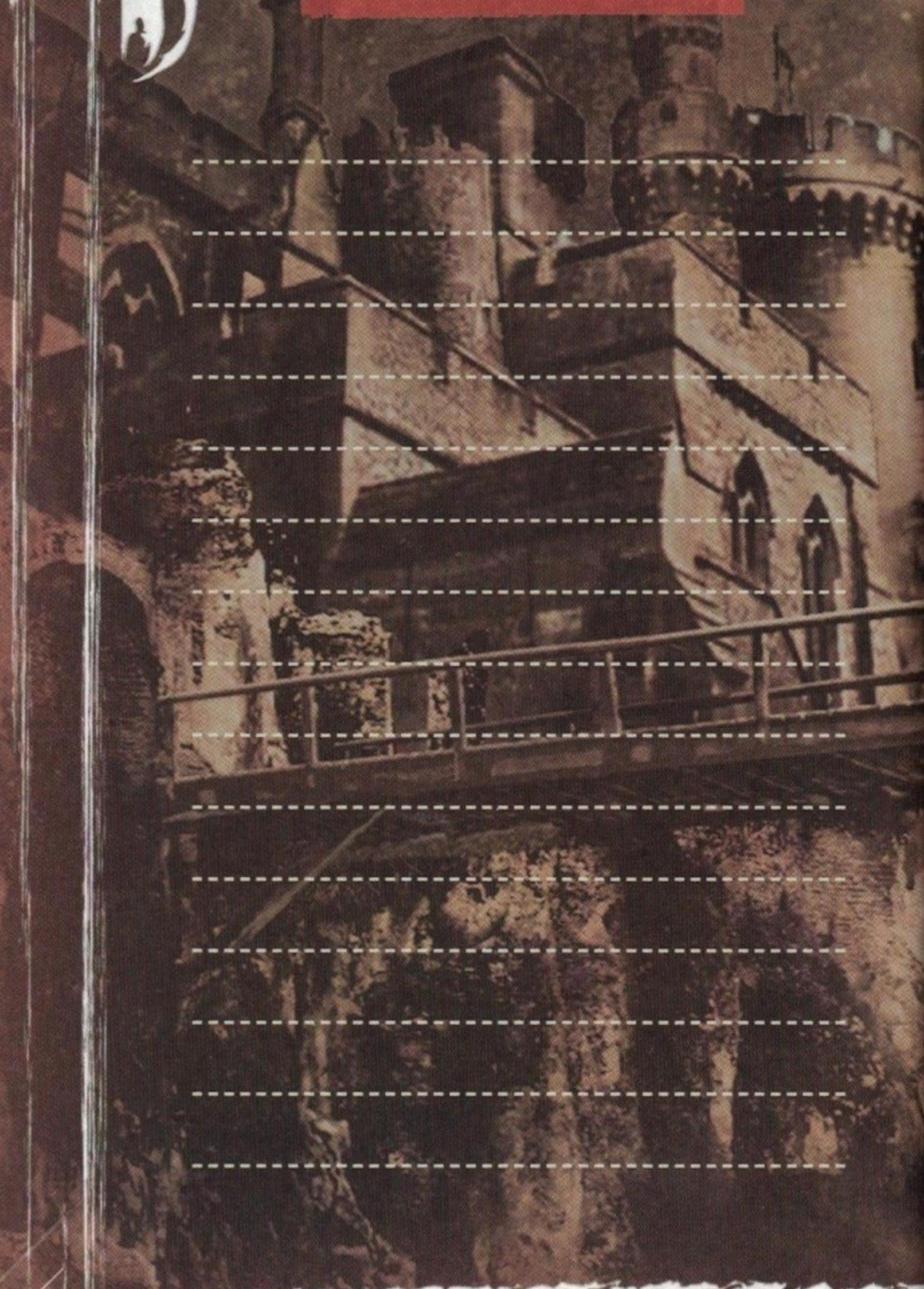
### FIGHTING

- ▼ Enemies fall down easier if you shoot out their legs and feet.
- ▼ If you time your action-button kicks right, they will hit other enemies around you as well as your target.
- ▼ You can shoot enemies through wooden doors.
- ▼ Shoot red barrels and drum cans to make them explode.

### WEAPONS DEALER

- ▼ You may be able to get more money out of items by combining different treasures than you would by selling the items individually.

# NOTES



Horizontal dashed lines for writing notes.

CAPCOM®

NUBYTECH™  
VIDEO GAME ACCESSORIES



## THE NIGHTMARE IS NOT OVER...

Neither zombie nor human... a new horror has come.

Pick up your Resident Evil™4 Chainsaw controller  
today and beat 'em... at their OWN game.



### resident evil

[www.residentevilcontroller.com](http://www.residentevilcontroller.com)



# RESIDENT EVIL: APOCALYPSE

THE SOUNDTRACK TO THE APOCALYPSE

FEATURING NEW & RARE TRACKS FROM:

SLIPKNOT

A PERFECT CIRCLE

THE CURE

DEFTONES

ROB ZOMBIE

THE USED

COLD

RAMMSTEIN

CRADLE OF FILTH

PLUS MUSIC FROM:

LACUNA COIL

THRICE

MASSIVE ATTACK

AND MORE



ALSO AVAILABLE:  
MUSIC FROM AND INSPIRED BY  
**RESIDENT EVIL**  
FEATURING MUSIC FROM:  
SLIPKNOT, MARILYN MANSON,  
METHOD MAN, MUDVAYNE,  
DEPECHE MODE & MORE



IN STORES NOW



IN STORES NOW

In Theatres Now

WWW.ROADRUNNERRECORDS.COM

ROADRUNNER RECORDS

© 2004 Roadrunner Records, Inc.

## "FANS OF THE GAME WILL LOVE THIS MOVIE"

-Steve Chupnick, WBFF TV Fox



### 2 Disc Special Edition DVD With over 6 hours of extras:

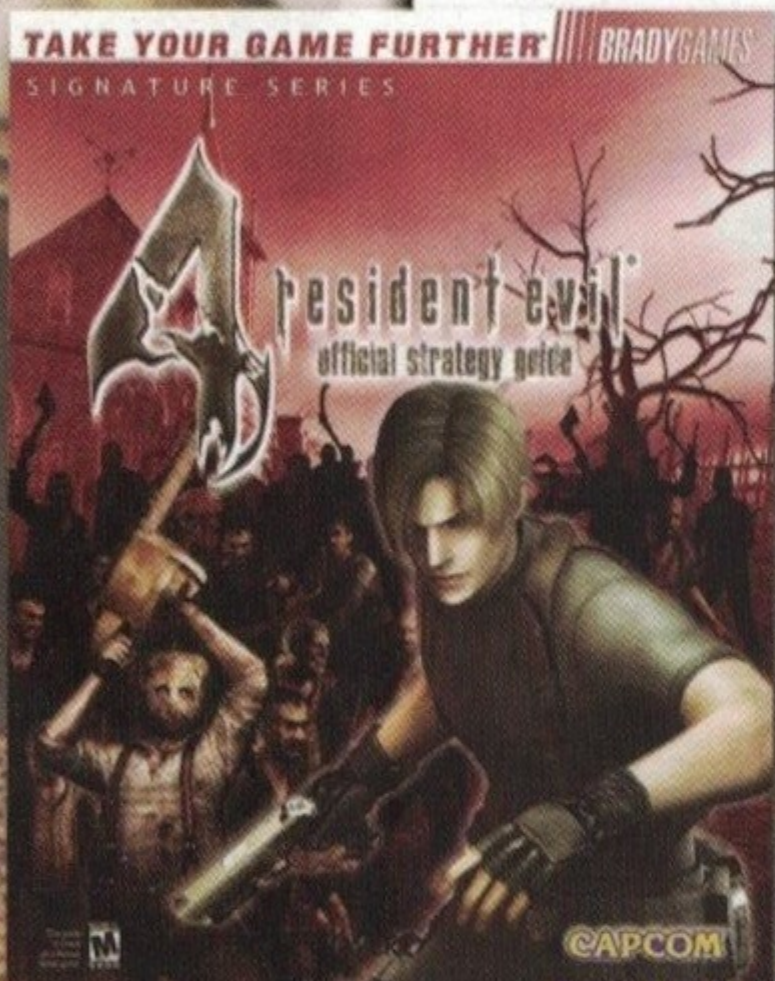
• Commentaries • Deleted Scenes • Outtakes • and Much More!

### Now Available on DVD

Go to [www.SonyPictures.com](http://www.SonyPictures.com) for more information

TAKE YOUR GAME FURTHER **BRADYGAMES**

# SURVIVE THE NEWEST FACE OF TERROR...



## with the Official Strategy Guide from BradyGames!

- Comprehensive Walkthrough Leads You Through All Scenarios.
- Expert Boss Tactics to Defeat All Beasts, Including the New Enemies.
- Highly Detailed Maps.
- Complete Item and Weapon Rosters, Bestiary, and Character Bios.
- Signature Series Guide Includes Bonus Coverage, an Exclusive Foldout and More!

To purchase BradyGames' *Resident Evil*® 4 Official Strategy Guide, visit your local electronics, book, or software retailer. Also available online at [www.bradygames.com](http://www.bradygames.com).

ISBN: 0-7440-0346-6

**CAPCOM**

**BRADYGAMES**  
TAKE YOUR GAME FURTHER

### CREDITS

Manual: Hanshow Ink & Image;  
Marketing: Todd Thorson, Bonnie Scott Denoyer, David Riley, Jack Symon, Sarah Felbinger, Laili Bosma, Carrie Root, Robert Johnson, Nate Williams and Rey Jimenez; Creative Services: Jennifer Deouville; Package Design: Michi Morita, Corey Tran and Scott Baumann;  
Translation: Thomas Huston and Brian Dunn; PR: Melinda Mongelluzzo, Arne Cual and Alicia Kim; Customer Service: Philip Navidad, Robert Hamiter and Jeffrey Leung.

### 90-DAY LIMITED WARRANTY

CAPCOM ENTERTAINMENT, INC. ("CAPCOM") warrants to the original consumer that this Nintendo GameCube Game Disc from CAPCOM shall be free from defects in material and workmanship for a period of 90 days from date of purchase. If a defect covered by this warranty occurs during this 90-day warranty period, CAPCOM will replace the Game Disc free of charge.

To receive this warranty service:

1. Notify the CAPCOM Consumer Service Department of the problem requiring warranty service by calling (408) 774-0400. Our Consumer Service Department is in operation from 8:30 a.m. to 5:00 p.m. Pacific Time, Monday through Friday.
2. If the CAPCOM service technician is unable to solve the problem by phone, he/she will instruct you to return the entire Game Disc to CAPCOM freight prepaid at your own risk of damage or delivery. We recommend sending your Game Disc by certified mail. Please include your sales slip or similar proof-of-purchase within the 90-day warranty period to:

CAPCOM

Consumer Service Department  
475 Oakmead Parkway  
Sunnyvale, CA 94085

This warranty shall not apply if the Game Disc has been damaged by negligence, accident, unreasonable use, modification, tampering or by other causes unrelated to defective materials or workmanship.

### REPAIRS AFTER EXPIRATION OF WARRANTY

If the Game Disc develops a problem after the 90-day warranty period, you may contact the CAPCOM Consumer Service Department at the phone number noted previously. If the CAPCOM service technician is unable to solve the problem by phone, he/she may instruct you to return the defective Game Disc to CAPCOM freight prepaid at your own risk of damage or delivery, enclosing a check or money order for \$20.00 (U.S. funds only) payable to CAPCOM. We recommend sending your Game Disc by certified mail. CAPCOM will replace the Game Disc, subject to the conditions above. If replacement Game Discs are not available, the defective product will be returned to you and the \$20.00 payment refunded.

### WARRANTY LIMITATIONS

ANY EXPRESS OR IMPLIED WARRANTIES, INCLUDING WARRANTIES OF MERCHANTABILITY AND FITNESS FOR A PARTICULAR PURPOSE, ARE HEREBY DISCLAIMED. IN NO EVENT SHALL CAPCOM BE LIABLE FOR SPECIAL, INDIRECT, CONSEQUENTIAL OR INCIDENTAL DAMAGES RESULTING FROM THE BREACH OF ANY EXPRESS OR IMPLIED WARRANTIES.

The provisions of this warranty are valid in the United States and Canada only. Some states and provinces do not allow limitations on how long an implied warranty lasts or exclusions of consequential or incidental damages, so the above limitations and exclusions may not apply to you. This warranty gives you specific legal rights, and you may have other rights, which vary from state to state or province to province.

### ESRB RATING

This product has been rated by the Entertainment Software Rating Board. For information about the ESRB rating, or to comment about the appropriateness of the rating, please contact the ESRB at [www.esrb.org](http://www.esrb.org).