

TW

the Tasmanian Tiger™



INSTRUCTION BOOKLET



Vimm's Lair

WARNING: PLEASE CAREFULLY READ THE PRECAUTIONS BOOKLET INCLUDED WITH THIS PRODUCT BEFORE USING YOUR NINTENDO® HARDWARE SYSTEM, GAME PAK OR ACCESSORY. THIS BOOKLET CONTAINS IMPORTANT SAFETY INFORMATION.

IMPORTANT SAFETY INFORMATION: READ THE FOLLOWING WARNINGS BEFORE YOU OR YOUR CHILD PLAY VIDEO GAMES

⚠ WARNING - Seizures

- Some people (about 1 in 4000) may have seizures or blackouts triggered by light flashes, such as while watching TV or playing video games, even if they have never had a seizure before.
- Anyone who has had a seizure, loss of awareness, or other symptom linked to an epileptic condition should consult a doctor before playing a video game.
- Parents should watch when their children play video games. Stop playing and consult a doctor if you or your child have any of the following symptoms:

| | | |
|----------------|-------------------------|-------------------|
| Convulsions | Eye or muscle twitching | Loss of awareness |
| Altered vision | Involuntary movements | Disorientation |

To reduce the likelihood of a seizure when playing video games:

1. Sit or stand as far from the screen as possible.
2. Play video games on the smallest available television screen.
3. Do not play if you are tired or need sleep.
4. Play in a well-lit room.
5. Take a 10 to 15 minute break every hour.

⚠ WARNING - Repetitive Motion Injuries

Playing video games can make your muscles, joints or skin hurt after a few hours. Follow these instructions to avoid problems such as Tendonitis, Carpal Tunnel Syndrome or skin irritation:

- Take a 10 to 15 minute break every hour, even if you don't think you need it.
- If your hands, wrists or arms become tired or sore while playing, stop and rest them for several hours before playing again.
- If you continue to have sore hands, wrists or arms during or after play, stop playing and see a doctor.

⚠ WARNING - Electric Shock

To avoid electric shock when you use this system:

- Use only the AC adapter that comes with your system.
- Do not use the AC adapter if it has damaged, split or broken cords or wires.
- Make sure that the AC adapter cord is fully inserted into the wall outlet or extension cord.
- Always carefully disconnect all plugs by pulling on the plug and not on the cord.
- Make sure the Nintendo GameCube power switch is turned OFF before removing the AC adapter cord from an outlet.

⚠ CAUTION - Motion Sickness

Playing video games can cause motion sickness. If you or your child feel dizzy or nauseous when playing video games with this system, stop playing and rest. Do not drive or engage in other demanding activity until you feel better.

⚠ CAUTION - Laser Device

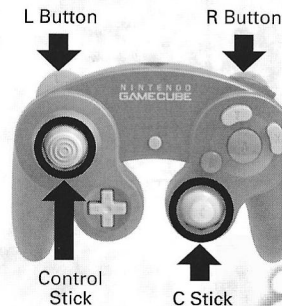
This is a Class I laser product. Do not attempt to disassemble the Nintendo GameCube. Refer servicing to qualified personnel only.

Caution - Use of controls or adjustments or procedures other than those specified herein may result in hazardous radiation exposure.

CONTROLLER NEUTRAL POSITION RESET

If the L or R Buttons are pressed or the Control Stick or C Stick are moved out of neutral position when the power is turned ON, those positions will be set as the neutral position, causing incorrect game control during game play.

To reset the controller, release all buttons and sticks to allow them to return to the correct neutral position, then hold down the X, Y and START/PAUSE Buttons simultaneously for 3 seconds.



This official seal is your assurance that Nintendo has reviewed this product and that it has met our standards for excellence in workmanship, reliability and entertainment value. Always look for this seal when buying games and accessories to ensure complete compatibility with your Nintendo product.



All Nintendo products are licensed by sale for use only with other authorized products bearing the Official Nintendo Seal of Quality.®



1 Player

THIS GAME SUPPORTS GAME PLAY USING ONE PLAYER AND CONTROLLER.



Memory Card

THIS GAME REQUIRES A MEMORY CARD FOR SAVING GAME PROGRESS, SETTINGS OR STATISTICS.



THIS PRODUCT HAS BEEN RATED BY THE ENTERTAINMENT SOFTWARE RATING BOARD. FOR INFORMATION ABOUT THE ESRB RATING, OR TO COMMENT ABOUT THE APPROPRIATENESS OF THE RATING, PLEASE CONTACT THE ESRB AT 1-800-771-3772, OR VISIT WWW.ESRB.ORG.

EVERYONE
VIOLENCE

LICENSED BY



NINTENDO, NINTENDO GAMECUBE AND THE OFFICIAL SEAL ARE TRADEMARKS OF NINTENDO.
© 2001 NINTENDO. ALL RIGHTS RESERVED.

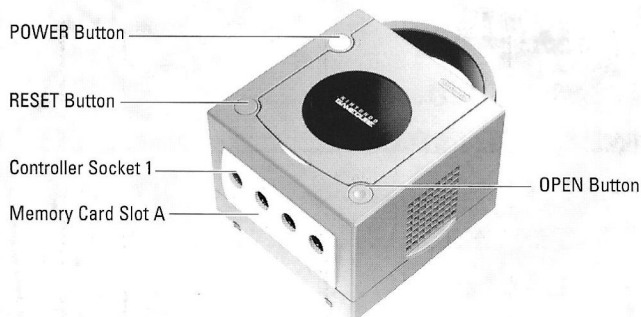


CONTENTS

| | |
|-------------------------------|----|
| GETTING STARTED | 4 |
| COMMAND REFERENCE | 5 |
| BASIC CONTROLS | 6 |
| INTRODUCTION | 7 |
| COMPLETE CONTROLS | 8 |
| SETTING UP THE GAME | 10 |
| MAIN MENU | 10 |
| STARTING A NEW GAME | 11 |
| OPTIONS | 11 |
| PLAYING THE GAME | 12 |
| GAME SCREEN | 12 |
| COLLECTIBLE OBJECTS | 13 |
| OTHER OBJECTS | 16 |
| PAUSE MENU | 17 |
| ZONES | 19 |
| RAINBOW CLIFFS | 19 |
| BLI BLI STATION | 20 |
| PIPPY BEACH | 21 |
| LAKE BURRIL | 22 |
| GATE ZONE | 23 |
| BONUS LEVEL | 23 |
| BOOMERANGS | 24 |
| SAVING AND LOADING | 27 |
| CREDITS | 28 |
| LIMITED 90-DAY WARRANTY | 31 |

GETTING STARTED

NINTENDO GAMECUBE™



1. Turn OFF the Nintendo GameCube™ by pressing the POWER Button.
2. Make sure a Nintendo GameCube™ Controller is plugged into Nintendo GameCube™ Controller Socket 1.
3. Press the OPEN Button to open the Disc Cover then insert the *TY the Tasmanian Tiger™* Nintendo GameCube™ Game Disc into the Optical Disc Drive. Close the Disc Cover.
4. Press the POWER Button to turn ON the Nintendo GameCube™ and proceed to the *TY the Tasmanian Tiger* title screen. If you can't proceed to the title screen, begin again at step 1.
5. At the *TY the Tasmanian Tiger* title screen, press **START/PAUSE** to advance to the Main menu (► p. 10).

NOTE: *TY the Tasmanian Tiger* does not support mono sound.

For more information about *TY the Tasmanian Tiger* and other EA GAMES™ titles, visit www.eagames.com.

COMMAND REFERENCE

NINTENDO GAMECUBE™ CONTROLLER CONFIGURATIONS



That's you, mate! My, you've got a fair set of choppers on ya—Boss Cass and those henchmen are in for it, dead-cert! Not that you go looking for trouble, but when somebody messes with your mates, you're not one to back down from a fight.

BASIC CONTROLS

Picking up and playing *TY the Tasmanian Tiger* is as easy as run, chomp, and fling. Here's all you need to know to get started on your big adventure.

GAME CONTROLS

| | |
|-------------|---------------|
| Move Player | Control Stick |
|-------------|---------------|

| | |
|------|----------|
| Jump | A Button |
|------|----------|

| | |
|-----------------|----------|
| Throw boomerang | B Button |
|-----------------|----------|

| | |
|------|----------|
| Bite | X Button |
|------|----------|

| | |
|---------------|----------|
| Action button | Y Button |
|---------------|----------|

| | |
|------------|-------------|
| Pause Game | START/PAUSE |
|------------|-------------|

MENU CONTROLS

| | |
|---------------------|---------------------------------|
| Highlight menu item | +Control Pad or Control Stick ⇄ |
|---------------------|---------------------------------|

| | |
|-------------------------|---------------------------------|
| Change highlighted item | +Control Pad or Control Stick ⇄ |
|-------------------------|---------------------------------|

| | |
|--------------------------|----------|
| Select/Go to next screen | A Button |
|--------------------------|----------|

| | |
|----------------------------------|----------|
| Cancel/Return to previous screen | B Button |
|----------------------------------|----------|

➤ For a more detailed list of commands, ➤ *Complete Controls* on p.8.



MAURIE

That'd be me, of course. I'm a bit of a looker myself, I must say—at least as far as sulphur-crested cockatoos go. I'll be sure to keep an eye on you during your adventure and lend a word or two of advice when I think you might need it.

INTRODUCTION

G'day mate! Things can be a bit disorienting here in the land down under, so let me remind you of who you are and what you're doing here.

You are TY, one of the last of the Tasmanian Tigers—or so you think. Raised by a family of Bilbies—what's a Bilby, you ask? I'll cover everything in good time, young 'un. As I was saying, you have only vague memories of your family and friends. You've always believed that the other Tazzy Tigers died long ago, leaving you all alone.

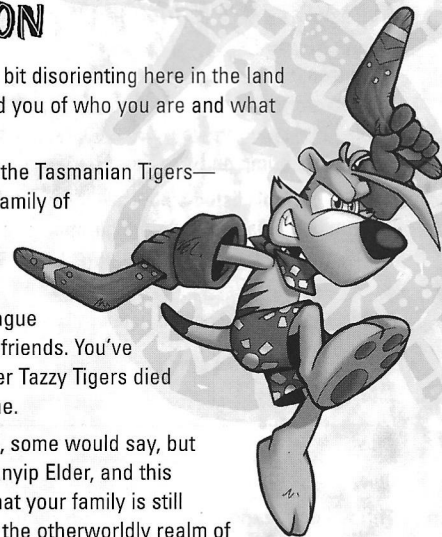
But then one day (by chance, some would say, but I say it's fate) you met the Bunyip Elder, and this strange character told you that your family is still alive! But, they're trapped in the otherworldly realm of the Dreamtime. Now don't get so upset, they're not stuck there forever. Or at least they needn't be...if you can save them.

For deep in the Australian outback there's a rocky outcrop, and this rocky outcrop is the portal—that's a doorway, my young cobber—to this Dreamtime realm. Carved into the ground on this outcrop is an image of the Tasmanian Tiger family, and surrounding that are five sockets in which ancient magical Talismans once lay. All you have to do is find these Talismans and place them in the sockets, and the portal to the Dreamtime realm will open.

Now don't go running off just yet, you little larrikin! I've not told you the bad news. You see, these Talismans have also caught the eye of an evil cassowary by the name of Boss Cass. Yes, *that* Boss Cass—the same one who trapped your family in the Dreamtime realm after they defeated him in battle many moons ago. What's worse, he's also locked up some of your Bilby family in cages across the outback. If you want to open the portal to the Dreamtime realm and rescue your family and friends, you must face Boss Cass and all the nasty henchmen he'll send your way.

Don't worry, mate, you won't be alone. An upstanding lad like yourself will always have friends to help him out along the way—including me, your old mate Maurie.

Now get out there and find those Talismans!



COMPLETE CONTROLS

My guess is you've got the basics down by now. Well, that's enough to get you started, but it's not enough to get you finished, not with all the perils that lay before you. You'd best learn all these moves or you could wind up a shrimp on Boss Cass' barbie.

- The controls listed below are for the default controller configuration. You can select a new configuration at the Controls screen (➤ *Controls* on p. 11).

NOTE: Default options are listed in **bold** in this manual.

ON LAND

| | |
|----------------------------------|---------------------------------------------------------------------|
| Move | Control Stick |
| Jump | A Button |
| Throw boomerang | B Button |
| Bite | X Button |
| Super Powered Charge Bite | X Button (press and hold to charge then release to activate) |
| Switch boomerangs | +Control Pad ↔ |
| Dive Bite | A Button then X Button |
| Glide | A Button then press and hold the A Button |

- The Control Stick makes you sneak, walk, jog, or run, depending on how hard you press it in the direction you want to move.

NOTE: You can't glide until you've picked up your second boomerang, which you can find in the **Two Up** level (➤ *Bli Bli Station* on p. 20).



After you collect 100 opals, or if you find the right power-up (➤ *Collectible Objects* on p. 13), you can perform a Super Powered Charge Bite. Not only does your bite become more powerful, but you can also chomp henchmen from a greater distance!

IN THE WATER

Unfortunately, you Tasmanian Tigers aren't the best swimmers. At first you can only dogpaddle—er, tigerpaddle—on the surface, and it's mighty slow going. Only after Rex the Platypus teaches you to swim at the Ship Rex level (➤ p. 20) can you swim faster and dive under water.

Swim on surface/Turn underwater Control Stick

| | |
|------------------------|---------------------------------------------------------------------------|
| Dive | A Button then X Button |
| Underwater swim | A Button (press and hold) |
| Swim faster | A Button (tap then hold) |
| Running dive | A Button then X Button (while running towards water's edge) |
| Throw Aquarang | B Button |

- You can hold your breath a long time, but not forever. Keep an eye on your air supply (➤ *Game Screen* on p. 12) to make sure it doesn't run out! For more information, ➤ *Bubbles* on p. 16.

NOTE: The Aquarang is the only boomerang that works under water. You earn the Aquarang after learning how to swim, then you switch to it automatically when under water.

MORE CONTROLS

| | |
|---------------------------|------------------------|
| Action button | Y Button |
| Advance dialogue | A Button |
| Skip dialogue | Y Button |
| Camera stick | C Stick |
| TY's View | L Button (hold) |
| Lock on enemy | R Button |
| Zoom camera in/out | Z Button |
| Pause game | START/PAUSE |



Use TY's View (press and hold the **L** Button) plus the Control Stick to aim your boomerang for precision throwing.

SETTING UP THE GAME

Set up the game the way you want before you set out on your big adventure. You'll be splashing through the billabong and 'rangin' frills in no time!

MAIN MENU

This is where it all begins, mate. From here you can set up your options or head straight for Rainbow Cliffs.



Load a previously-saved game
(▶ *Saving and Loading* on p. 27)

Start a new game
(▶ p. 11)

Go to Extras to access the Options screen (▶ p. 11) view the Making Of video, read about the characters you'll encounter on your quest in the Gallery, or see the Credits

EXTRAS

Two of the menu options on the Extras screen are unlocked when you first begin the game: MOVIES and GALLERY. When you find your first Picture Frame (▶ p. 15), you can access the Gallery. Once you collect everything there is to collect in the game, you unlock the Movies.

If there's a meaner cassowary in all of Australia, I don't want to meet him. Not only has Boss Cass banished the other Tasmanian Tigers to the Dreamtime realm and locked up the Bilbies in cages, he's also trying to ruin the very land itself through pollution and destruction. You've got to stop him, TY!

BOSS CASS



STARTING A NEW GAME

Here's what you need to do to make your way to Rainbow Cliffs.

TO START A NEW GAME:

1. From the Main menu, highlight NEW GAME and press the **A** Button.
 2. Select which Nintendo GameCube™ Memory Card to save your game to and press the **A** Button (if multiple Memory Cards are inserted).
 3. Highlight a game to save your game file to and press the **A** Button, or press the **Y** Button to continue without saving. The game begins!
- If you select a save game file for your new game, any previously-saved game in that file will be overwritten.

OPTIONS

You can adjust your options before you start your game or during it. Access the Options screen from the Extras screen off the Main menu, or from the Pause menu.

SOUND

Change the music and sound effects volume, and set your sound to **STEREO** or **SURROUND**.

SCREEN

Set your screen format to **NORMAL** or **WIDE** and turn Subtitles **ON/OFF**.

CONTROLS

Select from four controller configurations, turn the Rumble Feature **ON/OFF**, and set TY's view to **NORMAL** or **FLIPPED**.

BACK

Return to the Extras screen or Pause menu.

- Press the **B** Button to return to the Extras screen (or the Pause menu if you accessed the options screen from in-game) without saving your changes.



JULIUS

Strange as this chap is, I'm glad he's on our side. Julius is the most eccentric Koala I've ever met, but he's dinky-di with the machines. Just wait until you get a hold of one of his custom-made techno-rangs and you'll see what I mean.

PLAYING THE GAME

You're a brave tiger, TY, but I don't blame you if you feel a bit nervous about the task before you. I know I would if I were in your place! That Boss Cass is a nasty bloke, and the very land itself is fraught with danger. You've got a lot of terrain to cover and a lot of baddies to face, but I have faith in you, young 'un. You'll come through in the end, I'd wager.

But first thing's first. When you start off you find yourself at Rainbow Cliffs. Behind you is the rocky outcrop where you'll put the Talismans once you collect them. In front of you is the path to Bli Bli Station. Head down that way and we can meet Julius the Koala. He can open the portal to the Two Up level (► p. 20) and you'll be on your way.

GAME SCREEN

There you are, mate! Orient yourself with your surroundings so you don't get lost when you're out on walkabout.



When an exclamation mark appears, press the Action Button (Y Button)

AIR SUPPLY

When you're swimming under water, the health meter turns into an air supply meter. Swim to the surface for some air before it runs out or you'll be sleeping with the fishes! For more information, ► *Bubbles* on p. 16.

- Besides staying under water, getting knocked about by bad guys also reduces your air supply, just like your health meter.

COLLECTIBLE OBJECTS

There's a lot going on around you, and it's easy to get distracted. Stay focused and keep your eyes peeled for these objects.



If you collect everything in the game, then something good might happen.



In Two Up, some of the collectible items are impossible to reach until you've found your second boomerang.



TALISMANS

Long ago your family knocked the five mystic Talismans out of Boss Cass' hands just as he was sending them off to the Dreamtime. This caused an explosion that scattered the Talismans across the land. Now you're in a mad race against Boss Cass to get them back. Collect all five of them and bring them back to Rainbow Cliffs, and your Tasmanian Tiger family will be free to populate the world once more.



THUNDER EGGS

These volcanic beauties are the key to powering Julius' Talisman Machine. This machine locates and teleports the missing Talismans back to Rainbow Cliffs. Bonza! But you'll need at least 17 Thunder Eggs to get it to work. You can either find or earn Thunder Eggs by completing tasks, solving puzzles, or completing Time Attacks.

She's not even my species but it doesn't take another Dingo to see this is one beaut of a girl-friend you've got. She's a tough sheila and can handle her own, but make sure you're available to lend a helping paw, just in case.



SHAZZA



OPALS

There are plenty of Opals just laying about for the gathering, but there are a bunch more to be found, too. Try chomping open a crate if you don't believe me! Each level has 300 Opals, in fact. Collect them all and bring them to Julius' Opal machine and press the Action button (Y Button) to add another Thunder Egg to your collection.



Besides being pretty to look at, a trail of Opals can also lead you along the main path through a level.

- > You receive a Super Powered Charge Bite (> *Complete Controls* on p. 8) for every 100 opals you collect.



BILBIES

That nasty ol' Boss Cass has locked up your Bilby mates in cages all over the land—five on each level, to be precise. If you free all five on a level, you get a Thunder Egg.

- > Bilby cages are particularly resistant to boomerangs, so try giving them a good bite.



GOLDEN COGS

Your trusty boomerang has served you well, but it lacks the punch you need to get where you're going. Collect 15 Golden Cogs and bring them back to Julius in his lab at Rainbow Cliffs. He can then work them into his machine to make a new techno-rang for you. For more information on the different types of boomerangs, > p. 24.



RAINBOW SCALES

Collect all 25 of these little beauts for the Bunyip Elder at Rainbow Cliffs. You'll be mighty happy you did!



FOOD

If your health meter is running low (> *Game Info* on p. 18), just look for a picnic basket that might contain some food to munch on, and your meter will boost back up.



MAGNET

If you come across a magnet, pick it up and make Opal collecting a whole lot easier until the magnetic effect wears off.



SUPER POWERED CHARGE BITE

There's an easier way to get a Super Powered Charge Bite (> *Complete Controls* on p. 8) than collecting 100 Opals—just find one of these power-ups lying around.



TY HEAD

Now this is one of the stranger things I've seen in the Outback. If you happen to see something that looks like your own head floating about, make sure you grab it. This gives you one extra life, and with all the perils you've got to face, you'll need it.



PICTURE FRAMES

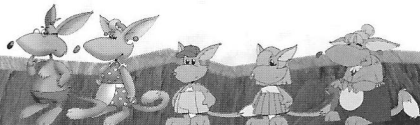
Somebody has apparently lost a few pictures from their art collection. I've seen more than one picture frame hidden in the outback. When you come across one, add it to your own collection and you can view it in the Gallery (> *Extras* on p. 10). Collect them all to see some special goodies!



Some picture frames are hidden inside transparent boxes. If you see a transparent box, break it open!

This awfully particular tree frog might not be the most loveable of blokes, but he's got quite the Thunder Egg collection so you'd best play up to his snootiness. I'm not sure how anybody could get that refined growing up in such a dank, dark billabong, but that's Dennis for you.

DENNIS



BILBIES

These Bilbies look meek, but they're strong in character. They took you in when you were just a wee orphan and raised you to the good bloke you are today. Now's your chance to repay them by freeing them from Boss Cass' crude cages.

OTHER OBJECTS

In a land this big and, well, weird, you're bound to come across some mighty odd things. Here are a few of them.



DUNNIES

What with all the pressure and excitement of your adventure, you're bound to have an accident or two while out and about. No worries, mate—that's what dunnies are for. If you happen to get clobbered or have a nasty fall or something and lose all your health, when you wake up you'll be relieved to find yourself on the last dunny you passed. So don't hold back—let 'er rip!

NOTE: When you exit your game and re-load it, you start at the beginning of the last level you were playing, rather than at the last dunny you passed.



MUSHROOMS

If you see a field of little green mushrooms, stand in the middle of them for a few seconds. Then get ready for a little trip as you find yourself instantly transported back to either the beginning or the end of the level!



BUBBLES

When you see a vent of bubbles on the ocean floor, position yourself over it for a few moments so you can breathe in the bubbles and restore your air supply (► *Game Screen* on p. 12).



FLOWERS

Evidently these giant beauts don't like the taste of Tasmanian Tigers. Walk into the middle of one and it swallows you up, but then a moment later it spits you into the air like you were a piece of rotten 'roo meat.



BUNYIP ELDER POWER UP

This glowing green beaut is about the most mystical thing you'll see in the land down under. Walk into the middle of it and channel the awesome power of the Bunyip Elder himself!

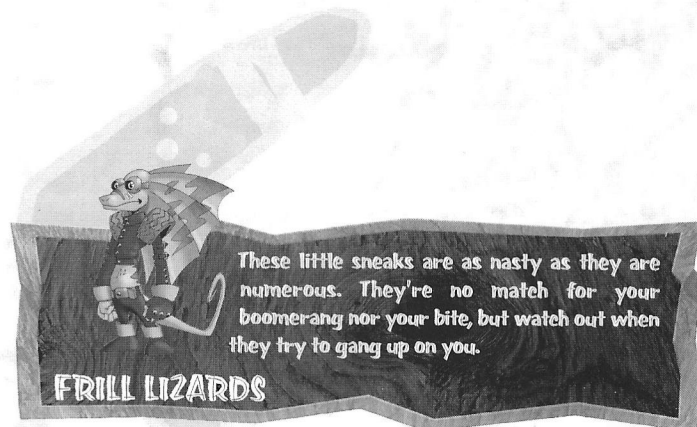
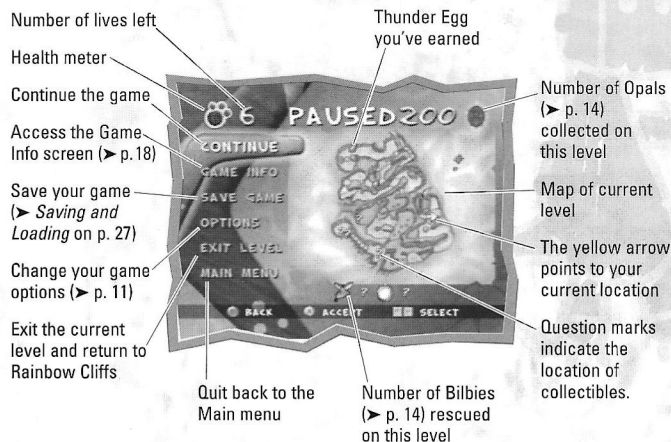
AND MUCH MORE

In addition to the objects mentioned in this section, there are many more items that you'll come across during your adventure. Look for geysers, pontoons, deck chairs, logs, and more.

PAUSE MENU

Even Tasmanian Tigers need to take a little breather once in a while. Access the Pause menu to take a break from the frenzied action, or to get your bearings in this vast, dangerous land.

► Press **START/PAUSE** during gameplay to access the Pause menu.



GAME INFO

Access the Game Info screen by pressing **START/PAUSE** to check up on your progress through the game. Totals provided are for the current level.



- ⇒ Press the **+Control Pad** or **Control Stick** ⇅ to access the boomerang descriptions. Press the **+Control Pad** or **Control Stick** ⇅ to view the different boomerangs currently in your arsenal.
- ⇒ Press the **+Control Pad** or **Control Stick** ⇅ to access the Game Totals screen. The big percentage number tells you your progress toward your ultimate goal of freeing the Tasmanian Tigers.
- ⇒ Press the **L Button** or **R Button** to move between Game Info screens for other levels. This can help you figure out where you've still got Thunder Eggs and Golden Cogs to find.
- ⇒ Press the **B Button** to return to the Pause menu.

ZONES

Australia is a vast, wild land. Along your adventure you're going to see it at its biggest and most beautiful—but also its scariest. It's a diverse land with many strange and wonderful creatures, but not all of them are going to wish you g'day. And if the nastier critters aren't enough to put a rumple in your fur, there's also the environment itself to look out for. Huge cliffs, quicksand, runaway boulders—sometimes it seems the whole place has gone berko!

The following is a run-down of the four zones you must make your way through, with a little information on each of their levels. Every zone has a boss level that will put your biting and 'ranging abilities to the test.

RAINBOW CLIFFS



Rainbow Cliffs

Rainbow Cliffs is your haven—there are no Frill Lizards, Red Kangaroos, or any Boss Cass henchmen here to ruin your day. This is a great place to get used to your controls and do some exploring.

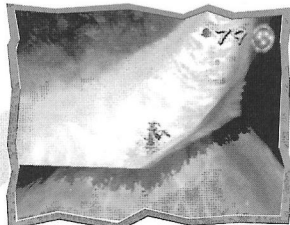
Rainbow Cliffs holds the portals to three levels and is also the gateway to all the other zones. The other zones are blocked off, and you need special boomerangs to clear the way. Use that clever brain of yours to figure out which 'rangs can help you get into each of the zones.

There are three areas in Rainbow Cliffs that are a jumping off point for you to do your adventuring: Bli Bli Station, Pippy Beach, and Lake Burril.

BLI BLI STATION



Two Up



Walk In The Park

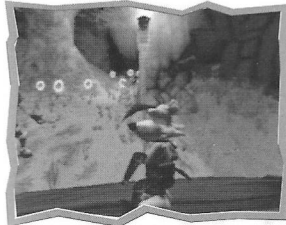


Ship Rex

LEVELS

| LEVEL | ENVIRONMENT | SOME BAD GUYS YOU'LL SEE |
|------------------|--------------|---------------------------------------|
| Two Up | Billabong | Frill Lizards, Red Kangaroos, Salties |
| Walk In The Park | Rainforest | Blue Tongues, Leeches, Rhino Beetles |
| Ship Rex | Barrier Reef | Sharks, Eels, Giant Crabs |
| Bull's Pen | ??? | ??? |

PIPPY BEACH



Bridge On The River TY



Snow Worries



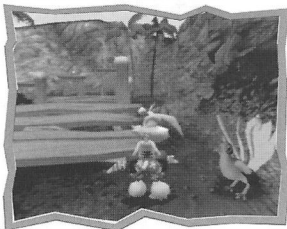
Outback Safari

A wall of ice blocks your path to Pippy Beach and its three portals.

LEVELS

| LEVEL | ENVIRONMENT | SOME BAD GUYS YOU'LL SEE |
|------------------------|----------------|---------------------------------------------|
| Bridge On The River TY | Billabong | Bats, Trapdoor Spiders, Cockroaches, Skinks |
| Snow Worries | Snowy Mountain | Frills, Blue Tongues, Snow-Roos |
| Outback Safari | Deep Outback | Bike Frills |
| Crikey's Cove | ??? | ??? |

LAKE BURRIL



Lyre, Lyre, Pants On Fire



Beyond the Black Stump



Rex Marks The Spot

If you want to access Lake Burril and its three portals you're going to have to get by a pile of red-hot flaming logs.

LEVELS

| LEVEL | ENVIRONMENT | SOME BAD GUYS YOU'LL SEE |
|---------------------------|-----------------|--------------------------------------------------|
| Lyre, Lyre, Pants On Fire | Rainforest | Tics, Lil' Neddy, Geckos |
| Beyond the Black Stump | Snowy Mountains | Frill Lizards, Spiders, Blue Tongues, Snow-Roos |
| Rex Marks The Spot | Barrier Reef | Barracudas, Sea Snakes, Frill Lizards, Octopuses |
| Fluffy's Fjord | ??? | ??? |

GATE ZONE



Cass' Pass

Just one big, impressive gate stands between you and Boss Cass' stronghold. Once you've gotten through the gate, don't fool yourself into thinking the hard part's behind you—it's all uphill from here.

LEVELS

| LEVEL | ENVIRONMENT | SOME BAD GUYS YOU'LL SEE |
|------------------|---------------------------------------|--------------------------|
| Cass' Pass | Rainforest | Skinks, Ninja Geckos |
| Cass' Crest | No one has ever made it this far! | Unknown... |
| The Final Battle | You'll have to get there to find out. | Be ready for anything. |

BONUS LEVEL

If you collect everything throughout the game, you will be able to access the special Bonus Level! After you've unlocked the level, just head to the cave near the waterfall in Rainbow Cliffs and enter the portal.

These reptilian bullies are bigger than Frill Lizards, not to mention meaner and tougher. They may not be the worst henchmen Boss Cass throws your way, but just the same, I wouldn't want to meet one in a dark billabong.

BLUE TONGUES



BOOMERANGS

After a set of powerful, shiny chompers, the boomerang is the weapon of choice for Tasmanian Tigers like yourself. Bring Golden Cogs to Julius at his lab at Rainbow Cliffs so he can plug them into his Cogulacious Boomerangerus Extrapolator and build new techno-rangs for you. Julius can also harness the excess energy from the Talisman Machine to create new elemental 'rangs. You might even receive one as a gift! Here are the different rangs you can earn and their unique properties.

- You can also access information on the boomerangs you have in your current arsenal during the game through the Game Info screen (▶ p. 18).



BOOMERANG

This is your basic ancient gum tree model. No bells and whistles, just a good, reliable boomerang—and mighty effective in the paws of the right Tazzy Tiger.



AQUARANG

This is the only 'rang that you can use underwater. Its hydrodynamic design lets it slice through the water like a normal boomerang flies through the air. Use a pair of these as fins and you yourself can zip through the deep blue like a greased-up platypus.



FROSTYRANG (ELEMENTAL 'RANG)

This 'rang doesn't pack a lot of punch, but it's a great strategic weapon. How's that, you say? You can use it to freeze enemies that are otherwise impervious to boomerangs, then move in and give 'em a good chomp!



Throw a Frostyrang into a body of water to create a small iceberg that you can stand on.



FLAMERANG (ELEMENTAL 'RANG)

Heat things up with a 'rang o' fire! Naturally they can cut through ice, but I've heard that they're also great for burning through sticky spider webs.



ZAPPYRANG (ELEMENTAL 'RANG)

The power of lightning is contained within this electrifying boomerang. Use it when you want to give your enemies, or perhaps a piece of machinery, a supercharged jolt.



ZOOMERANG (TECHNO-RANG)

This little beaut lets you do some long-distance 'ranging. But here's the best part. Switch to TY's View (press and hold the L Button). Everything looks normal, right? Now press the C Stick ⤵—it's got a built-in telescope aimer! Bonza! If you've zoomed in a bit too far on an ugly henchman, just press the C Stick ⤴ to zoom back out.



MULTIRANG (TECHNO-RANG)

What this boomerang lacks in quality it makes up for in quantity. Although it may not travel as far or as fast as other 'rangs, you can unleash a whole flurry of them at once. Boss Cass' henchmen would have to be pretty quick to escape that barrage.



INFRARANG (TECHNO-RANG)

This boomerang lets you see as well as a wedge-tailed eagle. Listen carefully when you're holding this 'rang. It has a built-in sonar that beeps if there's anything "special" close by. Just switch to TY's View (press and hold the L Button) and you'll see things you normally wouldn't with your Tasmanian Tiger eyes. Take a look around with them once in a while. You might be surprised at what you discover.

I don't know why everybody thinks these yobbos are so cute! They're just downright rotten if you ask me. Keep clear of those powerful legs of theirs or they might kick you way out to Woop Woop!

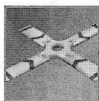


RED KANGAROOS



MEGARANG (TECHNO-RANG)

Julius really outdid himself on this one. This crafty lil' 'rang can actually recognize bad guys and crates. It homes in on them and delivers a bull's-eye knockout punch. Those bad guys will think the 'rang had their name on it—and they won't be far off the mark!



KABOOMARANG (TECHNO-RANG)

This 'rang is made from the rare Outback element Exploderium, which is just as spectacular as it sounds. Launch one of these rippers and watch the fireworks!



CHRONORANG (TECHNO-RANG)

Put the bad guys in a time warp! This is a great weapon to use on baddies that are impervious to other 'rangs. Hit them with a Chronorang and watch them move as slowly as a koala in quicksand. Then, move in for the bite.



DOOMARANG

The Doomarang is only available in the Final Battle, and boy, are you going to need it! Just launch this seein'-eye 'rang and guide it by remote control to those hard-to-reach places. Boss Cass won't know what hit him!

Most folks don't even believe in the Bunyips, those weird creatures that are said to be half beast, half spirit. But if you say you saw one, TY, that's good enough for me.

THE BUNYIP ELDER



SAVING AND LOADING

As energetic as Tasmanian Tigers are, you're going to have to take a break from all the excitement and adventure at some point. Save your game and then load it later to pick up where you left off.

NOTE: Never insert or remove a Nintendo GameCube™ Memory Card when loading or saving files.

SAVING

TO SAVE A GAME:

1. During gameplay, press **START/PAUSE** to access the Pause menu.
2. Highlight **SAVE GAME** and press the **A** Button.
3. Press the **+Control Pad** or **Control Stick** \updownarrow to highlight the Memory Card you wish to save to and press the **A** Button.
4. Press the **+Control Pad** or **Control Stick** \leftrightarrow to highlight a save location then press the **A** Button.
5. The game asks you if you wish to overwrite the selected saved game. Highlight **YES** and press the **A** Button to save your game.

NOTE: Every time you collect a **Golden Cog** or a **Thunder Egg**, the game saves automatically.

LOADING

TO LOAD A GAME:

1. From the Main menu, highlight **LOAD GAME** and press the **A** Button.
2. Press the **+Control Pad** or **Control Stick** \updownarrow to highlight the Memory Card you wish to load from and press the **A** Button.
3. Press the **+Control Pad** or **Control Stick** \leftrightarrow to highlight a game to load then press the **A** Button.

AN AMAZING CAST OF CHARACTERS

Besides all the characters I've told you about here, there are many others you'll come across during your adventure, including Ranger Ken, Lenny, Rex, Elle, Sly, Shadow, Bull, Crikey, Aurora, Neddy, and Sheila. Take the time to find out who your real friends are.

CREDITS

KROME STUDIOS

Chief Executive Officer: Robert Walsh
Development Director: John Passfield
Creative Director: Steve Stamatiadis
Studio Manager: Andy Green
Executive Producer: Robert Walsh
Producer: Andy Green
Production Assistants: Lindsay Parmenter, Robert Watson, Jess Sterzl

GAME DESIGN

Game Design: Steve Stamatiadis, John Passfield
Additional Design: Andy Green, Robert Walsh, Robert Watson, Matt Ditton, Bruno Rime, Jason Stark, Matt McKnight, Jeff Hasson

PROGRAMMING

Lead Programmer: Steve 'Sly' Williams
Assistant Lead Programmer: Dave Cobb
Programmers: Robert Crane, Chris Lacy, Jason Schroder, Brad Jackson, Ola Olsson, Tom Lowe, Matt Peers, James Saito, Gerard van der Linden, Damian Stewart, Daniel Eden, John Passfield, Andy Green

ART TEAM

Lead Artist: Steve Stamatiadis
Lead Level Artist: Matt Ditton
Lead Props and Models: Bruno Rime
Lead Animator: Jason Stark
Artists: Karl Stotschek, John Aitchison, Robert Butterworth, Sadie Peet, Brendan Rogers, Hamish McKenzie, Glen Harris, Tony Parmenter, Artur Vill, Alison Riley, Andrew Clark, Caleb Trott, Anita Johnston, Jared Pullen, Nicole Stark, Jason Christie, Jason Dalton, Tim Berry, David MacMinn, Louis Johnson, Celine Bernardeau, Daniel Harris, Pete Mullins, Tim Hancox, Andrew Silke, James Bennett, Jason Cross

Concept Art and Character Design: Steve Stamatiadis
Additional Concept Art: Bruno Rime
Texture Department: Bruno Rime, Mark Douglas, Pete Mullins

SOUND

Audio Engineer: George Stamatiadis
Sound Design: George Stamatiadis
Main Audio Programmer: Jason Schroder
Translation Co-ordinator: Lindsay Parmenter
Music: George Stamatiadis
Recorded at: Krome Studios, Brisbane, Australia
Additional Music Recorded at: Sully Music, Melbourne, Australia

Guitar: Simon Hosford
Keyboards: Peter Sullivan, George Stamatiadis
Bass: Danny Sullivan
Sampling: Grainger Lock
Engineer: Damien Montalto

ANIMATION

Direction and Storyboards: Steve Stamatiadis
Cut Scene Lead: Lindsay Parmenter
Cut Scene Animators: Glen Harris, Hamish McKenzie, Jason Dalton, Nicole Stark, Sadie Peet, Caleb Trott
Cut Scene Builders: Lindsay Parmenter, Andrew Maclean

VIDEO PRODUCTION

Video Editors: Tony Parmenter, David MacMinn
Documentary: Brian Vining

LEVEL BUILDERS

Game Play Director: John Passfield
Lead Level Builder: Robert Watson
Level Builders: Andrew Maclean, Daniel Betts, David York, Ken Williamson, Lindsay Parmenter, Peter Grogan

GAME EDITOR SOFTWARE

Programming: Rob Crane

MERKURY ENGINE

Programming Team: Tony Ball, James Podesta, Dave Pevreal, Ashley Davis, Anthony Wigan, Clinton Dull, Jonathan Lawrence
Documentation: Daniel Eden

ADMINISTRATION

Office Manager: Marcia Watson
Office Assistant: Donna Shaw
Office Handyman: Grant Roberts

TECHNICAL SUPPORT

Hardware Support Manager: Jason Muir
Additional Hardware Support: John Barry, Damian Stewart, Peter Steel, Grant Roberts, Lindsay Parmenter

QUALITY ASSURANCE

QA Manager: John Barry
QA Leads: Guy Cooper, Jason Cross
Senior QA: Hugh Winwood-Smith
QA Staff: Andrew Bergmann, Chris Palu, Daniel Cox, Daniel Rogers, Jason Harwell, Justin Roberts-Thompson, Kylie Downs, Luke Ilett, Matt McKillop, Nic Wechter, Sal Fazio

SPECIAL THANKS

Andrew Wright
Darren Atherton
David Rosenbaum
All the kids who helped out with focus testing: Alia, Dennis, Callum, Erin, Michael, Oliver, William, Patrick, Arrow, Sam, Rowan, Nick, Michael, Skylar, Elmo.
Kev at the pizza store, Andrew at the toy store and all the staff at the local eateries.
All Big Fish Audio and Peter Sproecker.
...and all of the partners and families that put up with us never being there while we were working on this title.
Welcome to the world Cameron Alexander McKnight, 8/12/2002 12:42am, 8lbs 7oz.

IN MEMORY OF

Mitch Miles
Tim Eifert

ELECTRONIC ARTS

Supervising Producer: Matt McKnight
Associate Producer: Jeff Hasson
Director, Business and Product Development: Frank Pape
Development Director: Roy Tessler
Senior Product Manager: Steve Perkins
Marketing Assistant: Anthony Caiazzo
Public Relations: Tim McDowd, Jeane Wong
International Production Specialist: John Pemberton, Jonathan Silverman
Production Assistant: Andi Gotard
Package Project Management: Angela Santos
Package Art and Design: Ayzenberg, Anthony Caiazzo
Package Illustration: Ayzenberg, Anthony Caiazzo
Documentation: Dan Davis
Documentation Layout: Christopher Held
Mastering: Michael Deir, Chris Espiritu, Kima Hayuk, Michael Yasko, Roger Metcalf
Customer Quality Control: Tony Alexander, Dave Knudson, Darryl Jenkins, Andrew Young, Anthony Barbagallo, Simon Steel, Russell Medeiros, Eron Garcia
Lead Tester: David Choe
Core Testers: Brian Himmel, Alfred Cimino, Leticia Duenas, Gene Duenas, Jeremy Dietrich, William Chow, Mark Walker, Heather Walls, Seamus Enright, John Do

SPECIAL THANKS

Celeste Murillo, Edwin Caparaz, Kathy Frazier, Tom Frisina, Josh Hendren, Ken Balthaser, Jamil Dawsari, Dave Ross, Mike Ress, Evelyn Walker, Frank Sagnier, Jonathan Bunney, Vicki Gordon, Monty Finefrock, Nancy Smith, Steve Bene, John Riccitiello, Janene Boughton, Ken Rogers, Kim Broadhurst, Rosemarie Dalton, Bruce McMillan, John Schappert, Gerhard Florin, Nigel Sandiford, Steve Miller, Anouk Pape, Per Neumann, Film Finance, David Rosenbaum

THE CAST

TY the Tasmanian Tiger: Stig Wemyss

Maurie the Sulphur Crested Cockatoo: Terry Gill

Shazza the Dingo: Martine Shea

Boss Cass: Clement Von Franckenstein

Rex the Platypus: Danny McMaster

Elle the Platypus: Kym Wilson

Sheila the Koala: Debbie Mae-West

Julius the Koala: Paul Flaherty

Neddy the Bully: David Lodge

Dennis the Green Tree Frog: Darren Jenings

Ranger Ken: Ken Campbell

Sly: Stig Wemyss

Lenny the Lyrebird: Terry McGovern

Wedgewood the Pirate: Bill Farmer

The Bunyip Elder: J.S. Gilbert

Shadow the Ghost Bat: Kate Fitzpatrick

Aurora the SeaDragon: Kym Wilson

Boonie: Darren Jenings

Bilby Boy: Joe Bertini

Rex's Mate the Seahorse: Kristy Raymond

The Frill-Necked Lizard: Bill Farmer

The Blue Tongue: J.S. Gilbert

Andy the Wombat: Matt Hill

Dad: Stig Wemyss

Bro: Stig Wemyss

Script: John Passfield

Narrative and Script Consultant: Lane Raichert, Raichert Media

Additional Dialog: George Stamatiadis

Voice Director (US): Lane Raichert, Raichert Media

Voice Director (Melbourne):

James Tutton, Andrew Neil

Sound Engineer (San Francisco):

Malcolm Sherwood

Sound Editor (San Francisco):

Jim LeBrecht, Berkeley Sound Artists

Sound Engineer (Los Angeles):

Ernie Sheesley

P.A. (Los Angeles): Eric Lewis

Editor (Los Angeles): Elliot Anders

Extra Voices Recorded at Krome Studios:

Tony Parmenter, Robert Butterworth, Louis Johnston, George Stamatiadis, Mark Richardson, Steve Stamatiadis, John Passfield, Nicole Stark

ANIMAL LOGIC

Executive Producer: Michael Twigg

Producer: Sarah Hiddlestone

3D Supervisor: Jeremy Howdlin

Lead Animator: Matthew Smith

Lead Character Animator: Brett Margules

Technical Director: Alex McLeod

Animators: Scott Tansley, Alex Weight, Geoff Valent, Robert Byrne, Greg Petchkovsky, Chris Debney, Alexy Scollay, Serge Kovalenko, Octarvio De Lellis

Matte Painting Artist: Dael Oates

Video Operations Technician:

Chris McHugh

REEL IMAGE PTY LTD

Senior Creative Designer: Jason Bowman

Senior Video Editor: Kaine Crombie, Dion Rowe

LIMITED 90-DAY WARRANTY

ELECTRONIC ARTS LIMITED WARRANTY

Electronic Arts warrants to the original purchaser of this product that the recording medium on which the software program(s) are recorded (the "Recording Medium") and the documentation that is included with this product (the "Manual") are free from defects in materials and workmanship for a period of 90 days from the date of purchase. If the Recording Medium or the Manual is found to be defective within 90 days from the date of purchase, Electronic Arts agrees to replace the Recording Medium or Manual free of charge upon receipt of the Recording Medium or Manual at its service center, postage paid, with proof of purchase. This warranty is limited to the Recording Medium containing the software program and the Manual that were originally provided by Electronic Arts. This warranty shall not be applicable and shall be void if, in the judgment of Electronic Arts, the defect has arisen through abuse, mistreatment or neglect.

This limited warranty is in lieu of all other warranties, whether oral or written, express or implied, including any warranty of merchantability or fitness for a particular purpose, and no other representation of any nature shall be binding on or obligate Electronic Arts. If any such warranties are incapable of exclusion, then such warranties applicable to this product, including implied warranties of merchantability and fitness for a particular purpose, are limited to the 90-day period described above. In no event will Electronic Arts be liable for any special, incidental, or consequential damages resulting from possession, use or malfunction of this Electronic Arts product, including damage to property, and to the extent permitted by law, damages for personal injury, even if Electronic Arts has been advised of the possibility of such damages. Some states do not allow limitation as to how long an implied warranty lasts and/or exclusions or limitation of incidental or consequential damages so the above limitations and/or exclusion of liability may not apply to you. In such jurisdictions, the Electronic Arts' liability shall be limited to the fullest extent permitted by law. This warranty gives you specific rights. You may also have other rights that vary from state to state.

RETURNS WITHIN THE 90-DAY WARRANTY PERIOD

Please return the product along with (1) a copy of the original sales receipt, showing the date of purchase, (2) a brief description of the difficulty you are experiencing and (3) your name, address and phone number to the address below and Electronic Arts will mail a replacement Recording Medium and/or Manual to you. If the product was damaged through misuse or accident, this 90-day warranty is rendered void and you will need to follow the instructions for returns after the 90-day warranty period. We strongly recommend that you send your product using a traceable delivery method. Electronic Arts is not responsible for products not in its possession.

RETURNS AFTER THE 90-DAY WARRANTY PERIOD

If the defect in the Recording Medium or Manual resulted from abuse, mistreatment or neglect, or if the Recording Medium or Manual is found to be defective after 90 days from the date of purchase, please return the product along with (1) a check or money order for \$15.00 made payable to Electronic Arts, (2) a brief description of the difficulty you are experiencing and (3) your name, address and phone number to the address below, and Electronic Arts will mail a replacement Recording Medium and/or Manual to you. We strongly recommend that you send your product using a traceable delivery method. Electronic Arts is not responsible for products not in its possession.

EA WARRANTY MAILING ADDRESS

Electronic Arts Customer Warranty
P.O. Box 9025
Redwood City, CA 94063-9025

EA WARRANTY CONTACT INFO

E-mail and Website: <http://techsupport.ea.com>
Phone: (650) 628-1900

NOTICE

Electronic Arts reserves the right to make improvements in the product described in this manual at any time and without notice. This manual and the software described in this manual are copyrighted. All rights are reserved. No part of this manual or the described software may be copied, reproduced, translated, or reduced to any electronic medium or machine-readable form without the prior written consent of Electronic Arts.

NEED A HINT? Call the EA HINTS & INFORMATION HOTLINE for recorded hints, tips, and passwords 24 hours a day, 7 days a week! In the US, dial 900-288-HINT (4468). 95c per minute. In CANADA, dial 900-451-4873. \$1.15 (Canadian) per minute. If you are under 18, be sure to get a parent's permission before calling. Hotline requires a touch-tone telephone. Call length determined by user; average length is four minutes. Messages subject to change without notice.

TECHNICAL SUPPORT—If you need technical assistance with this product, call us at (650) 628-4322 Monday through Friday between 8:30–11:45 AM or 1:00–4:30 PM, Pacific Standard Time. **No hints or codes are available from (650) 628-4322. You must call the EA HINTS & INFORMATION HOTLINE for hints, tips, or codes.**

HOW TO REACH US ONLINE

E-mail and Website: <http://techsupport.ea.com>
FTP: <ftp.ea.com>

If you live outside of the United States, you can contact one of our other offices.

In **Australia**, contact:

Electronic Arts Pty. Ltd.
P.O. Box 432
Southport Qld 4215, Australia

In the **United Kingdom**, contact:

Electronic Arts Ltd.
P.O. Box 181
Chertsey, KT16 0YL, UK
Phone (0870) 2432435

In **Australia**: For Technical Support and Game Hints and Tips, phone the EA HOTLINE: 1 902 261 600 (95 cents per min.) CTS 7 days a week 10 AM–8 PM. If you are under 18 years of age parental consent required.

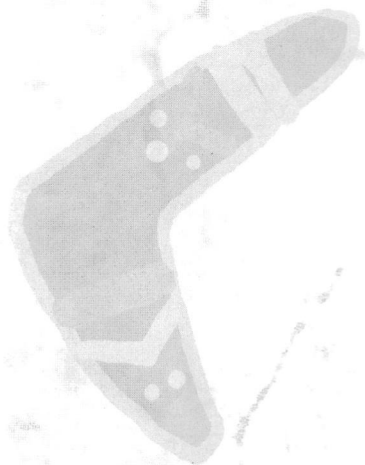
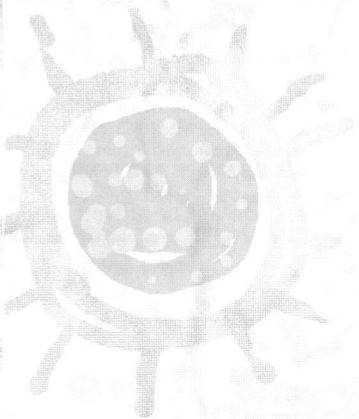
© 2002 Krome Studios Pty Ltd. All rights reserved. TY the Tasmanian Tiger and the Krome Studios logo are trademarks of Krome Studios Pty Ltd.

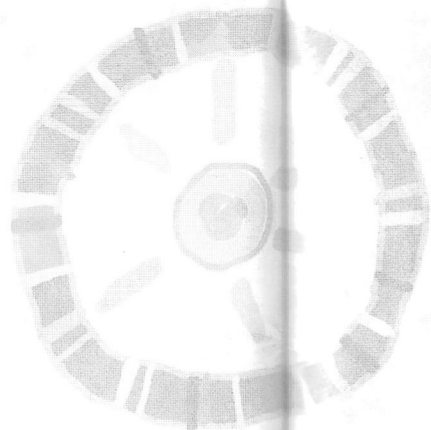
Electronic Arts, EAGAMES, and the EAGAMES logo are trademarks or registered trademarks of Electronic Arts Inc. in the U.S. and/or other countries. All rights reserved.

Nintendo GameCube is a trademark of Nintendo.

All other trademarks are the property of their respective owners.

EA GAMES™ is an Electronic Arts™ brand.





PROOF OF PURCHASE
TY the Tasmanian Tiger



DARE TO RETURN TO HOGWARTS™

Be Harry Potter™ in a richer, deeper adventure—explore an authentic, immersive Hogwarts.

FEATURES

- Advanced second-year magic, challenging quests, and dangerous adversaries
- Greater depth—featuring Wizard Duels, controllable spell power, and Quidditch™ leagues
- Take flight—hop on your Nimbus Two Thousand™ and freely explore Hogwarts
- Connect with the Game Boy® Advance Chamber of Secrets game to extend your adventure (Game Boy Advance game and connecting cable required)



Harry Potter
AND THE
CHAMBER
OF SECRETS™

Console—Action Adventure Game

Electronic Arts Inc. 209 Redwood Shores Parkway, Redwood City, CA 94065.
Electronic Arts, EA GAMES and the EA GAMES logo are trademarks or registered trademarks of Electronic Arts Inc. in the U.S. and/or other countries. All rights reserved. All other trademarks are the property of their respective owners.
EA GAMES™ is an Electronic Arts™ brand.

HARRY POTTER, characters, names and related indicia are trademarks of and © Warner Bros.

Harry Potter Publishing Rights © J.K. Rowling.

WBIE LOGO: ™ & © Warner Bros.

(s02)

1454205

PRINTED IN USA

