

New

**NATSUME Consumer Hot Line!**

**Call 1-900-820-HINT**

.95 cents per minute charge, minors under the age of 18 must have parental permission before calling. Touch-tone phone required.

For Game tips on Pocky & Rocky, and other Natsume titles, as well as what the game Magazines have to say about Pocky & Rocky and info on upcoming Natsume titles.

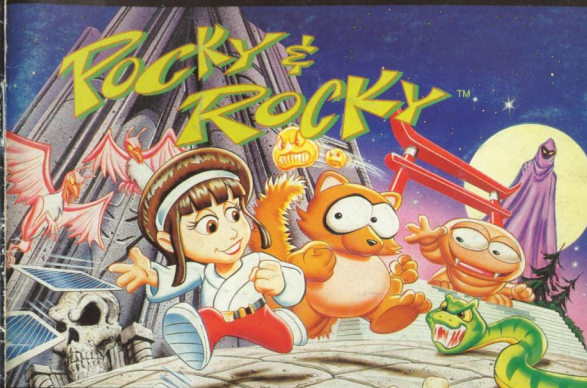
**NATSUME**

1243A HOWARD AVENUE  
BURLINGAME, CA 94010

<http://www.replacementdoes.com>

PRINTED IN JAPAN

SNS-KK-USA



**INSTRUCTION BOOKLET**

**NATSUME**

**SUPER NINTENDO**  
ENTERTAINMENT SYSTEM

## NOTES FROM NATSUME

# Rocky & Rocky™

Thank you for purchasing Pocky & Rocky for the Super Nintendo Entertainment System. We are proud and delighted that you chose to add our title to your video game library. Please read this manual to assure your complete enjoyment of our product. We hope you have many hours of entertainment with this action/fantasy game.

**WARNING: PLEASE READ THE ENCLOSED CONSUMER INFORMATION & PRECAUTIONS BOOKLET CAREFULLY BEFORE USING YOUR NINTENDO® HARDWARE SYSTEM OR GAME PAK.**



LICENSED BY  
**Nintendo**

NINTENDO, SUPER NINTENDO ENTERTAINMENT SYSTEM AND THE OFFICIAL SEALS ARE REGISTERED TRADEMARKS OF NINTENDO OF AMERICA INC. ©1991 NINTENDO OF AMERICA INC.

THIS OFFICIAL SEAL IS YOUR ASSURANCE THAT NINTENDO HAS APPROVED THE QUALITY OF THIS PRODUCT. ALWAYS LOOK FOR THIS SEAL WHEN BUYING GAMES AND ACCESSORIES TO ENSURE COMPLETE COMPATIBILITY WITH YOUR SUPER NINTENDO ENTERTAINMENT SYSTEM. ALL NINTENDO PRODUCTS ARE LICENSED BY SALE FOR USE ONLY WITH OTHER AUTHORIZED PRODUCTS BEARING THE OFFICIAL NINTENDO SEAL OF QUALITY.

**NATSUME**  
NATSUME INC.  
1243A Howard Avenue  
Burlingame, CA 94010

MADE IN JAPAN  
Pocky and Rocky is a trademark of Natsume Inc. Natsume is a registered trademark of Natsume Inc. © 1993 Natsume Inc.

## TABLE OF CONTENTS

Notes from NATSUME .....	2
Safety Precautions .....	4
Background .....	5
Game Controls .....	6-7
Movement .....	8
Methods of Attack .....	9-10
Difference In Play Between Pocky and Rocky .....	11
Special Items .....	12-13
Characters .....	14-15
Limited Warranty .....	16
Notes .....	17-18
Game Master Challenge .....	19



## SAFETY PRECAUTIONS

For greater enjoyment of the game, please take the time to read this manual. The following items are for the care of your game.

1. Avoid subjecting the Game Pak to extreme temperature changes and shocks.
2. Do not touch the terminal connectors. Keep them safe by storing the game in the protective storage case.
3. The use of solvents, thinners, alcohol benzene and other strong agents can damage the Game Pak.



## BACKGROUND

Some time ago, the Nopino goblins went on a rampage, however, Pocky had put an end to that, and they had been quiet since then.

One day, all of a sudden Rocky the Raccoon, a Nopino goblin came running to Pocky's shrine. He said "Something terrible has happened. My fellow Nopino goblins have lost their minds. When I woke up, they were very agitated. When I tried to calm them, they came after me."

"Why? I thought that they were cured."

"I don't know either. In any case, I can not handle this by myself. I need your help."

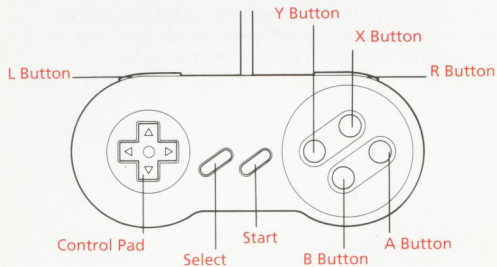
At that moment goblins appeared.

During the battle with the Nopino goblins, Pocky & Rocky find out that Nopino goblins were under the spell of another force. Who on earth has cast the spell and are controlling the Nopino goblins? And what for?



## GAME CONTROLS

- Control Pad**—Moves player in the direction you choose.
- A Button**—Throws the magic stick for Pocky and the magic leaves for Rocky.
- B Button**—Attack with the magic stick for Pocky, the magic tail for Rocky.
- X Button**—Slide.
- Y Button**—Consecutive throw of the magic cards and magic leaves.
- L and R Buttons**—Bomb.



\*Control Buttons may be changed in the options screen.

## GAME CONTROLS, cont.

- START**—Game Start, pause.
- SELECT**—Title screen. Moves cursor.
- \*Options**—You can preset the mode (normal, easy, hard), sound (stereo or mono) and the control button. You can also check out the music and the sound effects in the game. By using exit, you can go back to the title screen.



2nd Player can enter the game when it says "You can try too" on the screen.

## MOVEMENT

1. **Walk**—Player can move in 8 directions. Pocky and Rocky move at different speeds.

2. **Sliding**—Sliding can be used when running from enemies or escaping from traps. The speed and the distance of Pocky and Rocky's sliding are different. Sliding can also be used as a weapon when 2 players are playing simultaneously.

By sliding and hitting the other player, the other player will spin around all over the screen, defeating enemies on the way.



## METHODS OF ATTACK

### 1. **Magic Cards (Pocky)/Magic Leaves (Rocky)**

By picking up the same item during play, you can power up your magic cards. By getting hit, the power level of the magic cards will decrease.

#### **Wide shot—**

Pick up blue balls to power up magic card to have wide shot capabilities.



#### **Fire shot—**

Pick up red balls to power up magic cards to have fire shot capabilities.





## METHODS OF ATTACK, cont.

### 2. Magic Stick (Pocky)/ Magic Tail (Rocky)

Use it for offense and defense. If you hold down the button, you can create a spin attack.

If the player is Rocky, hold the button down and Rocky will turn into a stone statue, and become invincible.



### 3. Bomb

Damages surrounding enemies. You are given three bombs at the beginning in the Easy mode, one in the Normal mode and none in the Hard mode. You can collect more bombs during the course of the game.



## DIFFERENCE IN PLAY BETWEEN POCKY AND ROCKY

There are some differences between Pocky and Rocky's actions:

**Walking**—Pocky can walk a bit faster than Rocky.

**Sliding**—Pocky slides fast, but does not cover much distance. Rocky slides slower, but covers a longer distance.

**Bombs**—They are basically the same for both players, but Pocky's bombs can defeat big enemies, while Rocky's bombs can only defeat small enemies, but covers a wider range.



Pocky's Multidirectional Bomb attack



Rocky: Same as Pocky, but his whole attack will cover the whole screen and will have less power than Pocky's

**Spin Attack**—Pocky can do a spin attack by holding the B button. This provides defense against any type of weapon. Rocky, on the other hand, will become an invincible stone statue for about 5 seconds.



## SPECIAL ITEMS

Items are either held by enemies or are in baskets around the game.

**Blue ball**—Gives you wide shot capabilities



**Red ball**—Gives you fire shot capabilities



If you take a ball other than the one you have, you will return to the first power level.

**Magic Shield Item**



## SPECIAL ITEMS, CONT.

**Mad dog**—  
Player can ride on the Mad dog. He jumps around for a while and defeats enemies. Player can not use cards or stick while riding the Mad dog.



**Bomb Item**—  
Gives you one bomb.



**Life Recovery Items**—  
Magic snack—Restores full life.



**Magic Drink**—Restore partial life.



**Help man**—  
A help man is hiding somewhere in each stage. When he appears, he will drop some items for you to pick up. He has some very special items, such as a protection shield.



## CHARACTERS



Unby



Skelety



Snakey



Wing Obo



Mr. Obo



Kappa



Jack-O



## CHARACTERS, CONT.



Zombeez



Demon Head



Mad Lion



Pirate Pete



Joker



Ghost Knight



Bazooka Men





## LIMITED WARRANTY

### 90-Day Limited Warranty

**NATSUME INC.** warrants to the original consumer that this NATSUME Game Pak ("PAK") shall be free from defects in material and workmanship for a period of 90 days from date of purchase. If a defect covered by this warranty occurs during this 90-day warranty period, NATSUME will repair or replace the PAK, at its option, free of charge.

#### To receive this warranty service:

1. DO NOT return your defective Game Pak to the retailer.
2. Notify the NATSUME Consumer Service Department if the problem is requiring warranty service by calling: (415) 342-1712. Our Consumer Service Department is in operation from 9:00 A.M. to 5:00 P.M. Pacific Time, Monday through Friday.
3. If the service technician is unable to solve the problem by phone, he will provide you with a return Authorization number. Simply record this number on the outside packaging of your defective PAK, FREIGHT PREPAID AND INSURED FOR LOSS OR DAMAGE, together with your sales slip or similar proof-of-purchase within the 90-day warranty period to:

**NATSUME, INC.**  
Consumer Service Department  
1243A Howard Avenue  
Burlingame, CA 94010  
(415) 342-1712

This warranty shall not apply if the PAK has been damaged by negligence, accident, unreasonable use, modification, tampering, or by other causes unrelated to the defective materials or workmanship.

#### REPAIRS AFTER EXPIRATION OF WARRANTY:

If the PAK develops a problem after the 90-day warranty period, you may contact the NATSUME Consumer Service Department at the phone number noted previously. If the NATSUME service technician is unable to solve the problem by phone, he may provide you with a Return Authorization number. You may then record this number on the outside packaging of the defective PAK and return the defective PAK, FREIGHT PREPAID AND INSURED FOR LOSS OR DAMAGE, to NATSUME, enclosing a check or money order for \$20.00 payable to NATSUME, Inc. NATSUME will at its option, subject to the conditions above, repair the Pak or replace it with a new or repaired PAK. If replacement PAKS are not available, the defective PAK will be returned and the \$20.00 payment refunded.

#### WARRANTY LIMITATIONS:

ANY APPLICABLE IMPLIED WARRANTIES, INCLUDING WARRANTIES OF MERCHANTABILITY AND FITNESS FOR A PARTICULAR PURPOSE, ARE HEREBY LIMITED TO NINETY DAYS FROM THE DATE OF PURCHASE AND ARE SUBJECT TO THE CONDITIONS SET FORTH HEREIN. IN NO EVENT SHALL NATSUME BE LIABLE FOR CONSEQUENTIAL OR INCIDENTAL DAMAGES RESULTING FROM THE BREACH OF ANY EXPRESS OR IMPLIED WARRANTIES. The provisions of this warranty are valid in the United States only. Some states do not allow limitations on how long an implied warranty lasts or exclusions of consequential incidental damages, so the above limitations and exclusions may not apply to you. This warranty gives you specific legal rights, and you may have other rights which vary from state to state.



## GAME MASTER CHALLENGE

Defeat this game, and take a picture of the ending screen with your face in it (For SNES and NES games). Send the picture to Natsume and you will be designated a Natsume Game Master, and you will be awarded the following Prizes:

1. Game Master Sweatshirt.  
Not available in stores. Please specify size.



2. Game Master Certificate.  
Suitable for Framing.



3. Game Masters names will appear in the Natsume Newsletter.

The following are games which qualify for the game master challenge:



# MANUAL DE INSTRUCCIONES EN ESPAÑOL

# Rocky & Rocky™

## APUNTES DE NATSUME

Gracias por haber comprado Pocky y Rocky para el Super Nintendo Entertainment System (Systema de Entretenimiento de Nintendo). Estamos orgullosos y encantados de que Ud. escogió nuestro juego para aumentar su biblioteca de juegos tipo video. Favor de leereste manual para asegurar que goze completamente de nuestro producto. Esperamos que Ud. se entretenga durante muchas horas con este juego de acción/fantasia.

**ADVERTENCIA: FAVOR DE LEER CUIDADOSAMENTE  
EL FOLLETO DE INFORMACION AL CONSUMIDOR  
Y PRECAUCIONES ANTES DE USAR SU NINTENDO  
HARDWARE SYSTEM O GAME PAK.**



## INDICE DE MATERIAS

Apuntes de Natsume.....	18
Precauciones de Seguridad.....	20
Antecedentes.....	21
Controls de Mano.....	22-23
Movimiento.....	24
Métodos de Ataque.....	25-26
Diferencias de como juegan Rocky y Pocky.....	27
Objetos especiales.....	28-29
Personajes.....	30-31
Garantía Limitada.....	32
Apuntes.....	33-34
Game Master Challenge (Reto para ser Maestro del Juego).....	35



## PRECAUCIONES DE SEGURIDAD

Para disfrutar más del juego favor de tomar su tiempo y leer este manual. La siguiente información es para el mantenimiento de su juego.

1. Evite sujetar el Game Pak a cambios extremos de temperatura y a descargas.
2. No toque los conectores de la terminal eléctrica. Guardelos en la caja protectora para mantenerlos seguros.
3. El uso de solventes, disolventes, benceno de alcohol y otros agentes químicos puede dañar al Game Pak.

## ANTECEDENTES

Hace tiempo, los "goblins" (duendes) de Nopino se alborotaron, sin embargo, Pocky los había controlado, y desde entonces se habían calmado.

Un día, de repente Rocky the Raccoon (Rocky el Mapache), un duende de Nopino vino corriendo al santuario de Pocky. Dijo él, "Ha ocurrido algo horrible. Mis prójimos los duendes se han vuelto locos. Cuando me desperté, estaban muy agitados. Cuando intenté de calmarlos, me atacaron."

"¿Por qué?" "Pensé que estaban curados."

"Yo no sé tampoco. De todos modos, no puedo resolver esto solo. Necesito su ayuda."

En ese momento llegaron los duendes.

Durante la batalla con los duendes de Nopino, Pocky y Rocky llegan a saber que los duendes de Nopino estaban hechizados por otra fuerza. ¿Quiénes los han hechizados y están controlando a los duendes de Nopino? ¿Y para qué?

## CONTROLS DE MANO

**Control Pad** (Aparato de Control de Mano)- Mueve el personaje hacia la dirección que Ud. escoga.

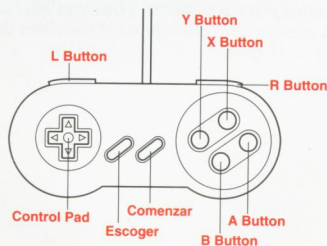
**A Button** (Botón A)- Avienta el palo mágico para Pocky y las hojas mágicas para Rocky.

**B Button** (Botón B)- Ataca con el palo mágico para Pocky, con el rabo mágico para Rocky.

**X Button** (Botón X)- Para Deslizarse

**Y Button** (Botón Y)- Avienta sucesivamente las cartas mágicas y las hojas mágicas.

**L and R Buttons** (Botones L y R)- Para Bombardear



\* Se puede cambiar la configuración de las teclas del control de mano en la pantalla de opciones.

## CONTROLS DE MANO, CONTINUADO

**START (COMENZAR)**-Da comienzo al juego, pausa

**SELECT (SELECCIONAR)**- Pantalla del título, mueve el cursor.

\* Opciones- Se puede programar el modo (normal, fácil, difícil), sonido (estéreo o mono) y la configuración de teclas. También se puede escuchar la música y los efectos sonoros del juego. Usando "exit" (salir) se puede regresar a la pantalla del título.



Un segundo jugador puede entrar al juego cuando la pantalla diga, "You can try too." ("Ud. también puede intentar.")

## MOVIMIENTO

1. **Walk (Caminar)**- El jugador puede moverse en 8 direcciones. Pocky y Rocky mueven a velocidades distintas.

2. **Sliding (Deslizarse)**- Puede deslizarse cuando está huyendo de enemigos o escapando de trampas. La velocidad y distancia de como se deslizan Pocky y Rocky son diferentes. También se puede usar el deslizarse como arma cuando juegan dos jugadores simultáneamente.

Con deslizarse y pegar al otro jugador, el otro jugador girará por toda la pantalla, derrogando enemigos a la vez.



## MÉTODOS DEL ATAQUE

### 1. **Magic Cards-Cartas Mágicas (Pocky)/Magic Leaves-Hojas Mágicas (Rocky)**

Al recoger el mismo objeto durante el juego, después se puede utilizar sus cartas mágicas. Al recibir un golpe, el nivel de fuerza de las cartas mágicas se bajará.

#### **Wide shot (Tiro de Alcance Amplio)**

Recoga pelotas azules para poder utilizar una carta mágica y alcanzar tener capacidades de tiro de alcance amplio.



#### **Fire shot (update)**

Recoga pelotas rojas para poder utilizar las cartas mágicas y alcanzar tener capacidades de update.





## MÉTODOS DE ATAQUE, CONTINUADO

### 2. Magic Stick-Palo Mágico (Pocky)/Magic Tail-Rabo Mágico (Rocky)

Utilízenlos para la ofensa y defensa. Si sigue oprimiendo el botón, puede crear un ataque gigante.

Si el jugador es Rocky, oprima el botón y Rocky se convertirá en estatua de piedra, y llegará a ser invencible.



### 3. Bomb (Bomba)

Daña a enemigos cercanos. Se le otorgan 3 bombas al principio en el modo Fácil, 1 en el modo Normal, y ninguna en el modo Difícil. Se puede acumular más bombas durante el curso del juego.



## DIFERENCIAS EN COMO JUEGAN POCKY Y ROCKY

Hay algunas diferencias en las acciones de Pocky y Rocky:

**Walking (Caminando)**- Pocky puede caminar un poco más rápido que Rocky.

**Sliding (Deslizarse)**- Pocky se desliza rápido pero no cubre tanta distancia. Rocky se desliza más lento pero cubre más distancia.

**Bombs (Bombas)**- Básicamente son lo mismo para ambos jugadores, sin embargo las bombas de Pocky pueden derrogar a enemigos grandes, mientras las bombas de Rocky sólo pueden derrogar a enemigos pequeños, pero tienen más alcance.

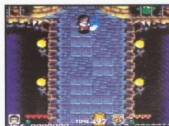


Ataque de bombas multidireccional de Pocky



Rocky: Lo mismo que Pocky, pero su ataque cubrirá toda la pantalla y tendrá menos potencia que el de Pocky

**Spin Attack (Ataque Gigante)**- Al oprimir el botón B Pocky puede hacer un ataque gigante. Esto provee defensa contra cualquier tipo de arma. Rocky, al contrario, se convertirá en estatua de piedra invencible por unos 5 segundos.



## OBJETOS ESPECIALES

Los objetos están retenidos por los enemigos o están en canastas por todo el juego.

**Pelota Azul**- Le da capacidades de WIDE SHOT (Tiro de alcance amplio)



**Pelota Roja**- Le da capacidades de FIRE SHOT (update)



Si Ud. recoge una pelota diferente de la que Ud. tiene, regresará al primer nivel de fuerza.

**Magic Shield Item (Objeto el Escudo Mágico)**



## OBJETOS ESPECIALES, CONTINUADO

**Mad dog (Perro Loco)**

El jugador puede montarse al Perro Loco. Brinca durante un rato y derroga a enemigos. El jugador no puede usar ni cartas ni el palo mientras montado al Perro Loco.



**Bomb item (Objeto bomba)**

Le da una bomba.



**Life Recovery Items (Objetos de recuperación de la vida)**

Magic Snack (bocadillos mágicos)- restauran por completo la vida.



Magic Drink (Bebida mágica)- restaura la vida parcialmente.



**Help man (Hombre de apoyo)**

Un hombre de apoyo está escondiéndose en cada etapa. Cuando aparezca, dejará algunos objetos para que Ud. los recoga. Tiene algunos objetos muy especiales, por ejemplo un escudo protectoro.



## PERSONAJES



Unby



Skelety



Snakey



Wing Obo



Mr. Obo



Kappa



Jack-O

## PERSONAJES, CONTINUADO



Zombeez



Demon Head



Mad Lion



Pirate Pete



Joker



Ghost Knight



Bazooka Men



