

SNS-6C-USA

# CLIFFHANGER™



INSTRUCTION BOOKLET

SONY



IMAGESOFT

**SUPER NINTENDO**  
ENTERTAINMENT SYSTEM

**WARNING: PLEASE READ THE ENCLOSED CONSUMER INFORMATION AND PRECAUTIONS BOOKLET CAREFULLY BEFORE USING YOUR NINTENDO® HARDWARE SYSTEM OR GAME PAK.**



Sony Imagesoft  
2100 Colorado Avenue  
Santa Monica, CA 90404

For questions or comments about this or other Sony Imagesoft products call (310) 449-2393.



LICENSED BY



NINTENDO, SUPER NINTENDO ENTERTAINMENT SYSTEM AND THE OFFICIAL SEALS ARE REGISTERED TRADEMARKS OF NINTENDO OF AMERICA INC.  
© 1991 NINTENDO OF AMERICA INC.

THIS OFFICIAL SEAL IS YOUR ASSURANCE THAT NINTENDO HAS APPROVED THE QUALITY OF THIS PRODUCT. ALWAYS LOOK FOR THIS SEAL WHEN BUYING GAMES AND ACCESSORIES TO ENSURE COMPLETE COMPATIBILITY WITH YOUR SUPER NINTENDO ENTERTAINMENT SYSTEM. ALL NINTENDO PRODUCTS ARE LICENSED BY SALE FOR USE ONLY WITH OTHER AUTHORIZED PRODUCTS BEARING THE OFFICIAL NINTENDO SEAL OF QUALITY.

# CONTENTS



THE WORD FOR ADVENTURE - - - - -	2
STARTING THE GAME - - - - -	3
NAMES OF CONTROLLER PARTS - - - - -	4
GAME CONTROL SUMMARY - - - - -	5
MAIN GAME SCREEN - - - - -	8
SCORING - - - - -	10
LEVELS - - - - -	11



# THE WORD FOR ADVENTURE

It's what we say when we're talking about a close call . . . the definition of suspense . . . the word for adventure. . . .

## IT'S CLIFFHANGER

Based on the bare-knuckle, big-action blockbuster adventure hit starring Sylvester Stallone, *CLIFFHANGER* brings to your Super Nintendo Entertainment System the treacherous cliffs and icy rock faces . . . the dizzying heights and deadly avalanches. . . the crazed villains and nonstop combat action of the film. *You* are Gabe Walker, Rocky Mountain rescue ace, now facing the most grueling operation of your life: saving your friends and defeating the megalomaniac Qualen and his gang of high-altitude bad guys.

# STARTING THE GAME



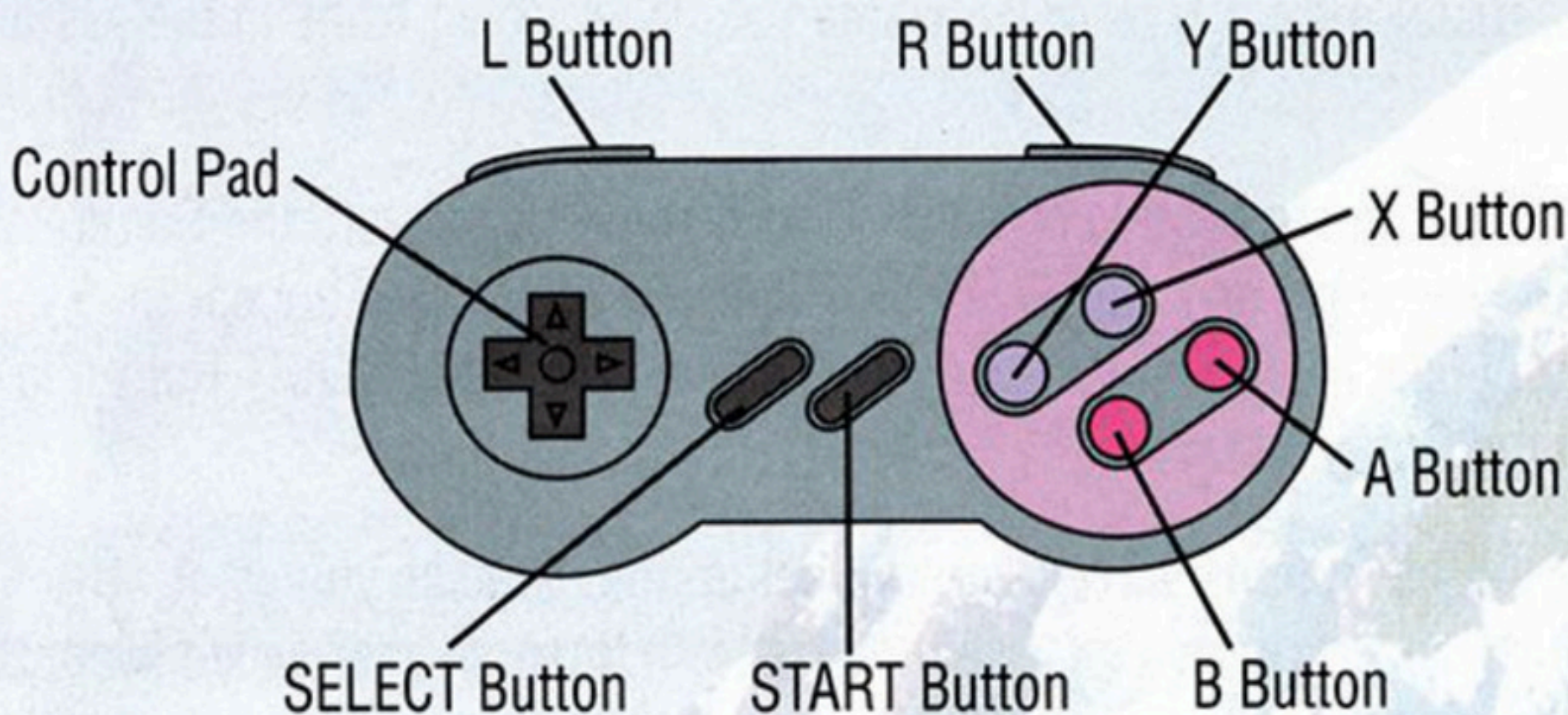
1. Turn off your Super Nintendo Entertainment System by sliding the POWER bar away from the Game Pak slot. Plug a game controller into your system.
2. Insert the *CLIFFHANGER* Game Pak, label facing front, in the system slot.
3. Turn on the system by sliding the POWER bar toward the Game Pak slot. The Sony and *CLIFFHANGER* logo and title screen appear in sequence. After about 5 seconds, you may press the START Button to go to the Options screen.
4. At the Options screen you can set up the game as you want, with either stereo or monaural sound, and with three, five, or seven lives. Use the Control Pad UP and DOWN arrows to highlight each option, then use the LEFT and RIGHT arrows to set up the option as you wish.

(If the Options screen is left idle for 30 seconds, a demo of gameplay will begin automatically. Press the START Button to return to the Options screen.)

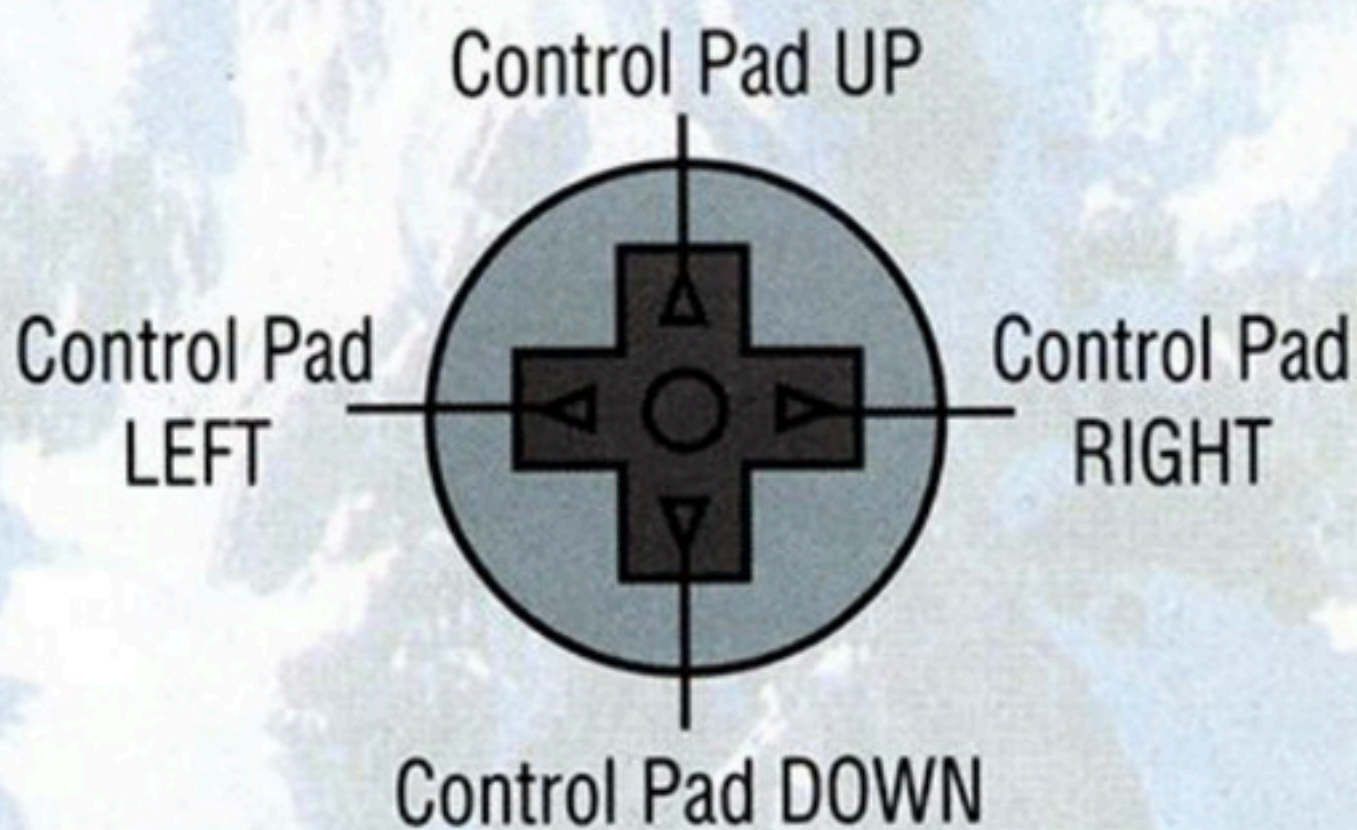
5. When ready, highlight the start game option and press the START Button to begin play.

Game credits will roll on the screen at the end of every game that ends before you have completed all seven levels. To go to the options screen and begin a new game, press the START Button. When you successfully complete all seven levels of *CLIFFHANGER*, you will not be able to exit the credits to the Options screen. Restart your Super Nintendo Entertainment System to start a new game.

# NAMES OF CONTROLLER PARTS



**This manual refers to the following directions:**



# GAME CONTROL SUMMARY



**TO WALK:** Use the Control Pad to walk in any direction—up, down, left, right, and diagonally.

**TO RUN:** Press LEFT, RIGHT, or any diagonal direction on the Control Pad twice in quick succession to run in that direction.

**TO CLIMB OR DESCEND:** Look for surfaces with little footholds. To start climbing such a surface, approach the wall and press UP. To start descending, walk to the edge and press DOWN. Then, whether you're climbing or descending, use the arrow buttons on the Control Pad to move in the direction you want. If you're shot while climbing or descending, you'll have a brief moment to recover—press UP while hanging. Press and hold the Y Button to climb or descend more rapidly. But beware—when you're moving fast on a wall, you won't have a chance to recover if you're hit, and you'll fall to your doom.

**TO ROPE-CLIMB OVER CHASMS:** Walk up to the rope and press the A Button. While grasping the rope, press LEFT or RIGHT to climb hand over hand in that direction. You cannot recover from a hit you take while rope-climbing.

**COMBAT MOVES:** Use the Controller buttons as follows to fight:

**Y BUTTON:** Quick press: jab.

In rapid succession: a combination of four punches—jab, left hook, right hook, uppercut. Press the RIGHT or LEFT arrow (whichever is *opposite* to the way you're facing at the moment) during the four-punch move to backhand enemies attacking from behind.

While running: bulldozer move.

When near an object: pick up the object.



**A:** Jump. Press A while running to execute a flying leap.

**B BUTTON:** Low kick.

In rapid succession: alternating high and low kicks.  
Press and hold: spinning back kick.

**A BUTTON, then B BUTTON:** Flying kick. You must press B at the *top* of your jump. Press A, then B while running to execute a running flying kick.

**X BUTTON:** Block or duck. Press X and any Control Pad direction except down to block blows to your head. Press X and DOWN to duck.  
Beware: some enemy moves, such as the low kick, can only be partially blocked; others, like the knife swipe, can't be blocked at all.

**L BUTTON or R BUTTON:** Super kick. This move clears out your enemies very effectively, but it takes extra energy from your power bar, so it's for desperate situations only.

**TO PAUSE GAME:** Press the START Button. Press it again to resume play.

**TO CONTINUE AFTER LOSING ALL YOUR LIVES:** Press the START Button to resume play when you're at the Continue screen.



**WEAPONS:** You're a pretty rugged guy, but you're still going to need some weapons to survive. So be sure to take advantage of what comes your way, including knives and guns.



Of course, to use a weapon, you first have to take it away from a bad guy who wants to use it on *you*. By attacking, you should be able to get him to drop his weapon. Then you can pick it up (by pressing the Y Button).

Weapons are used as follows:

**Knife:** To jab with the knife, press Y. To throw it, press X. Once you throw a knife, it's gone.

**Gun:** Press Y to fire. A gun has 12 rounds of ammo; after you fire 12 times, you lose the gun.

You can have only one weapon at a time. If you have one weapon and want to pick up another, you must lose the one you are carrying: either throw the knife or use up the bullets.

# MAIN GAME SCREEN



## 1: LIVES

This shows how many lives you currently have. Depending on how you set up the game at the Options screen, you start each game with one of the following:

- 3 lives, 5 continues
- 5 lives, 3 continues
- 7 lives, 1 continue

You also earn extra lives when you reach certain point totals; see "SCORING," on page 10.

## 2: SCORE

This records your point total tallied during each game. The more enemies you destroy, the more points you get. But if you lose all your lives, you also lose all the points you've accumulated. See "SCORING," on page 10, for details on earning points.



### 3: YOUR POWER BAR

This shows how much energy you have left in your current life.

### 4: ENEMY POWER BARS

This shows how much energy your current enemy has left. When you're facing the boss of any level, the boss's name and picture appear along with his power bar.

### CAMPFIRES



Look for campfires like this one along the way—you need to warm yourself by the fire to replenish your energy.

# SCORING



Each enemy you destroy is worth a certain amount of points, which goes up as you progress through the levels. On level 1, enemies are worth the following:

Knife thrower	1500
Platform sniper	1500
Dynamite thrower	2500
Boulder thrower	2500
Army fighter	2500
Knifeman	3500
Judoman	4500
Strongman	5500
Kung fu expert	6500

On subsequent levels, the enemies' values are as follows:

Level 2	Level 1 score + 1000
Level 3	Level 1 score + 2000
Level 4	Level 1 score + 3000
Level 5	Level 1 score + 4000
Level 6	Level 1 score + 5000

Bosses are worth 10,000 points times the level you're on.

You earn an extra life by reaching each of the following point totals:

100,000  
300,000  
700,000

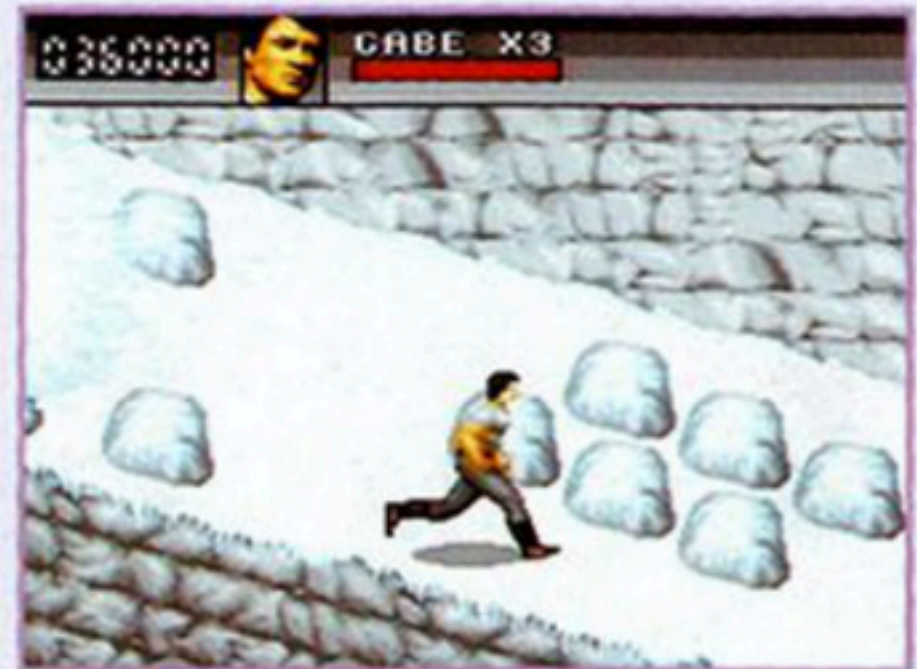
# LEVELS



Here's the basics of what you'll find—and who and what you'll face—in each level of *CLIFFHANGER*.

## THE ESCAPE FROM QUALEN

You and your friend Hal fall into the clutches of Qualen, the psycho leader of a band of crazed fugitives. They're looking for three metal cases that were lost in a plane wreck—together, the cases hold \$100 million in cold cash—and Qualen positively *insists* that you help in the search. Luckily, you manage to escape, and you set out in search of the money in an effort to ransom Hal and save his life.



You must cross a forbidding mountain landscape and fight off a variety of enemies. Finally, you'll have to outrun a huge avalanche at break-neck speed to survive this level and go on.

## IN SEARCH OF THE SECOND CASE

Having recovered the first of the three money cases, you go in search of the second one. In this level, you must find your way through treacherous forested terrain, while fighting ever-more-threatening enemies. And at the end: Heldon, one big, tough, body-slammng wrestler who doesn't make friends very easily.





## ON TO DOUGLAS CABIN—AND JESSIE



Now, almost freezing to death, you seek the shelter of Douglas Cabin, the mountain hideaway where your friend Jessie anxiously awaits your arrival. All you have to do is *find* the cabin—and pull off some tricky climbing maneuvers *while* fighting off enemies along the way. Not to mention Delmar and

Kynette, the kung-fu kings who stand between you and that high-altitude hearthfire.

## QUALEN COPS A CHOPPER—AND GRABS JESSIE!



Just when you thought you'd get a breather, you find you're on thin ice as you have to cross a patchwork of shifting icebergs while fighting off kung-fu masters and crazed musclemen. Then it's up a series of craggy cliffs, dodging deadly rock slides. At the summit, you have to make it through a cave infested

with rabid bats and razor-sharp stalactites. Finally, you must get to the third case of money before a big, nasty swarm of bats overtakes you. Along the way, make sure you don't fall to your death while hurling yourself across wide chasms and deadly crevices.

## THE CLIMB TO THE TOP OF THE BITKER LADDER

You've found all the money now, but it's a long way to the top of the Bitker Ladder—and your rendezvous with Qualen, where you'll exchange the money for your hostage pals. On the way, you must ascend difficult slopes and avoid the gunfire of Qualen's henchmen. At the top, watch out for Ryan, who'll knock you out with his precision blows.



## ALL THAT MONEY, LOST!

Your friends are safe, but you've destroyed the loot and Qualen is out-of-his-mind-mad about it! For you, it's back down the mountain in a *big* hurry, with Qualen in hot pursuit at the controls of the hijacked rescue chopper. Look out for Qualen's minions as they come at you with a vengeance!



## FACE TO FACE WITH QUALEN

That's right—it's just him and you. Just him *or* you, too, as you fight Qualen to the death while balancing precariously on the chopper, which is itself barely stuck to the face of a cliff.



# SONY IMAGESOFT WARRANTY

Sony Imagesoft warrants to the original purchaser of this Sony Imagesoft product that this Game Pak is free from defects in material and workmanship for a period of ninety (90) days from the date of purchase. This Sony Imagesoft product is sold "as is," without expressed or implied warranty of any kind, and Sony Imagesoft is not liable for any losses or damages of any kind resulting from the use of this product. Sony Imagesoft agrees for a period of ninety (90) days to either repair or replace, at its option, free of charge, the Sony Imagesoft product. Send product postage paid, along with dated proof of purchase, to the address shown below.

This warranty shall not be applicable and shall be void if the defect in the Sony Imagesoft product has arisen through abuse, unreasonable use, mistreatment or neglect. THIS WARRANTY IS IN LIEU OF ALL OTHER WARRANTIES AND NO OTHER REPRESENTATIONS OR CLAIMS OF ANY NATURE SHALL BE BINDING ON OR OBLIGATE SONY IMAGESOFT. ANY IMPLIED WARRANTIES APPLICABLE TO THIS SOFTWARE PRODUCT, INCLUDING WARRANTIES OF MERCHANTABILITY AND FITNESS FOR A PARTICULAR PURPOSE, ARE LIMITED TO THE NINETY (90) DAY PERIOD DESCRIBED ABOVE. IN NO EVENT WILL SONY IMAGESOFT BE LIABLE FOR INCIDENTAL OR CONSEQUENTIAL DAMAGES RESULTING FROM POSSESSION, USE OR MALFUNCTION OF THE SONY IMAGESOFT SOFTWARE PRODUCT.

Some states do not allow limitations as to how long an implied warranty lasts and/or exclusions or limitations of consequential damages, so the above limitations and/or exclusions of liability may not apply to you. This warranty gives you specific legal rights, and you may also have other rights which vary from state to state.



SONY IMAGESOFT  
2100 Colorado Avenue, Third Floor, Santa Monica, CA 90404  
For questions or comments about this or other Sony products  
call (310) 449-2393.



Sony Imagesoft  
2100 Colorado Avenue  
Santa Monica, CA 90404  
For questions or comments about this or  
other Sony Imagesoft products  
call (310) 449-2393.







Sony Imagesoft, 2100 Colorado Avenue, Third Floor, Santa Monica, CA 90404

Printed in Japan