



BOMBERMAN ONLINE™

Dreamcast™



Online Play
Requires a
SegaNet
Account
IMPORTANT DETAILS
ON BACK OF
PACKAGE



SEGA®

51065

WARNINGS Read Before Using Your Sega Dreamcast Video Game System

CAUTION

Anyone who uses the Dreamcast should read the operating manual for the software and console before operating them. A responsible adult should read these manuals together with any minors who will use the Dreamcast before the minor uses it.

HEALTH AND EPILEPSY WARNING

Some small number of people are susceptible to epileptic seizures or loss of consciousness when exposed to certain flashing lights or light patterns that they encounter in everyday life, such as those in certain television images or video games. These seizures or loss of consciousness may occur even if the person has never had an epileptic seizure.

If you or anyone in your family has ever had symptoms related to epilepsy when exposed to flashing lights, consult your doctor prior to using Sega Dreamcast.

In all cases, parents should monitor the use of video games by their children. If any player experiences dizziness, blurred vision, eye or muscle twitches, loss of consciousness, disorientation, any involuntary movement or convulsion, **IMMEDIATELY DISCONTINUE USE AND CONSULT YOUR DOCTOR BEFORE RESUMING PLAY.**

To reduce the possibility of such symptoms, the operator must follow these safety precautions at all times when using Dreamcast:

- Sit a minimum of 6.5 feet away from the television screen. This should be as far as the length of the controller cable.
- Do not play if you are tired or have not had much sleep.
- Make sure that the room in which you are playing has all the lights on and is well lit.
- Stop playing video games for at least ten to twenty minutes per hour. This will rest your eyes, neck, arms and fingers so that you can continue comfortably playing the game in the future.

OPERATING PRECAUTIONS

To prevent personal injury, property damage or malfunction:

- Before removing disc, be sure it has stopped spinning.
- The Sega Dreamcast GD-ROM disc is intended for use exclusively on the Sega Dreamcast video game system. Do not use this disc in any thing other than a Dreamcast console, especially not in a CD player.
- Do not allow fingerprints or dirt on either side of the disc.
- Avoid bending the disc. Do not touch, smudge or scratch its surface.
- Do not modify or enlarge the center hole of the disc or use a disc that is cracked, modified or repaired with adhesive tape.
- Do not write on or apply anything to either side of the disc.
- Store the disc in its original case and do not expose it to high temperature and humidity.
- Do not leave the disc in direct sunlight or near a radiator or other source of heat.
- Use lens cleaner and a soft dry cloth to clean disc, wiping gently from the center to the edge. Never use chemicals such as benzene and paint thinner to clean disc.

PROJECTION TELEVISION WARNING

Still pictures or images may cause permanent picture tube damage or mark the phosphor of the CRT. Avoid repeated or extended use of video games on large-screen projection televisions.

SEGA DREAMCAST VIDEO GAME USE

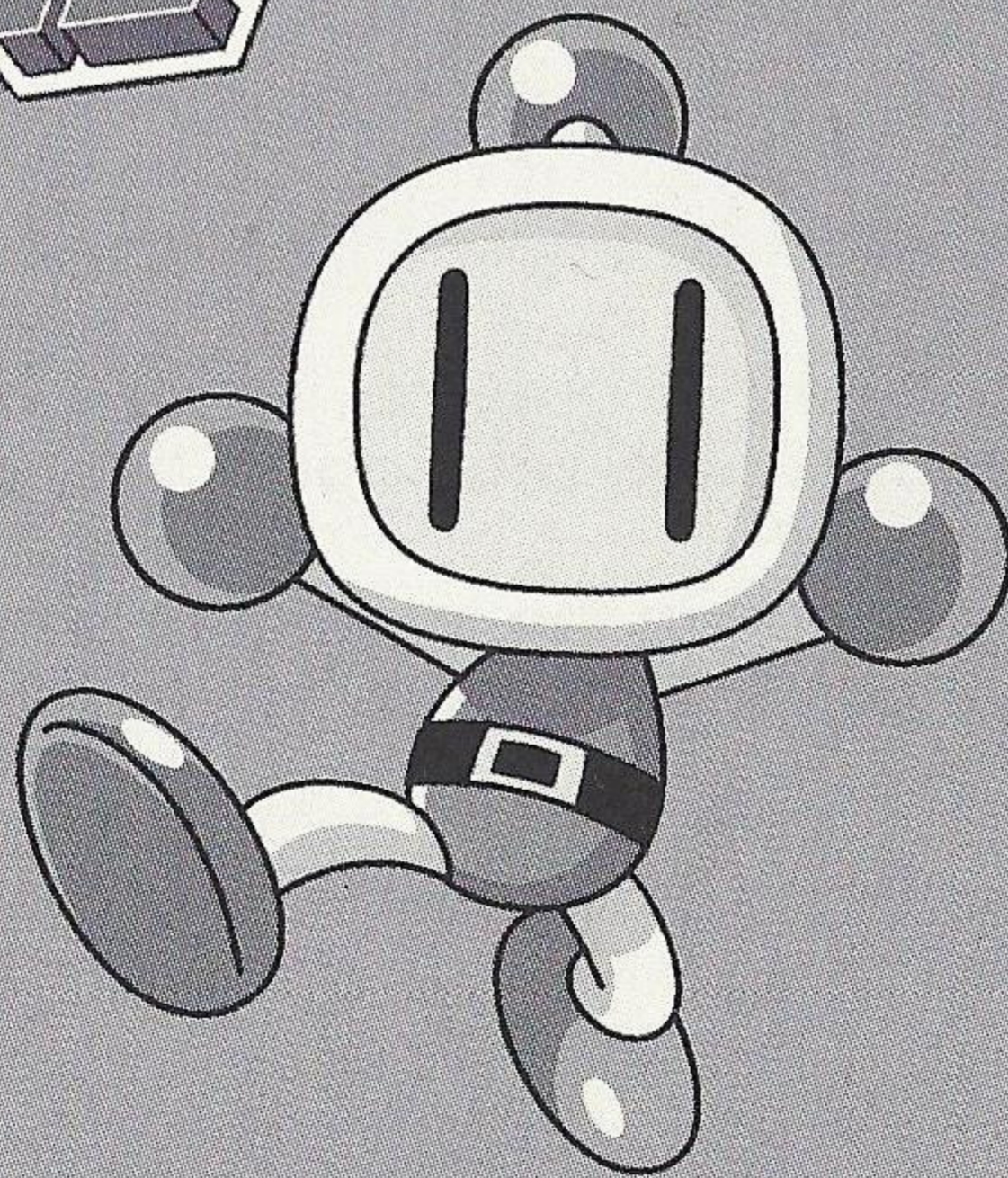
This GD-ROM can only be used with the Sega Dreamcast video game system. Do not attempt to play this GD-ROM on any other CD player; doing so may damage the headphones and/or speakers. This game is licensed for home play on the Sega Dreamcast video game system only. Unauthorized copying, reproduction, rental, public performance of this game is a violation of applicable laws. The characters and events portrayed in this game are purely fictional. Any similarity to other persons, living or dead, is purely coincidental.

Thank you for purchasing Bomberman Online. Please note that this software is designed only for use with the Dreamcast console. Be sure to read this instruction manual thoroughly before you start playing Bomberman Online.

BOMBERMAN ONLINE

CONTENTS

STORY	2
STARTING THE GAME	3
CONTROLS	4
ITEMS	6
RULES OF THE GAME	8
GAME MODES	13
NORMAL GAME	14
BATTLE GAME	15
NETWORK	19
EXTRAS BOX	24
OPTIONS	26



Bomberman Online is a memory card (sold separately) compatible game. With this game, at least 6 blocks of free memory spaces are required to save game file. While saving or loading, never turn the Dreamcast power OFF, attempt to remove the memory card or disconnect the controller containing the memory card.

STORY

There is a small island on the southern sea of the planet Bomber, called "Quintet Island." Once every four years, a large-scaled Bomber Battle Festival is held on this island.

They call it the "BOMB-A-LYMPICS."

The Champion of the planet is decided for each of five Bomber Events, and the winner is given a Sacred Gold Medal.

...Deep inside the forest of this island, you see a sight of Bomberman training hard under the waterfall.

To prepare himself for the new battle...

"When one gains all Sacred Gold Medals, a way to Master Bomberman shall open."

Believing in the ancient legend of the island, Bomberman challenges 5 Champion Teams all by himself...

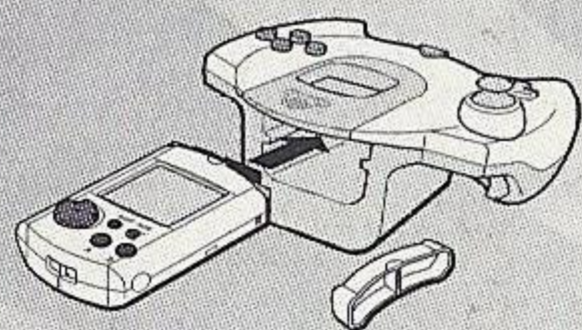
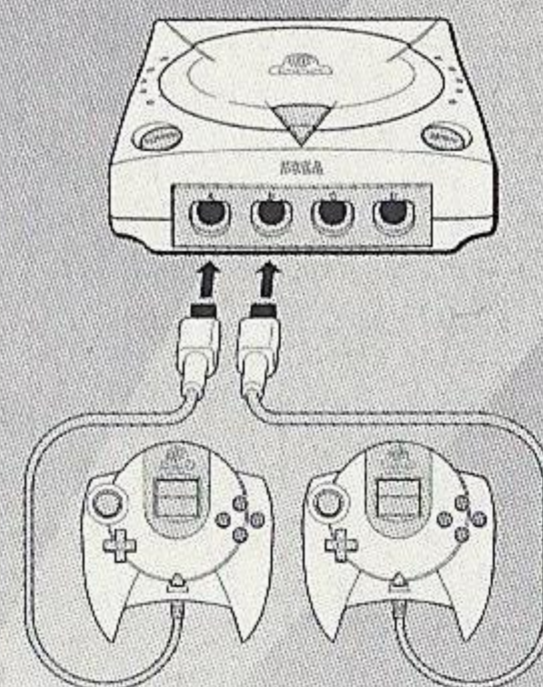
STARTING THE GAME

SETTING UP

Bomberman Online is a one to four player game. For 1P play (Normal Game) and menu control, connect the Dreamcast Controller to the control port A. With Battle Game (p.15) you may connect the controllers for other players in any vacant ports, but with online play you must connect them in order.

CAUTION

Never touch the Analog Thumb Pad or the Triggers **L/R** while turning the Dreamcast power ON. Doing so may disrupt the controller initialization procedure and result in malfunction.

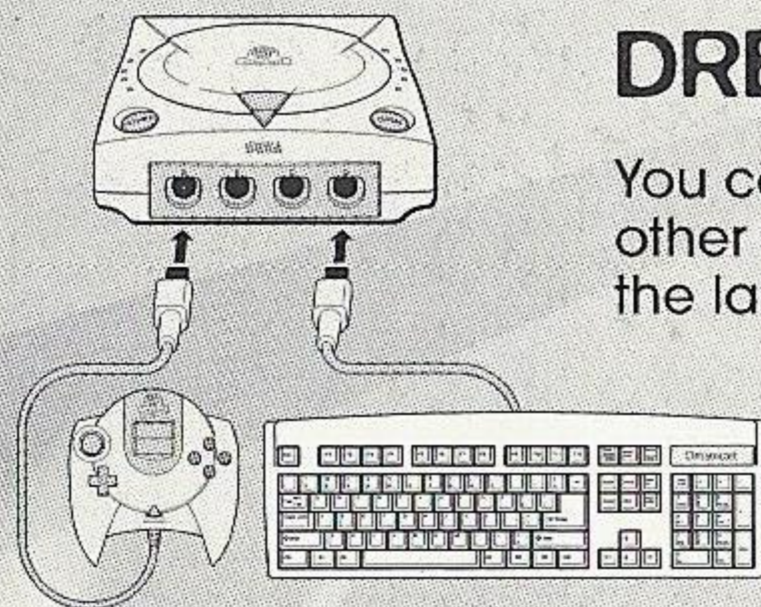
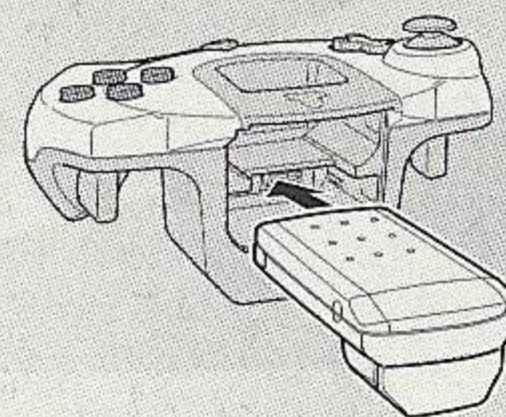


MEMORY CARD

The game data is saved to and loaded from the memory card inserted to the Expansion Socket 1 of the Dreamcast Controller, connected to the Control Port A. The save file will not be created if the memory card is not connected there.

JUMP PACK™

To use the Jump Pack (sold separately) when playing, please make sure to insert it into Expansion Socket 2 of the Dreamcast Controller.



DREAMCAST KEYBOARD

You can use the Dreamcast Keyboard (sold separately) to chat with other participants online. To use the Dreamcast Keyboard, connect it as the last peripheral of the order.



CONTROLS

DREAMCAST CONTROLLER

X BUTTON
Punch/Line Bomb

A BUTTON
Set a bomb
Power Glove
Enter Selection

B BUTTON
Cancel selection
Kick stop

Y BUTTON
Not Used

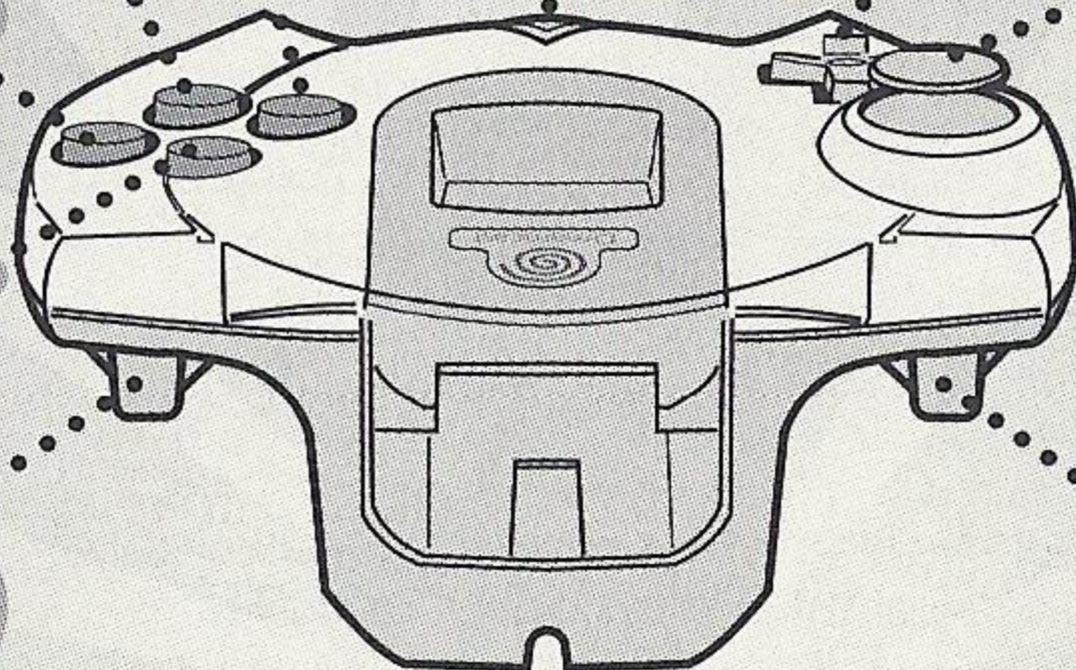
TRIGGER R
Adjust power for Bomber
Karate Mini Game
Display names during
Online Play

START BUTTON
Pause the game

D-PAD
Control your character
Select menu/stage

ANALOG THUMB PAD
Control your character

TRIGGER L
Not Used



The button assignments shown above are default setting. You can reconfigure button assignments in the Options setting. To soft-reset the Dreamcast and return to the title screen during gameplay, simultaneously press and hold the **A**, **B**, **X**, **Y** and **START** buttons.

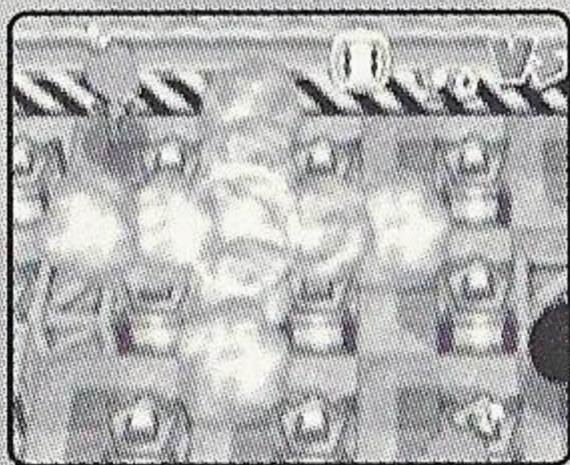
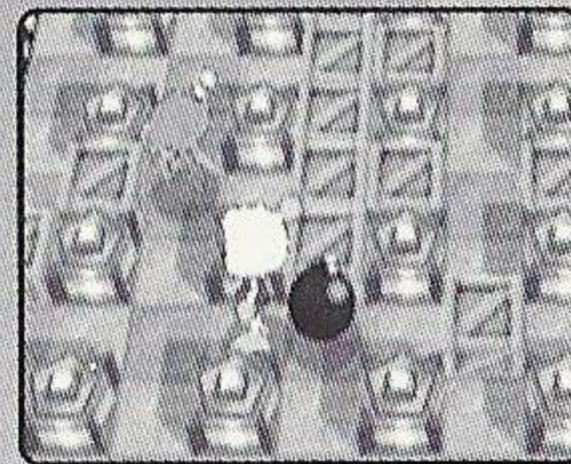
PAUSE MENU

During the game, press the Start Button to pause the game and display a Pause Menu. Either select **Return** or press the Start Button again to resume the game. Select **Exit Game** to quit the game.



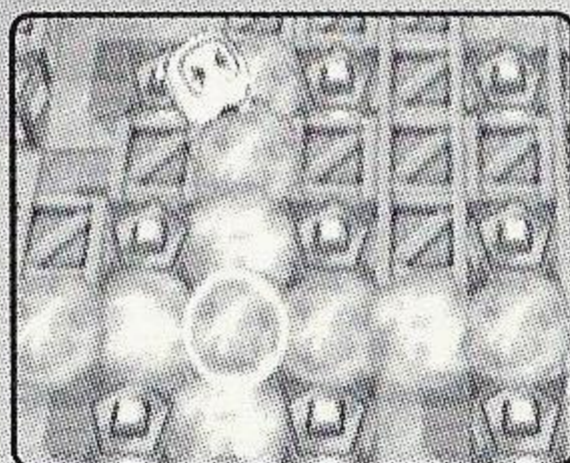
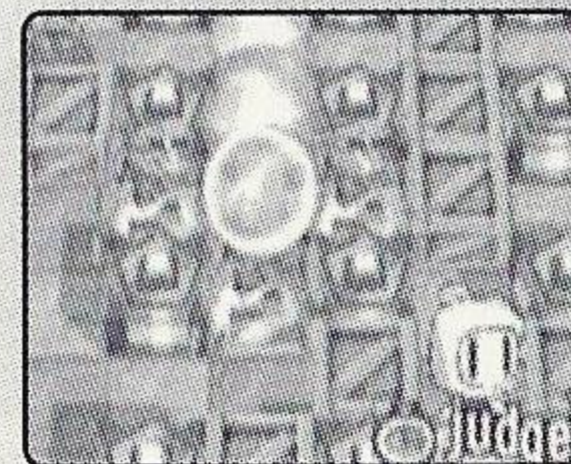
CONTROLLING BOMBERMAN

Use the Analog Thumb Pad/D-Pad to move your character on the field. The basic object of the game is to place the bomb on the field and blast your opponents.



Anywhere on the field, press **A** to place a bomb. The bomb will explode after a given period of time, horizontally and vertically in a given length.

If there is a soft block in the way of an explosion, it will be destroyed, making an open space for the player to move around. Some of the soft blocks may contain a power up item (p.6).



Don't place the bombs recklessly though. You may wind up blasting yourself.

ITEMS

The following power up (down) items may appear whenever you destroy a soft block.

FIRE

The area where your bomb explodes increases.

BOMB

The amount of bombs you can place increases by one.

SPEED

The speed of your character increases.

KICK

Run into the bomb to kick it. The bomb will slide until either it hits an obstacle (soft block, hard block, wall, bomb or other player) or when you press **B**.

POWER GLOVE

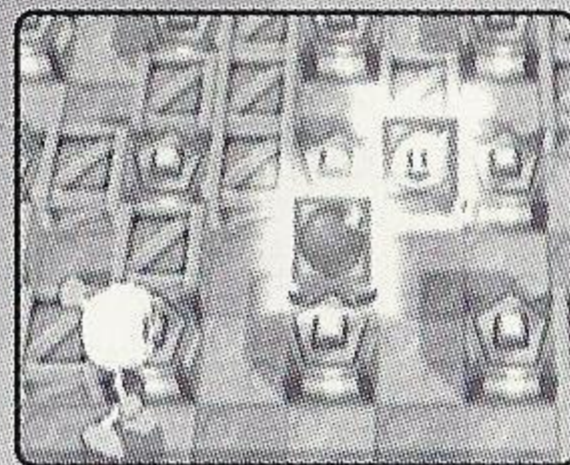
After you place a bomb (when you and the bomb are on the same space), press **A** to hold the bomb up, and release **A** to throw the bomb to the direction you are facing. While holding the bomb, you can also move around the field.

PUNCH

Stand next to the bomb, facing it, and press **X** to punch the bomb 3 spaces ahead.

LINE BOMB

After you place a bomb (when you and the bomb are on the same space), press **X** to place as many bombs you can place in the direction you are facing (up to the place where there is an obstacle such as soft block, hard block, wall, bomb or item).



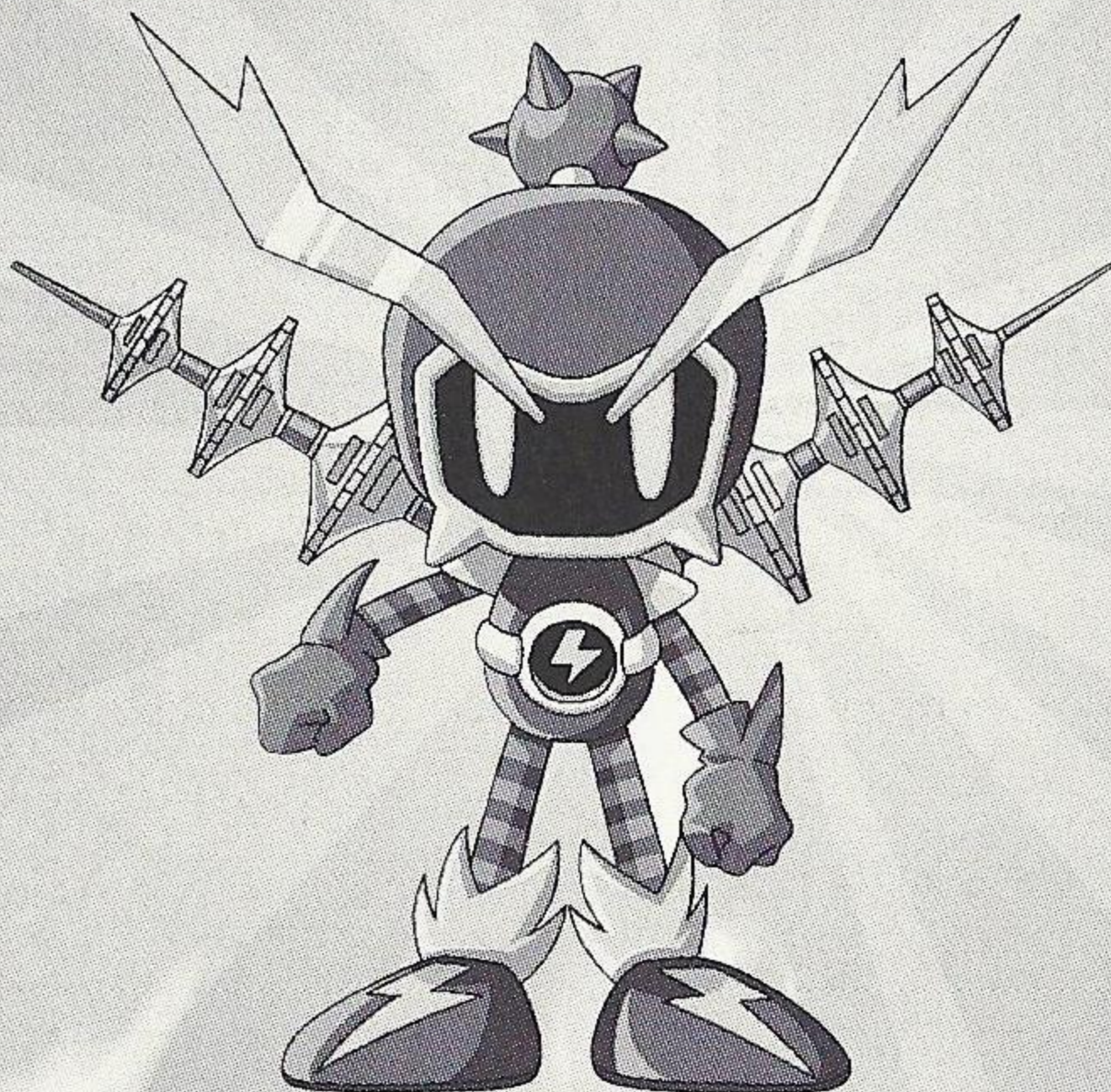
BOUNCING BOMB

When you either kick or throw this bomb, the bomb will bounce around randomly until it explodes.

SKULL

Your character becomes stricken with one of the following sicknesses for a given amount of time.

- SPRINT SICKNESS** Radically increases Bomberman's speed.
- SLUGGISH SICKNESS** Radically decreases Bomberman's speed.
- DIARRHEA** Sets bombs uncontrollably.
- PARALYSIS** Disallows the setting of bombs.
- MINIMAL SICKNESS** Decreases the range of explosion to the minimum.
- CAN'T STOP SICKNESS** .. Bomberman will not be able to stop moving until he runs into an obstacle.
- REVERSE SICKNESS** Reverses the control of Bomberman.
- SHORT FUSE SICKNESS** .. Causes the time it takes for a set bombs to explode to decrease.
- LONG FUSE SICKNESS** ... Causes the time it takes for a set bombs to explode to increase.



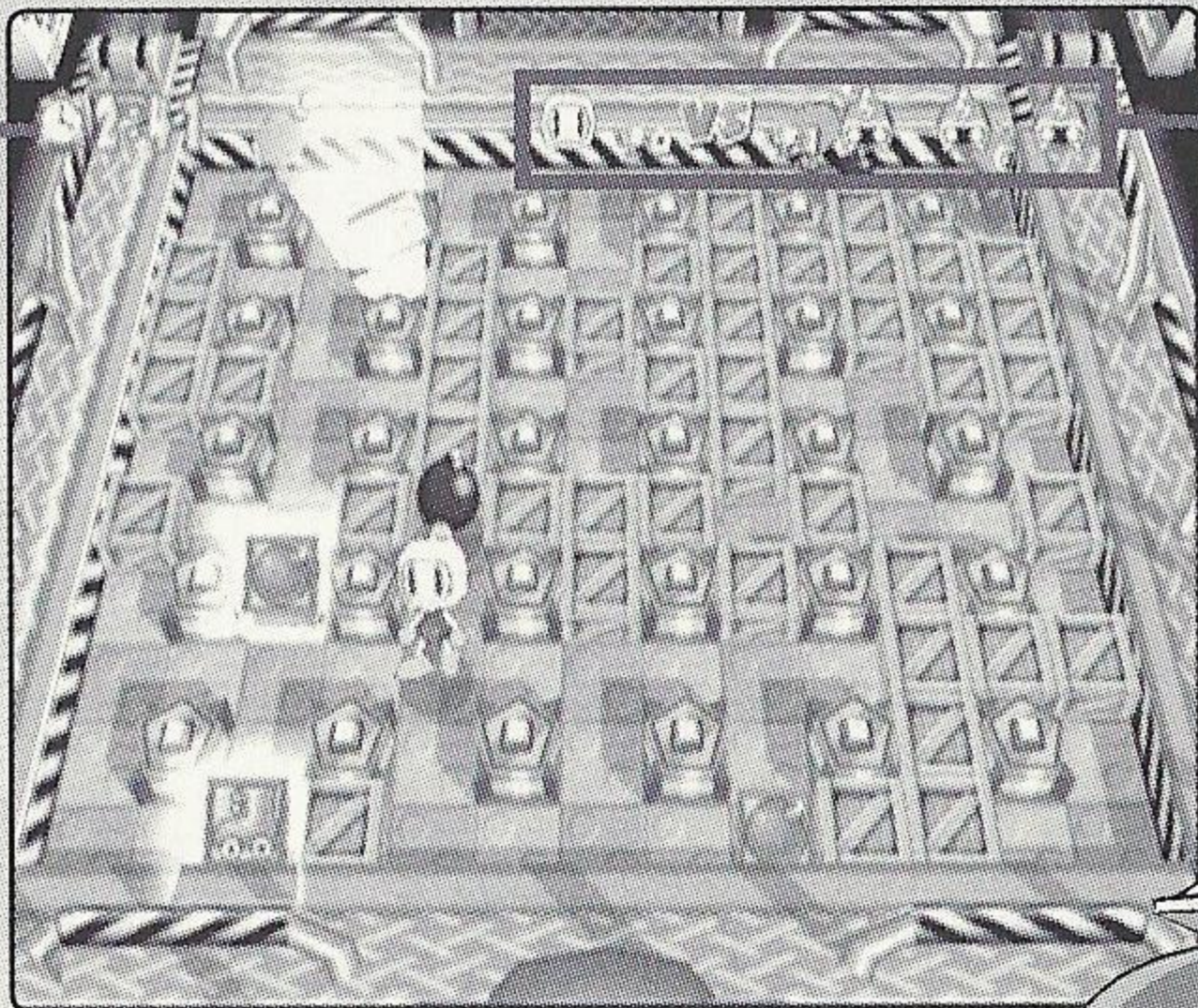
RULES OF THE GAME

There are five different battle rules in this game.

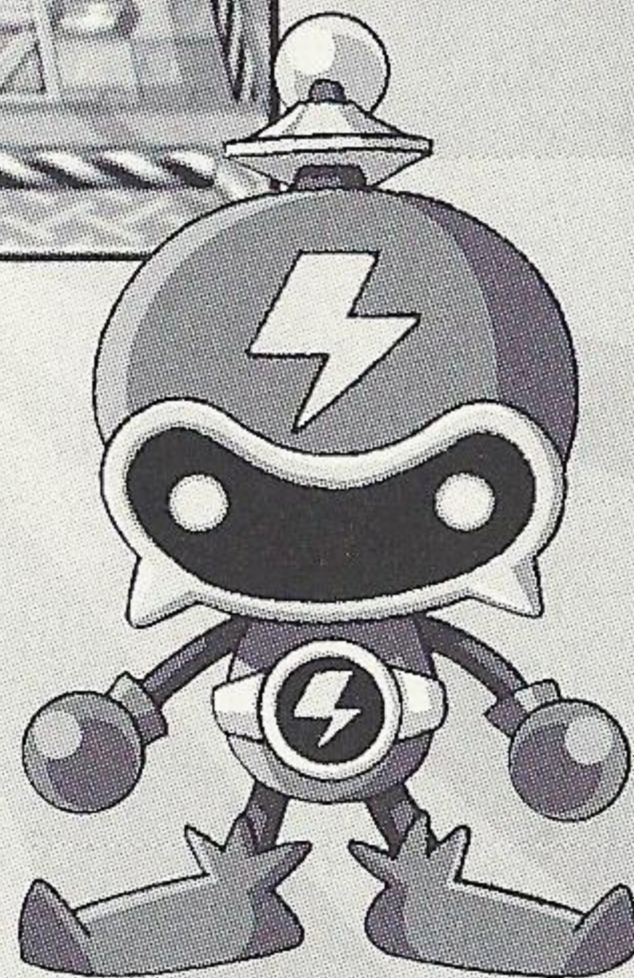
SURVIVAL RULE

It's an all-time favorite, classic Bomberman rule, where you place a bomb on the field and blast your opponents to win. There are item panels hidden inside some of the soft blocks. Collect them to power Bomberman up.

Time Remaining



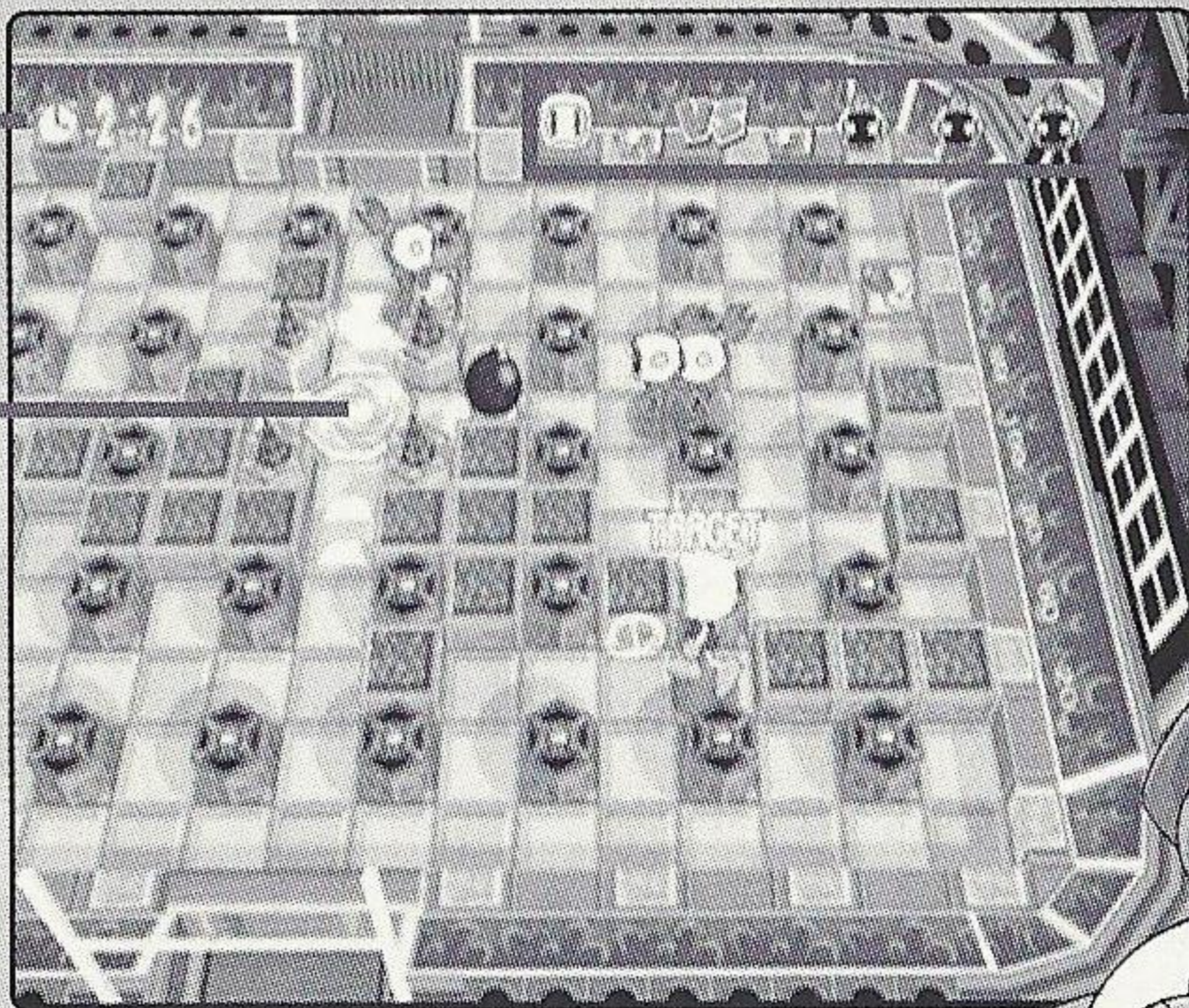
Number of
Matches Won



HYPER BOMBER RULE

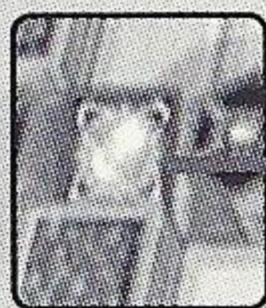
Collect three "target panels" hidden inside the various soft blocks, and enter the center gate to win. When your opponents collect the "target panels", use the bomb to blast them, and they will release them on the battlefield. In this rule, when you are blasted, you do not lose; you are simply sent back to the starting position, but you lose all your items.

Time Remaining

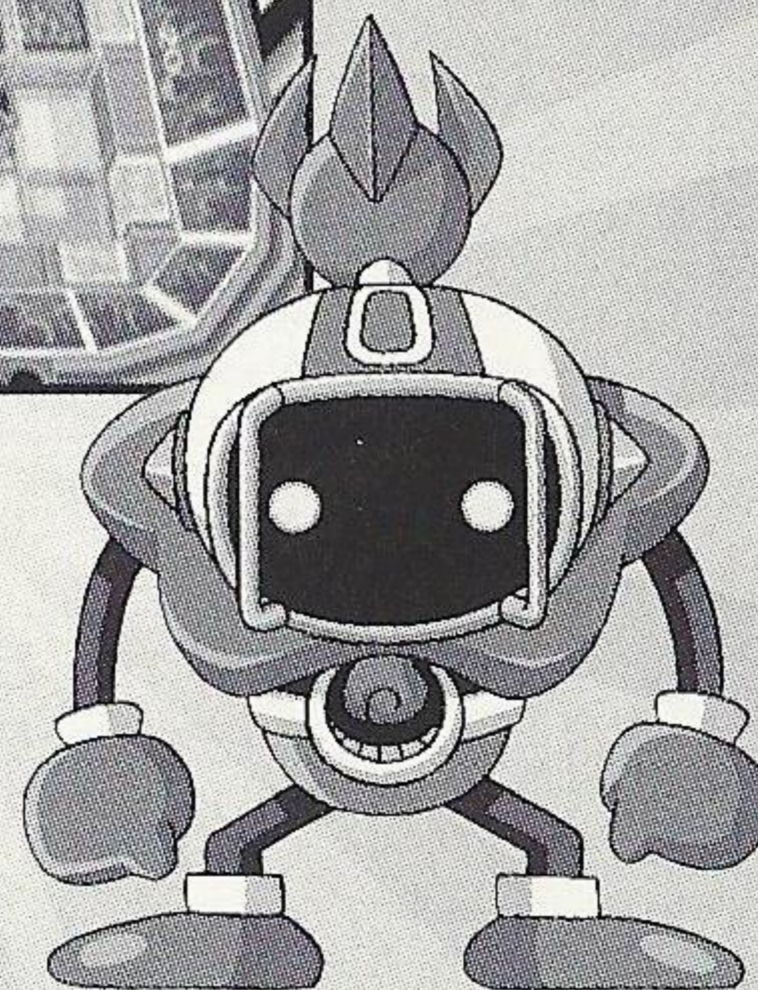


Number of Matches Won

Center Gate



Target Panel



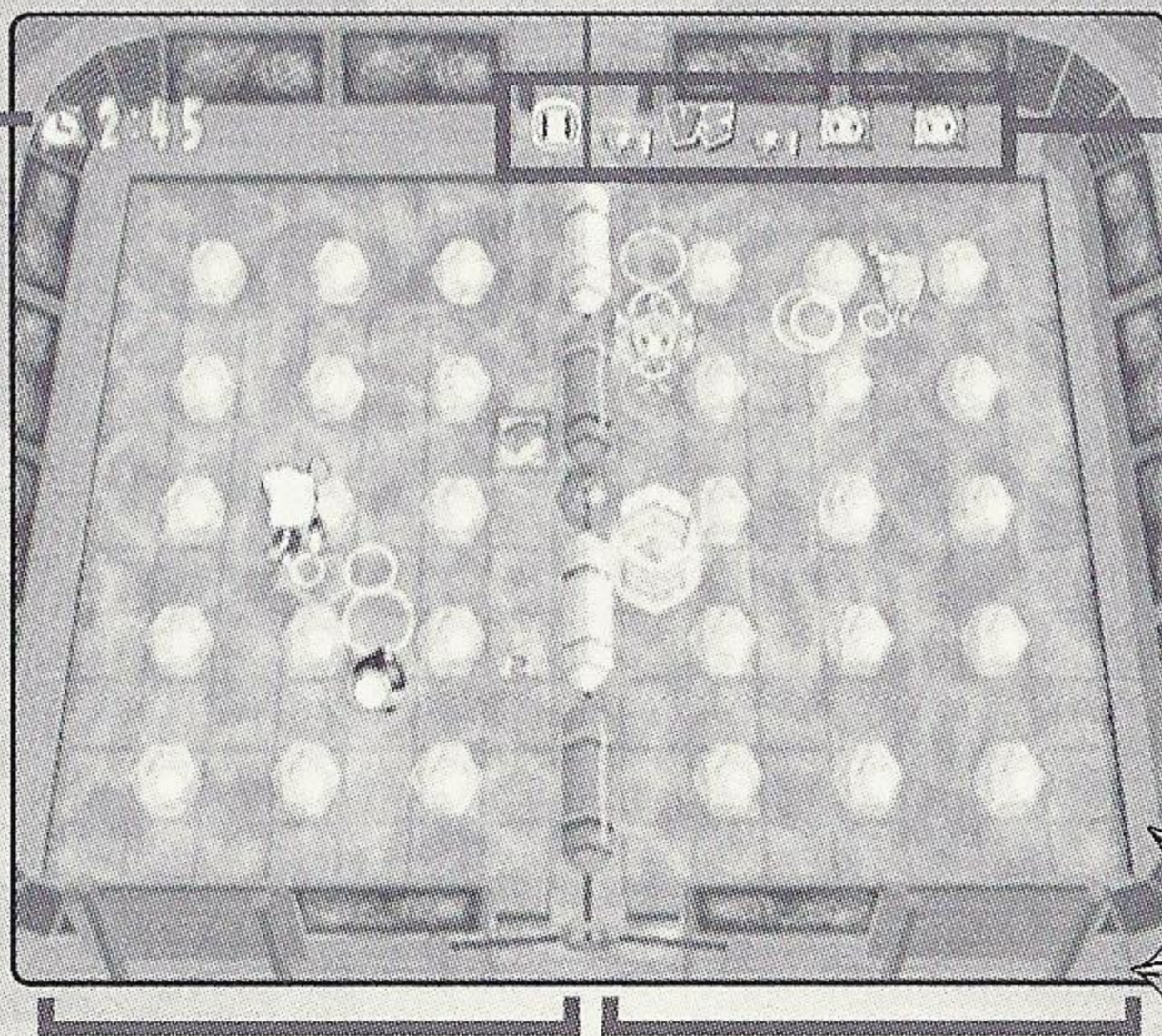
SUBMARINE RULE

The field is divided into two sides; your side and your opponents'. The bomb will be transported to your opponents' side just before exploding. If the destination where the bomb is being transported is occupied, the bomb will be sent back to your side. Grasp the positions of the bombs to defeat your opponents. This rule is for Team match only.

Time Remaining

2:45

Number of
Matches Won



Player Side

(Normal Game)

Team COOL Side

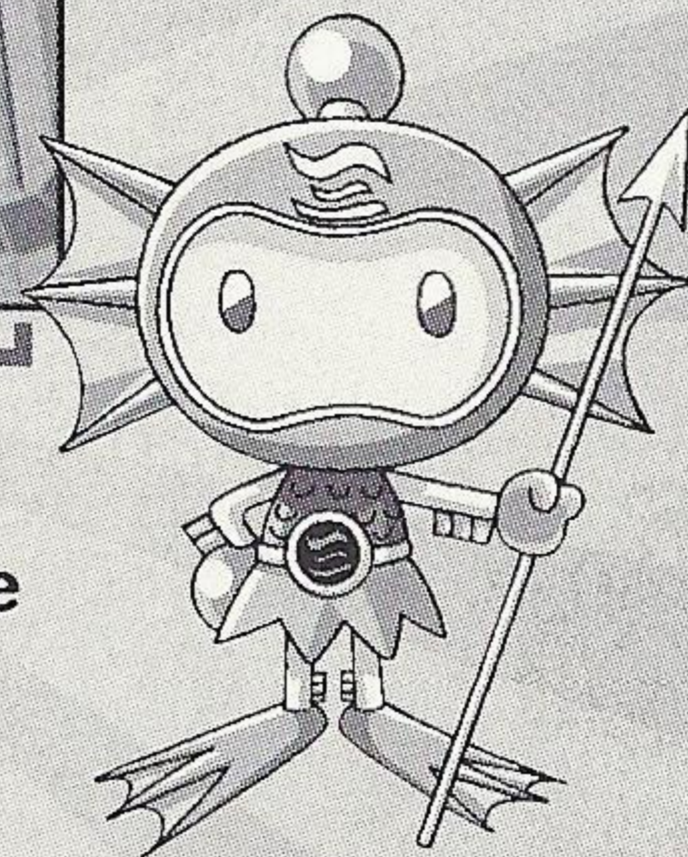
(Battle Game)

CPU Side

(Normal Game)

Team HEAT Side

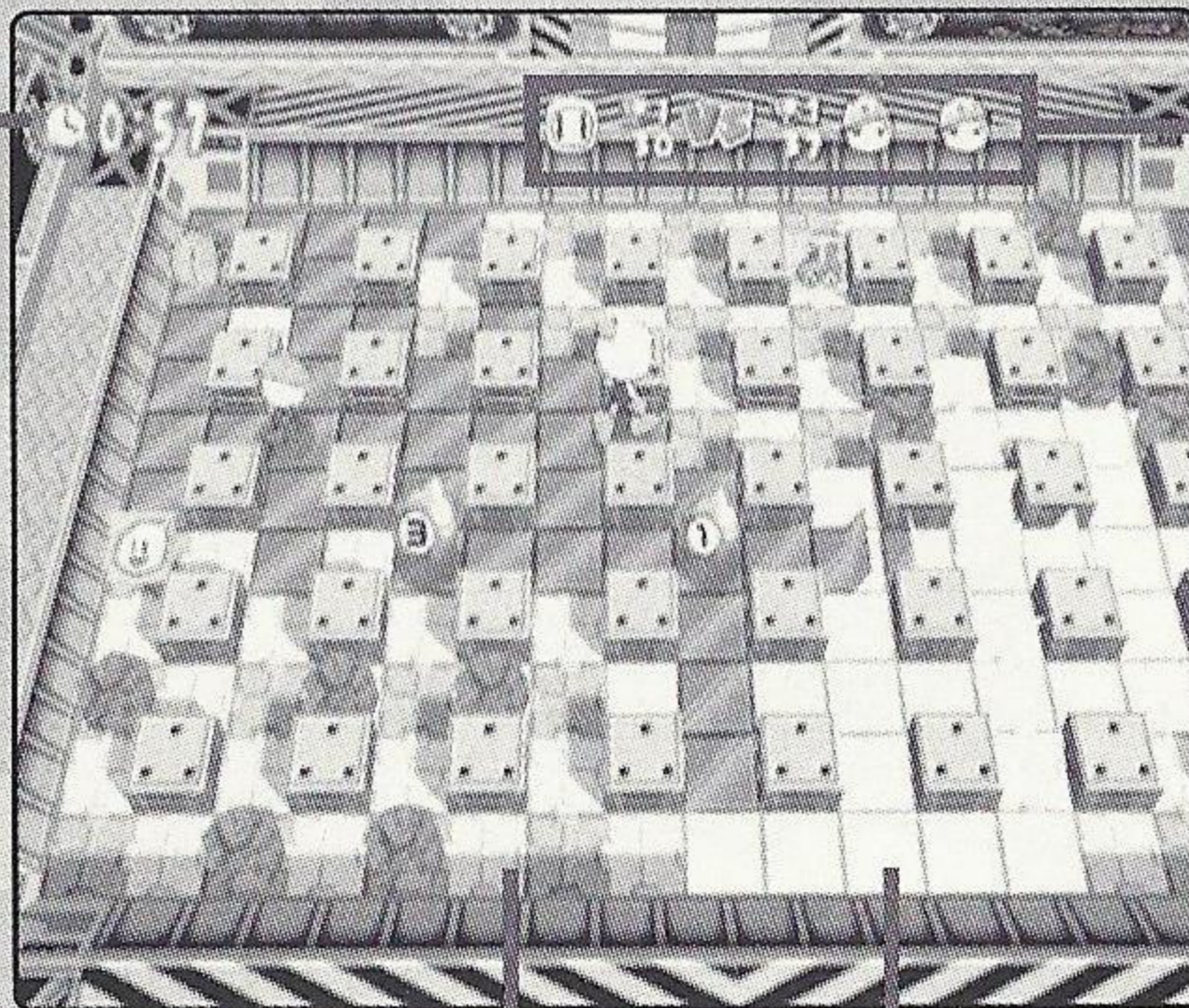
(Battle Game)



PANEL PAINT RULE

Blast the bomb, and paint the field with your color. At the end of game, the player with the most spaces in his/her color wins. With this rule, when you are blasted, you will not only be sent to the starting position, you will also lose all your painted spaces. Be careful not to be blasted near the end of the game. On Team match, the players will compete with the total of the team's colors.

Time Remaining



Number of
Matches Won/
Panels Painted

Unpainted Panels

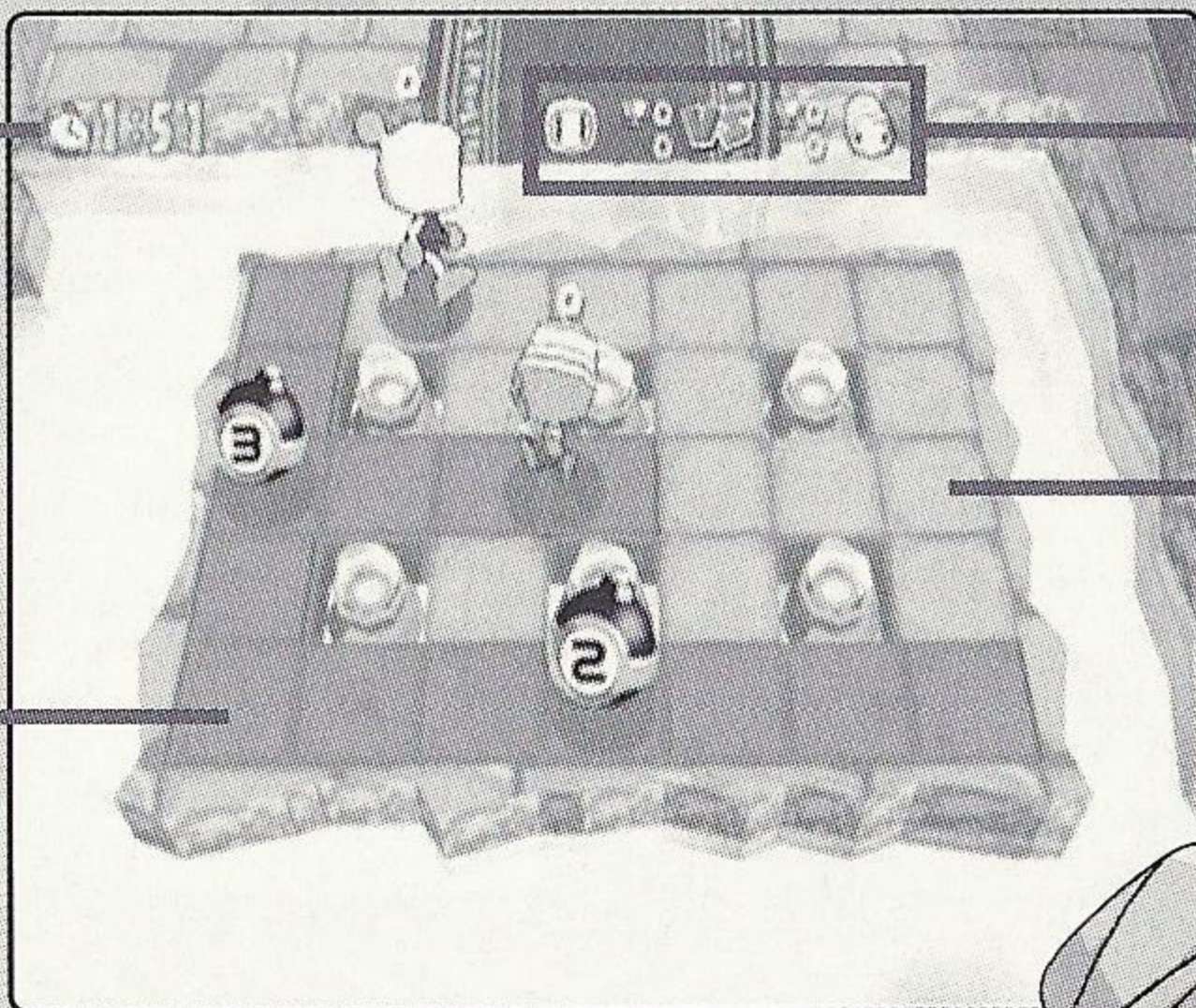
Painted Panels



RING MATCH RULE

Blast as many opponents in this small field, and compete in total points. When a bomb is placed, the areas in danger will turn red, so run to a safe area. You will gain 2 points for blasting each opponent, but will lose 1 point for being blasted. On Team match, the game is competed for total points of the team.

Time Remaining



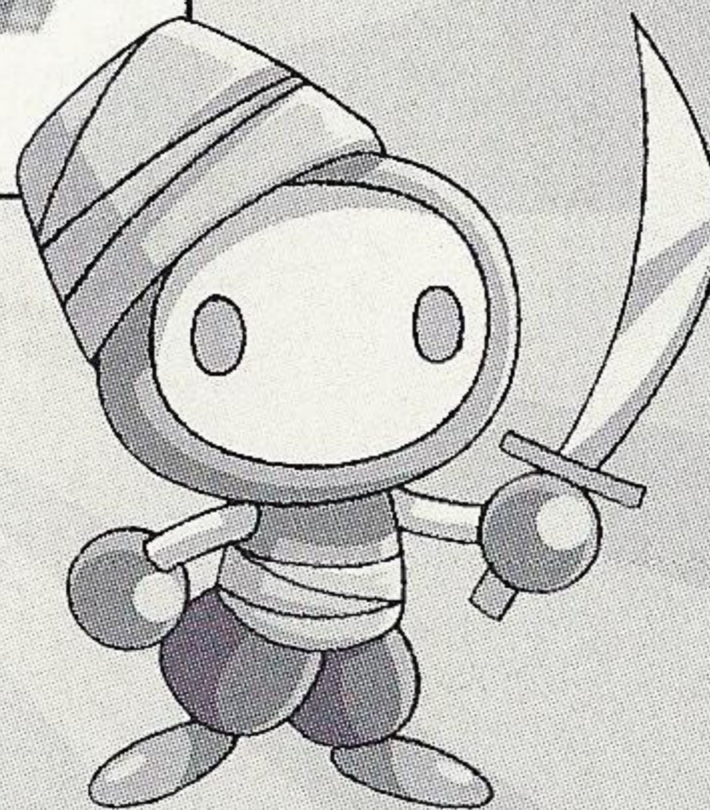
Number of Matches Won/
Points Gained

Safe Area



Danger Area

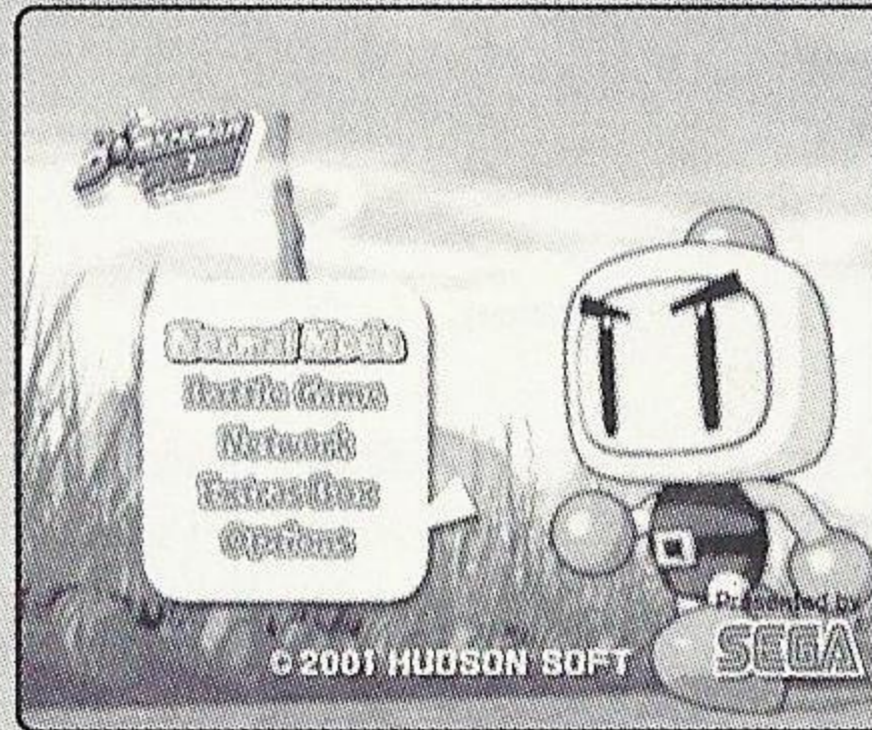


Number of Points Gained
Displayed above each player.



GAME MODES

Press the Start Button during the Title Screen to open a Main Menu. Use the D-Pad   to select from the following modes.



NORMAL GAME
BATTLE GAME
NETWORK
EXTRAS BOX
OPTIONS

p.14
p.15
p.19
p.24
p.26

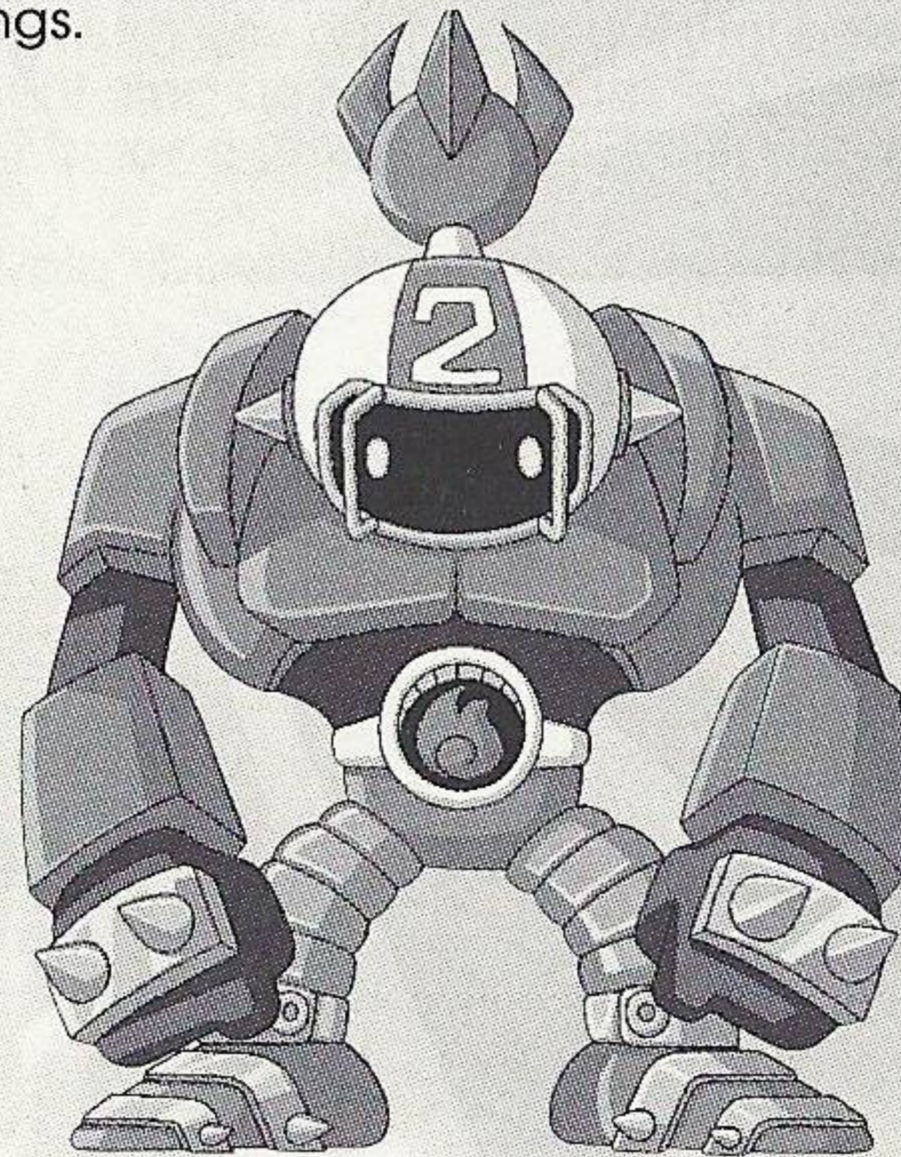
One-Player Story Mode game.

Play with up to 4 players for free battle.

Play an online battle. *Not all battle rules are available online.*

Change character/name for online battle; view Collection Panel.

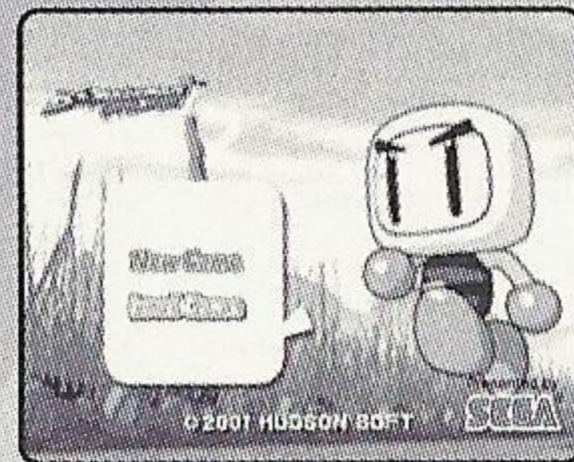
Change various settings.



NORMAL GAME

Play against the computer players in this story mode game.

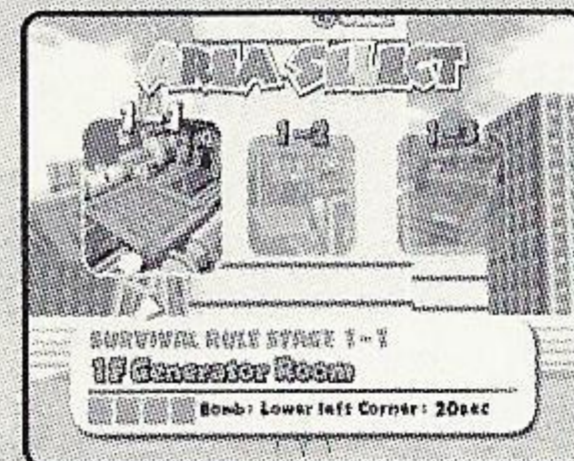
After you select this mode, you will be asked to select either **New Game** or **Load Game**. After selecting the file number, the game begins.



Use the D-Pad to select a stage to play. Each stage is played according to the preselected rule (p.8). You can start from any stage in the game.


Next, use the D-Pad to select the area within the stage to play. Each stage is divided into 3 areas which you must play a 2-Point Match in order. By clearing all three areas, you gain the right to compete in the Championship Battle (1-Point Match) against the Stage Boss..

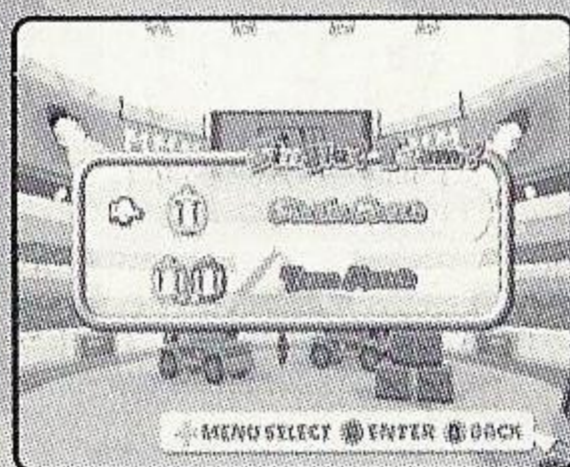
You can play the areas you have already played over again.






BATTLE GAME

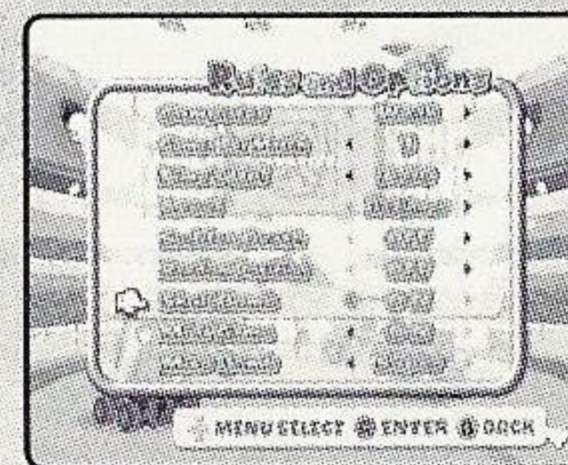
Play against the computer or with other players. Up to 4 players can play.

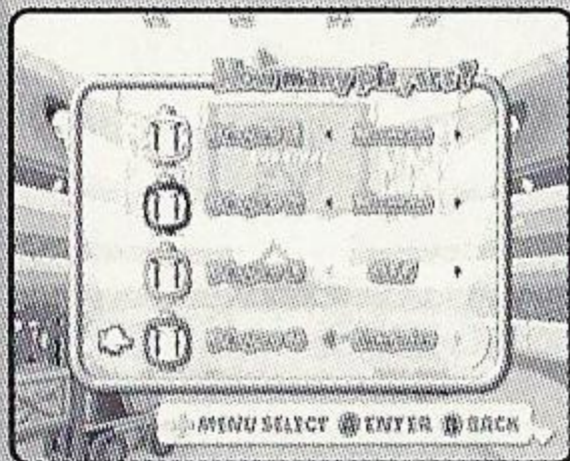
First, use the D-Pad  to select the rule to play. Press **A** to advance, and **B** to return to the Main Menu screen.



Next, use the D-Pad  to select between the Single Match or Team Match. Press **A** to advance, and **B** to return to the previous screen.

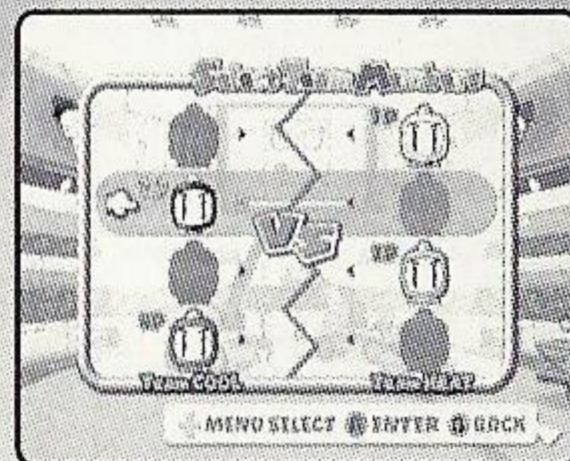
You can now select options for the game to be played. Use the D-Pad  to select the menu item, and  to adjust settings. Some of the menu items (or selection for the menu item) may not be available depending on the Game Rule or the Controller connection. For detailed descriptions of each menu items, see p.17. Press **A** to advance and **B** to return to the previous screen.





Next, select who is going to control each of the four available characters. Use the D-Pad \uparrow \downarrow to select the player, and \leftarrow \rightarrow to select who controls the player: **Human**, **Computer** or **OFF** (disable this player). Press **A** to advance and **B** to return to the previous screen. Note that the selection **Human** is available only if a Controller is connected to the assigned Control Port.

If you have selected Team Match, you will next select the team members. Use the D-Pad \uparrow \downarrow to select the player, and \leftarrow \rightarrow to select the team to be on. There must be at least one member on the team, as you cannot have all four players on one team. Press **A** to advance and **B** to return to the previous screen.



Finally you will select the stage to be played. Use the D-Pad \leftarrow \rightarrow to select the stage. Press **A** to start the game and **B** to return to the previous screen.

After the match, if the Mini Game option (p.18) is enabled, you have a shot at Bomber Karate. Use **R** to adjust the power and press **A** to break the bricks. The item you have gained will be equipped at the start of the next match.



OPTIONS FOR THE MATCH

You can adjust various settings for the match to be played. Here are the descriptions for each option menu items.

Computer

Adjusts the strength level of the computer controlled players. Select from **Weak**, **Normal** and **Strong**.

Games Per Match

Adjusts the points needed to win the Match, from **1** to **5**.

Times Up!

Adjusts the time limit for each battle, from **1** minute to **5** minutes. On Survival, Hyper Bomber, and Submarine Rules, if no winner is decided when the time runs out, the battle is declared a Draw. With Panel Paint and Ring Match Rules, the winner of the battle is declared by the total earned points at the end of the game. If the points are the same, the game is declared a Draw.

Level

Select the difficulty of the stages from **Beginner**, **Normal**, and **Advanced**. As the level of difficulty is raised, the stage maps become more technical.

Sudden Death

Select the settings for the Pressure Blocks that fall near the end of battle time. This option is available only with Survival Rule.

OFF

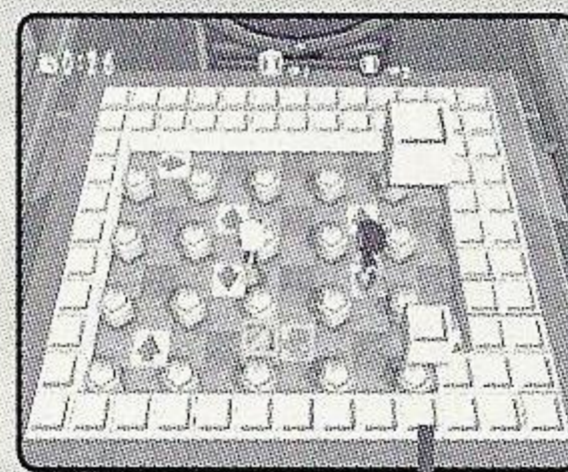
The Pressure Blocks only fall on the outer two rims of the playfield.

ON

The Pressure Blocks fall all the way to the center of the playfield, appearing in same order every time.

Random

The Pressure Blocks fall all the way to the center of the playfield, appearing randomly.



Pressure Blocks

Random Position

You can select whether to have the player start at different locations on the playfield. Select **ON** to enable this feature, or **OFF** to disable (the player appears at the same location each time).

Skull Bomb

OFF

If an explosion hits the Skull Panel, it will disappear. Also, the effect of Skull Panel will wear out after a given period of time.

ON

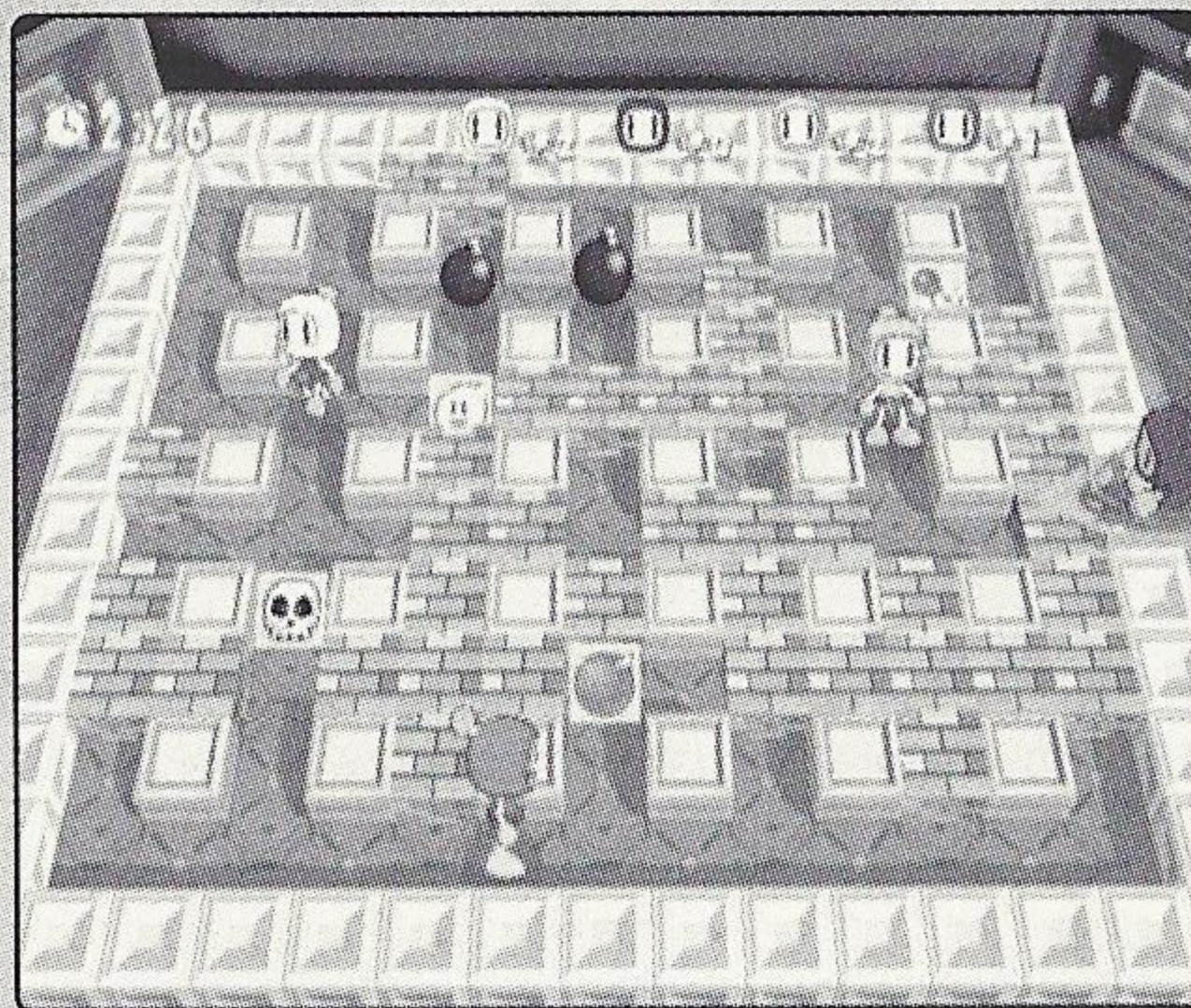
The Skull Panel will not disappear if an explosion hits it. Also, the effect of Skull Panel will remain until either you pick up another item panel or when you touch another player (the effect will be transferred to that player).

Mini Game

You can enable or disable the Mini Game (Bomber Karate) after the set Match finishes. *Note: this option is only available in Survival Rule.*

Miso Bomb



You can enable or disable the Miso Bomb feature. When enabled (**ON** or **Super**), after you are blasted, you will become a Miso Bomb and will be sent to the outer rim of the stage. You can control your character to obstruct the field players. If this is set to Super, you can switch places with the player on the field by blasting him/her. Note that this feature is available only with Survival and Submarine Rules. (With other rules, you will restart from the starting position after being blasted. Thus you cannot become a Miso Bomb).



Miso Bomb

NETWORK

Connect to the network server for online play.

Use the D-Pad   to select the menu item, and press **A** to enter. Press **B** to return to the Main Menu screen.

Net Battle

Connect to the game server to play online game.

Server Config

Change Server Configuration.



NOTES BEFORE YOU PLAY ONLINE



Before you connect online for network battle, you will need to set up a Character Name (which is going to be your user handle on the network). Please see p.24 on how to set up the Character Name.

Also, if you have not already configured ISP settings to your Dreamcast, use your Dreamcast browser disc to do so. Refer to the Dreamcast Browser instruction manual for details. **WARNING:** If you press **A** on a Warning overlay screen you will be brought back to the Dreamcast Title screen and not the Bomberman Online Title screen.



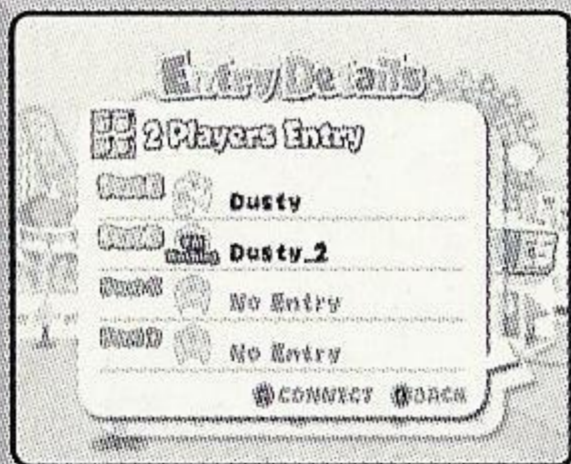
NET BATTLE

A Warning Notice and Operation Rules will be displayed. Read the message thoroughly and select Accept to advance. Select Decline to return to the Main Menu screen.

Next, select the number of players joining the online play. To have more than one player join the online play, you must connect the Dreamcast Controller in order from A, B, C, D. Use the D-Pad   to select the number of players, and press **A** to advance. Press **B** to return to the Main Menu screen.

Note that if you have a memory card with Bomberman Online game data on the Dreamcast Controller connected to the Control Port other than A, that player, too, can play with a registered character.

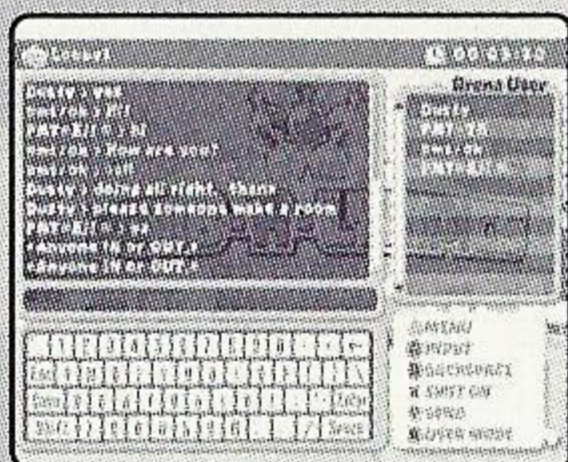
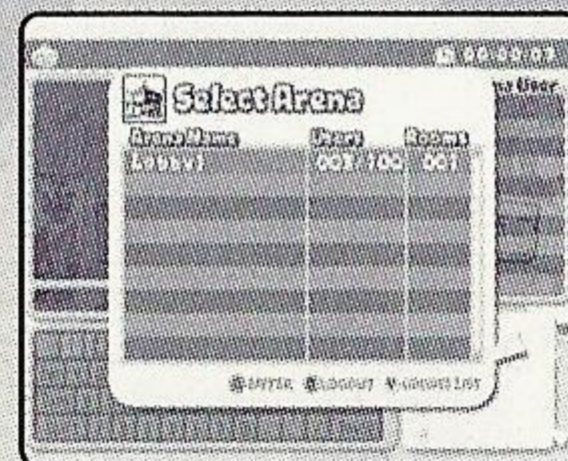




A confirmation screen will be displayed. The controller with no memory card will have a message "VM nothing" above the controller icon. Press **A** to connect to the network. Press **B** to return to the previous screen.

Server Login

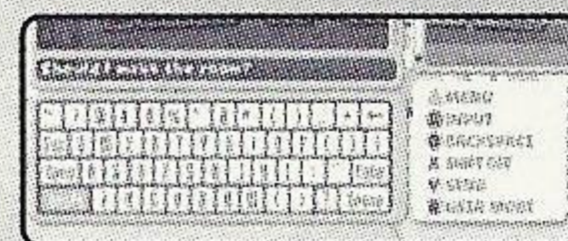
When you are successfully connected to the Network, a Select Arena window will be displayed. The window lists the available Arenas (lobbies), current number of users/maximum capacity of the Arena, and the number of rooms available in the Arena. Use the D-Pad **↑****↓** to select the Arena, and **A** to enter. Press **Y** to update the list. Press **B** to logout from the Network.



Inside the Arena, a large Chat Window is displayed at the top left, and an Arena User Window is displayed at the right side. You can use the Software Keyboard or the Dreamcast Keyboard to chat with other members in the Arena.

Software Keyboard

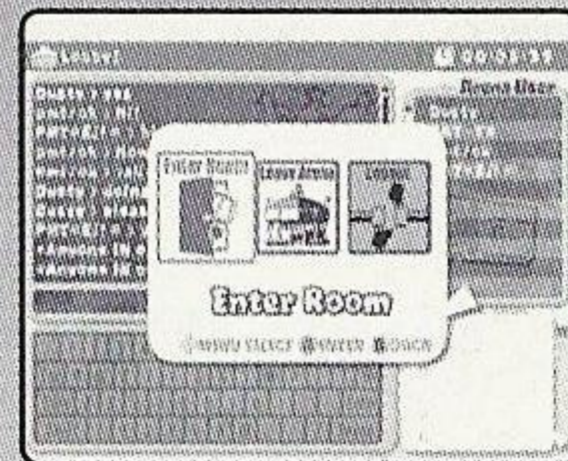
Use the D-Pad to select the key. Press **A** to type in the selected key. Either select the **Backarrow Key** or press **B** to backspace (delete a letter). Press **X** to toggle the Shift Key. Either select the **Enter Key** or press **Y** to send the message.



Arena Menu

Inside the Arena, press the Start Button to display the Arena Menu. The following menu items are available.

- Enter Room** Enter existing Game Room, or create a new one.
Leave Arena Leave the current Arena and return to the Arena Select screen.
Logout Log out of the network.



Game Room

When Enter Room is selected, a list of available Game Rooms (with current number of participants/maximum capacity) will be displayed. Use the D-Pad \uparrow \downarrow to select the Room. Press **A** to enter the Room, **X** to display information (list of current members in the Room), and **Y** to update the list. Or you can press the Start Button to make a Room. Press **B** to return to the Arena.

When creating a room, you will need to enter the Room name, and select the Room capacity (2~8). Select **OK** to create, and **CANCEL** to stop. Once the Room is made, you become the Room Master with the privilege to set up the rules of the game.



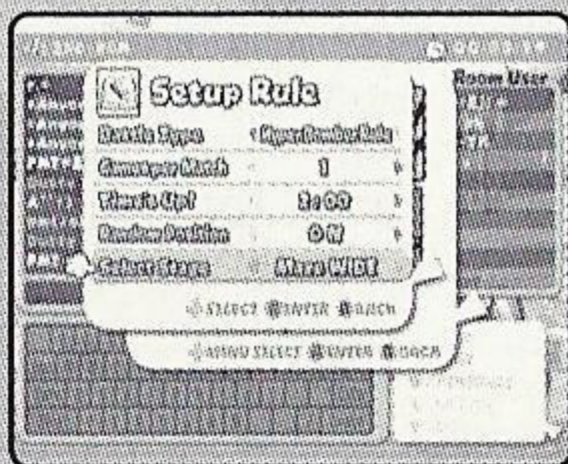
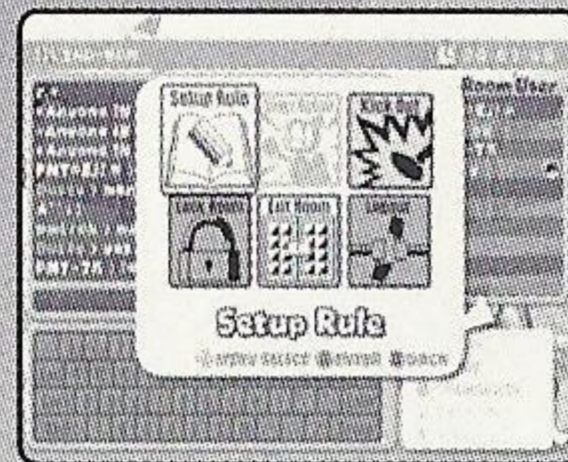
Once inside the Game Room, the Room Members can chat with each other. Use the chat to discuss the rules of the battle to be played.

Also, press the Start Button to display a Room Menu. The Room Menu differs from the Room Master and the other members.

Room Menu (Room Master)

The Room Master has the privilege to set up the battle rule, as well as to keep the Room in order. The following menu items are available to the Room Menu.

- Set up Rule** Set up the rule for the battle.
- Start Battle** When everyone is ready, select this to start the battle.
- Kick Out** Send a room member out of the Game Room to the Arena.
- Lock Room** Lock the Room to disallow further entry.
- Exit Room** Leave the Room and return to the Arena.
- Log Out** Log out of the network.



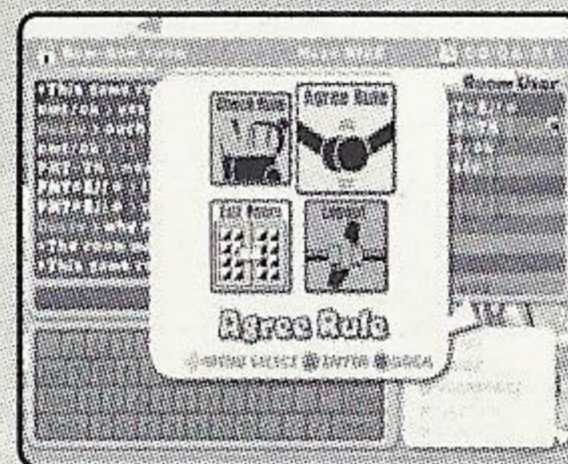
The following options are available to set up the rule of the battle:

- Battle Type** Select either the **Survival Rule** or **Hyper Bomber Rule**.
- Games per Match** Select the number of games needed to win the match (1~5).
- Time's Up** Select the time limit (2:00~5:00)
- Random Position** Enable/disable the random starting position.
- Select Stage** Select the type of stage to play the match.

Room Menu (Room Members)

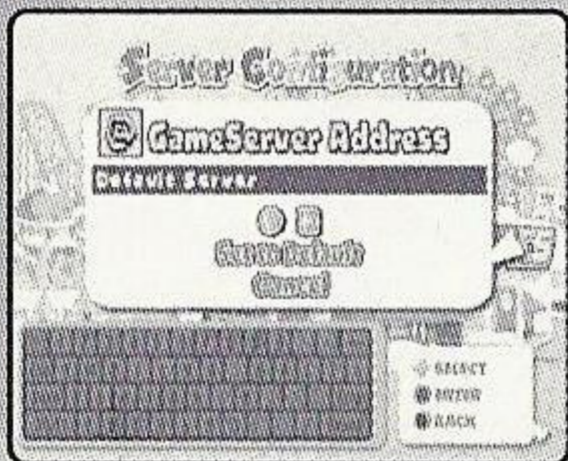
The Room Members have the following menu items for the Room Menu.

- Check Rule** View and verify the rules the Room Master has selected.
- Agree Rule** Select this when you agree to the rules.
- Exit Room** Leave the Room and return to the Arena.
- Log Out** Log out of the network.



Room Member Window

The Room Master will have an "M" icon next to his/her name on the Room Member Window. When the Room Master leaves the room, a new Room Master will automatically be selected. You can check who is the new Room Master by the location of the icon. Also, when the Room Member agrees on the rules set up by the Room Master an "OK" mark will be displayed next to his/her name. The Room Master should check this before starting the game.



SERVER CONFIG

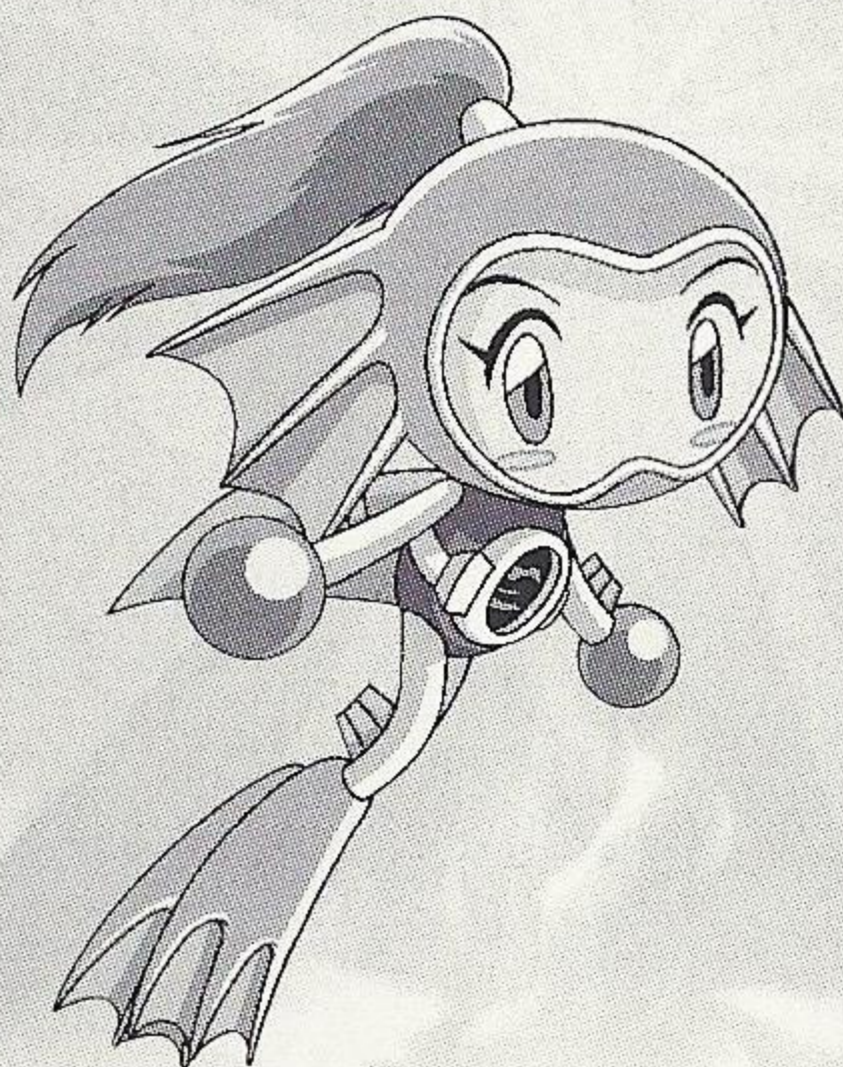
You can change the server to which you will connect on Network play. Normally you do not need to make changes with this menu. Upon necessity, the information may be given over the web page.

ONLINE PLAY

In order to play this game online, you must have a valid SegaNet subscription. If you do not already have an account, you can subscribe to SegaNet for only \$9.95 a month and clash with fellow console gamers from around the planet. Your SegaNet subscription gives you unlimited access to the extensive SegaNet network of game servers - including Bomberman Online, Sega Sports online titles, and many other top-notch console games. Join tournaments and ladders, get ranked, showcase your trophies, and get other exclusive features.

All you need is an Internet Service Provider (ISP),* a Dreamcast, and a credit card, and you're all set to subscribe to SegaNet. You must be 18 or older to subscribe - if you're under 18, please ask your parents to sign up for you. For more information, please visit our web site at www.sega.com/bomberman.

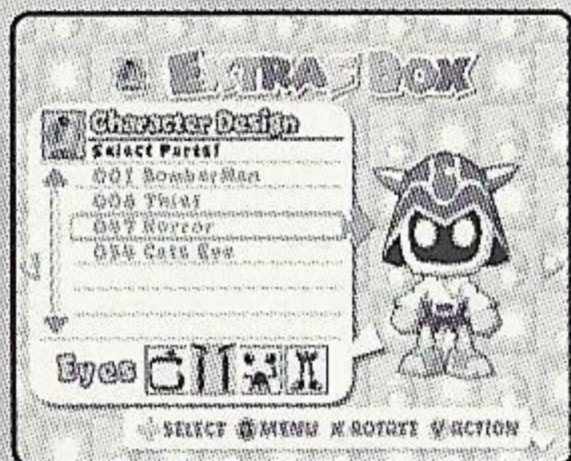
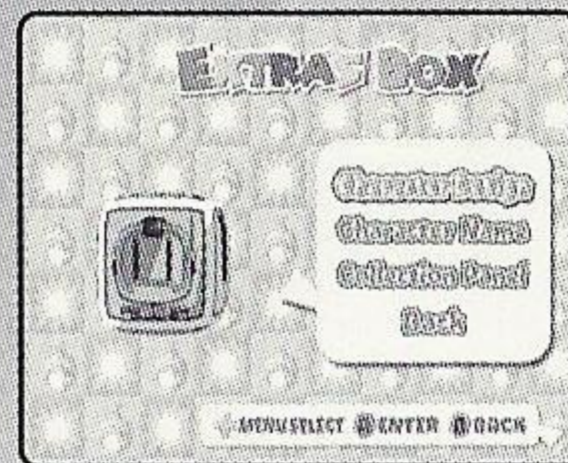
*SegaNet service is available to all Dreamcast-compatible ISPs. There are known connectivity problems with some ISPs, such as America Online. Please check with your ISP to ensure compatibility with SegaNet.



EXTRAS BOX

Here, you can change the appearance of the character and the name when you play the Network battle, as well as to view the Collection Panels you have collected so far. Use the D-Pad \uparrow / \downarrow to select the menu item, and press **A** to enter. Either select **Back** or press **B** to return to the Main Menu screen.

Inside each sub-modes, use **L/R** to move to the previous/next sub-mode.



CHARACTER DESIGN

You can change the appearance of the character for the Network battle. Use the D-Pad \leftarrow / \rightarrow to select the parts of the body, and \uparrow / \downarrow to select from the available selections of each part. According to the number of Collection Panels collected (p.25), the number of available body parts will increase. Press **X** to rotate the character to view it from a different angle, and **Y** to view the character's walking animation. When done, press **B** to return to the Extras Box Menu screen.

CHARACTER NAME

You can enter the designed Character's name with the software keyboard or the Dreamcast Keyboard. You **MUST** have a Character Name to play online in Network Battle.

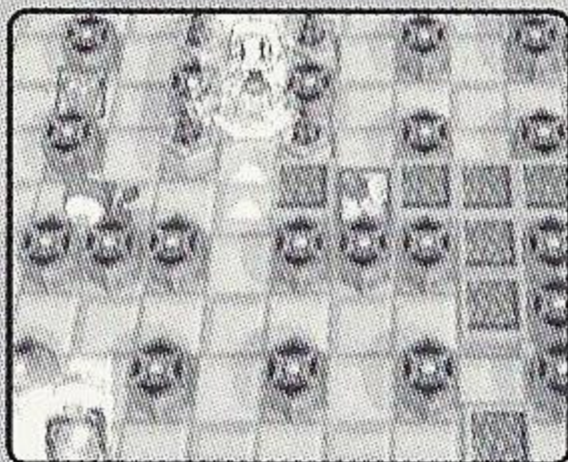
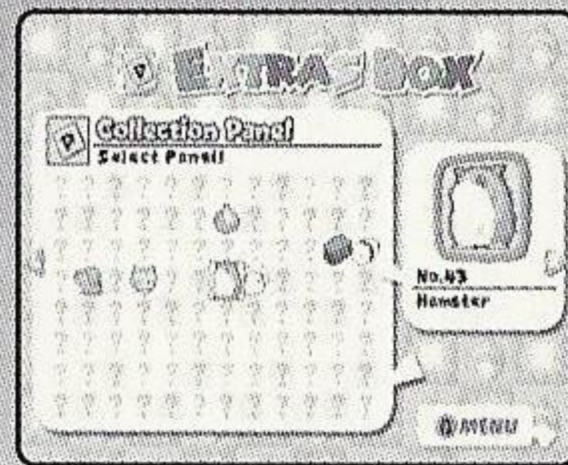
ATTENTION

The Character Name is your handle for Network battle. Please do not use any words or language for your character name that may be offensive to other players.



COLLECTION PANEL

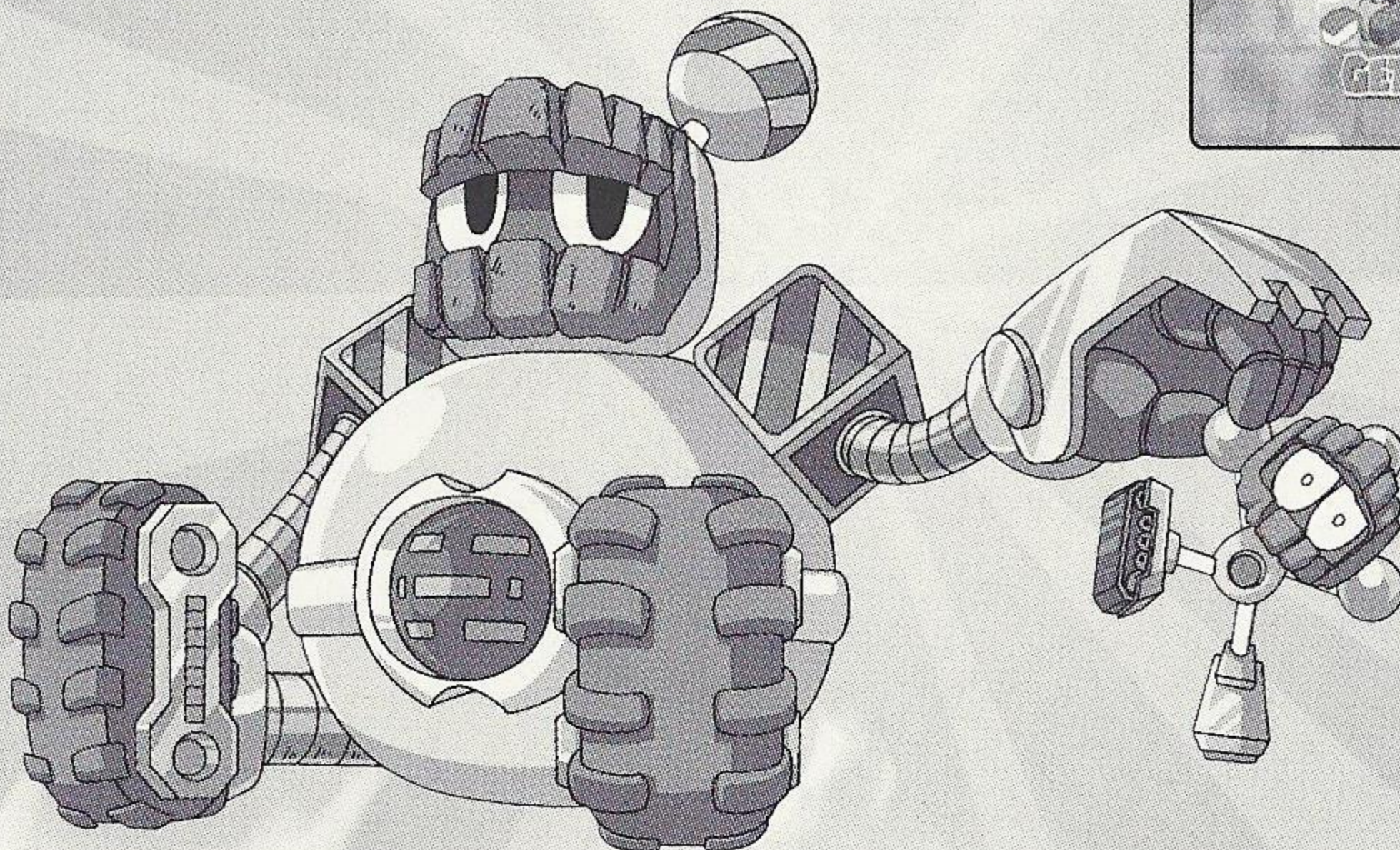
You can view the Collection Panels you have collected so far. Use the D-Pad to select the Panel you wish to view.



What are Collection Panels?

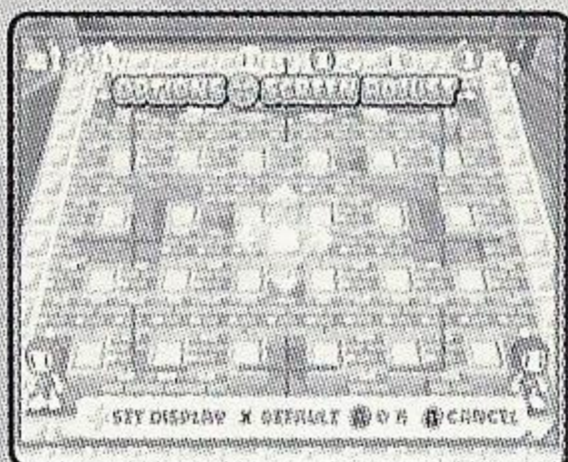
Collection Panels are special item panels that appear, when the conditions are met, on each stage of the Normal Game. By itself, there are no effects. But by collecting them, the number of body parts selection for the character to use with the Network battle increases.

There are four Collection Panels hidden inside each Area of each Stage. Rarely during the Net battle, however, it may appear by destroying any soft block.



OPTIONS

You can adjust various settings, and listen to the music/sound effects used in the game. Use the D-Pad $\leftarrow\rightarrow$ to select the menu item, and press **A** to enter. Press **B** to return to the Main Menu screen.



SCREEN ADJUST

If you have difficulty seeing the edges of the game field, select this to adjust the screen position. Use the D-Pad $\uparrow\downarrow\leftarrow\rightarrow$ to adjust the screen. Press **X** to bring the screen to the default position. Press **A** to enter, or **B** to cancel and return to Options Menu.

CONTROL BUTTON SETTING

You can change button assignments for each port. The Menu for each ports with the Dreamcast Controller connected will be active, so configure separately. First, press **A** to activate the menu for each Port. Use the D-Pad $\uparrow\downarrow$ to select the menu item, and press the button you wish to assign the game command to. Select **DEFAULT** to bring the setting back to the default setting. Select OK to enter the configuration. When done, press **B** to return to the Options Menu.

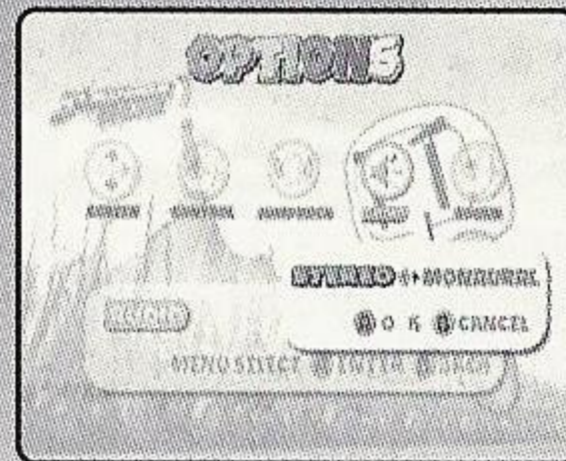


JUMP PACK SETTING

You can enable or disable the Jump Pack. Use the D-Pad $\leftarrow\rightarrow$ to select **ON** or **OFF**, and press **A** to enter. Press **B** to cancel selection.

AUDIO

Here you can adjust the sound output. Use the D-Pad $\leftarrow\rightarrow$ to select **STEREO** or **MONAURAL**, and press **A** to enter. Press **B** to cancel selection.



SOUND TEST

You can listen to the background music and sound effects used in the game. Use the D-Pad $\uparrow\downarrow$ to select between **BGM** and **SE**, and $\leftarrow\rightarrow$ to select the music/sound effects selection number. Press **A** to listen to the music/sound effects. Press **B** to return to the Options Menu.



CREDITS

The following credits list the staff responsible for the localization, marketing and manual development for the U.S. version of Bomberman Online. Credits for the original development staff of the game are listed in the credits of the game itself.

Product Development

Vice President of PD

Jin Shimazaki

Localization Manager

Osamu Shibamiya

Localization Producer

Jason Kuo

Network Architect

Takashi Kosaka

Lead Tester

Nestor Protacio Jr.

Assistant Lead Testers

Davidson Talag

Ray Murakawa

Testers

Joseph Amper, Robert Anthony, Seth Benson, Marvin Blanton, Daniel Chang, Derrick Chin, Mabel Chung, John Diamonon, Antonio Eco, Alan Hsu, Berjes Enriquez, Jason Jensen, Walter Kim, Chester Lee, Christina Mendez, Jason Mercer, Joshua Pfeiffer, Derek Wong, Catherine Yu, John Yu

Marketing

Director of Product Marketing

Mike Fischer

Product Manager

Rich Briggs

Associate Product Manager

Noah Musler

Public Relations

Gwen Marker

Teri Higgins

Creative Services

Director of Creative Services

Robert Schonfisch

Project Manager

Angela Santos

Project Coordinator

Arianne Pitts

Special Thanks

Peter Moore
Sandy Castagnola
Paulita Escalona
Kuroki Koji
Mike Rhinehart

Sega.com

SegaNet Producer

Arthur Datangel

Lead Network Analyst

Jason Nolen

DC Server Operations

Douglas Land

Eric Fehr

Director of Games

Jerome Markota

QA Manager

Lancelot Nelson

QA Analysts

Nicolas J. Azizian, Darren Nagtalon, Josh Simpson, Clifford Wilhelm

Network Support Team

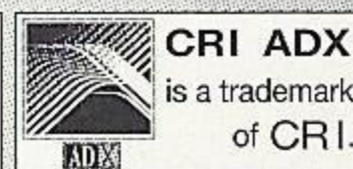
Britt Morris, Gary Crumback, Sami Tabikh, Scott Foe, Kevin Kwan

Business Development

Keitaro Shigemasa
Rie Wani

Special Thanks

Ryoichi Shiratsuchi
Eugene Archibald



****THIS LIMITED WARRANTY IS VALID FOR U.S. AND CANADIAN SEGA DREAMCAST SOFTWARE MANUFACTURED FOR SALE IN AND PURCHASED AND OPERATED IN THE UNITED STATES AND CANADA, ONLY!***

Limited Warranty

Sega of America, Inc. warrants to the original consumer purchaser that the Sega Dreamcast GD-ROM shall be free from defects in material and workmanship for a period of 90-days from the date of purchase. If a defect covered by this limited warranty occurs during this 90-day warranty period, the defective GD-ROM or component will be replaced free of charge. This limited warranty does not apply if the defects have been caused by negligence, accident, unreasonable use, modification, tampering or any other causes not related to defective materials or workmanship. Please retain the original or a photocopy of your dated sales receipt to establish the date of purchase for in-warranty replacement. For replacement, return the disc, with its original packaging and receipt, to the retailer from which the software was originally purchased. In the event that you cannot obtain a replacement from the retailer, please contact Sega to obtain support.

Obtaining technical support/service

To receive additional support, including troubleshooting assistance, please contact Sega at web site (http://www.sega.com/customer_service), e-mail (support@sega.com), or 800 number (1-800-USA-SEGA). Instructions en français, téléphoner au (1-800-872-7342).

LIMITATIONS ON WARRANTY

ANY APPLICABLE IMPLIED WARRANTIES, INCLUDING WARRANTIES OF MERCHANTABILITY AND FITNESS FOR A PARTICULAR PURPOSE, ARE HEREBY LIMITED TO 90-DAYS FROM THE DATE OF PURCHASE AND ARE SUBJECT TO THE CONDITIONS SET FORTH HEREIN. IN NO EVENT SHALL SEGA OF AMERICA, INC., BE LIABLE FOR CONSEQUENTIAL OR INCIDENTAL DAMAGES RESULTING FROM THE BREACH OF ANY EXPRESS OR IMPLIED WARRANTIES. THE PROVISIONS OF THIS LIMITED WARRANTY ARE VALID IN THE UNITED STATES ONLY. SOME STATES DO NOT ALLOW LIMITATIONS ON HOW LONG AN IMPLIED WARRANTY LASTS, OR EXCLUSION OF CONSEQUENTIAL OR INCIDENTAL DAMAGES, SO THE ABOVE LIMITATION OR EXCLUSION MAY NOT APPLY TO YOU. THIS WARRANTY PROVIDES YOU WITH SPECIFIC LEGAL RIGHTS. YOU MAY HAVE OTHER RIGHTS WHICH VARY FROM STATE TO STATE.

ESRB RATING

This product has been rated by the Entertainment Software Rating Board. For information about the ESRB rating, or to comment about the appropriateness of the rating, please contact the ESRB at 1-800-771-3772.

Sega is registered in the U.S. Patent and Trademark Office. Sega, Dreamcast, and the Dreamcast logo are either registered trademarks or trademarks of Sega Corporation. Bomberman is a registered trademark of Hudson Soft. ©2001 HUDSON SOFT. This game is licensed for use with the Sega Dreamcast system only. Copying and/or transmission of this game is strictly prohibited. Unauthorized rental or public performance of this game is a violation of applicable laws. ©SEGA CORPORATION, 2001. Sega of America Dreamcast, Inc. P.O. Box 7639, San Francisco, CA 94120. All Rights Reserved. www.sega.com. Programmed in Japan. Made and printed in the USA. WARNING: Operates only with NTSC televisions and Sega Dreamcast systems purchased in North and South America (except Argentina, Paraguay and Uruguay). Will not operate with any other televisions, or Sega Dreamcast systems. Product covered under one or more U.S. Patents: 5,460,374; 5,627,895; 5,688,173; 4,442,486; 4,454,594; 4,462,076; 6,102,800 Re. 35,839; Japanese Patent No. 2870538 (Patents pending in U.S. and other countries); Canadian Patent No. 1,183,276. The ratings icon is a trademark of the Interactive Digital Software Association.

MULTI-PLAYER COMBAT
WITH TROPICAL PUNCH

Ooga Booga



Coming Soon!

Sega is registered in the US Patent and Trademark Office. Sega, Dreamcast, the Dreamcast logo and Ooga Booga are either registered trademarks or trademarks of Sega Corporation. © SEGA CORPORATION, 2001. All Rights Reserved. www.sega.com

