

# HAPPY FEET™



## INSTRUCTION BOOKLET



# Warning

**WARNING: READ BEFORE USING YOUR PLAYSTATION®2 COMPUTER ENTERTAINMENT SYSTEM.** A very small percentage of individuals may experience epileptic seizures when exposed to certain light patterns or flashing lights. Exposure to certain patterns or backgrounds on a television screen or while playing video games, including games played on the PlayStation 2 console, may induce an epileptic seizure in these individuals. Certain conditions may induce previously undetected epileptic symptoms even in persons who have no history of prior seizures or epilepsy. If you, or anyone in your family, has an epileptic condition, consult your physician prior to playing. If you experience any of the following symptoms while playing a video game — dizziness, altered vision, eye or muscle twitches, loss of awareness, disorientation, any involuntary movement, or convulsions — **IMMEDIATELY** discontinue use and consult your physician before resuming play.

#### **WARNING TO OWNERS OF PROJECTION TELEVISIONS:**

Do not connect your PlayStation 2 console to a projection TV without first consulting the user manual for your projection TV, unless it is of the LCD type. Otherwise, it may permanently damage your TV screen.

#### **USE OF UNAUTHORIZED PRODUCT:**

The use of software or peripherals not authorized by Sony Computer Entertainment America may damage your console and/or invalidate your warranty. Only official or licensed peripherals should be used in the controller ports or memory card slots.

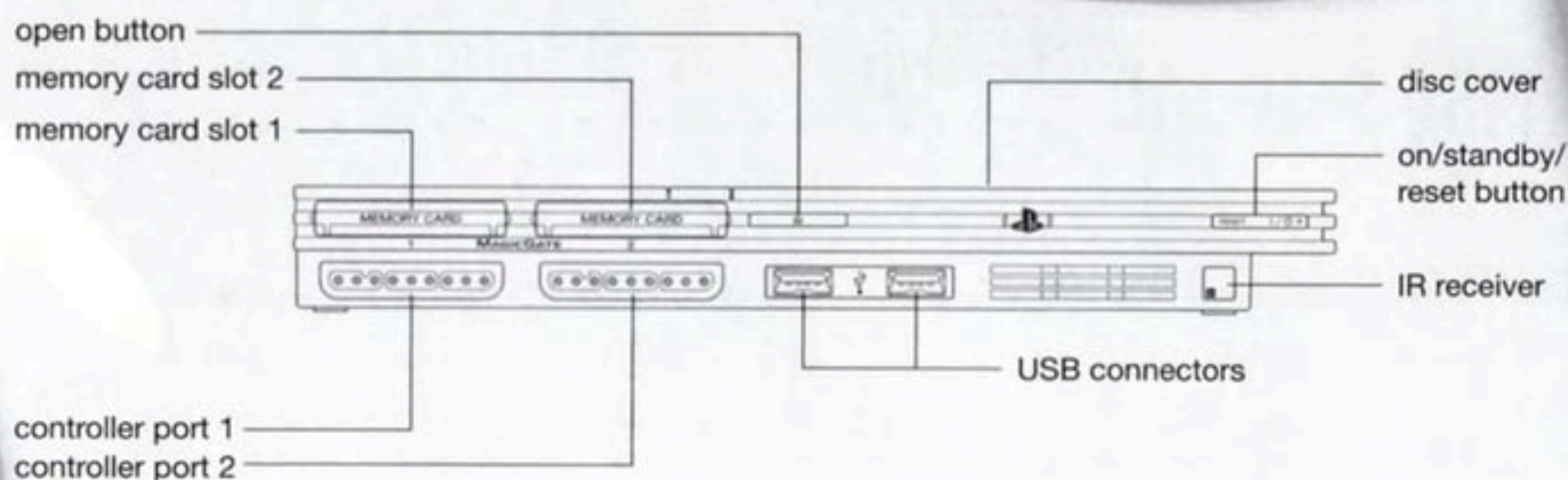
#### **HANDLING YOUR PLAYSTATION 2 FORMAT DISC:**

- This disc is intended for use only with PlayStation 2 consoles with the NTSC U/C designation.
- Do not bend it, crush it or submerge it in liquids.
- Do not leave it in direct sunlight or near a radiator or other source of heat.
- Be sure to take an occasional rest break during extended play.
- Keep this compact disc clean. Always hold the disc by the edges and keep it in its protective case when not in use. Clean the disc with a lint-free, soft, dry cloth, wiping in straight lines from center to outer edge. Never use solvents or abrasive cleaners.

# Contents

Getting Started.....	2
Starting Up.....	3
Story.....	4
Controls.....	5
Main Menu .....	6
Story Mode.....	7 - 9
The Story Mode Map .....	7
Belly-Sledding.....	8
Dancing.....	8
Swimming .....	9
Family Mode.....	10
Credits .....	11 - 14
Music.....	14 - 15
Warranty .....	17

# Getting Started



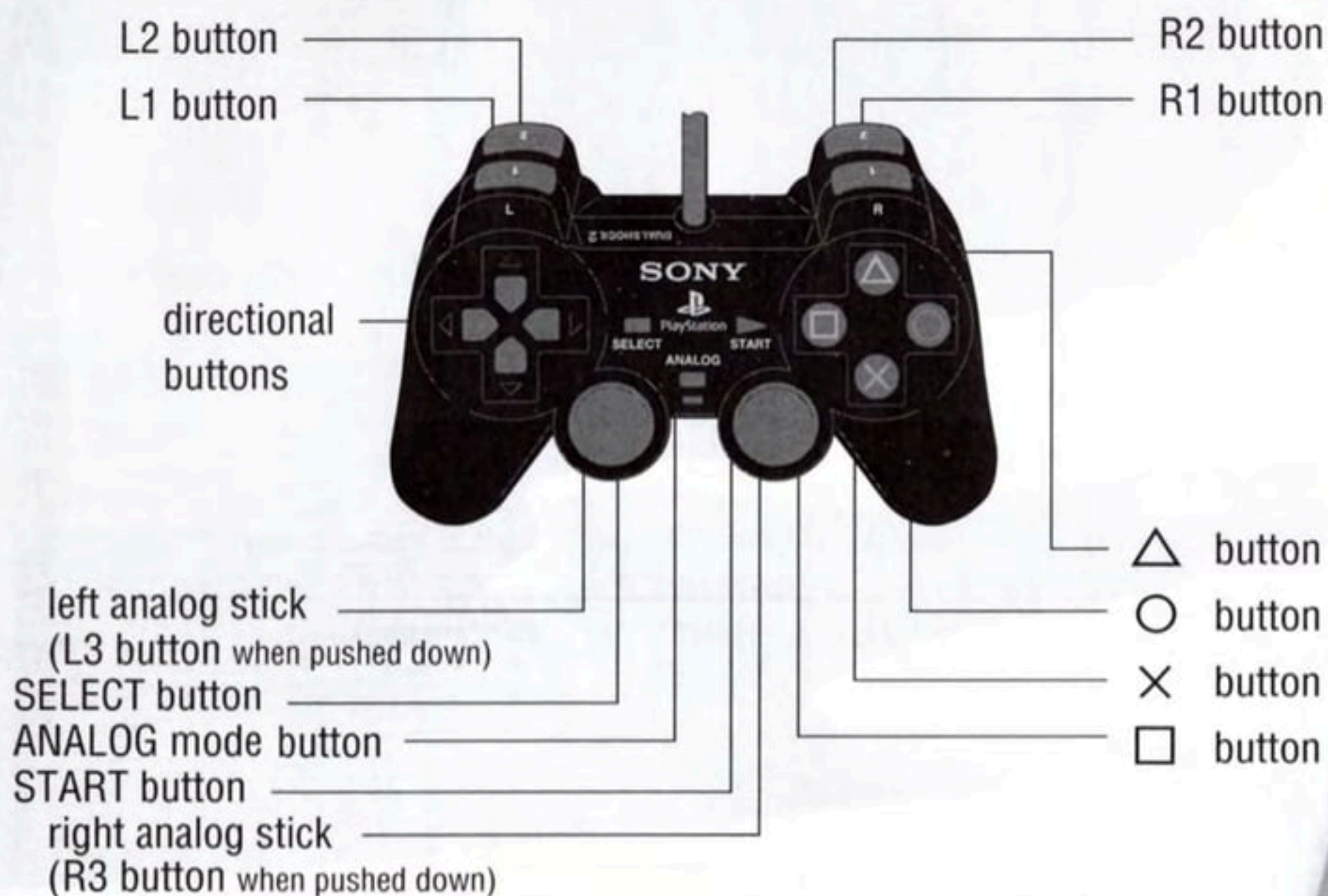
Set up your PlayStation®2 computer entertainment system according to the instructions supplied with your system. Check that the system is turned on (the on/standby indicator is green). Press the OPEN button to open the disc cover.

Place the "Happy Feet™" disc with the label side facing up in the disc holder, and then close the disc cover. Attach game controllers and other peripherals as appropriate. Follow the on-screen instructions and refer to this manual for information on using the software.

## MEMORY CARD (8MB)(FOR PLAYSTATION®2)

To save game settings and progress, insert a memory card (8MB)(for PlayStation®2) into MEMORY CARD slot 1 of your PlayStation®2 system. You can load saved game data from the same memory card or any memory card (8MB)(for PlayStation®2) containing previously saved games.

## DUALSHOCK®2 ANALOG CONTROLLER CONFIGURATIONS



Happy Feet does NOT recommend or support "Analog Joystick" controllers that are not DUALSHOCK®2 analog controllers.

### Autosave

Happy Feet uses an Autosave feature. When saving to memory card (8MB)(for PlayStation®2), an "autosaving" icon will appear on screen. Do not remove the memory card or turn off your PlayStation®2 computer entertainment system while saving.



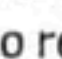
As you progress in the game, the autosave feature automatically saves to your memory card at the completion of each mission.

**Note:** Happy Feet's Save feature does not save your option settings.

### Menu/Sub-Menu Navigation

Throughout this manual, ↑, ↓, ← and → will signify pressing Up, Down, Left and Right on the directional buttons. To navigate through the game menus (i.e. Options), use the directional buttons (↑, ↓, ← and → depending on the menu) to highlight a selection.

### Quitting a Game in Progress

During the game, press the  button to display the Pause Menu. Press the directional buttons ↓ to highlight **Quit**, then press the  button. To confirm exiting the game, highlight **Yes**, then press the  button again to return to the Main Menu.

**Note:** You cannot quit a game during a cut-scene.

# Story

Based on Warner Bros. Pictures' comedy adventure HAPPY FEET, put yourself in the "tap shoes" of Mumble, a young penguin born into a nation of Emperor Penguins— where each needs a Heartsong to attract a soul mate. Unfortunately, Mumble is the worst singer in the world... however, as it happens, he is a brilliant tap dancer!

Experience life as Mumble! Step into his happy feet - from his tap dancing birth, his harrowing escape from a hungry Leopard seal, his fiesta-filled friendship with the Adelie Amigos and finally to his climactic encounter with humankind.



**Toddler Mumble**

**Mumble**

**Gloria**

**Toddler Gloria**



**Adelie Amigos**

## Dancing

Follow on-screen icons using directional buttons ↑, ↓, ← or →

You can also press the △, ×, □ or ○ buttons

## Belly-Sledding

Steering.....left analog stick ↓ or directional buttons ← or →

Slow Mumble Down.....Hold left analog stick or directional buttons ↓

Jump.....× button

Perform Trick.....× button while in the air

## Swimming

left analog stick or directional buttons ↑, ↓, ← or →

Spin .....× button

## Map Screen

Next (following completed level) .....directional button →

Previous.....directional button ←

## Skip introduction/conclusion

Press the × button.

## Dance Pads

Happy Feet does support video game Dance Pads. If you choose to use a Dance Pad, it must be connected to controller port 2 in Single Player mode. In Family mode, you can insert the Dance Pad in controller ports 1 or 2.

# Main Menu

## New Game

### STORY MODE

Play as Mumble and experience the Happy Feet game in Story Mode through Dancing, Swimming and Belly-Sledding missions (see **Story Mode**, pgs. 7-9).



### Load Game

When you select this option, any saved games will be displayed up to three Save slots. Select a saved game to load to continue the game.

### Family Mode

This is Happy Feet's multiplayer game mode. Two players can play a variety of Dancing, Belly-Sledding or Swimming missions (see **Family Mode**, pg. 10).

### Options

#### LANGUAGE

Highlight **English** or **French**, then press the **X** button to confirm your choice.

#### SETTINGS

Highlight an option, then press the directional buttons left or right to adjust music or **Sound FX** volume. You can also turn ON or OFF your controllers **Vibration** and **Autosave**.

### Extras

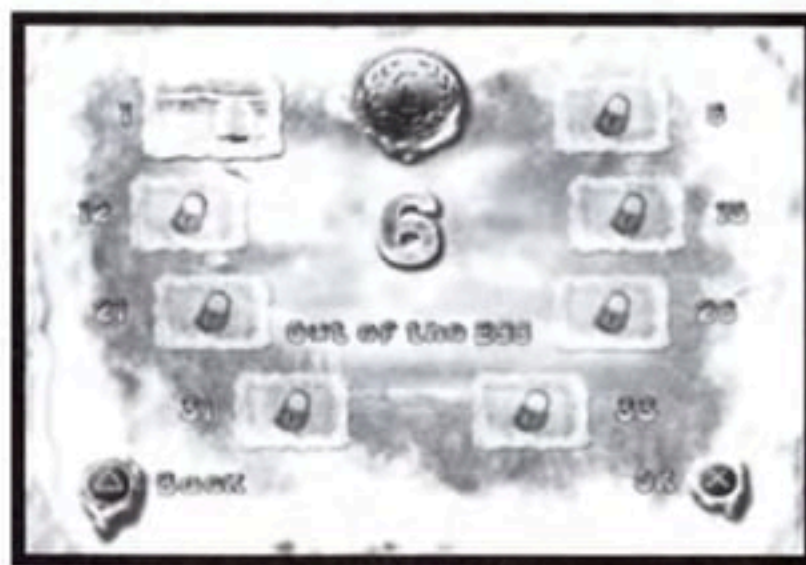
#### CREDITS

View the names of those who worked to bring you the Happy Feet game.

#### UNLOCKABLES

As you play Happy Feet in single-player mode, you'll earn Gold Medals. Gold Medals can be used to purchase unlockable content. As you collect Gold Medals, the amount will be saved to your memory card. When you go to the Unlockables screen, the number of medals earned will be displayed.

The Unlockables screen displays eight Unlockables, along with the number of Gold Medals you'll need to view them. Highlight the Unlockable you want to view, then press the **X** button.



#### NOTES

- Although you're awarded Silver and Bronze Medals, only Gold Medals can be used to unlock items.
- The amount of Gold Medals saved on the memory card is only loaded when you boot up.

# Story Mode

This is the single-player game. To start a game, select one of the three available Save slots. Prior to dancing, you'll have the option to choose from **Easy**, **Medium** or **Hard** difficulty settings. If you're playing a game for the first time, a short tutorial will help you learn how to play. You'll need to complete the first Dance level (Out of the Egg) before you can move on to the other types of games.



## Story Mode Map



In Story Mode, the Map screen will be displayed each time you finish a Mission. It displays your score and type of medal you've earned. It also displays the name of the Mission, the type of Mission and the scores you'll need to earn each of the three medals. Here are all of the Story Mode game types:

### DANCING

Keep Mumble's feet moving by successfully pressing the directional buttons as displayed on-screen (see **Dancing**, pg. 8).

### COLLECTION

Collect specified objects as you sled down the hill or swim under water. You must collect a certain amount of items in order to succeed.

### RACE

Race other penguins as you sled down a hill.

### FLEE

Flee from predators as you swim under water. Swim fast! If they bite you, you'll lose air.

### CHECKPOINT

Checkpoint Missions require Mumble to reach each checkpoint before his time expires. When he reaches a checkpoint, more time is added to his counter.

To move to the next mission (or the previous mission), press the directional buttons ← or →. Once you've selected a mission, press the ⊗ button. At the Map screen, you can forge ahead to the next mission or replay any of your previously played missions.

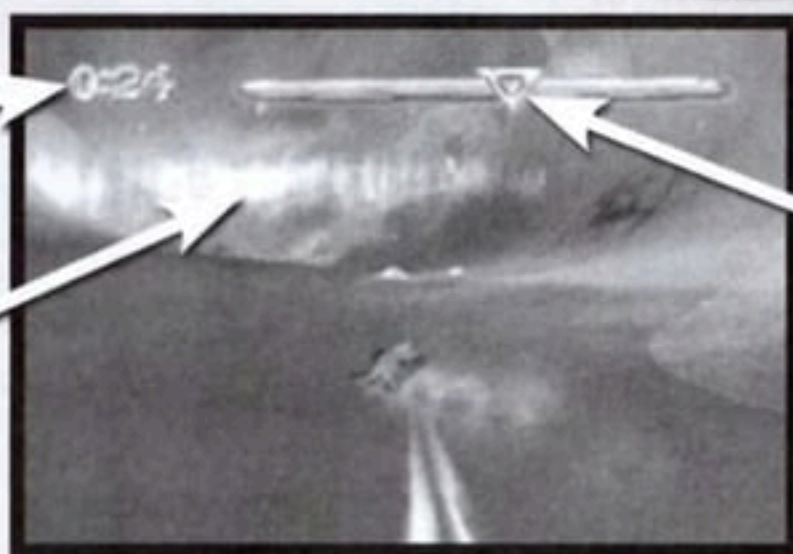
**Note:** If you fail a mission two times, you will be given the option to Skip the mission. If you decide to Skip the mission, you won't receive a medal. But you can play the mission at a later time to get a medal.

# Story Mode

## Belly-Sledding

Timer/  
Collectibles

Checkpoint



Race  
Progress

The HUD display changes based on the type of Belly-Sledding mission you're playing. The Timer will appear for Checkpoint missions, and an item counter will appear for Collection missions. Watch for rocks or rocky surfaces. They'll slow you down if you make contact. Ice surfaces will give you speed. To perform a trick, press the  $\otimes$  button while in the air.

### TIMER/COLLECTIBLES

You must meet each Checkpoint to keep time on the Timer. If you're collecting, the number of collectible objects will be displayed in the upper left portion of the screen. During a race mission, the Timer display total race time.

### RACE PROGRESS

The triangular cursor moves from left (beginning) to right (end) on the bar. The number inside the triangular cursor will show you if you're running in first or second place.

### CHECKPOINT

Cross the Checkpoint to add more time to the Timer.

## Dancing

Grace Meter

Arrows



Note Bar

### GRACE METER

Using the directional buttons, you can make the penguin dance. Press the correct directional buttons as the Arrows enter the like icon on the Note Bar. Good timing will break apart the arrow, signifying that your timing was good. If the arrow turns red, your timing was off.

Press the directional buttons at the right time to keep the yellow dots from disappearing. If all of the dots disappear, the dance ends. If you lose any dots, successfully hitting arrows will refill the meter with one dot.

**Note:** If you run out of dots in Multiplayer mode, you'll have to wait for the Grace Meter to refill before you can continue.

# Story Mode

## Dancing (cont.)

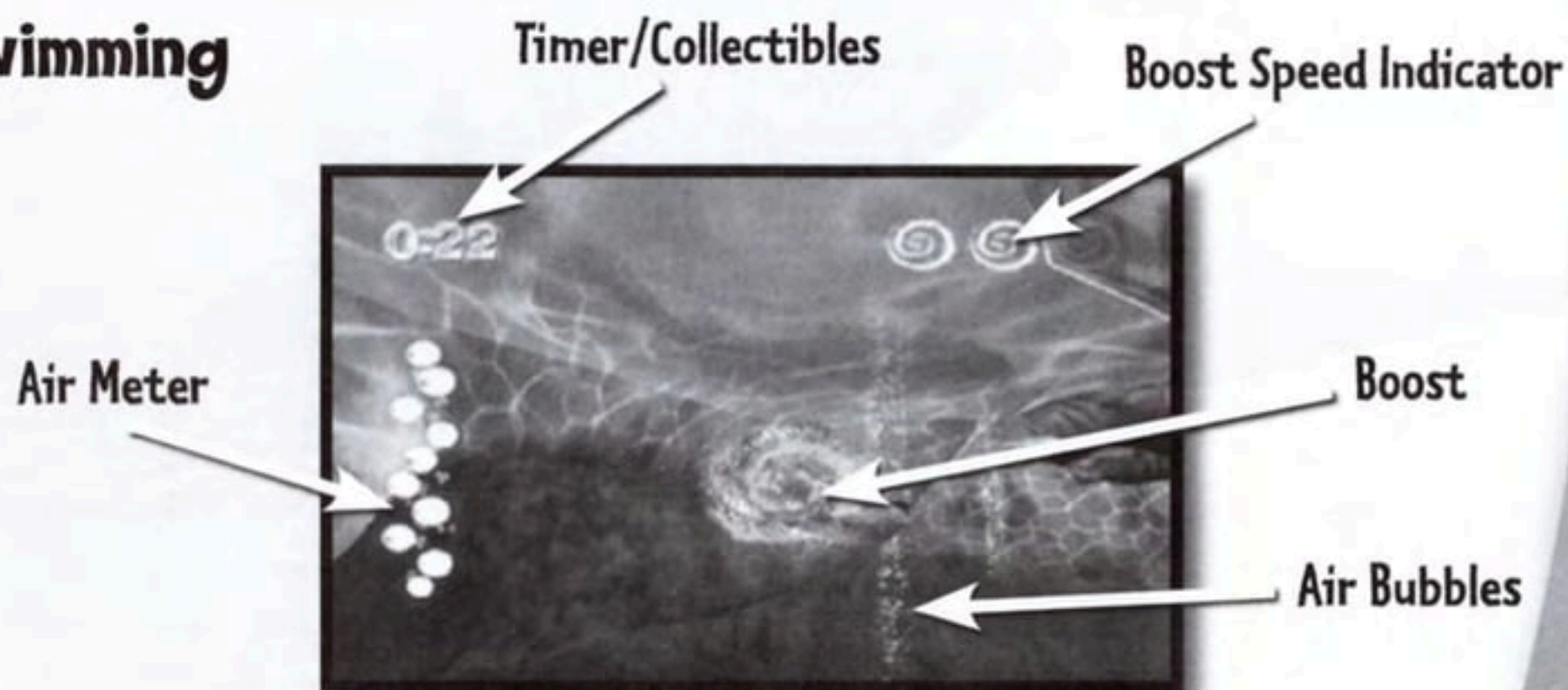
### ARROWS

These directional indicators rise from the bottom of the screen. As they cross the Arrows at the top of the screen, press that same directional button.

### NOTE BAR

As indicators cross these arrows, press the matching directional button. For example, when the arrow is pointing up, press the directional buttons ↑.

## Swimming



There are three types of swim missions: Collection (collect items), Checkpoint (race the clock) and Flee (escape from a predator). The HUD display changes based on the type of Swimming mission you're playing. The Timer will appear for Checkpoint missions, and an item counter will appear for Collection missions. Watch for falling Ice columns or ice pillars. They'll slow you down if you make contact, and you will lose air in your Air Meter.

### BOOST/BOOST SPEED INDICATOR

Swim through Boosts to add speed to your swim. Each time you swim through a Boost, your speed increases. The Boost Indicator illuminates up to three Boosts. If you swim through three Boosts in a row, your speed will be at its maximum. Once you miss a Boost, the Boost Indicator will reset.

### AIR METER

As you swim underwater, your air supply diminishes. Swim through air bubbles to replenish your air.

### AIR BUBBLES

Swim through these air bubbles to replenish and increase your air meter.

### CHECKPOINTS

Checkpoints are gold rings appearing in the water. Swim through the Checkpoint to add more time to the Timer.

### TIMER/COLLECTIBLES

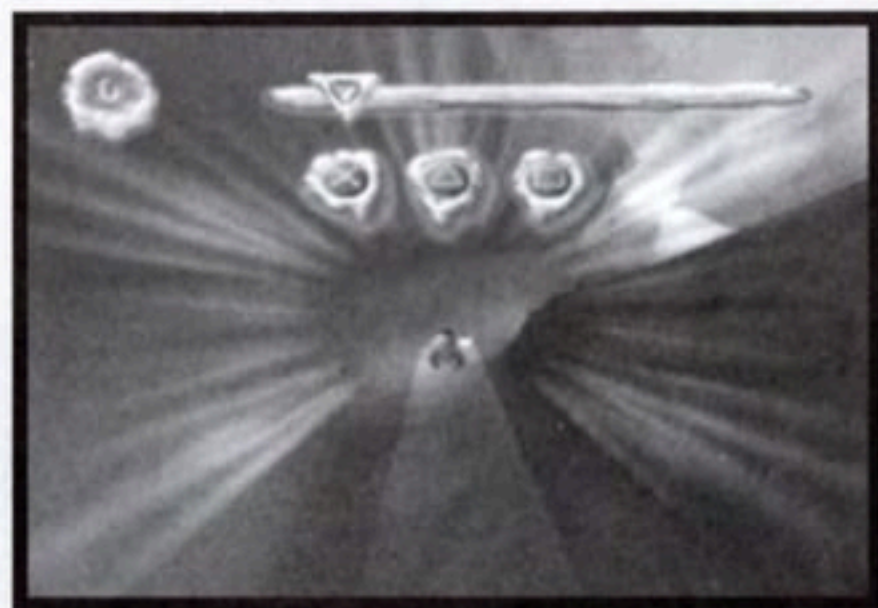
You must meet each Checkpoint to keep time on the Timer. If you're collecting, the number of Collectibles will be displayed in the upper left portion of the screen.

# Family Mode

## BELLY-SLEDDING

Player 1 guides Mumble down the mountain, and Player 2 uses on-screen button instructions to break through obstacles. Buttons must be pressed at the right time to be most effective.

**Note:** You'll receive points if you break a gate and sled through it. You'll get no points if you try to go through an unbroken gate or miss it completely. Only Player 2 can break through ice gates while Player 1 controls Mumble.



## DANCING

Using the directional buttons, each player can make their own penguin dance. Press the correct directional buttons as the Arrows enter the like icon on the Note Bar. Good timing will break apart the arrow, signifying that your timing was good. If the arrow turns red, your timing was off.

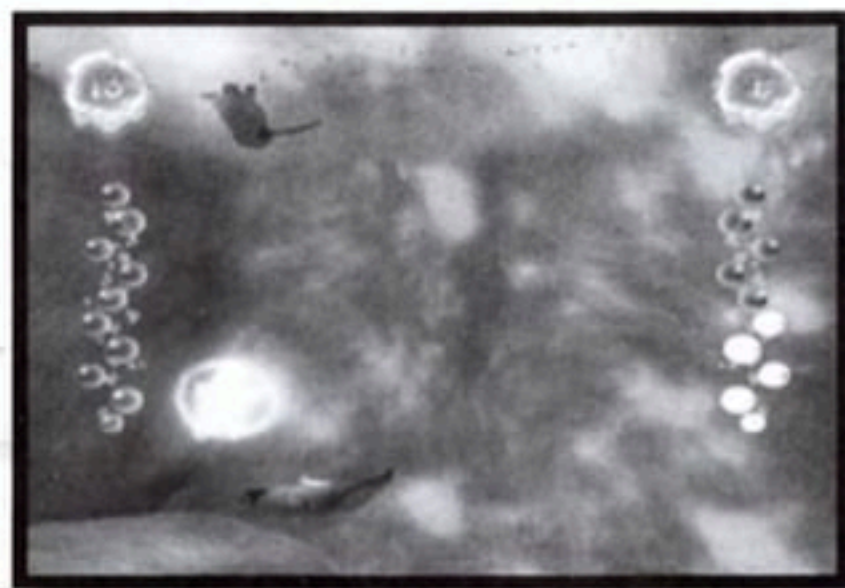
**Note:** If you run out of yellow dots, you'll have to wait for the Grace Meter to refill before you can continue playing (see **Grace Meter**, pg. 11).



## SWIMMING

Both players race underwater, collecting an illuminated item along the way. The player who collects the most items wins. To collect an item, simply make contact with it. Make sure you swim through air bubbles to take in needed air.

**Note:** If you run out of air bubbles, you'll have to wait for the Air Meter to refill before you can continue playing.



# Credits

## Voice Talent

Mumble	Elijah Wood
Gloria	Brittany Murphy
Toddler Mumble, Toddler Gloria	EG Daily
Lovelace	Fred Tatasciore
Ramon	Dan Castellaneta
Nestor	Carlos Alazraqui
Lombardo	Johnny Sanchez III
Rinaldo	Jeff Garcia
Raul	Lombardo Boyar
Norma Jean	Catherine Cavadini
Memphis	Christopher Smith
Miss Viola, Mrs. Astrakhan	Grey Delisle
Noah the Elder	Christopher Smith
Egbert the Elder	Grant Albrecht
Elephant Seal #1	Dan Castellaneta
Elephant Seal #2, Alpha Sku, Maurice	Dee Baker
Other Skuas	Roger Rose, Christopher Smith, Fred Tatasciore
Young Penguins	Catherine Cavadini, Grey Delisle
Adult Penguins	John Adair, Brigitte Burdine, Grey Delisle, Joseph Murray, Adam Nelson & Roger Rose
Elder Penguins	Chris Edgerly, Fred Tatasciore
Zombie Penguin	Ricky Early
Humans	Catherine Cavadini, Chris Edgerly, Johnny Sanchez III
Dancer (Mo-Cap)	Travis Knights
Leopard Seal	Roger Rose

## Developed by Artificial Mind and Movement

### PRODUCTION TEAM

Executive Producer/President	Rémi Racine
Game Executive	Christophe Gomez
Creative Directors	Gary Corriveau & Claude Pelletier
Game Director	Marie-Jo Leroux
Production Manager	Annie-Catherine Valiquette
Lead Designer	Morgan Jaffit
Senior Artistic Director	Éric Warin
Artistic Director	Jonathan Gingras
Lead Programmer	Lesley Phord-Toy
Technical Lead Programmer	Nicolas Trudel
Lead Animators	Velislava Nikolova & Lorne Nudel
Lead Modeling	Jean-Philippe Simard
Lead Texturing/Lighting/VFX	Mathieu Fecteau
Technical Art Directors	Stéphane Dubois & David Lightbown
Sound Technical Director	Jean-Frédéric Vachon
Programming	Véronique Bruneau, Jeffrey Frampton, Andrej Gombar, Alexandre Héту, Simon Rinfret, Michael Trussler & David Vaillancourt
Additional Programming	Olivier Martin
Level Design	Jean-François Boulanger, Jason Kim, Jason Thériault & Louis-David Tremblay
Additional Level Design	Jonathan Cournoyer & Justin Przedwojewski
Illustrations	Marek Olejarz & Sophie Ouellet
Animation	Steven Dickinson, Éric Dubreuil & Marjolaine Philibert-Lajoie
Additional Animation	Louis-Guy Dumais, Caroline Prénoveau, Éric Rouer & Kien Tran
Modeling	Michael Steward & Brian Yee
Texturing and Lighting	Médéric Chassé, Audrey Flamand-Lapointe & James Miguel
Additional Texturing	Mélanie Caron
Visual Effects	Dominic Gadoury
Additional Visual Effects	Vincent Fiset
Sound Design	Philippe Charron
Assistant Sound Design	Ian Chuprun
Production Coordination	Paolo Pace & Frédéric Plante
Arrow Patterns	Michel Donais
Head of Production	Chafye Nemri
CTO	Martin Walker

# Credits

## TECHNOLOGY

Tools Team ..... Thierry Bouchard, Sébastien Lavoie, Alexis Matte, Valérie Méthot & Martin Paradis  
Framework Team..... Bruno Champoux (Lead), François Cayouette, Gabriel Côté & Mathieu Rouleau  
Graphics Team ..... Michel Vachon (Lead) & Sébastien Génovèse  
Audio & Peripherals Team... Daniel Carrier (Lead), Simon Pelsser & David Andrew Reid  
Simulation Team ..... Étienne Danvoye (Lead), Christian Martineau, Liko-Paul Pinsonnault & Pierre-Jules Tremblay

## CTEK

Team Lead – Programming... Patrick Hubert  
Programming ..... Marc-Frederick Blanchet & Michel Carrier  
Configuration Manager..... Nancy Nadeau  
Technical Director ..... Peter Scholer  
Lead Tester ..... Cédric Michea  
Testers ..... André Laniel & Lili Julie Martin  
Gameplay Analyst..... Vincent Noiret  
Mini Feet User Testers .... Lucien Corriveau, Sarah Corriveau, Antoine Cyr, Naomie Gingras, Anne-Elisabeth Houde, Matthew Keenan, Patrick Keenan, Justin Leblanc, Amélie Michéa, Nathan Rullier, Oriane Rullier, Roxane Tétrault & Alexandre Warin

## ARTIFICIAL MIND AND MOVEMENT WOULD LIKE TO THANK:

Marjolaine Allie, Alexei Anikine, Mike Baugh, Alexandre Bélanger, Alexandre Beloin, Jérémie Chicoine, Martin Cright, Chloé Desautels, Marc Devault, Myrienne Dontigny, Richard Dumont, Wendy Enriquez-Donissaint, Fernando Falcao, Éric Fontaine, Lyne Girouard, Angel Hashemi, Stephanie Houde, Pierre Hubson, Shelley Johnson, Shane Keller, Thierry Labelle, Xavier Lestourmeaud, Lysanne Martin, Jean-Martin Masse, Mark Mitchell, Pierre Poulin, Maria Radice, Benoît Rullier, Martin Saindon, David Sasson, Shawn Segal, Brennan Schoeler, Martin Thibert, Paul Williams, Friends & Families...

## Midway Home Entertainment

Executive Producer ..... Richard Hicks  
Sr. Producer ..... Paul Grace  
Producer ..... Hans Lo  
Associate Producer ..... Devin Shatsky  
Assistant Producer ..... Regan Kerwin  
Sr. Technical Director ..... Mark Allen  
Technical Assistant ..... Colin Payette  
Development Director ..... Trevor Snowden  
Associate Development Director ..... Kate Johnson-Page  
Art Director..... Murphy Michaels  
Animation Director ..... Jimmy Almeida  
Audio Director ..... Alex Brandon  
Audio Engineer ..... Drew Rydberg  
Script Writer ..... Tony Peterson  
QA Manager..... Malcolm Scott  
QA Supervisor ..... Curtis Barnes  
QA Lead. .... John Bozeman, Steven Scott & Josh Stacy  
QA Assistant Leads ..... Greg Bass & Travis Zander  
QA Analysts ..... Ben Esguerra, Mark A. Fontecha, JB Sarao, Dan Ryan & Bryan Shaw  
Technical Standards Engineer..... Shana T. Bryant  
Technical Standards Analysts ..... Kevin Bell, Rommel Abalos, Ina Yamaguchi, Josh Palmer & Ray Mitchell  
Director of Marketing..... Tim Granich  
Sr. Public Relations Manager..... Johner Riehl  
Channel Marketing Director..... Greg Mucha  
Channel Marketing Manager ..... Jill Kogut

## MOTION CAPTURE STUDIOS

Animation Director ..... Jim Gentile  
Operator/Animator..... Fredy Palma  
Tech Animation ..... Brian Wright  
Animation ..... Jeff Baker, Darrel Christian, Mike Peterson & Randy Stratton

## FIRST PARTY RELATIONS

Director..... Samuel Peterson  
Submissions Coordinator ..... Ki Wolf-Smith  
Assistant Producer..... Johanna Añonuevo  
Assistant Producer ..... Greg Ranz

# Credits

## LICENSING

VP, Licensing ..... Mark T. Morrison  
Licensing Manager ..... Nicole Garcia  
Licensing Coordinator ..... Chari Ong

## LOCALIZATION

Localization Manager ..... Clermont Matton  
Localization Supervisors ..... Baki Allen & Eric Pochat  
Localization Analysts ..... Leo Capezzuto, Steve Farmer, Franklin Najarro & Philip Vodermayr

## CREATIVE SERVICES

Ryan Braman, Michael Crawford, Rigoberto Cortes, Stefano Dalu, Gary Gonzales, Rare Macapayag, Jon Mongelluzzo, Sally Nichols, Jack O'Neill, Bill O'Neil, Matt Schiel, Chris Skrundz, BethAnn Smukowski, Dimitrios Tianis, James Vogel, Ron White, Yvonne White-Baptista, Christa Woss & Larry Wotman

## BASED ON AN ORIGINAL DESIGN BY BUZZ MONKEY SOFTWARE

Designers ..... Vince Castillo & Marshall Gause

## VO DIRECTOR & CASTING

BB Casting & Production Services, Inc .. Brigitte Burdine  
Assistant to Ms Burdine ..... Keith Clark

## VO STUDIOS

Media City Sound, BB Casting & Production Services, Inc & Soundelux DMG

VO Sound Engineer ..... Michael Keeley & Ricky Early

Special Thanks ..... Cody Alexander, Derek Douglas, Peter Young,  
Matt Johnson & Wendy Kirk

## Midway Games Ltd.

Managing Director ..... Martin Spiess  
European Sales Director ..... Rob Gross  
Senior European Brand Manager ..... Mike Eglington  
European Brand Manager ..... Aidan Minter  
European Brand Manager ..... Matthew Huband  
Assistant Brand Manager ..... Craig Parker-Wood  
Public Relations Manager ..... Phil Robinson  
European Public Relations Manager ..... Clare Turner  
Software Product Coordinator ..... Joanna Hammond  
Creative Services Assistant ..... Andrew McGregor  
Project Manager ..... Chris Giggins  
Special Thanks ..... David Zucker, Matt Booty, Michael Gottlieb, Steve Allison,  
Mona Hamilton, Rob Gustafson, Lee Jacobson, Bill Tiller,  
Reilly Brennan, Sarah Moschea, Sarah McIlroy, Steve Arthur  
& Paul Sterngold

## Warner Bros. Interactive Entertainment

Senior Producer ..... Heidi Behrendt  
Associate Producers ..... Doug Rukavina & Kirsten Gavoni  
Manager, Rights & Clearances ..... Karen Pierson  
Director, Production ..... Jonathan Eubanks  
Marketing Coordinator ..... David S. Cohen  
Director of Marketing ..... Stephanie Johnson  
Public Relations Director ..... Remi Sklar  
Senior Vice President, Operations ..... Debra Baker  
Senior Vice President ..... Jason Hall

## Special Thanks

Kelly Abbey, Angela Angove, Bruce Berman, Nick Bonomo, Austin Boulware, Wendy Bozzi, Graham Burke, Dan Butler, Chris DeFaria, Grant Duncan, Glenn Eckerle, Philippe Erwin, Albert Fernandez, Patrick Flaherty, Dan Furie, Ray Gillon, Dana Goldberg, Andrew Hoffacker, Sean Jackson, Scott Johnson, Ed Jones, Jeneba Konare, Louise McTighe, Alex Michael, Bill Miller, George Miller, Doug Mitchell, Kristin Moffett, Jeff Nachbaur, Zareh Nalbandian, John Powell, Lori Rault, Kellee Santiago, Mark Sexton, Gary Sheinwald, Marc Solomon, Steve Southgate, Lisa St. Amand, Michael Steffen, Michael Steuerwald, Jennifer Stump, Julie Sessing-Turner, Courtenay Valenti, Geraldine Wong, Martin Wood & Keith Zajic

# Credits

## Bug Tracker

CEO- President. . . . . Antoine Carre  
COO . . . . . Paquito Hernandez  
Project Manager . . . . . Peter Cooke  
Lead Testers . . . . . Andrew Lee & James Huan  
Testers . . . . . Stephan Maltais, David Cruau, Pierre-Hugues Legault Monty, Luc Bergeron, Mathieu Pinsonnault, Henry Chen, Nhi Ngo, Marco Rodi, Maxime Chartrand, Nicolas Pelletier, Vo Dao, Emmanuel Paul Blain, David Rivard, Marc Beauchamp, Jesse Penning, Kain Lacroix, Sebastien Héroux, Erin Martel, Nicolas Germain, Linda Ly, Sylvain Menouillard, Jérôme Vu Than & Pierre Boudreau

## RelQ

Delivery Manager . . . . . S Venugopal  
QA Manager . . . . . Naveen N Belavadi  
QA Lead. . . . . Chintu Raju  
Assistant QA Leads . . . . . Srikanth S K, Karthik S & Prajesh Thoppil  
Test Engineers . . . . . Punith D Raju, Sandeep Patil, Dheeraj Shetty, Karthik R, Sharath N Singh, Giribabu D, Prathibha A, Pavan S V, Anil P S, Srikanth K, M Farhan, Ranjani S, Srikanth S, Anoop Kumar P, Tarun Handa, Raghava Phaneendra, Ranganath K, Dron Kumar A, Abhishek Agarwal, Siraj Ahmed, Thrilok H S, Sourabh Bhatnagar, Raghu G Nair, Vishnu Priya, Karthikeyan S & Leeladhar S B

## Music

### “Boogie Wonderland”

Performed by Brittany Murphy  
Written by Allee Willis and Jonathan Lind  
EMI Blackwood Music Inc o/b/o itself, Irving Music and Big Mystique Music (ASCAP).  
Copyright 1979 by Big Mystique Music, EMI Blackwood and Irving Music Inc.  
Produced by John Powell  
Mixed by Bob Clearmountain  
©2006 Warner Bros. Entertainment  
Used by Permission.  
International Copyright Secured.  
All rights reserved.

### “I Will Survive”

Performed by Gloria Gaynor  
Written By Frederick J. Perren, Dino Fekaris  
©1978 Universal Records, a Division of UMG Recordings, Inc.  
Courtesy of Universal Records under license from Universal Music Enterprises  
©Universal - Polygram Int. Publ., Inc. On Behalf Of Itself And Perren-Vibes Music, Inc.(ASCAP)  
International Rights Secured. Not for Broadcast transmission. All rights reserved. DO NOT DUPLICATE.

### “I Wish”

Written and Performed by Stevie Wonder  
©1976 Motown Records, a Division of UMG Recordings, Inc.  
Courtesy of Motown Records under license from Universal Music Enterprises  
Used by Permission of Jobete Music, Co., Inc. and Black Bull Music  
All rights reserved.

### “Jump N Move”

Performed by The Brand New Heavies featuring Jamalski  
Written by Simon Bartholomew, Jan Kincaid, Andrew Levy and Jamal Mitchell  
Published by Warner-Tamerlane Publishing Co. (BMI), Roughneck Reality Music (BMI), Mud Slide Music (BMI)  
© 1992 London Music Ltd. (PRS) & Unknown Publisher (NS)  
Courtesy of Delicious Vinyl Records  
All Rights on Behalf of London Music Ltd. (PRS) administered by Warner-Tamerlane Publishing Corp. (BMI)  
All Rights Reserved. Used by Permission.

# Credits

## **"Somebody to Love"**

Performed by Brittany Murphy  
Written by Freddie Mercury  
Published by Beechwood Music Corp.  
Produced by John Powell  
Mixed by Bob Clearmountain  
©2006 Warner Bros. Entertainment

## **"(Shake, Shake, Shake) Shake Your Booty"**

Performed by KC & The Sunshine Band  
Written by Harry Wayne Casey and Richard Raymond Finch  
By arrangement with Warner Music Group Video Game Licensing  
©1976 T.K. Records, A Label of Rhino Music Company  
Courtesy of T.K. Records, A Label of Rhino Entertainment Company  
Used by Permission of EMI Virgin Songs, Inc. d/b/a EMI Longitude Music  
All rights reserved.

## **"Groove Is In The Heart"**

Performed by Dee-Lite  
Written by D'mitry Brill, Dong-Hwa Chung, Kier Kirby, Kamaal Fareed, Towa Tei and Herbie Hancock  
Published by Delovely Publishing (ASCAP)  
Courtesy of Elektra Entertainment Group  
By arrangement with Warner Music Group Video Game Licensing  
©1990 Elektra Entertainment Group  
Used by permission of EMI Hastings Catalog Inc.  
All rights reserved.

## **"That's The Way (I Like It)"**

Performed by KC & The Sunshine Band  
Written by Harry Wayne Casey and Richard Finch  
Courtesy of T.K. Records, A Label of Rhino Entertainment Company  
By arrangement with Warner Music Group Video Game Licensing  
© 1975 T.K. Records, A Label of Rhino Entertainment Company  
Used by Permission of EMI Virgin Songs, Inc. d/b/a EMI Longitude Music  
All rights reserved.

## **John Powell Score**

"LEOPARD SEAL ATTACK"

"HATCH SCHOOL"

"AVALANCHE"

"GLORIA JOINS"

"MEET SKUA"

"ADELIE LAND"

Written by John Powell  
Published by Warner-Olive Music, LLC (ASCAP).  
© 2006 Warner Bros. Entertainment Inc.  
© 2006 Warner-Olive Music LLC (ASCAP)  
All Rights Adminstered by WB Music Corp.  
All Rights Reserved. Used by Permission.



Includes 8 retro-racing classics!

# MIDWAY ARCADE TREASURES™ 3



Featuring Hydro Thunder,  
San Francisco Rush 2049  
[www.midwayarcade.com](http://www.midwayarcade.com)



PlayStation®2

**MIDWAY**

EVERYONE  
E  
CONTENT RATED BY  
ESRB

Cartoon Violence

Compilation © 2005 Midway Home Entertainment Inc. S.T.U.N. Runner © 1989 Midway Games West, Inc. Badlands © 1989 Midway Games West Inc. Race Drivin' © 1990 Midway Games West Inc. Off Road Thunder © 1999 Midway Home Entertainment Inc. Super Off Road © 1989 Midway Home Entertainment Inc. San Francisco Rush: The Rock Alcatraz Edition © 1997 Midway Games West Inc. Hydro Thunder® © 1999 Midway Home Entertainment Inc. San Francisco Rush 2049™ © 1999 Midway Games West Inc. All rights reserved. HYDRO THUNDER is a registered trademark of Midway Home Entertainment Inc. OFF ROAD THUNDER and SUPER OFF ROAD are trademarks of Midway Home Entertainment Inc. S.T.U.N. Runner, BADLANDS, RACE DRIVN', and SAN FRANCISCO RUSH are trademarks of Midway Games West Inc. MIDWAY and the Midway logos are registered trademarks of Midway Amusement Games, LLC. Used by permission. Compilation distributed under license by Midway Home Entertainment Inc. "PlayStation" and the "PS" Family logo are registered trademarks of Sony Computer Entertainment Inc.

# Warranty

MIDWAY HOME ENTERTAINMENT INC. warrants to the original purchaser of this Midway Home Entertainment Inc. software product that the medium on which this computer program is recorded is free from defects in materials and workmanship for a period of ninety (90) days from the date of purchase. This Midway Home Entertainment Inc. software program is sold "as is," without express or implied warranty damages of any kind, and Midway Home Entertainment Inc. is not liable for any losses or damages of any kind resulting from the use of this program. Midway Home Entertainment Inc. agrees for a period of ninety (90) days to either repair or replace, at its option, free of charge, any Midway Home Entertainment Inc. software product, mailed postage paid, with proof of purchase, to its Factory Service Center.

This warranty is not applicable to normal wear and tear. This warranty shall not be applicable and shall be void if the defect in the Midway Home Entertainment Inc. software product has arisen through abuse, unreasonable use, mistreatment or neglect. THIS WARRANTY IS IN LIEU OF ALL OTHER WARRANTIES AND NO OTHER REPRESENTATIONS OR CLAIMS OF ANY NATURE SHALL BE BINDING ON OR OBLIGATE Midway Home Entertainment Inc. ANY IMPLIED WARRANTIES APPLICABLE TO THIS SOFTWARE PRODUCT, INCLUDING WARRANTIES OF MERCHANTABILITY AND FITNESS FOR A PARTICULAR PURPOSE, ARE LIMITED TO THE NINETY (90) DAY PERIOD DESCRIBED ABOVE. IN NO EVENT WILL MIDWAY HOME ENTERTAINMENT INC. BE LIABLE FOR ANY SPECIAL, INCIDENTAL, OR CONSEQUENTIAL DAMAGES RESULTING FROM POSSESSION, USE OR MALFUNCTION OF THIS Midway Home Entertainment Inc. SOFTWARE PRODUCT.

Some states do not allow limitations as to how long an implied warranty lasts and/or exclusions or limitations of incidental or consequential damages so the above limitations and/or exclusions of liability may not apply to you. This warranty gives you specific rights, and you may also have other rights which vary from state to state.

Midway Home Entertainment Inc.  
Attn: Tech/Customer Support  
6755 Mira Mesa Blvd., Suite 123-155  
San Diego, Ca 92121

Toll Free: 1-866-588-GAME  
9am - 6pm / Pacific Time  
Direct: 858-450-8190  
Fax: 858-658-9027  
Technical & Customer Support at  
<http://support.midway.com>

HAPPY FEET software © 2006 Midway Home Entertainment Inc. MIDWAY and the MIDWAY LOGO are trademarks or registered trademarks of Midway Amusement Games, LLC. All rights reserved. Havok.com™, © Copyright 1999-2005 Havok.com Inc. or its licensors. All Rights Reserved. See [www.havok.com](http://www.havok.com) for details. Uses Bink Video. Copyright (C) 1997-2005 by RAD Game Tools, Inc. Developed by Artificial Mind and Movement, Inc. Midway Home Entertainment Inc. and its affiliates do not monitor, endorse or accept responsibility for the content of any non-Midway website. Distributed under license by Midway Home Entertainment Inc.

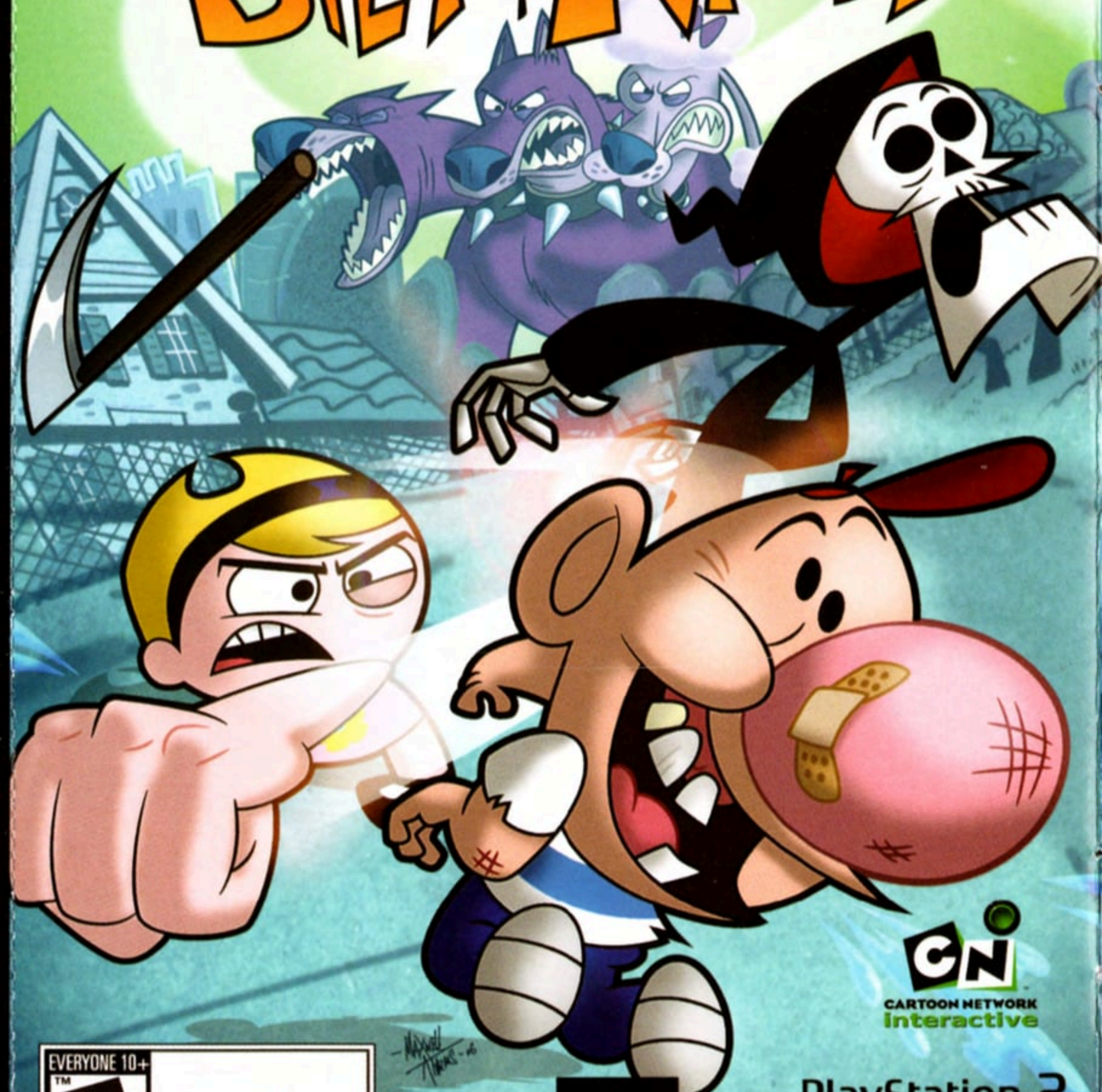


HAPPY FEET and all related characters and elements are trademarks of and © Warner Bros. Entertainment Inc.

WBIE LOGO: ™ & © Warner Bros. Entertainment Inc.

(s06)

# The Grim Adventures of Billy & Mandy™



PlayStation.2



EVERYONE 10+  
TM  
**E**  
10+  
CONTENT RATED BY  
ESRB

Cartoon Violence  
Crude Humor



Software © 2006 Midway Home Entertainment Inc. MIDWAY and the MIDWAY LOGO are trademarks or registered trademarks of Midway Amusement Games, LLC. All rights reserved. Distributed under license by Midway Home Entertainment Inc. "PlayStation" and the "PS" Family logo are registered trademarks of Sony Computer Entertainment Inc.  
The Grim Adventures of Billy & Mandy, The Cartoon Network Logo, and all related characters and elements are trademarks of and © Cartoon Network. (s06)